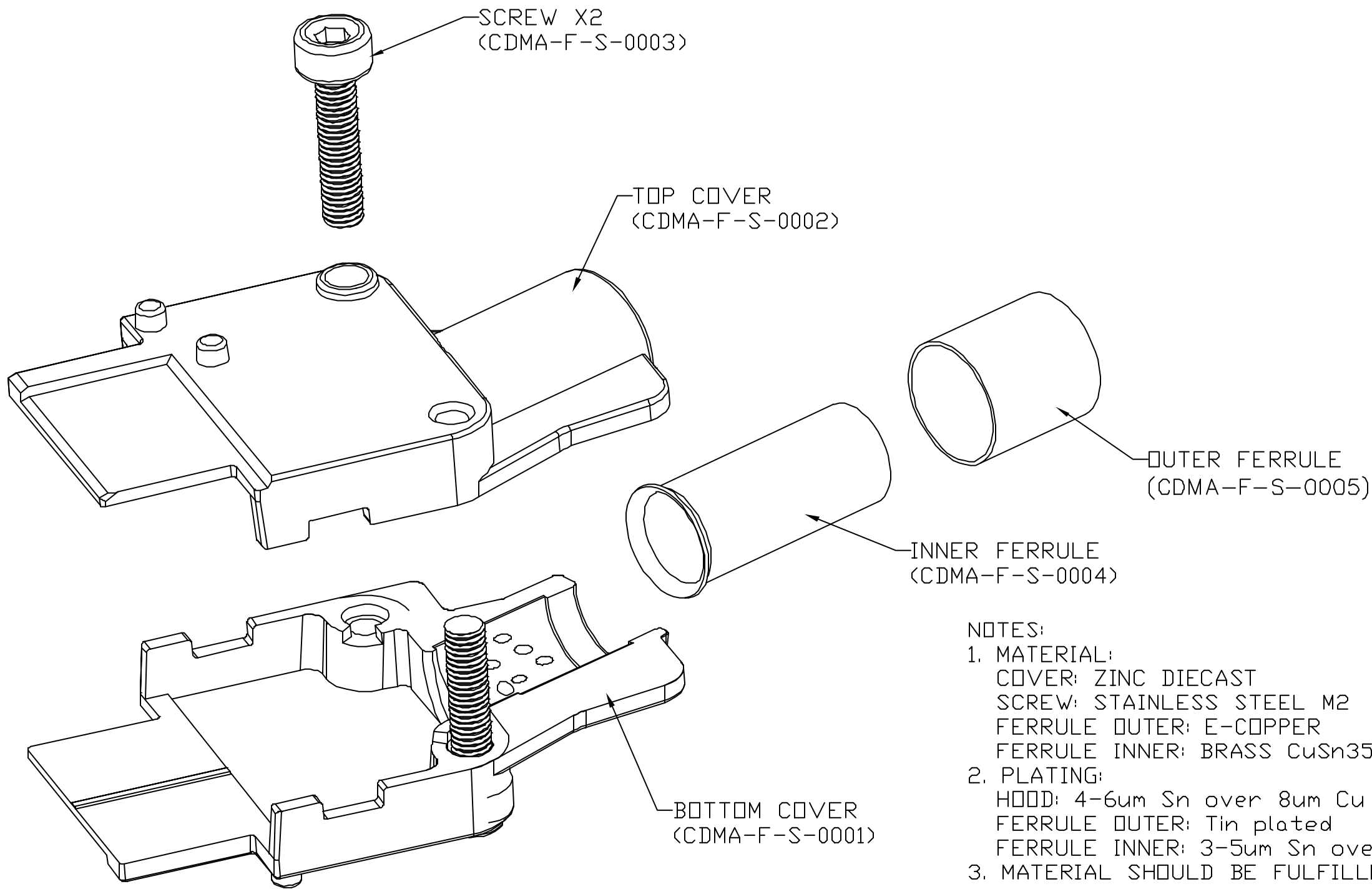


This document is the property of Amphenol Corporation and is delivered on the express condition that it is not to be disclosed, reproduced or used, in whole or in part, for manufacture or sale by anyone other than Amphenol Corporation without its prior consent, & that no right is granted to disclose or to use any information in this document.

REVISIONS				
SYM	ECN	DESCRIPTION	DATE	APPROVED
A	HK2459	INITIAL RELEASE	1/22/03	IP



- NOTES:
- MATERIAL:
 COVER: ZINC DIECAST
 SCREW: STAINLESS STEEL M2
 FERRULE OUTER: E-COPPER
 FERRULE INNER: BRASS CuSn35
 - PLATING:
 HOOD: 4-6um Sn over 8um Cu
 FERRULE OUTER: Tin plated
 FERRULE INNER: 3-5um Sn over 1-2.5um Ni
 - MATERIAL SHOULD BE FULFILLED AMPHENOL SPEC# SSN001.

ITEM NO	PART OR IDENTIFICATION NO	NOMENCLATURE OR DESCRIPTION	QTY REQ'D
PARTS LIST			
UNLESS OTHERWISE SPECIFIED TOLERANCES		APPROVAL	DATE
U.S. METRIC		DRAWN YH.HOU	1/22/03
X +/- 0.10		CHECKED YH.HOU	1/22/03
.XX +/- 0.05		CHECKED	
.XXX +/- 0.02		DRAWING FILE :	
FRACTIONS +/-		\DRAWING\CDMA\F50000.DWG	
ANGLES +/- 1°		TITLE	
FOR MATERIALS AND FINISHES SEE NOTES		METAL SHELL KIT, WCDMA FEMALE	
REMOVE SHARP EDGES		SIZE	
DIMENSIONS		DRAWING NO.	
U.S. INCHES		A3 CDMA-F-S-0000	
(METRIC) (MM)		SCALE	
		NONE	
		SHEET 1 OF 1	