

This document is the property of Amphenol Corporation and is intended to be used for the design of mating connectors. It is not to be reproduced, modified or used in whole or in part, for manufacture of parts or assembly of parts from Amphenol Corporation without the prior consent. If the right is granted to others to use any information in this document.

CUSTOMER DRAWING

REVISIONS				
SYM	ECN	DESCRIPTION	DATE	APPROVED
A	HK2892	INITIAL RELEASE	06/16/03	IP

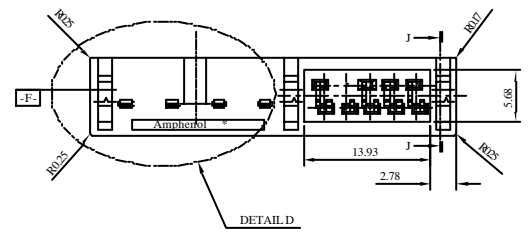
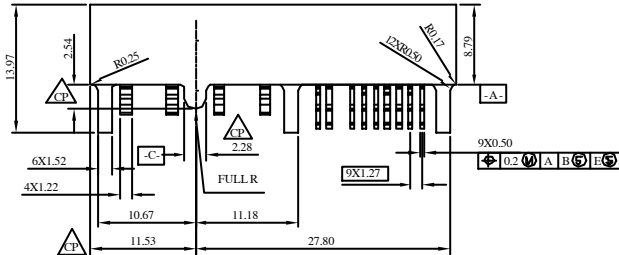
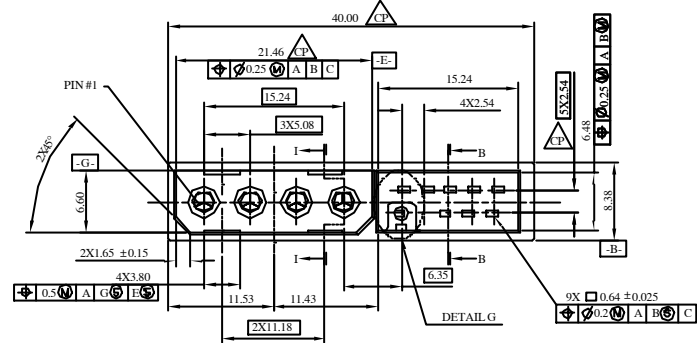
NOTE:
1.HOUSING: 33 % GLASS FILLED PPA, BLACK, UL 94-V0

CONTACTS: PHOSPHOR BRONZE
PLATING: JUMPER PINS: 1.27um NICKEL UNDER PLATING OVERALL
0.12um GOLD FLASH CONTACT MATING AREA
POINT OF MEASUREMENT IS 3.5mm FROM PIN TIP
2.54um TIN/LEAD SOLDER TAIL.
POWER PINS: 1.27~2.54um NICKEL UNDERPLATING OVERALL
2.54~3.81um SN/PB OVERALL

SPECIFICATIONS:
RATED CURRENT: JUMPER PIN 3A
POWER PIN 5A
DIELECTRIC STRENGTH: 1000V FOR 1 MINUTE
INSULATION RESISTANCE: 5 X 10¹³ M Ω
TEMPERATURE: -40 ° TO +105 °
CONTACT RESISTANCE: 20 m Ω MAX
PIN RETENTION FORCE:
JUMPER PINS 1.13KG MIN.
POWER PINS 0.91KG MIN.

REF. PCB DESIGN THICKNESS 1.22 ±0.13

- PIN LOCATION AND TOLERANCE APPLIES TO BOTH THE INTERFACE AND SOLDER TAIL ENDS ON PINS
- COMPONENTS MUST BE CLEANED TO THE BEST COMMERCIAL PRACTICES AVAILABLE WHICH WILL LEAVE NO CONTAMINATION. MATERIAL RESIDUES, OR PROCESS RESIDUES WHICH ARE VISIBLE TO THE UNAIDED EYS. WE ARE CAUTIONED AGAINST USING PROCESS FLUIDS OR MATERIALS CONTAINING SILICONE OIL. CHLORINATED SOLVENTS. OR PHTHALATE PLASTICIZERS
- GATES, FLASH, EJECTOR PIN MARKS, AND VENDOR IDENTIFICATION IS BELOW OR FLUSH TO 0.05 MAX. ABOVE PART SURFACE.
- DRAFT OPTIONAL: IF USED, DRAFT TO BE 3 DEG MAX TO SUBTRACT MASS
- APPLY COPLANARITY TOLERANCE USING THE TWO DATUM -F- SURFACES ON EITHER SIDE OF THE APPLICABLE SOLDER TAIL PATTERN.
- PIN MUST BE STAMPED AND FROMED WITH ALL DIE ROLL EDGES ON THE OUTSIDE SURFACE AND ALL BURR EDGES ON THE INSIDE SURFACE OF THE PIN
- CONNECTOR COMPATIBILITY
THIS CONNECTOR IS INTENDED TO BE MATED WITH POWER CONNECTORS CONFORMING TO THE PARALLEL ATA-5 OR HIGHER
- CONNECTOR MATING AND UNMATING FORCE
POWER SECTION: FORCE TO BE PER PARALLEL ATA-5 SPEC OR HIGHER WHEN USED WITH MATING CONNECTORS TO NOTE 7 OF THIS DRAWING(REF. 1.75KG (3.85LBS) PER CONTACT MAX. MATING FORCE AND 113.5G (0.25LBS) PER CONTACT MIN. UNMATING FORCE NOT INCLUDING HOUSING DETENT LOCKING FEATURES
- PART CLEANLINESS TO BE PER MAXTOR SPEC 10194
- ASSEMBLY SURFACE AREA = 35.0 CM²

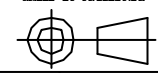


CP CRITICAL PARAMETER. SUPPLIER MUST DEMONSTRATE MINIMUM CPK OF 1.3 WHERE APPLICABLE.

ITEM NO	PART OR IDENTIFICATION NO	QUANTITY	DESCRIPTION	QTY REQD
PARTS LIST				
UNLESS OTHERWISE SPECIFIED TOLERANCES		APPROVAL		DATE
U.S. METRIC		DRAWN YSUNG		05-18-03
X +/- 0.5		CHECKED YJHOU		05-18-03
XX +/- 0.13		CHECKED		
FRACTIONS +/- 0.5		DRAWING FILE :		
ANGLES +/-		DRAWING NO: 0841399, 084139901		
REMOVE SHARP EDGES		ANGLE OF PROJECTION		
DIMENSIONS		SIZE		DWG. NO.
U.S. METRIC		A3		C-864-1399-001
(INCH) (MM)		SCALE		NONE
		SHEET		1 OF 2

Amphenol

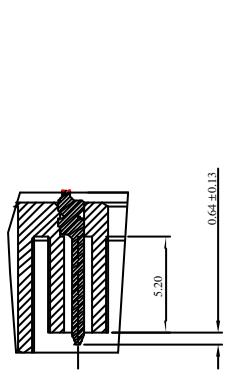
SATA LEGACY 2-IN-1 COMBO CONNECTOR



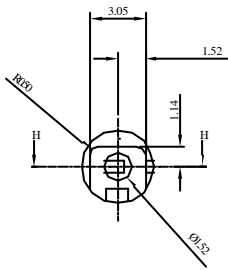
Not to be used for the design of any component unless it is specifically approved by the manufacturer. The manufacturer shall be responsible for the design of any component. The manufacturer shall be responsible for the design of any component. The manufacturer shall be responsible for the design of any component.

REVISIONS				
SYM	ECN	DESCRIPTION	DATE	APPROVED
		REFER TO THE SHEET 1		

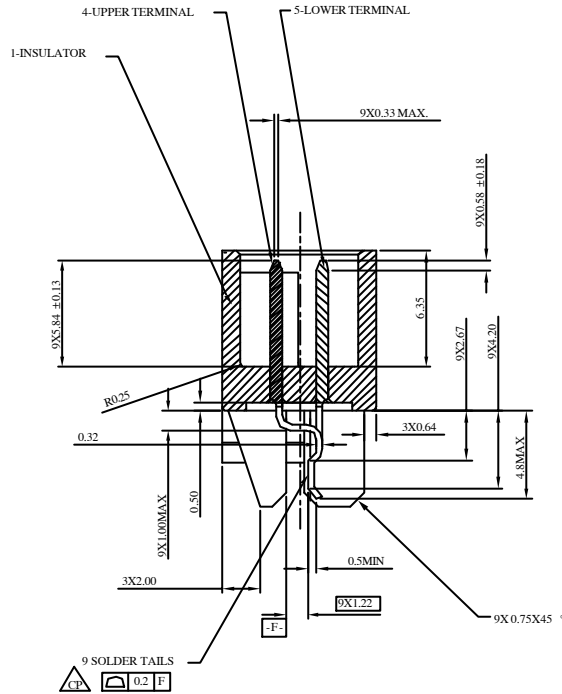
CUSTOMER DRAWING



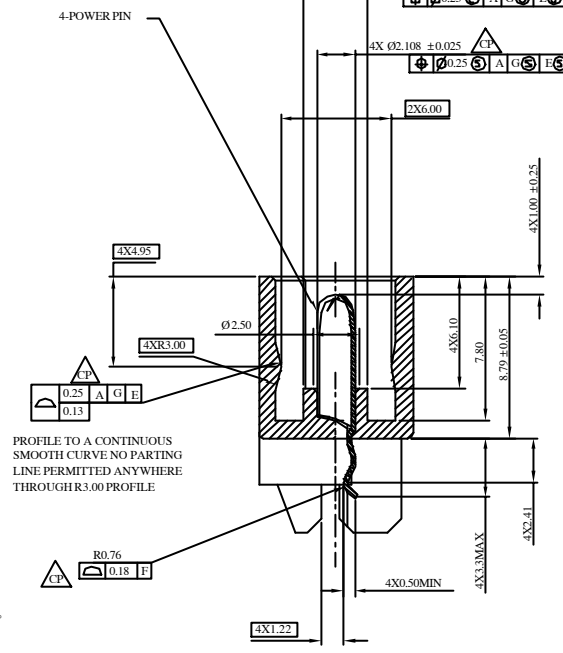
SECTION H-H 4:1



DETAIL B 4:1

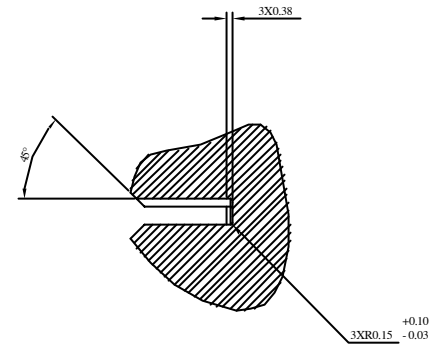


SECTION B-B 4:1

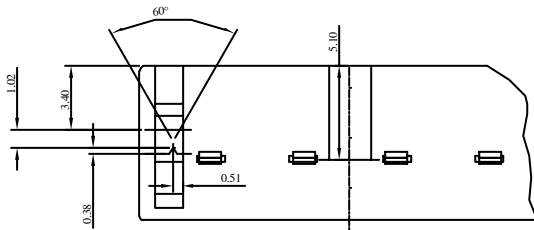


SECTION I-I 4:1

PROFILE TO A CONTINUOUS SMOOTH CURVE NO PARTING LINE PERMITTED ANYWHERE THROUGH R3.00 PROFILE



SECTION J-J 4:1



DETAIL D 4:1

ITEM NO	PART OR IDENTIFICATION NO	NOMENCLATURE OR DESCRIPTION	QTY REQ'D
PARTS LIST			
UNLESS OTHERWISE SPECIFIED TOLERANCES		APPROVAL	DATE
U.S.		DRAWN	YS-DING 05-16-03
METRIC		CHECKED	YI-HOU 05-16-03
X +/-		DRAWING FILE :	
XX +/-		\\COMB\BIB41\BIB\C8641399\001	
FRACTIONS +/-		TITLE	
ANGLES +/-		SATA LEGACY 2-IN-1 COMBO CONNECTOR	
FOR MATERIALS AND FINISHES SEE NOTES		SIZE: DRAWING NO.	
REMOVE SHARP EDGES		A3 C-864-1399-001	
DIMENSIONS		REV. A	
U.S. INCHES		SCALE NONE	
(METRIC) (MM)		SHEET 2 OF 2	