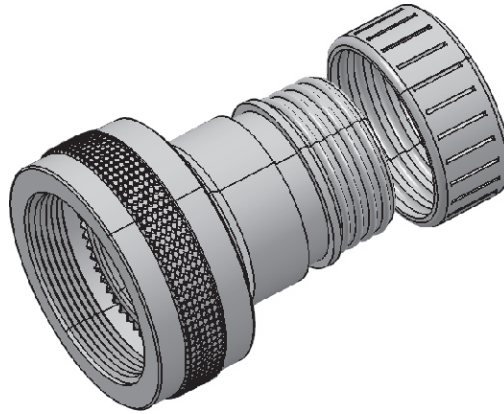


LAMP THREAD ADAPTOR



This adaptor is designed with threads similar to that in the lamp base for shield termination. It is very effective, easy and quick method of shield termination and field maintenance is also effortless. The termination area is designed to accept 'Nut' as well as 'Clamp'. The nut option enables the use of heat shrink boot and the clamp option will facilitate the strain relief clamping without heat shrink boot after the shield/cable termination.

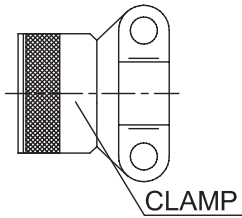
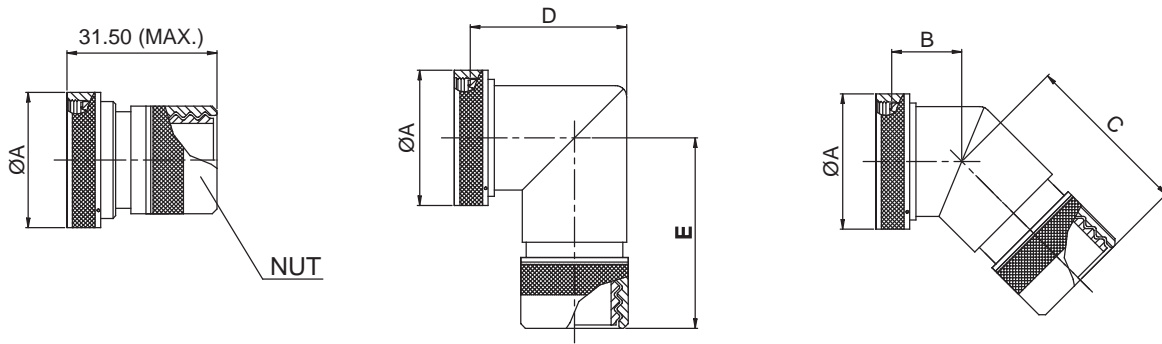
For Connector Group	Page No.
All Groups →	XIII-1 - XIII-2

Note: For Connector group Identification refer Table 1 - A, B, C, D (Page 7-11) and for Material / Plating Finish, Refer Table-2 (Page 12)

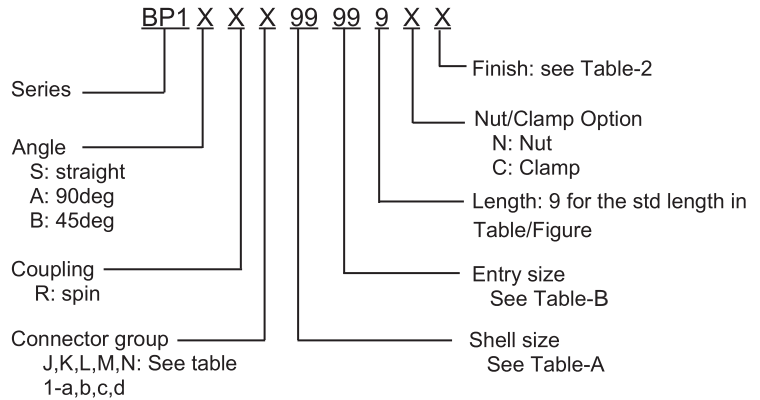


Connector Group - All

Straight, 90°, 45°



Amphenol Part Number



NOTE: * For more cable entry and length options, contact factory

		TABLE-A									
AMPHENOL PART NUMBER DESIGNATOR	CONNECTOR SHELL SIZE	A DIA. (MAX)		B (MAX)		C (MAX)		D (MAX)		E (MAX)	
		INCH	MM	INCH	MM	INCH	MM	INCH	MM	INCH	MM
08	8/9	0.75	19.05	0.75	19.05	0.89	22.61	0.88	22.35	1.00	25.40
10	10/11	0.89	22.61	0.78	19.81	0.92	23.37	0.96	24.38	1.06	26.92
12	7/12/13	1.00	25.40	0.81	20.57	0.94	23.88	1.00	25.40	1.12	28.45
14	12/14/15	1.13	28.70	0.83	21.08	0.96	24.38	1.07	27.18	1.16	29.46
16	19/16/17	1.25	31.75	0.86	21.84	0.98	24.89	1.13	28.70	1.23	31.24
18	27/18/19	1.36	34.54	0.88	22.35	1.00	25.40	1.18	29.97	1.27	32.26
20	37/20/21	1.48	37.59	0.91	23.11	1.02	25.91	1.25	31.75	1.33	33.78
22	22/23	1.60	40.64	0.93	23.62	1.05	26.67	1.31	33.27	1.39	35.31
24	24/25	1.72	43.69	0.94	23.88	1.08	27.43	1.36	34.54	1.45	36.83
28	28	2.00	50.80	1.04	26.42	1.25	31.75	1.48	37.59	1.69	42.93
32	32	2.25	57.15	1.09	27.69	1.30	33.02	1.61	40.89	1.81	45.97
36	36	2.50	63.50	1.14	28.96	1.35	34.29	1.72	43.69	1.92	48.77
40	40	4.13	104.90	4.01	101.85	2.76	70.10	4.13	104.90	2.88	73.15
44	44	4.13	104.90	4.01	101.85	2.88	73.15	4.13	104.90	3.00	76.20
48	48	4.13	104.90	4.01	101.85	3.00	76.20	4.13	104.90	3.12	79.25

TABLE-B		
AMPHENOL PART NUMBER DESIGNATOR	ΦENTRY(INCH) +0.009 -0.018	ΦENTRY(MM) +0.25 -0.50
ENTRY SIZE		
01	0.125	3.18
02	0.250	6.35
03	0.375	9.53
04	0.500	12.70
05	0.625	15.88
06	0.750	19.05
07	0.875	22.23
08	1.000	25.40
09	1.126	28.60
10	1.250	31.75
11	1.378	35.00
12	1.500	38.10
13	1.750	44.45