

1.85mm Series

1.85mm Interface at a Glance

The 1.85mm connector was designed for mode free operation through 65 GHz. The interface uses a mostly air-dielectric with a support bead that is set back in the body of the connector to reduce bead interaction in a mated pair. Like the 2.92mm and 2.4mm connector, the body has been designed to ensure that the outer conductors engage before the center conductors make contact. The 1.85mm interface uses an M7 thread and is compatible only with the 2.4mm interface. SV Microwave supplies adapters to mate 1.85mm connectors to SMA and 2.92mm connectors.

Electrical Specifications

Impedance	50Ω
Frequency	65 GHz
VSWR	1.03 + .005 f
Insertion Loss	.04 √ f
Shielding Effectiveness	≥ 100 dB

Mechanical Specifications

Mating Cycles	500
Mating Torque	5 - 7 in - lbs
Inter-mate ability	2.4mm

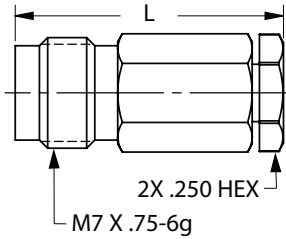
Environmental Specifications

Temperature Rating	-65°C to +165°C
Corrosion (Salt Spray)	MIL-STD-202, Method 101, Condition B
Vibration	MIL-STD-202, Method 204, Condition D, 20 Gs
Shock	MIL-STD-202, Method 213, Condition I, 100 Gs
Thermal Shock	MIL-STD-202, Method 107. Cond. B, -65°C to +125°C
Moisture Resistance	MIL-STD-202, Method 106, Less Step 7B
Barometric Pressure (Altitude)	MIL-STD-202, Method 105, Condition C, 70k Ft.

Note: Specifications, dimensions and images are typical for the series and may vary by part number

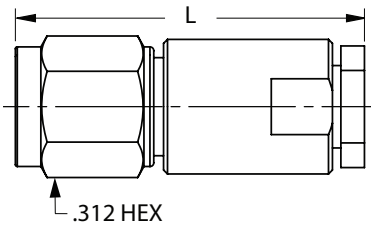
1.85mm Series

Female Cable Connector



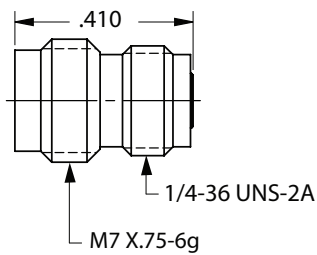
Cable	Part Number	L
0.047	SF3321-60005	.665"
0.085	SF3321-60006	.945"

Male Cable Connector



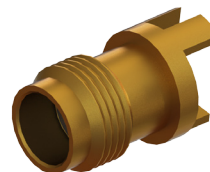
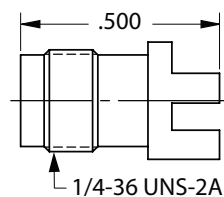
Cable	Part Number	L
0.047	SF3311-60002	.890"
0.085	SF3311-60003	.581"

Female Sparkplug Connector, Accepts Ø.008" Pin



Part Number
SF3375-6001

Female PCB Edge Launch Connector, .062" PCB Thickness

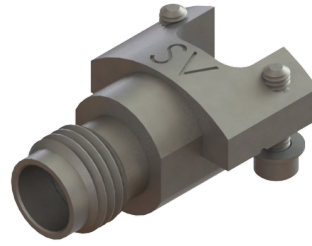
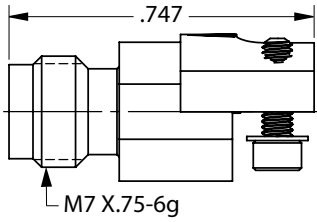


Part Number
3321-60001

¹'TD' suffix are pre-tinned

1.85mm Series

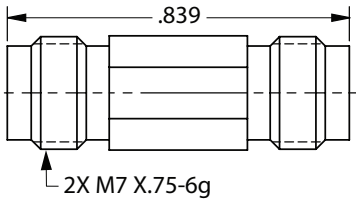
Female PCB Solderless Edge Mount Connector, 2 Hole



Part Number

SF3321-60021

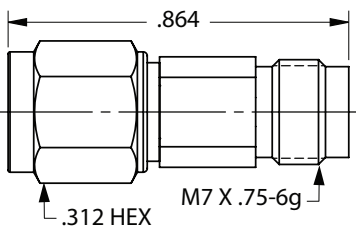
1.85mm Female to Female Adapter



Part Number

SF1133-6008

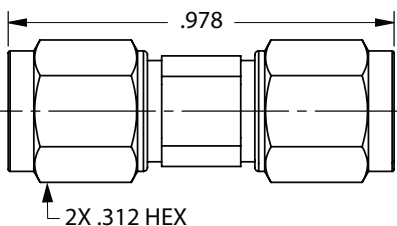
1.85mm Male to Female Adapter



Part Number

SF1133-6010

1.85mm Male to Male Adapter



Part Number

SF1133-6009