

## 2.4mm Interface at a Glance

The 2.4mm connector was developed for use to 50 GHz. This connector series uses a thick outer wall to eliminate the fragility seen in SMA and 2.92mm connectors. The female socket is also strengthened to ensure reliable mating. The 2.4mm series mates with SMA, 3.5mm and 2.92mm connectors with adapters and can mate with the 1.85mm series without adapters.

### Electrical Specifications

Impedance	50Ω
Frequency	50 GHz
VSWR	1.03 + .005 f
Insertion Loss	.04 √ f
Shielding Effectiveness	≥ 100 dB

### Mechanical Specifications

Mating Cycles	500
Recommended Torque	5 - 7 in - lbs
Inter-mate ability	1.85mm

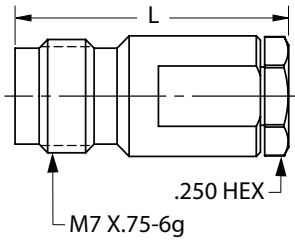
### Environmental Specifications

Temperature Rating	-65°C to +165°C
Corrosion (Salt Spray)	MIL-STD-202, Method 101, Condition B
Vibration	MIL-STD-202, Method 204, Condition D, 20 Gs
Shock	MIL-STD-202, Method 213, Condition I, 100 Gs
Thermal Shock	MIL-STD-202, Method 107. Cond. B, -65°C to +125°C
Moisture Resistance	MIL-STD-202, Method 106, Less Step 7B
Barometric Pressure (Altitude)	MIL-STD-202, Method 105, Condition C, 70k Ft.

Note: Specifications, dimensions and images are typical for the series and may vary by part number

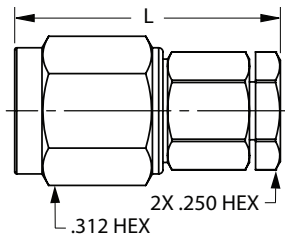
# 2.4mm Series

## Female Cable Connector



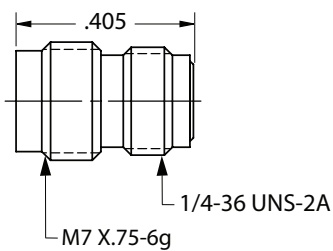
Cable	Part Number	L
0.047	<a href="#">SF1621-60014</a>	.671"
0.085	<a href="#">SF1621-60009</a>	.679"

## Male Cable Connector



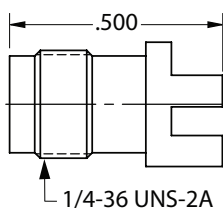
Cable	Part Number	L
0.047	<a href="#">SF1611-60001</a>	.633"
0.085	<a href="#">SF1611-60003</a>	.580"

## Female Sparkplug Connector, Accepts Ø.008" Pin



Part Number
<a href="#">SF1675-6004</a>

## Female PCB Edge Launch Connector, .062" PCB Thickness

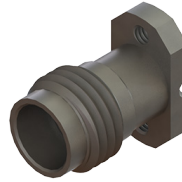
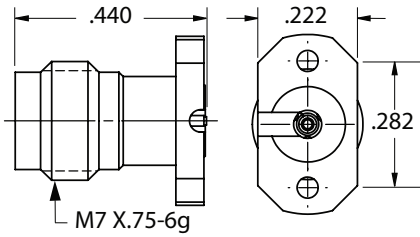


Part Number
<a href="#">1621-60008</a>

*\*TD' suffix are pre-tinned*

# 2.4mm Series

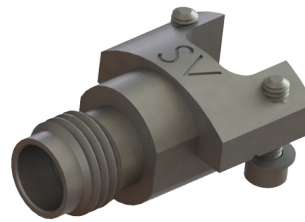
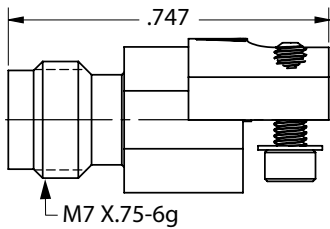
## Female PCB Solderless Compression Mount Connector, 2 Hole



Part Number	Descr.
<a href="#">SF1621-60026</a>	Microstrip
<a href="#">SF1621-60029</a>	Stripline

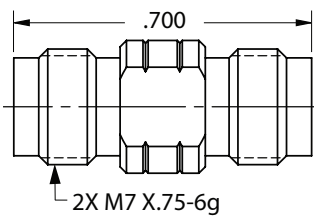
*'-1S' with 4.76mm and '-2S' with 6.35mm screws*

## Female PCB Solderless Edge Mount Connector, 2 Hole



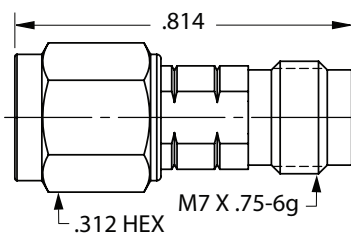
Part Number
<a href="#">SF1621-60036</a>

## 2.4mm Female to Female Adapter



Part Number
<a href="#">SF1116-6053</a>

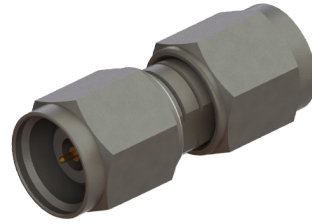
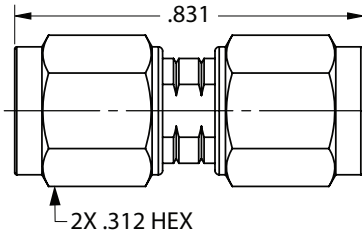
## 2.4mm Male to Female Adapter



Part Number
<a href="#">SF1116-6040</a>

# 2.4mm Series

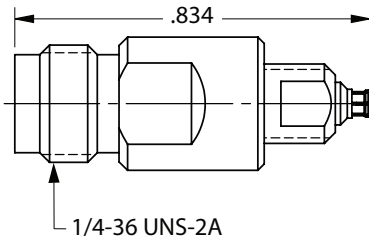
## 2.4mm Male to Male Adapter



Part Number

SF1116-6039

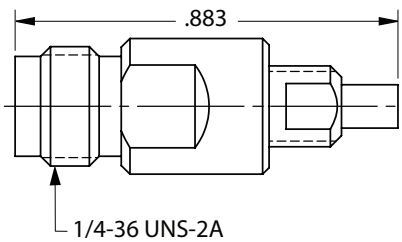
## 2.4mm Female to SMPS Female Adapter



Part Number

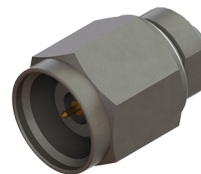
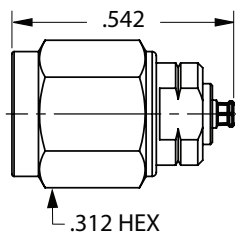
SF1116-6022

## 2.4mm Female to SMPS Male Adapter



Detent	Part Number
SB	SF1116-6066
FD	SF1116-6021

## 2.4mm Male to SMPS Female Adapter



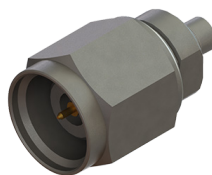
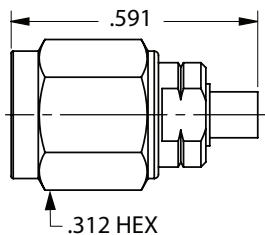
Part Number

SF1116-6025

2.4mm Series

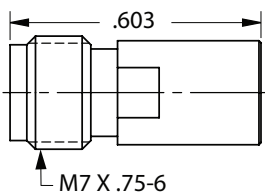
# 2.4mm Series

## 2.4mm Male to SMPS Male Adapter



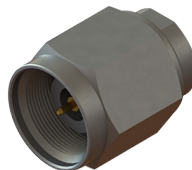
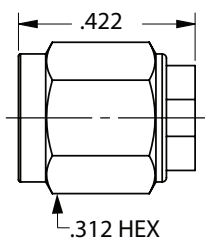
Detent	Part Number
SB	<a href="#">SF1116-6023</a>
FD	<a href="#">SF1116-6024</a>

## Female Termination



Part Number
<a href="#">SF8016-6402</a>

## Male Termination



Part Number
<a href="#">SF8016-6404</a>

2.4mm Series