

# 2.92mm Series

## 2.92mm Interface at a Glance

The 2.92mm connector was developed for use to 40 GHz. The male pin is shorter than that of an SMA or 3.5mm to ensure that the outer contacts of the male and female connectors engage before the pin and female receptacle do. This ensures that the pin and socket will not see excessive wear and mating stress seen by misalignment in an SMA or 3.5mm connector. The 2.92mm connector also has a thicker wall than a standard SMA. The 2.92mm series mates with SMA and 3.5mm connectors.

### Electrical Specifications

Impedance	50Ω
Frequency	40 GHz
VSWR	1.03 + .005 f
Insertion Loss	.04 √ f
Shielding Effectiveness	≥ 100 dB

### Mechanical Specifications

Mating Cycles	500
Mating Torque	7 - 10 in - lbs
Inter-mate ability	SMA, 3.5mm

### Environmental Specifications

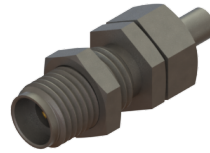
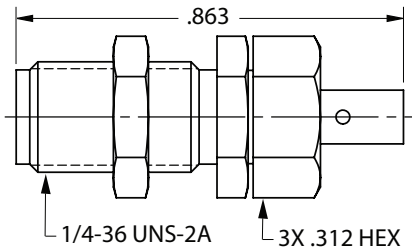
Temperature Rating	-65°C to +165°C
Corrosion (Salt Spray)	MIL-STD-202, Method 101, Condition B
Vibration	MIL-STD-202, Method 204, Condition D, 20 Gs
Shock	MIL-STD-202, Method 213, Condition I, 100 Gs
Thermal Shock	MIL-STD-202, Method 107. Cond. B, -65°C to +125°C
Moisture Resistance	MIL-STD-202, Method 106, Less Step 7B
Barometric Pressure (Altitude)	MIL-STD-202, Method 105, Condition C, 70k Ft.

Note: Specifications, dimensions and images are typical for the series and may vary by part number

# 2.92mm Series

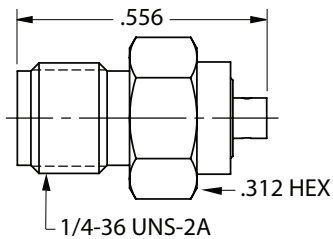
2.92mm Series

## Female Bulkhead Cable Connector



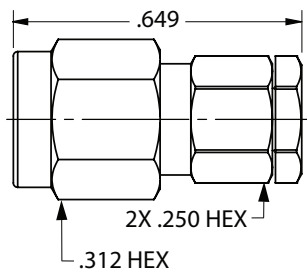
Cable	Part Number
0.085	<a href="#">SF1521-60025</a>

## Female Cable Connector



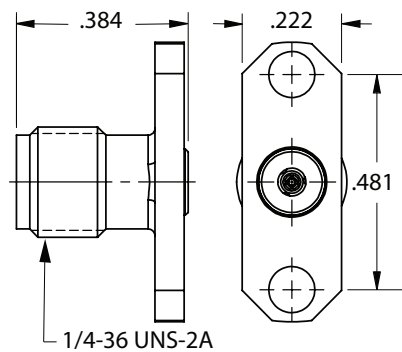
Cable	Part Number
0.047	<a href="#">SF1521-60039</a>
0.085	<a href="#">SF1521-60077</a>

## Male Cable Connector



Cable	Part Number
0.047	<a href="#">SF1511-60069</a>
0.085	<a href="#">SF1511-60071</a>
0.141	<a href="#">SF1511-60044</a>

## Female Flange Mount Connector, 2 Hole (Accepts Ø.012" Pin)

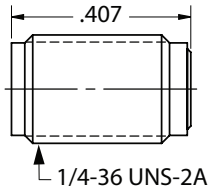


Part Number
<a href="#">SF1552-6002</a>

# 2.92mm Series

2.92mm Series

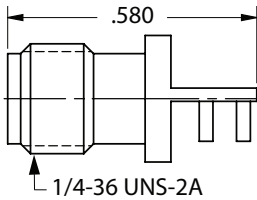
## Female Sparkplug Connector, Accepts Ø.012" Pin



Part Number

SF1575-6007

## Female Edge Launch Connector, 4 Leg

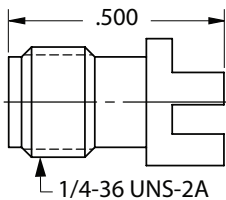


Part Number

1521-00002

*‘TD’ suffix are pre-tinned*

## Female PCB Edge Launch Connector, .062" PCB Thickness

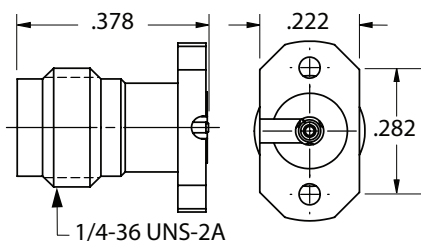


Part Number

1521-60051

*‘TD’ suffix are pre-tinned*

## Female PCB Solderless Compression Mount Connector, 2 Hole



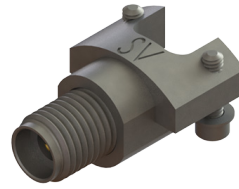
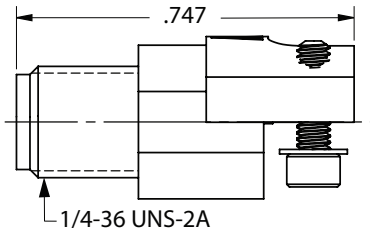
Part Number	Decr.
SF1521-60061	Stripline
SF1521-60070	Microstrip

*‘-1S’ with 4.76mm and ‘-2S’ with 6.35mm screws*

# 2.92mm Series

2.92mm Series

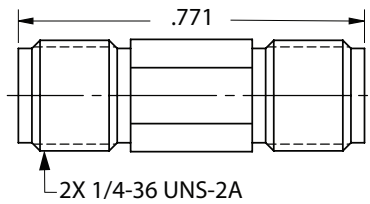
## Female PCB Solderless Edge Mount Connector, 2 Hole



Part Number

SF1521-6010Z

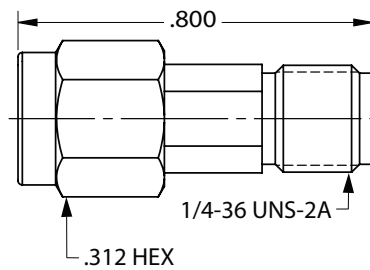
## 2.92mm Female to Female Adapter



Part Number

SF1590-6000

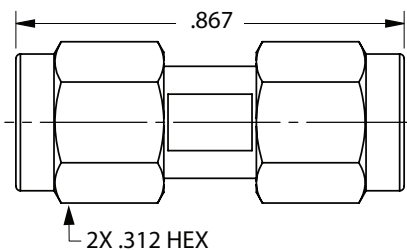
## 2.92mm Male to Female Adapter



Part Number

SF1597-6003

## 2.92mm Male to Male Adapter



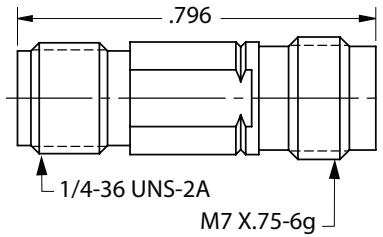
Part Number

SF1593-6000

# 2.92mm Series

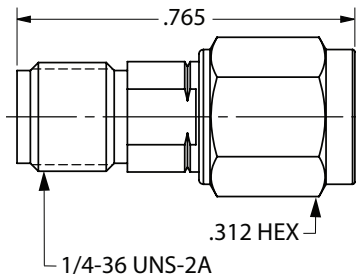
2.92mm Series

## 2.92mm Female to 2.4mm Female Adapter



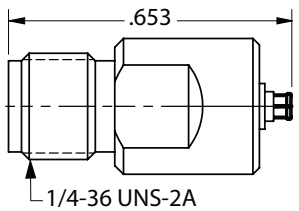
Part Number
SF1116-6004

## 2.92mm Female to 2.4mm Male Adapter



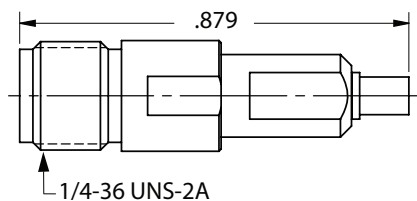
Part Number
SF1116-6002

## 2.92mm Female to SMPS Female Adapter



Part Number
1138-6009

## 2.92mm Female to SMPS Male Adapter

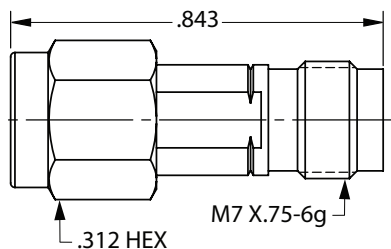


Detent	Part Number
SB	SF1138-6024
FD	SF1138-6015

# 2.92mm Series

2.92mm Series

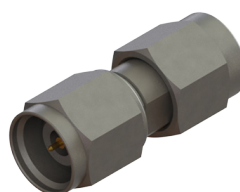
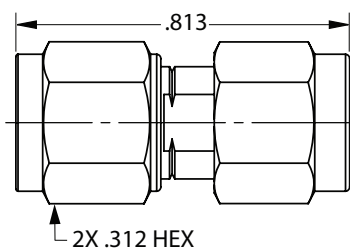
## 2.92mm Male to 2.4mm Female Adapter



Part Number

SF1116-6003

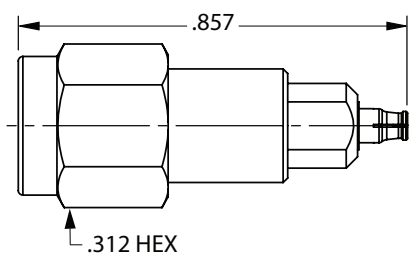
## 2.92mm Male to 2.4mm Male Adapter



Part Number

SF1116-6007

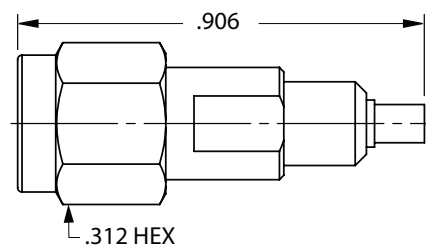
## 2.92mm Male to SMPS Female Adapter



Part Number

SF1115-6091

## 2.92mm Male to SMPS Male Adapter

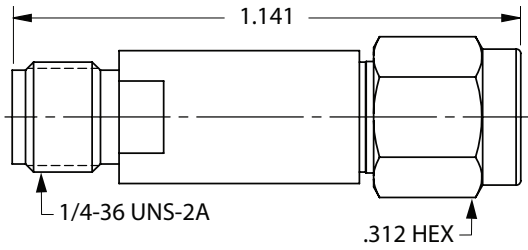


Detent	Part Number
SB	SF1115-6090
FD	SF1115-6089

# 2.92mm Series

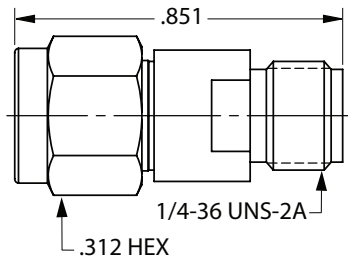
2.92mm Series

## 2.92mm Female to Male Attenuator, 32 GHz



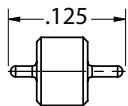
Part Number	Decr.
<a href="#">M3933/30-XXN</a>	Nonscreened
<a href="#">M3933/30-XXS</a>	Screened

## 2.92mm Male to Female Attenuator, 40 GHz



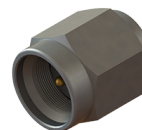
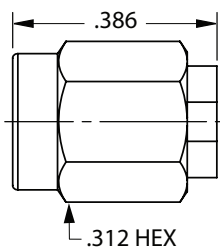
Part Number
<a href="#">SF0915-6200-XX</a>

## Feed-Thru Hermetic Seal, Accepts Ø.012" Pin



Part Number
<a href="#">066-15-000</a>

## Male Termination



Part Number
<a href="#">SF8015-6002</a>