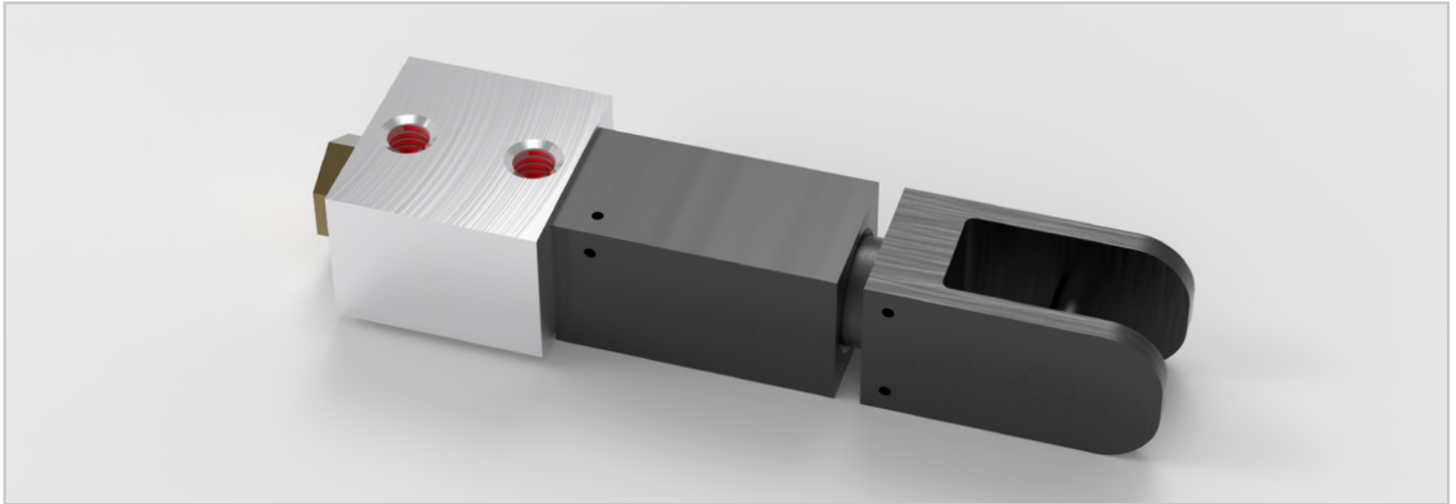


## Adjustable Keeper with Mounting Block

P/N 200-105929-101

### INTRODUCTION



Adjustable Keeper with Mounting Block (P/N 200-105929-101)

Designed as an upgrade to the NAS1637 Adjustable Keeper with Mounting Provisions, this product interfaces with the NAS1637 latch to retain Line Replaceable Units (LRUs) into ARINC 404-style trays.

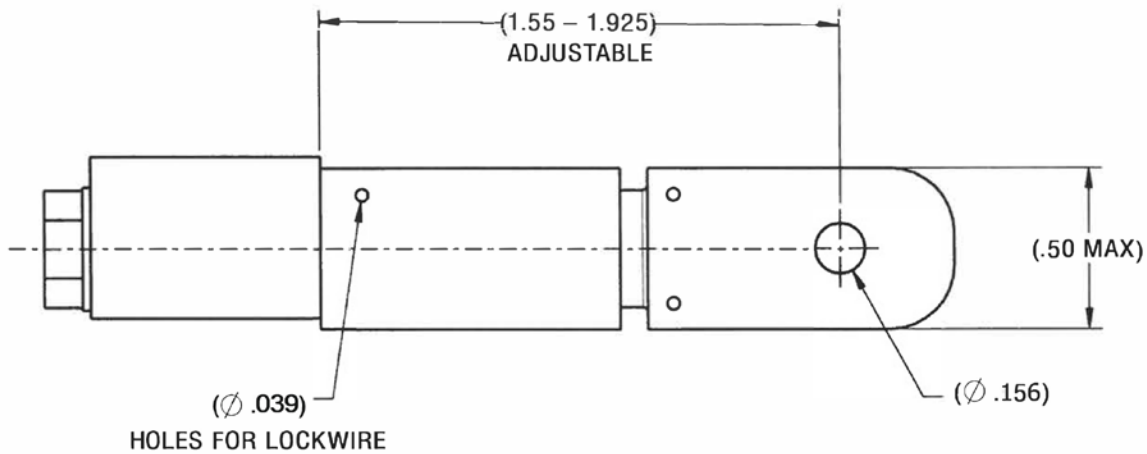
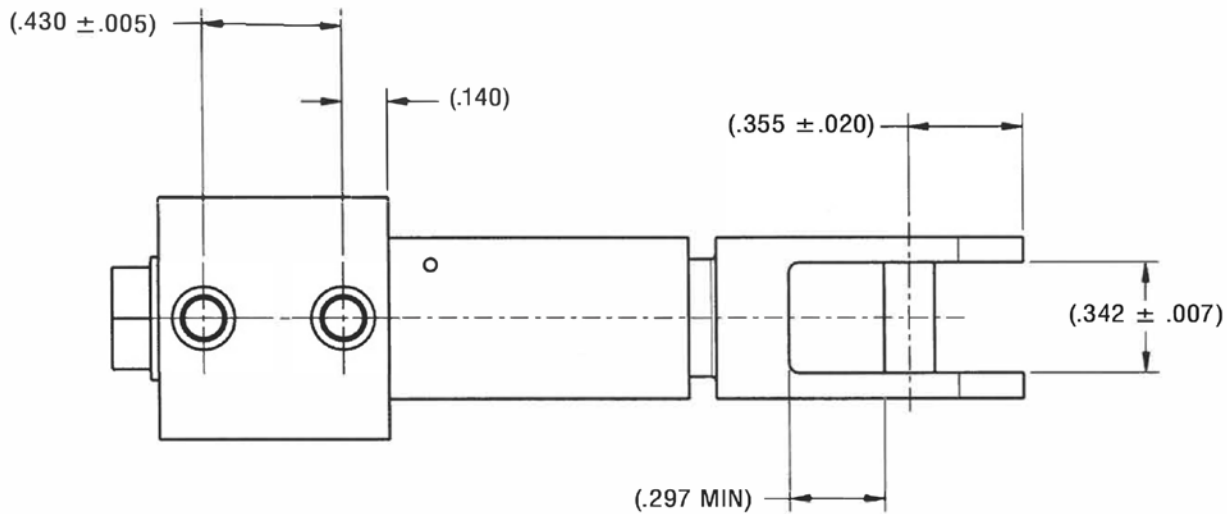
With upgraded materials, finishes, and additional features, it:

- » Exceeds the performance and user experience of build-to-spec NAS1637 keepers
- » Includes a mounting block that allows for installation on avionic trays and maximizes the adjustment range of the keeper

FEATURES	BENEFITS
Structural anodized aluminum construction	<ul style="list-style-type: none"> <li>• Minimal concerns for galvanic corrosion compared to the to-spec design.</li> </ul>
Lockwire holes	<ul style="list-style-type: none"> <li>• Allows for use of .032" diameter lock wire to prevent rotation of assembly when LRU is not installed.</li> </ul>
Free running screw thread inserts	<ul style="list-style-type: none"> <li>• Greatly improved user experience when adjusting length of product in the field.</li> </ul>
O-ring	<ul style="list-style-type: none"> <li>• Prevents accidental disassembly of product before it is installed.</li> </ul>
Large adjustable length	<ul style="list-style-type: none"> <li>• Adjustable range eclipses that of a to-spec NAS1637 adjustable keeper. Screw connecting the mounting block to the Adjustable Keeper has an optimized length to maintain large adjustment range (1.55" – 1.925").</li> </ul>

# Adjustable Keeper with Mounting Block

P/N 200-105929-101



*\*All measurements are in inches.*