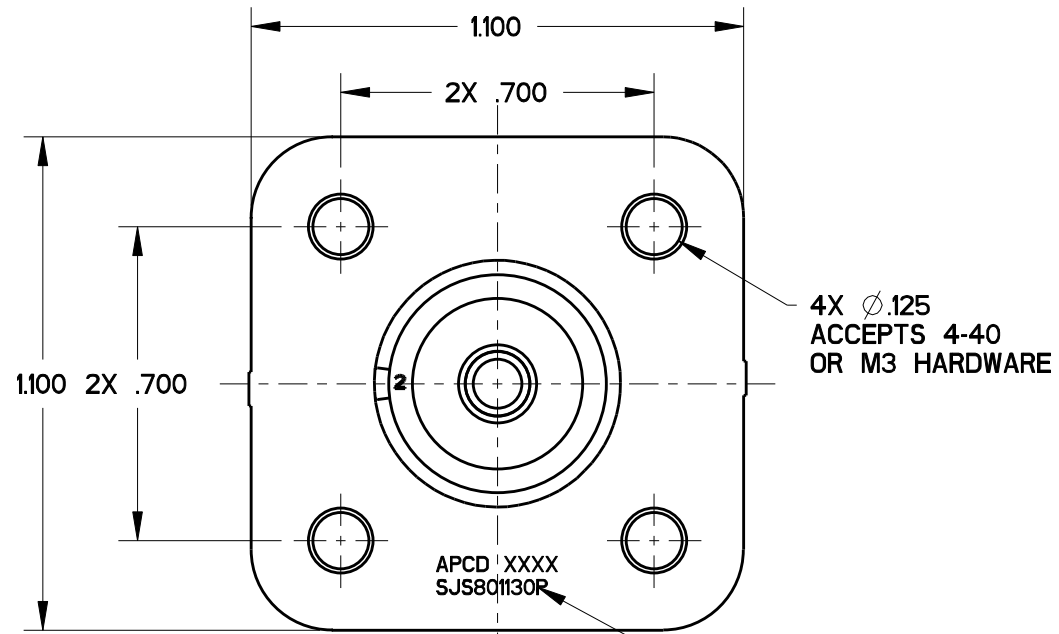


SJS801130P_CE

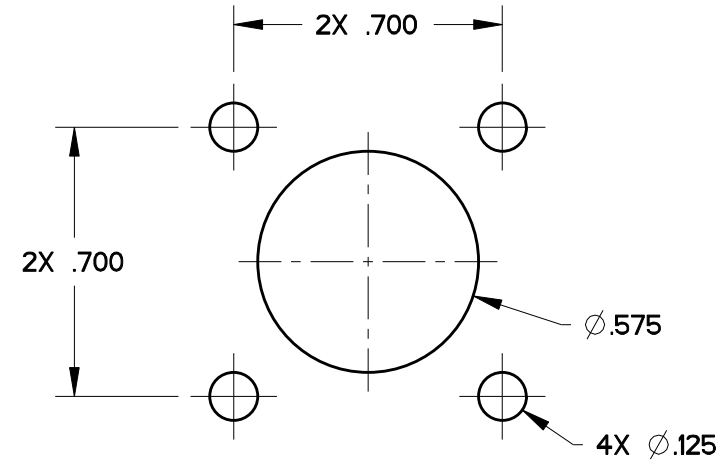
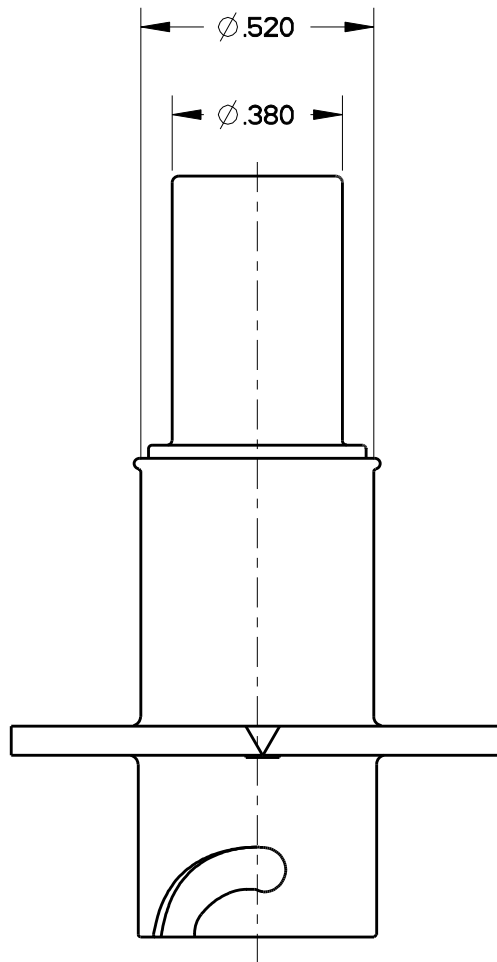
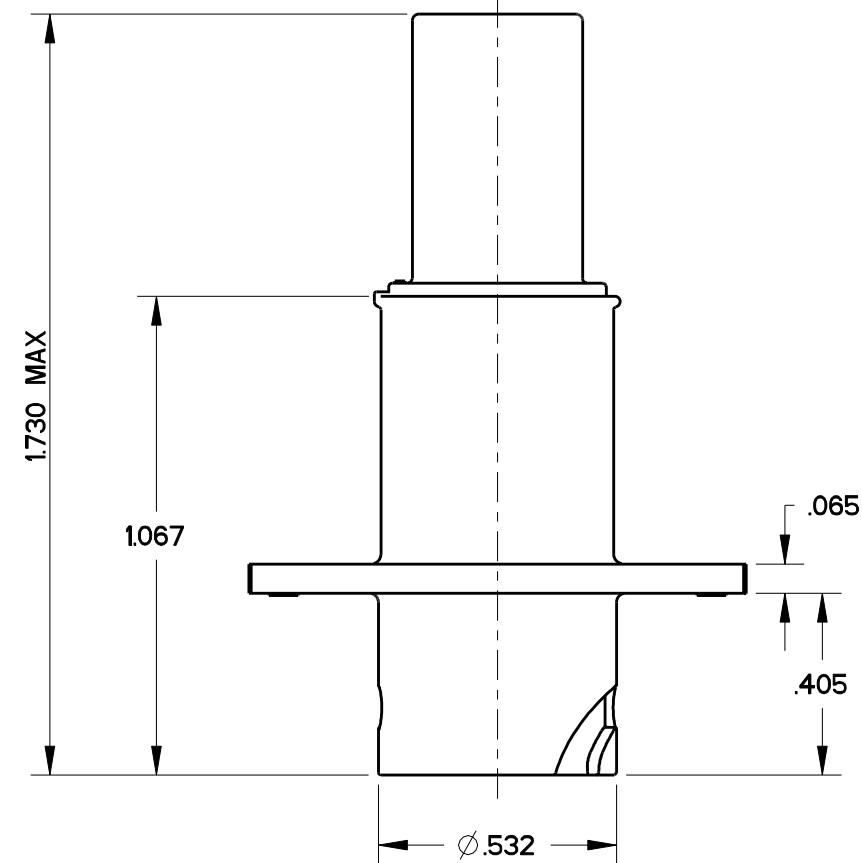
APCD P/N	P/N MARKING(S)	CONTACTS SUPPLIED
SJS801130P	SJS801130P	NONE
SJS801130PW		CNP882100 (TWINAX CONTACT)
SJS801130PQ		CNP882300 (QUADRAX CONTACT)

REV	ECN	APP'D
1		

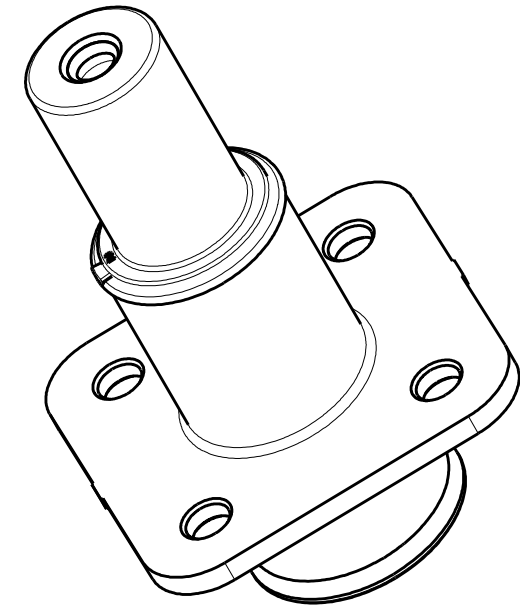


4X Ø.125
ACCEPTS 4-40
OR M3 HARDWARE

BLACK MARKING
DATE CODE
FONT HEIGHT: .04"



MOUNT PANEL CUT OUT
SCALE 2:1



- NOTES:
- MATERIALS:
HOUSING: ULTEM CRS5011
CONTACT RETAINER: STAINLESS STEEL
BOOT/SEAL: SILICONE RUBBER PER A-A-59588
DUST CAP: EPDM 535
 - FINISH:
HOUSING: NICKEL 200 MICROINCH MINIMUM
OVER COPPER 120 MICROINCH MINIMUM
 - MATING CONTACTS: SEE TABLE
 - SEALING BOOT IS INSTALLED IN WIRE END,
REMOVE BEFORE ASSEMBLY OF CONTACT
 - PART MATES WITH SJS801110P
 - WEIGHT: 6 GRAMS
 - SUPPLIED WITH DUST CAP

DIMENSIONS ANSI Y14.5M UNITS: INCHES Pro/E FILE	TOLERANCES .XX ±.01 .XXX ±.005 ANGLES ±2.0°	PROJECTION 	Amphenol Pcd SPECIFICATION DRAWING		TITLE INLINE RECEPTACLE SJS PEGASUS SHELL SIZE 8 SQUARE FLANGE, ONE POS SIZE 8	
			DRWN Mickey.Zhang Jan-18-16	ENGR	SIZE B	DWG NO. SJS801130P_CE
THIS DOCUMENT CONTAINS PROPRIETARY INFORMATION WHICH IS THE CONFIDENTIAL PROPERTY OF AMPHENOL PCD INC., BEVERLY, MA			APPD	CODE: 58982	SCALE: 7:3	SHEET 1 OF 1

SJS801130P_CE

SJS801130P_CE