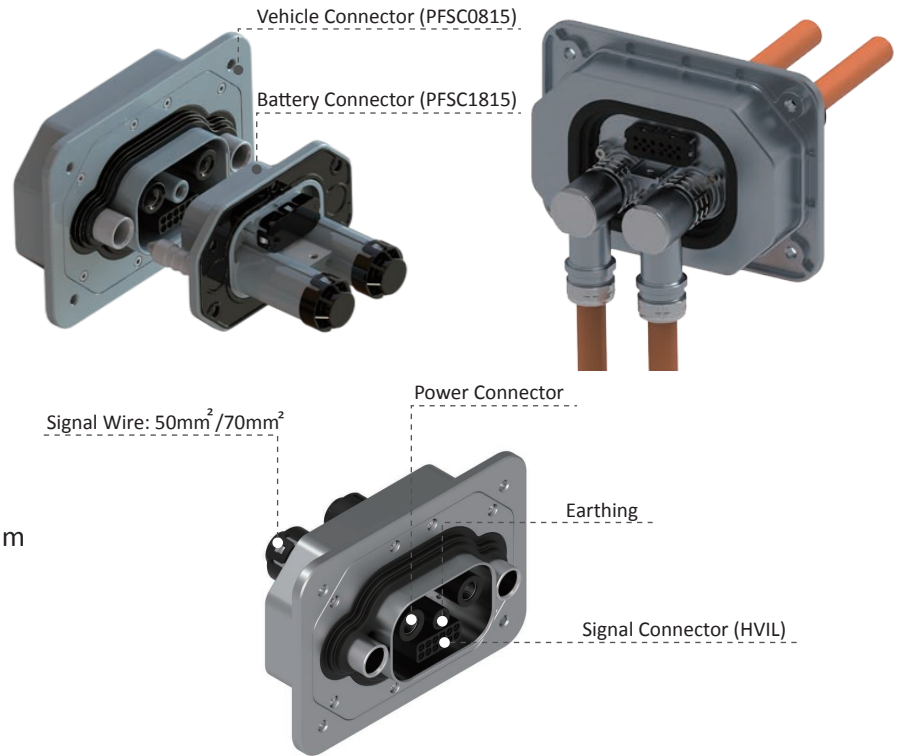


SWAPPING HIGH VOLTAGE CONNECTOR

SPECIFICATIONS

- Operating temperature: -40°C~+125°C
 - Voltage rating: 1000V/DC
Dielectric withstand voltage:
Power: 3000V/DC
Signal: 1500V/DC
 - Current rating of Cable:
Power: 200A, 50mm²
300A, 70mm²
Signal (HVIL): 1A, 8mm²
 - High Voltage Interlock (HVIL)
 - With temperature monitoring (Vehicle Side)
 - With quick removal cable or busbar termination
 - Protection class: Mated-IP6K9K & IP67, unmated-IP2X
 - Mating cycle: 10,000 (electrical), 3,000 (seals)⁽¹⁾
 - Offer tolerance compensation of X/Y ±6 mm, Z +0/-10 mm
 - UL94-V0 Insulators
 - Vibration level: GB/T 37133-2018 (equal to LV214 V2)
 - Salt spray level: 480H
- (1): The seals are replaceable.



APPLICATIONS



Swapping Plug (battery) Type A

Wiring Method: Busbar
Application: Battery
Temperature Sensor: YES (Customized)



Swapping Plug (battery) Type B

Wiring Method: HV shielded cable 35/50/70
Application: Battery
Temperature Sensor: N/A



Swapping Receptacle (vehicle) Type A

Wiring Method: HV shielded cable 35/50/70
Application: Vehicle
Temperature Sensor: YES (Customized)



Swapping Receptacle (vehicle) Type B

Wiring Method: Busbar
Application: Vehicle
Temperature Sensor: YES (Customized)

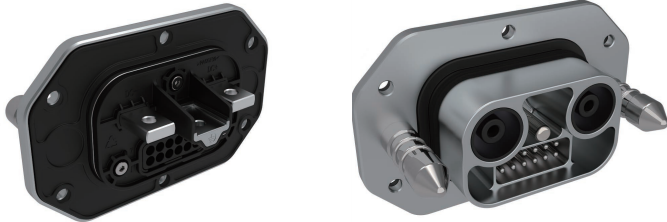
ADVANTAGES

- High-Strength Metal Materials
- Fast Separation Connection Mode (Vehicle Side)
- Custom Solution



PRODUCT DETAILS

Swapping Plug (battery) Type A



PFSC3815 - 30 1 - TS 1 - D6

HVIL	Temperature Sensor	Hole Type
"0": NO HVIL "1": With HVIL	"0": NO temperature Sensor "1": With temperature Sensor	"D": Through Hole "M": Thread Hole

Description	Part Number	Temperature Sensor
PFSC3815-300-TS0-D6	AC-HA029056	W/O
PFSC3815-300-TS1-D6	AC-HA029057	With
PFSC3815-301-TS0-D6	AC-HA029058	W/O
PFSC3815-301-TS1-D6	AC-HA029059	With
PFSC3815-300-TS0-D8	AC-HA029060	W/O
PFSC3815-300-TS1-D8	AC-HA029061	With
PFSC3815-301-TS0-D8	AC-HA029062	W/O
PFSC3815-301-TS1-D8	AC-HA029063	With

Swapping Plug (battery) Type B

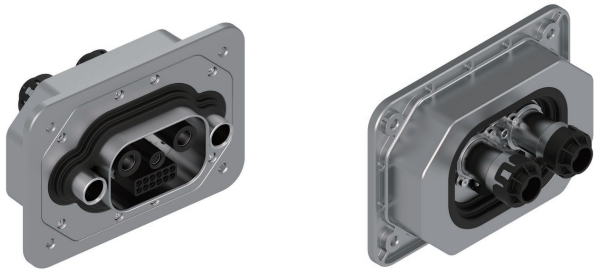


PFSC1815 - 30 1 - 70

HVIL	Cable Size
"0": NO HVIL "1": With HVIL	"70": 70 mm ² "50": 50 mm ²

Description	Part Number	Temperature Sensor
PFSC1815-300-50	AC-HA025316	N/A
PFSC1815-300-70	AC-HA025317	N/A
PFSC1815-301-50	AC-HA025318	N/A
PFSC1815-301-70	AC-HA023420	N/A

Swapping Receptacle (vehicle) Type A

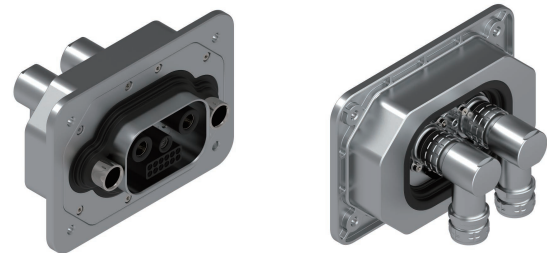


PFSC2815 - 30 1 - TS 1 - 70

HVIL	Temperature Sensor	Cable Size
"0": NO HVIL "1": With HVIL	"0": NO temperature Sensor "1": With temperature Sensor	"70": 70 mm ² "50": 50 mm ²

Description	Part Number	Temperature Sensor
PFSC2815-300-TS1-70	AC-HA026770	With
PFSC2815-300-TS1-50	AC-HA026771	With
PFSC2815-300-TS0-70	AC-HA026772	W/O
PFSC2815-300-TS0-50	AC-HA026773	W/O
PFSC2815-301-TS1-70	AC-HA026766	With
PFSC2815-301-TS1-50	AC-HA026767	With
PFSC2815-301-TS0-70	AC-HA026768	W/O
PFSC2815-301-TS0-50	AC-HA026769	W/O

Swapping Receptacle (vehicle) Type B



PFSC0815 - 30 1 - TS 1 - 70

HVIL	Temperature Sensor	Cable Size
"0": NO HVIL "1": With HVIL	"0": NO temperature Sensor "1": With temperature Sensor	"70": 70 mm ² "50": 50 mm ²

Description	Part Number	Temperature Sensor
PFSC0815-300-TS0-50	AC-HA025320	W/O
PFSC0815-300-TS0-70	AC-HA025321	W/O
PFSC0815-300-TS1-50	AC-HA025324	With
PFSC0815-300-TS1-70	AC-HA025325	With
PFSC0815-301-TS0-50	AC-HA025322	W/O
PFSC0815-301-TS0-70	AC-HA025323	W/O
PFSC0815-301-TS1-50	AC-HA025326	With
PFSC0815-301-TS1-70	AC-HA023421	With

EXAMPLE APPLICATION

Power System Solution



Swapping Mode Heavy Truck



Swapping Mode Mixer Truck



Swapping Mode Mining Dump Truck



Swapping Mode Electric Loader



Swapping Mode Electric Ship






Swapping Mode Electric Muck Truck

CONTACT US



 [Website: www.tpil.com](http://www.tpil.com)

North America

Winnipeg, Canada



 Tel: +1 204 697 2222
 Email: sales@tpil.com
 Add: 2110 Notre Dame Avenue

Nogales, Mexico



 Tel: +52(55) 5258 9984
 Add: 482 Mariposa Road Building A, 85621

Asia Pacific

Changzhou, China

 Tel: +86 519-8981 9713
 Email: sales@amphenolgec.com
 Add: No.11 Fengxiang Road, New District, Changzhou, Jiangsu, China

Guangzhou, China

 Tel: +86 203210 6099
 Add: 9th Floor, No.10, the 4th Street, Kehui Jingu, Huangpu District, Guangzhou, China