

### HVC 6.3mm 6 Poles Connector

High voltage, high current, 2.5mm<sup>2</sup> - 6mm<sup>2</sup> wire, metal shielded, HVIL

#### Part No:

##### → Plug:

2.5mm<sup>2</sup> ( φ 4.2- φ 4.7mm)

Connector P/N: HVC6P63FSX02

4.0mm<sup>2</sup> ( φ 5.3- φ 5.8mm)

Connector P/N: HVC6P63FSX04

6.0mm<sup>2</sup> ( φ 6.0- φ 6.5mm)

Connector P/N: HVC6P63FSX06

##### → Socket:

2.5mm<sup>2</sup> :

Connector P/N: HVC6P63MVX02

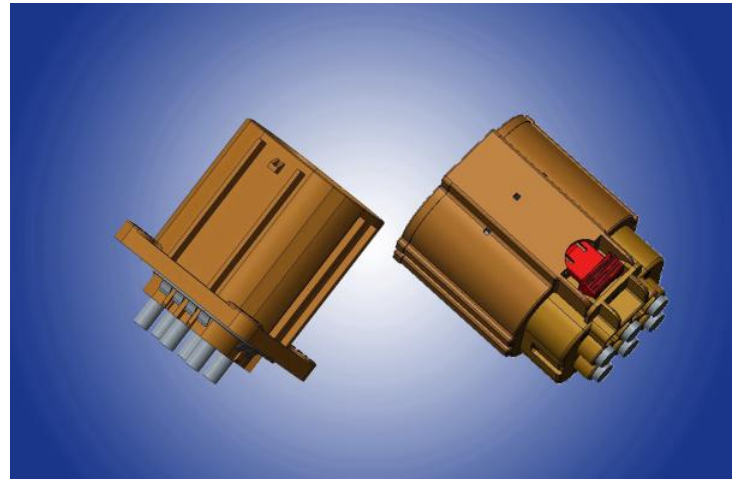
4.0mm<sup>2</sup>

Connector P/N: HVC6P63MVX04

6.0mm<sup>2</sup>

Connector P/N: HVC6P63MVX06

"X" :1/2 ; According to code A/B

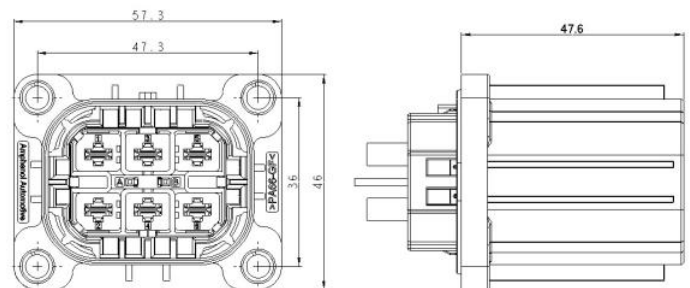


#### Construction:

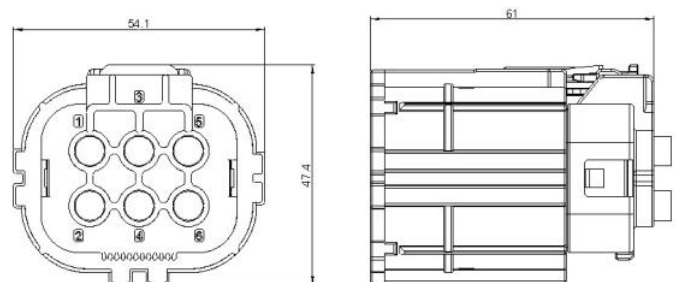
- Housing material: Plastic Parts
- Terminal material: Copper alloy
- RFI/EMI protection: Metal shielding

#### Dimensional characteristics:

Socket Side:



Plug Side:



#### Performance characteristics:

- Operation force: ≤100N
- Temperature range: -40°C to +140°C
- Voltage range: 1000V DC
- Withstand Voltage: 2500V/AC, 1Min
- IP67, IP6K9K, IPXXD(Mated), IPXXB(Seperated)
- Mating cycles: 50min
- Power Rated (@85°C):
  - 2.5mm<sup>2</sup>=20A
  - 4.0mm<sup>2</sup>=28A
  - 6.0mm<sup>2</sup>=35A