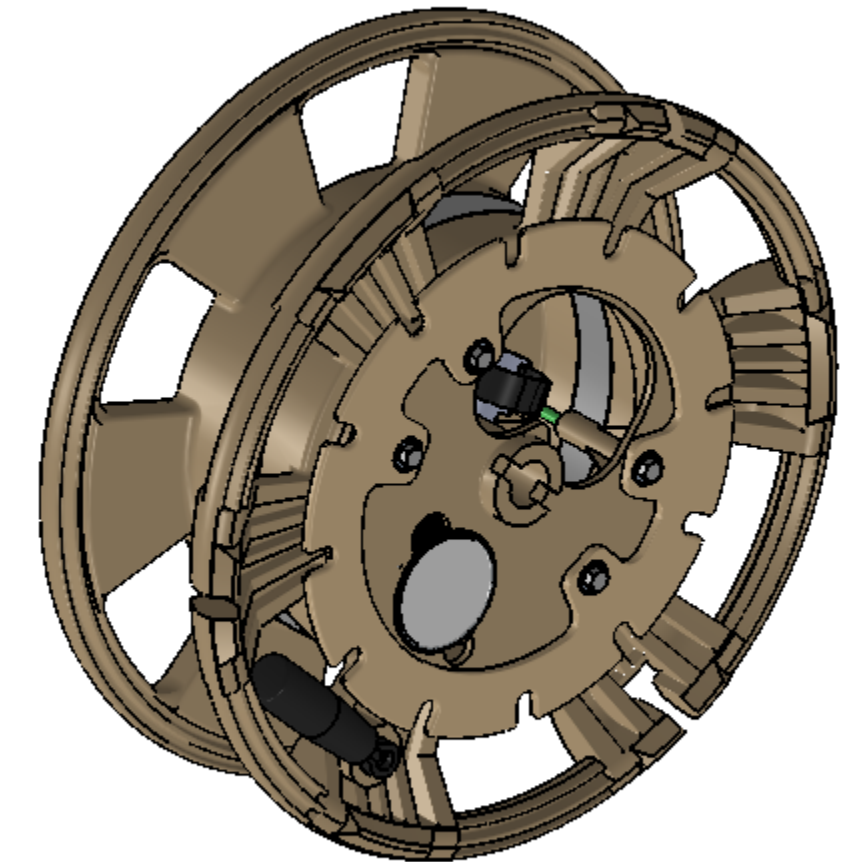
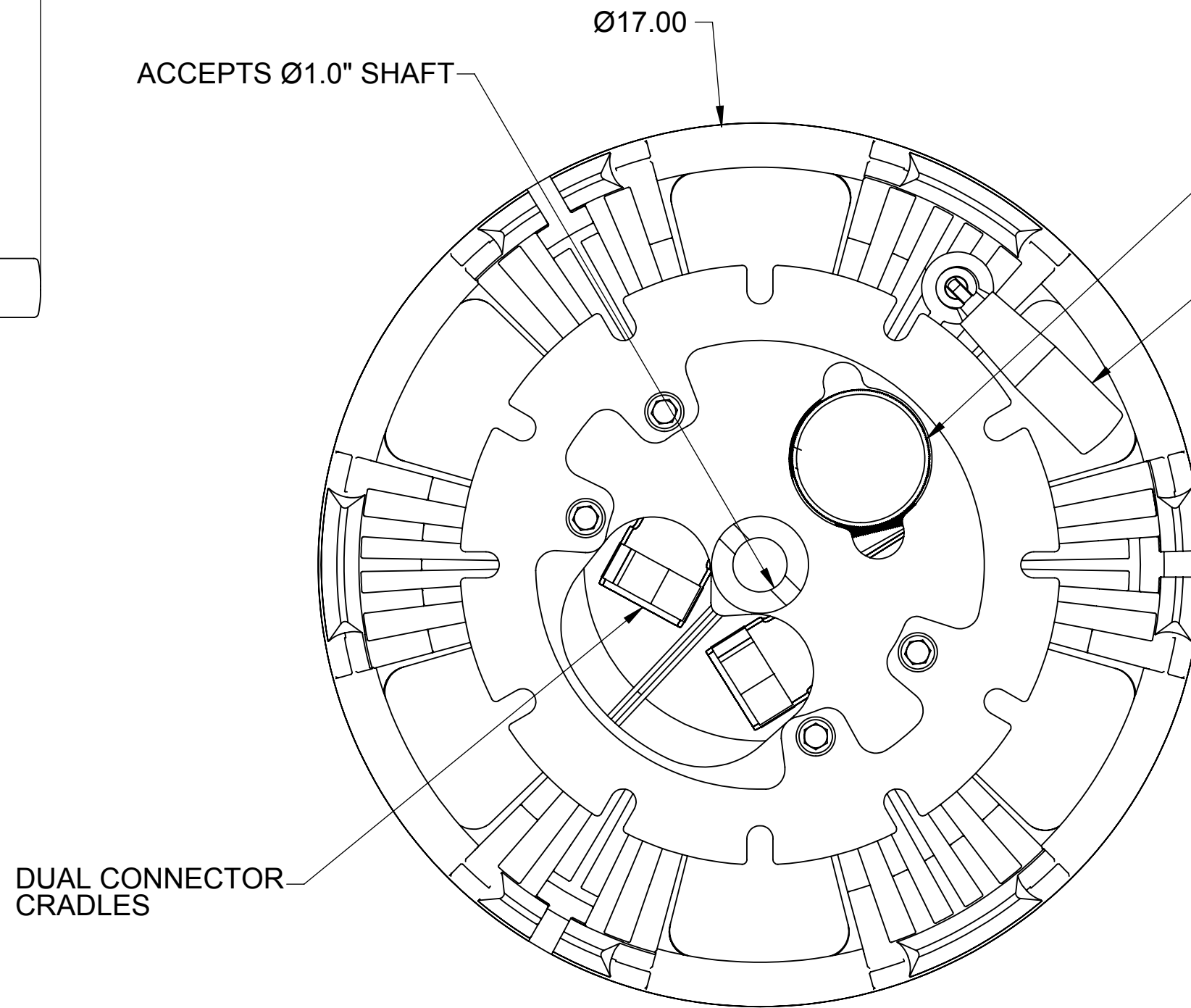
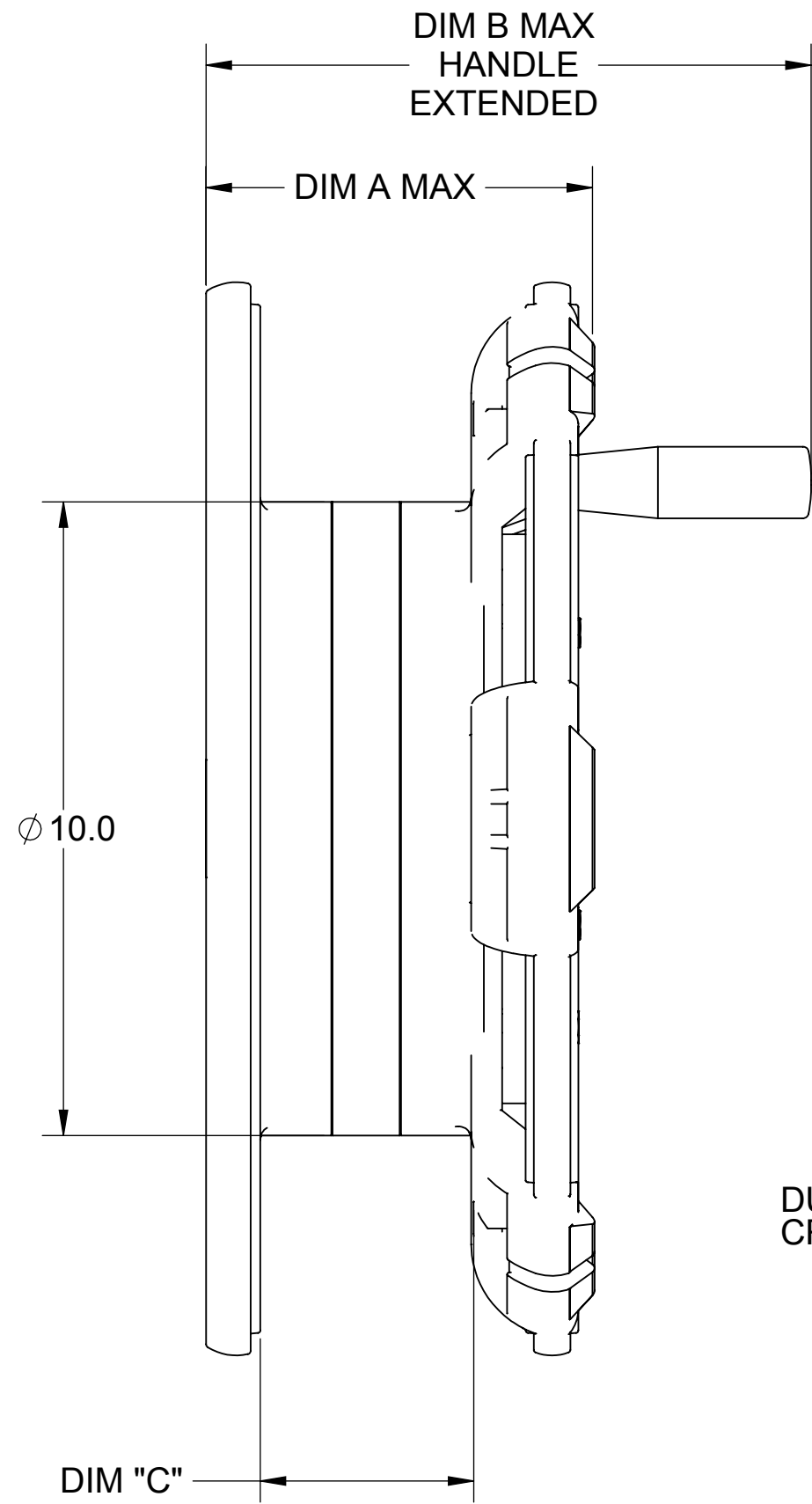


NOTES: UNLESS OTHERWISE SPECIFIED

1. CAPACITY: 100M OF 5.5mm DIAMETER CABLE
2. CAPACITY: 150M OF 5.8mm DIAMETER CABLE
3. CAPACITY: 250M OF 5.8mm DIAMETER CABLE

REVISION HISTORY			
REV	DESCRIPTION	DATE	APP
A	INC ECN 121105-0905, XLT	2012/11/05	JW
B	ECN 140107-1607, XLT	2014/01/08	MH
C	ECN 141009-1111, XLT	2014/10/09	JW
D	ECN 150123-1524, RLF	2015/02/05	BDC



PRODUCT NUMBER IDENTIFICATION
ARES-XXX-

REEL COLOR OPTION
T - TAN
A - GREY
G - GREEN

100 = 100 METERS
150 = 150 METERS
250 = 250 METERS

PART NO.	DIM A	DIM B	DIM C
ARES-100	5.10	8.50	2.24
ARES-150	6.20	9.60	3.34
ARES-250	8.40	11.80	5.54

PRODUCT DRAWING

DFT	MH	2012/01/17
CHK	JW	2012/01/17
ENG	MH	2012/01/17
APP	JW	2012/01/17

DO NOT SCALE DRAWING
UNLESS OTHERWISE SPECIFIED
DIM ARE IN INCHES
TOL ON ANGLES ±3
1 PL ±.1 2 PL ±.02 3 PL ±.010
INTERPRET DIM AND TOL PER
ASME Y14.5-2009



TITLE
**DEPLOYABLE FIBER OPTIC
REEL SYSTEM**

SIZE	CAGE CODE	DWG NO	REV
C	ØYPM2	ARES-XXX	D
SCALE	1:1		SHEET 1 OF 1

Copyright © 2011 Amphenol Fiber Systems International. Non published work. All rights reserved.