

AMPHENOL INDUSTRIAL PRODUCTS GROUP RMT MARKET & PRODUCT PRESENTATIONS

AMPHENOL CORPORATION

- OVER 80 YEAR HISTORY, LISTED ON NYSE SINCE 1991
- SECOND LARGEST INTERCONNECT MANUFACTURER IN THE WORLD



- HIGH TECHNOLOGY INTERCONNECT SOLUTIONS
- LEADING POSITIONS IN DIVERSE MARKETS

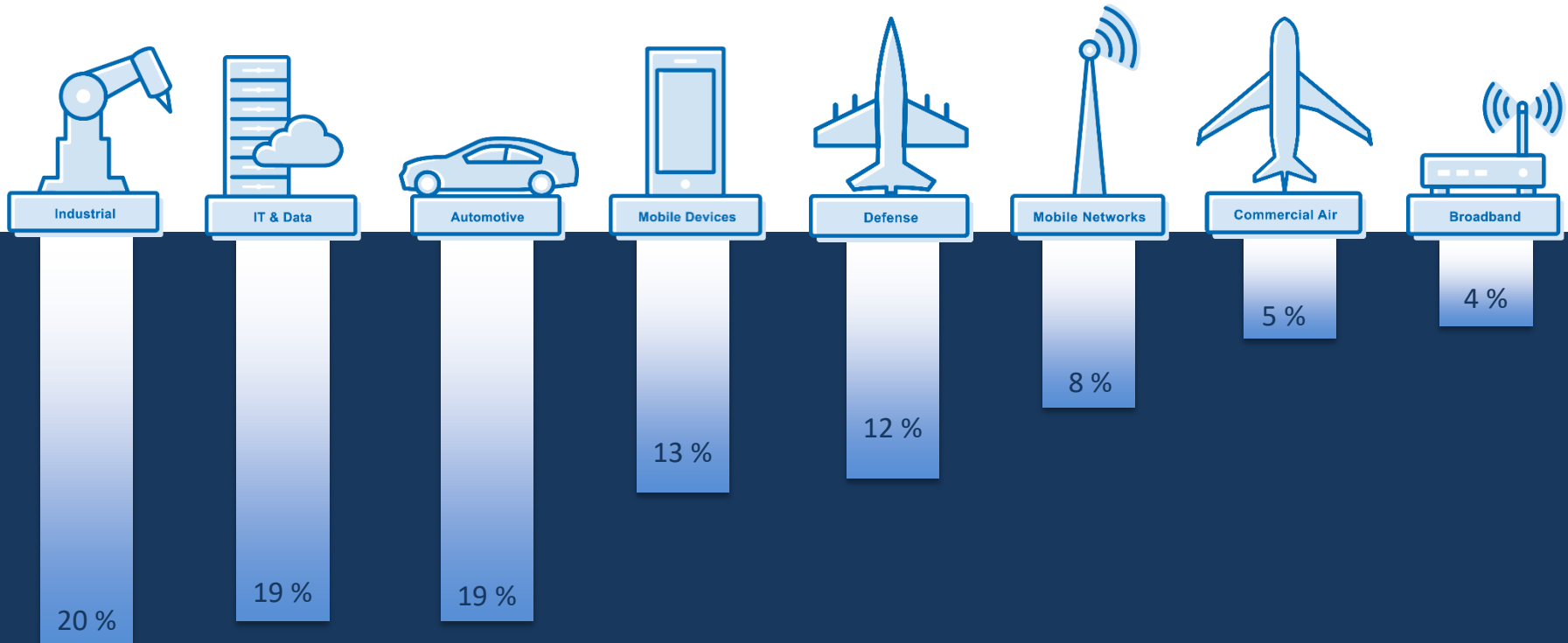


- BROAD GLOBAL PRESENCE AND CAPABILITY
- OVER 74,000 EMPLOYEES WORLDWIDE
- TOTAL NET SALES 2019: US \$ 8.225 BILLION



GLOBAL LEADER IN THE MARKET

% SALES BY MARKET

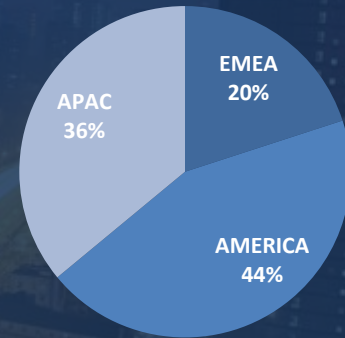


GLOBAL PRESENCE IN THE MARKET

% SALES BY MARKET



% SALES BY REGION



Operations

Australia	France (8)	Italy (2)	Morocco	Taiwan (5)
Brazil (3)	Germany (8)	Japan (5)	Poland (1)	Tunisia (3)
Canada (7)	HQ USA (44)	Korea (5)	Puerto Rico	United Kingdom (4)
China (38)	India (7)	Macedonia	Singapore (4)	
Czech Republic (2)	Indonesia	Malaysia (4)	Slovakia (2)	
Estonia (3)	Israel	Mexico (6)	Switzerland (1)	

Sales Location

Argentina (2)	Netherlands (2)
Austria	Russia
Dubai	Spain
Finland	South Africa
Germany	Sweden (2)
Hong Kong	Turkey
Ireland	Vietnam



74,000 Employees

HIGH PERFORMANCE STRATEGY

COMPLEMENTARY ACQUISITIONS
WITH NEW TECHNOLOGY, STRONG MANAGEMENT
AND MARKET PENETRATION

TECHNOLOGY

DIVERSITY

GLOBAL

LOW COST

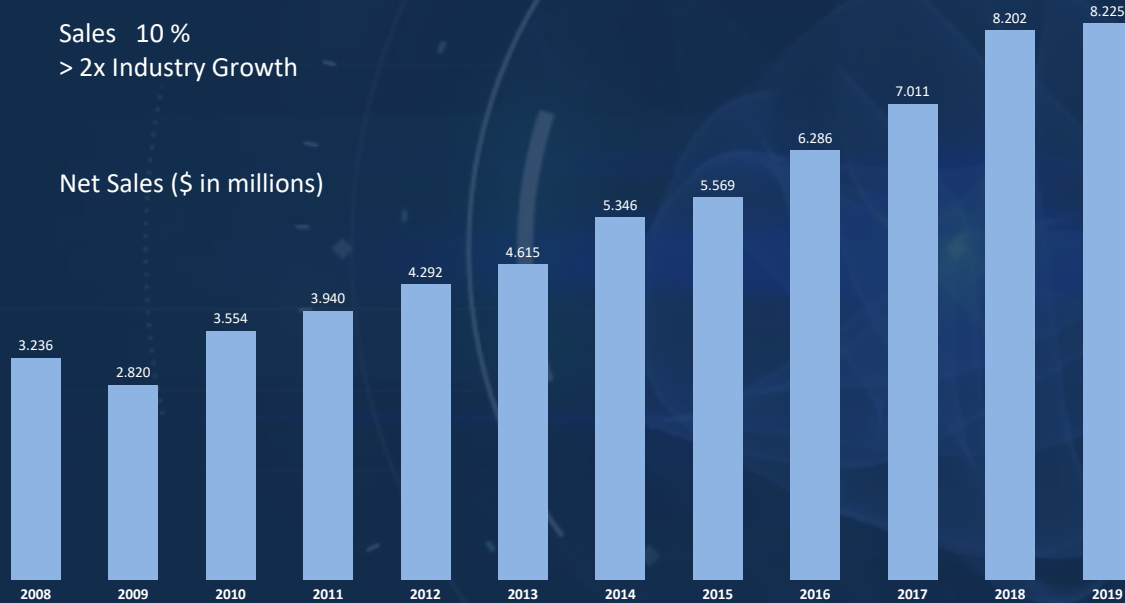
ENTREPRENEURIAL ORGANIZATION WITH SEPARATE P&L'S
HEADED BY STRONG LEADERS AND QUICK DECISION MAKERS

EXCELLENT RECORD OF ACHIEVEMENTS

AMPHENOL 10 Year CAGR

Sales 10 %
> 2x Industry Growth

Net Sales (\$ in millions)



- INDUSTRY LEADING GROWTH FOR OVER A DECADE
- INDUSTRY LEADING OPERATING PROFIT MARGINS IN ALL BUSINESS CYCLES
- STRONG CASH FLOW GENERATION
- SUCCESSFUL ACQUISITION PROGRAM IN CONSOLIDATING INDUSTRY

CUSTOMERS IN STRATEGIC MARKETS





AMPHENOL INDUSTRIAL PRODUCTS GROUP

- 22 OPERATIONS GLOBALLY IN EMEA, AMERICA AND APAC
- LEADING POSITIONS IN DIVERSE INDUSTRIAL SUB MARKETS
- TOTAL NET SALES INDUSTRIAL MARKET 2019: US \$ 1.645 BILLION

AMPHENOL INDUSTRIAL MANUFACTURING OPERATIONS



Amphenol Bernd Richter
Wipperfurth, Germany



Amphenol TPI
Winnipeg, Canada



Amphenol Tuchel Industrial
Heilbronn, Germany/Ostrov, CZ



Amphenol NeLson Dunn
Cerritos-CA, USA



Amphenol Industrial Operations
Nogales, Mexico



Amphenol Alden
Brockton-MA, USA



Amphenol Sine
Clinton Township-MI, USA



Amphenol Middle East
UnitedArab Emirates



Amphenol EEC
Chicago-IL, USA



Amphenol Oil&Gas Technologies
Houston-TX, USA



Amphenol DC Electronics
San Jose-CA, USA



Amphenol Australia
Carrum Downs,Australia



Amphenol Conec
Lippstadt, Germany



Amphenol Sincere
Guangzhou, China



Amphenol PCD
Shenzhen, China



Amphenol Goldstar
Baicheng / Yulin, China



Amphenol Daeshin
Bucheon-City, South Korea



Amphenol GEC
Changzhou, China



Amphenol Technology SZ
Shenzhen, China



Amphenol Anytek
Shenzhen, China



Amphenol Technology Zh
Zuhai, China



Amphenol LTW
Taipei, TW/ Kunshan, China



Cable Assemblies

Connectors

Testing

Flex Circuits

AMPHENOL INDUSTRIAL VERTICAL FOCUS MARKETS

HEAVY
EQUIPMENT



RENEWABLE
ENERGY



AUTOMATION &
ROBOTICS



HYBRID &
ELECTRIC VEHICLES



MARINE



TEST, MEASUREMENT &
INSTRUMENTATION



LIGHTING &
ENTERTAINMENT



OIL & GAS



MEDICAL



RAIL MASS
TRANSIT



VERTICAL MARKET
**RAIL MASS
TRANSIT**

- High voltage & High current
- Interconnect for rolling stock and signalling
- IRIS certified plants
- EN45545-2 approval fire/smoke
- High vibration resistant
- IP67 & IP68
- High speed data transmission
- Intercar jumpers



AMPHENOL INDUSTRIAL SOLUTION FOR RAIL MASS TRANSIT



EPOWER



ASGP



AMPHE|LITE



HEAVY|MATE



TERMINAL BLOCKS



MAX|M12



ADGC SERIES



EMP



A SERIES



MIL|5015 ASGTC



HVGTC SERIES



MIL|26482 ASCB



MIL|5015 ASVG



MIL|5015 AC



M8 & M12



MIL|5015 GT



MRC SERIES



FLEX



MIL|26482 PT&CMB



ASPRC SERIES



ASTP SERIES



HEATSHRINK



D-SUB EMI SHELL



RFM



BUSBAR



M12 PUSH-PULL



WIND|LOK



MIL-DTL-5015 REVERSE BAYONET: GT & ACA-B SERIES

Amphenol Industrial Operation (AIO-ATZ)

APPROVAL EN45545-2	YES
COMPATIBLE/COMPETITION PRODUCTS	CANNON CIR
CONTACT TYPE	SOLID
CONTACT WIRE GAUGE	AWG0-20/0,5-70MM ²
EMI OPTION	YES
HARDWARE COUPLING MECHANISM	REVERSE BAYONET
HARDWARE NR INSERT ARRANGEMENTS	292
IP RATING MATED	IP67-68
MATERIAL SHELL	AL OR AISI
MATING CYCLES	2000
MAX CURRENT RATING ACCORDING TO EN91684 (AT 20C)	245A
OPERATING TEMPERATURE	-55C TO +125C



MIL-DTL-5015 REVERSE BAYONET: ASGTC SERIES

Amphenol PCD Shenzhen (APCD)

APPROVAL EN45545-2	YES
COMPATIBLE/COMPETITION PRODUCTS	JAE
CONTACT TYPE	SOLID
CONTACT WIRE GAUGE	AWG0-20/0,5-70MM ²
EMI OPTION	YES
HARDWARE COUPLING MECHANISM	REVERSE BAYONET
HARDWARE NR INSERT ARRANGEMENTS	20
IP RATING MATED	IP67
MATERIAL SHELL	AL
MATING CYCLES	1500
MAX CURRENT RATING ACCORDING TO EN91684 (AT 20C)	125A
OPERATING TEMPERATURE	-55C TO +125C



MIL-DTL-5015 REVERSE BAYONET: ASGTC QUADRAX & GIGABIT

Amphenol PCD Shenzhen (APCD)

APPROVAL EN45545-2	YES
COMPATIBLE/COMPETITION PRODUCTS	NA
CONTACT TYPE	SOLID
CONTACT WIRE GAUGE	4-8PR X 0,5MM ²
EMI OPTION	YES
HARDWARE COUPLING MECHANISM	REVERSE BAYONET
HARDWARE NR INSERT ARRANGEMENTS	17
IP RATING MATED	IP67
MATERIAL SHELL	AL
MATING CYCLES	500
MAX CURRENT RATING ACCORDING TO EN91684 (AT 20C)	20A
OPERATING TEMPERATURE	-55C TO +125C



ASGTC QUADRAX



ASGTC QUADRAX GIGABIT MODULE



Catalog



Presentation



MIL-DTL-5015 REVERSE BAYONET : ASVG SERIES

Amphenol PCD Shenzhen (APCD)

APPROVAL EN45545-2	YES
COMPATIBLE/COMPETITION PRODUCTS	CANNON VBN
CONTACT TYPE	SOLID
CONTACT WIRE GAUGE	AWG12-20/0,5-2,5MM ²
EMI OPTION	YES
HARDWARE COUPLING MECHANISM	REVERSE BAYONET
HARDWARE NR INSERT ARRANGEMENTS	27
IP RATING MATED	IP67
MATERIAL SHELL	AL
MATING CYCLES	1000
MAX CURRENT RATING ACCORDING TO EN91684 (AT 20C)	125A
OPERATING TEMPERATURE	-55C TO +125C



Catalog



Presentation



MIL-DTL-5015 REVERSE BAYONET: ADGC SIZE 48

Amphenol Daeshin (ADS)

APPROVAL EN45545-2	YES
COMPATIBLE/COMPETITION PRODUCTS	CANNON CIR290
CONTACT TYPE	SOLID
CONTACT WIRE GAUGE	AWG4/0-95MM ²
EMI OPTION	NO
HARDWARE COUPLING MECHANISM	REVERSE BAYONET
HARDWARE NR INSERT ARRANGEMENTS	5
IP RATING MATED	IP67
MATERIAL SHELL	AL
MATING CYCLES	2000
MAX CURRENT RATING ACCORDING TO EN91684 (AT 20C)	450A
OPERATING TEMPERATURE	-55C TO +125C



Catalog



Presentation



MIL-DTL-5015 THREADED: AC & DS & MS SERIES

Amphenol Industrial Operation (AIO-ATZ) & Amphenol Daeshin (ADS)

APPROVAL EN45545-2	YES
COMPATIBLE/COMPETITION PRODUCTS	CANNON MS/CA-COM
CONTACT TYPE	SOLID
CONTACT WIRE GAUGE	AWG0-20/0,5-50MM ²
EMI OPTION	YES
HARDWARE COUPLING MECHANISM	THREADED
HARDWARE NR INSERT ARRANGEMENTS	130
IP RATING MATED	IP67
MATERIAL SHELL	AL
MATING CYCLES	500
MAX CURRENT RATING ACCORDING TO EN91684 (AT 20C)	245A
OPERATING TEMPERATURE	-55C TO +125C



Plug: 06



Inline: 01



Wall Mount: 01



Box Mount: 02



A	
AD	
AF	
E	
F	
R	
08:F	

NO REAR ACCESSORIES THREADS ON 02 BOX MOUNT RECEPTACLE



Catalog



Catalog



Presentation

MIL-DTL-26482 MINIATURE BAYONET: MS31XX & PT/CMB SERIES

Amphenol Industrial Operation (AIO-ATZ)

APPROVAL UL	YES
COMPATIBLE/COMPETITION PRODUCTS	CANNON KPT
CONTACT TYPE	SOLID
CONTACT WIRE GAUGE	AWG12-22/,25-2,5MM ²
EMI OPTION	YES
HARDWARE COUPLING MECHANISM	BAYONET
HARDWARE NR INSERT ARRANGEMENTS	71
IP RATING MATED	IP67
MATERIAL SHELL	FULL METAL
MATING CYCLES	500
MAX CURRENT RATING ACCORDING TO EN91684 (AT 20C)	41A
OPERATING TEMPERATURE	-55C TO +125C



Catalog



Presentation



MIL-DTL-26482 MINIATURE BAYONET: ASCB

Amphenol PCD Shenzhen (APCD)

APPROVAL UL	NO
COMPATIBLE/COMPETITION PRODUCTS	NA
CONTACT TYPE	SOLID
CONTACT WIRE GAUGE	AWG12-22/,25-2,5MM ²
EMI OPTION	YES
HARDWARE COUPLING MECHANISM	BAYONET
HARDWARE NR INSERT ARRANGEMENTS	3
IP RATING MATED	IP67
MATERIAL SHELL	FULL METAL
MATING CYCLES	500
MAX CURRENT RATING ACCORDING TO EN91684 (AT 20C)	41A
OPERATING TEMPERATURE	-55C TO +125C



Catalog



Presentation



MIL-DTL-38999 ACME THREADED: AMPHE|LITE SERIES

Amphenol Industrial Operation (AIO-ATZ)

APPROVAL UL	YES
COMPATIBLE/COMPETITOR SERIES	38999
CONTACT TYPE	SOLID
CONTACT WIRE GAUGE	AWG12-22/,25-2,5MM ²
EMI OPTION	YES
HARDWARE COUPLING MECHANISM	ACME THREADED
HARDWARE NR INSERT ARRANGEMENTS	39
IP RATING MATED	IP67
MATERIAL SHELL	PLASTIC OR METAL
MATING CYCLES	500
MAX CURRENT RATING ACCORDING TO EN91684 (AT 20C)	41
OPERATING TEMPERATURE	-55C TO +125C



Catalog



Catalog



Presentation



WIND | LOK

Amphenol Industrial Operation (AIO-ATZ)

APPROVAL EN45545-2	NO
COMPATIBLE/COMPETITION PRODUCTS	NA
CONTACT TYPE	SOLID
CONTACT WIRE GAUGE	120-400MM ²
EMI OPTION	YES
HARDWARE COUPLING MECHANISM	REVERSE BAYONET
HARDWARE NR INSERT ARRANGEMENTS	2
IP RATING MATED	IP67
MATERIAL SHELL	AL OR AISI
MATING CYCLES	1000
MAX CURRENT RATING ACCORDING TO EN91684 (AT 20C)	1000A
OPERATING TEMPERATURE	-55C TO +125C



Catalog



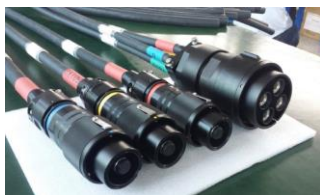
Presentation



REVERSE BAYONET: HVGTC

Amphenol PCD Shenzhen (APCD)

APPROVAL EN45545-2	YES
COMPATTIBLE/COMPETITION PRODUCTS	NA
CONTACT TYPE	SOLID
CONTACT WIRE GAUGE	95-240MM ²
EMI OPTION	YES
HARDWARE COUPLING MECHANISM	REVERSE BAYONET
HARDWARE NR INSERT ARRANGEMENTS	8
IP RATING MATED	IP67
MATERIAL SHELL	AL
MATING CYCLES	1000
MAX CURRENT RATING ACCORDING TO EN91684 (AT 20C)	1000A
OPERATING TEMPERATURE	-55C TO +125C



Catalog



Presentation



HEAVY|MATE® C146

Amphenol Tuchel Electronics Industrial (ATEI)

APPROVAL EN45545-2	YES
COMPATIBLE/COMPETITOR SERIES	HARTIN HAN
CONTACT TYPE	SOLID AND S&F
CONTACT WIRE GAUGE	26-1/0 / 0.14-705MM2
EMI OPTION	YES
HARDWARE COUPLING MECHANISM	BOLT/LEVER
HARDWARE NR INSERT ARRANGEMENTS	250
IP RATING MATED	IP67/68
MATERIAL SHELL	METAL&PLASTIC
MATING CYCLES	500
MAX CURRENT RATING ACCORDING TO EN91684 (AT 20C)	UP TO 300A
OPERATING TEMPERATURE	-40°C TO +125°C



Catalog



Presentation

HEAVY|MATE® C146 ETHERNET MODULE

Amphenol PCD Shenzhen (APCD)

APPROVAL EN45545-2	YES
COMPATIBLE/COMPETITOR SERIES	
CONTACT TYPE	SOLID
CONTACT WIRE GAUGE	26-14 / 0.14-2.5MM2
EMI OPTION	YES
HARDWARE COUPLING MECHANISM	BOLT/LEVER
HARDWARE NR INSERT ARRANGEMENTS	1,2,3,4
IP RATING MATED	IP68/69K
MATERIAL SHELL	METAL
MATING CYCLES	1.500
MAX CURRENT RATING ACCORDING TO EN91684 (AT 20C)	250A&400A&700A
OPERATING TEMPERATURE	-40°C TO +125°C



Catalog



Presentation



HEAVY|MATE® C146 HIGH POWER

Amphenol PCD Shenzhen (APCD)

APPROVAL EN45545-2	YES
COMPATIBLE/COMPETITOR SERIES	
CONTACT TYPE	SOLID
CONTACT WIRE GAUGE	16-240MM2
EMI OPTION	YES
HARDWARE COUPLING MECHANISM	BOLT
HARDWARE NR INSERT ARRANGEMENTS	1,2,3,4
IP RATING MATED	IP68/69K
MATERIAL SHELL	METAL
MATING CYCLES	1.500
MAX CURRENT RATING ACCORDING TO EN91684 (AT 20C)	250A&400A&700A
OPERATING TEMPERATURE	-40°C TO +125°C



Catalog



Presentation



EMP

Amphenol PCD Shenzhen (APCD)

APPROVAL EN45545-2	YES
COMPATIBLE/COMPETITOR SERIES	
CONTACT TYPE	SOLID
CONTACT WIRE GAUGE	25-240MM2
EMI OPTION	YES
HARDWARE COUPLING MECHANISM	BOLT
HARDWARE NR INSERT ARRANGEMENTS	3, 4, 6
IP RATING MATED	IP67
MATERIAL SHELL	METAL
MATING CYCLES	500
MAX CURRENT RATING ACCORDING TO EN91684 (AT 20C)	700A
OPERATING TEMPERATURE	-55°C TO +125°C



Catalog



Presentation



M8 & M12

Amphenol LTW Technology Co. (LTW) & Amphenol Conec (ACON)



M12 PUSH-PULL

Amphenol PCD Shenzhen (APCD)



M12-MAX

Amphenol Industrial Operation (AIO-ATZ)

APPROVAL UL	YES
COMPATIBLE/COMPETITOR SERIES	M12
CONTACT TYPE	SOLID & S&F
CONTACT WIRE GAUGE	AWG16-22/,25-1,5MM ²
EMI OPTION	YES
HARDWARE COUPLING MECHANISM	M12 THREAD
HARDWARE NR INSERT ARRANGEMENTS	88
IP RATING MATED	IP68
MATERIAL SHELL	PLASTIC, METAL
MATING CYCLES	500
MAX CURRENT RATING ACCORDING TO EN91684 (AT 20C)	4A
OPERATING TEMPERATURE	-55C TO +125C



Catalog



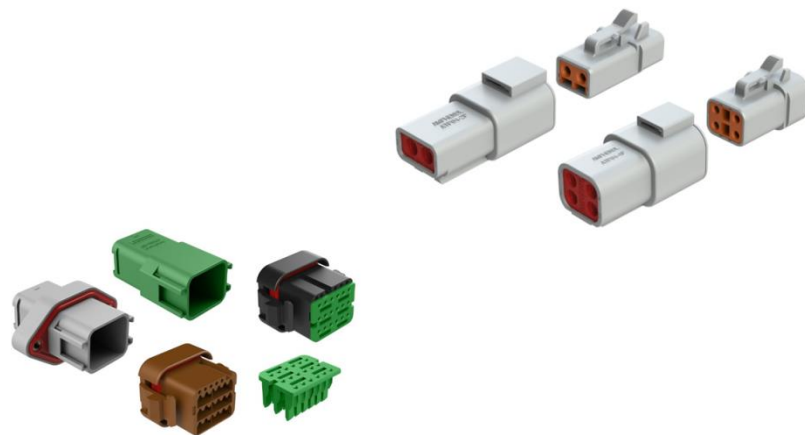
Presentation



AT & ATP & ATV SERIES

Amphenol Sine Systems Corporation (SINE)

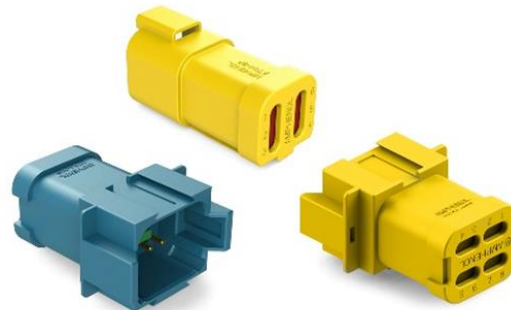
APPROVAL UL	YES
COMPATIBLE/COMPETITOR SERIES	DT-DTM-DTP
CONTACT TYPE	SOLID & S&F
CONTACT WIRE GAUGE	AWG12-20/0,5-2,5MM ²
EMI OPTION	NO
HARDWARE COUPLING MECHANISM	PUSH-PULL
HARDWARE NR INSERT ARRANGEMENTS	2,3,4,6,8,12,13,18
IP RATING MATED	IP67
MATERIAL SHELL	PLASTIC
MATING CYCLES	100
MAX CURRENT RATING ACCORDING TO EN91684 (AT 20C)	25A
OPERATING TEMPERATURE	-40°C TO +125°C



AT SERIES CAN & LED

Amphenol Sine Systems Corporation (SINE)

APPROVAL UL	YES
COMPATIBLE/COMPETITOR SERIES	DT-DTM-DTP
CONTACT TYPE	SOLID & S&F
CONTACT WIRE GAUGE	AWG12-20/0,5-2,5MM ²
EMI OPTION	NO
HARDWARE COUPLING MECHANISM	PUSH-PULL
HARDWARE NR INSERT ARRANGEMENTS	2,4,6,8
IP RATING MATED	IP67
MATERIAL SHELL	PLASTIC
MATING CYCLES	100
MAX CURRENT RATING ACCORDING TO EN91684 (AT 20C)	25A
OPERATING TEMPERATURE	-40°C TO +125°C



Catalog



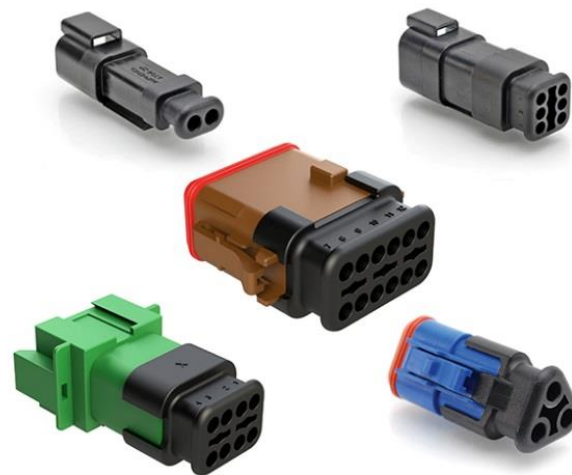
Presentation



AT SERIES SR

Amphenol Sine Systems Corporation (SINE)

APPROVAL UL	YES
COMPATIBLE/COMPETITOR SERIES	DT-DTM-DTP
CONTACT TYPE	SOLID & S&F
CONTACT WIRE GAUGE	AWG12-20/0,5-2,5MM ²
EMI OPTION	NO
HARDWARE COUPLING MECHANISM	PUSH-PULL
HARDWARE NR INSERT ARRANGEMENTS	2,3,4,6,8,12,13,18
IP RATING MATED	IP67
MATERIAL SHELL	PLASTIC
MATING CYCLES	100
MAX CURRENT RATING ACCORDING TO EN91684 (AT 20C)	25A
OPERATING TEMPERATURE	-40°C TO +125°C



Catalog



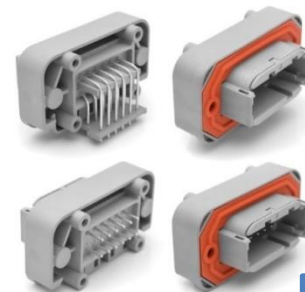
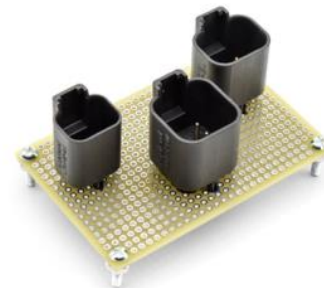
Presentation



AT SERIES PANEL | MATE & BOARD | LOK

Amphenol Sine Systems Corporation (SINE)

APPROVAL UL	NA	NA
COMPATIBLE/COMPETITOR SERIES	DT	DT
CONTACT TYPE	CRIMP, PCB	PCB
CONTACT WIRE GAUGE	AWG12-18/,75-2,5MM ²	AWG16-18/,75-1,5MM ²
EMI OPTION	NO	NO
HARDWARE COUPLING MECHANISM	PUSH-PULL	PUSH-PULL </td
HARDWARE NR INSERT ARRANGEMENTS	2,3,4,6,8,12	2,3,4,6,8,12,13
IP RATING MATED	IP67	IP67
MATERIAL SHELL	PLASTIC	PLASTIC
MATING CYCLES	100	100
MAX CURRENT RATING ACCORDING TO EN91684 (AT 20C)	25A	13A
OPERATING TEMPERATURE	-40°C TO +125°C	-40°C TO +125°C



Catalog



Presentation

TRU|LOC®

Amphenol Industrial Operation (AIO-ATZ)

APPROVAL UL	YES
COMPATIBLE/COMPETITOR SERIES	
CONTACT TYPE	S&F
CONTACT WIRE GAUGE	AWG12-20/0,5-2,5MM ²
EMI OPTION	NO
HARDWARE COUPLING MECHANISM	LOCKING LATCH
HARDWARE NR INSERT ARRANGEMENTS	2,4,6
IP RATING MATED	IP67
MATERIAL SHELL	PLASTIC
MATING CYCLES	100
MAX CURRENT RATING ACCORDING TO EN91684 (AT 20C)	22A
OPERATING TEMPERATURE	-40°C TO +125°C



Catalog



Presentation



E-POWER

Amphenol Industrial Operations (AIO-ATZ)

NUMBER OF POLES MAX	2-3
CONTACT (RADSOK®) SIZE	8,0-11,1MM
CONTACT WIRE SIZE	35-95MM ²
HARDWARE IP2X ON RECEPTACLE SIDE	YES
HARDWARE IP69K IN MATED CONDITION	YES
HARDWARE WITH CPA	YES
HARDWARE WITH EMI OPTION	YES
HARDWARE WITH HVIL CONTACTS	YES
HARDWARE WITH SECONDARY LOCK	SCREW
OPERATING CURRENT AT 80C	400A
OPERATING TEMPERATURE RATING	-40/+125C
OPERATING VOLTAGE	1000V



Catalog

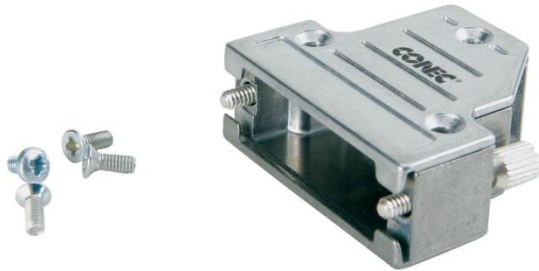
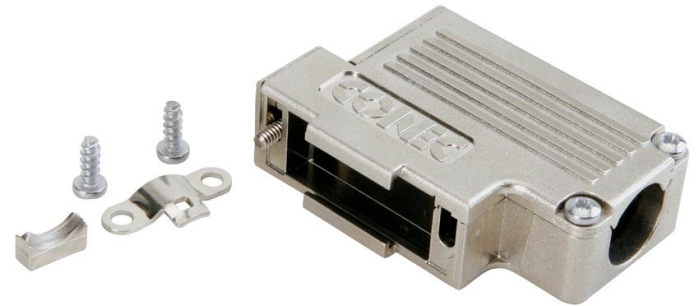


Presentation



D-SUB AND EMI HOOD AND HOUSING

Amphenol Conec (ACON)



Catalog



Presentation



D-SUB WATERPROOF

Amphenol LTW Technology Co. (LTW) & Amphenol Conec (ACON)

APPROVAL UL	YES
COMPATIBLE/COMPETITOR SERIES	
CONTACT TYPE	S&F PT SOLID
CONTACT WIRE GAUGE	AWG16-22/,25-1,5MM ²
EMI OPTION	YES
HARDWARE COUPLING MECHANISM	SCREWS
HARDWARE NR INSERT ARRANGEMENTS	8
IP RATING MATED	IP68
MATERIAL SHELL	PLASTIC
MATING CYCLES	1.000
MAX CURRENT RATING ACCORDING TO EN91684 (AT 20C)	30A
OPERATING TEMPERATURE	-40C TO +105C



USB WATERPROOF

Amphenol LTW Technology Co. (LTW) & Amphenol Conec (ACON)

APPROVAL UL	YES
COMPATIBLE/COMPETITOR SERIES	
CONTACT TYPE	USB
CONTACT WIRE GAUGE	USB
EMI OPTION	YES
HARDWARE COUPLING MECHANISM	REVERSE BAYONET
HARDWARE NR INSERT ARRANGEMENTS	6
IP RATING MATED	IP68
MATERIAL SHELL	PLASTIC
MATING CYCLES	1.000
MAX CURRENT RATING ACCORDING TO EN91684 (AT 20C)	20A
OPERATING TEMPERATURE	-40C TO +105C



FIBER OPTICS WATERPROOF

Amphenol LTW Technology Co. (LTW) & Amphenol Conec (ACON)

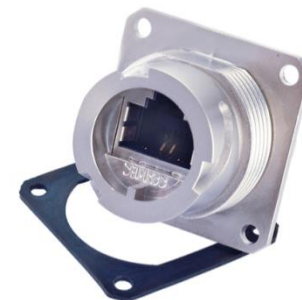
APPROVAL UL	YES
COMPATIBLE/COMPETITOR SERIES	NA
CONTACT TYPE	FIBER LC
CONTACT WIRE GAUGE	FIBER LC
EMI OPTION	NO
HARDWARE COUPLING MECHANISM	REVERSE BAYONET
HARDWARE NR INSERT ARRANGEMENTS	1
IP RATING MATED	IP68
MATERIAL SHELL	PLASTIC
MATING CYCLES	1.000
MAX CURRENT RATING ACCORDING TO EN91684 (AT 20C)	NA
OPERATING TEMPERATURE	-40C TO +105C



RJ-45 WATERPROOF

Amphenol LTW Technology Co. (LTW) & Amphenol Conec (ACON)

APPROVAL UL	YES
COMPATIBLE/COMPETITOR SERIES	
CONTACT TYPE	RJ45
CONTACT WIRE GAUGE	RJ45
EMI OPTION	YES
HARDWARE COUPLING MECHANISM	REVERSE BAYONET
HARDWARE NR INSERT ARRANGEMENTS	1
IP RATING MATED	IP68
MATERIAL SHELL	PLASTIC
MATING CYCLES	1.000
MAX CURRENT RATING ACCORDING TO EN91684 (AT 20C)	7A
OPERATING TEMPERATURE	-40C TO +105C



ASTP

Amphenol PCD Shenzhen (APCD)

APPROVAL EN45545-2	YES
COMPATIBLE/COMPETITOR SERIES	
CONTACT TYPE	SOLID
CONTACT WIRE GAUGE	0.3-4MM2
EMI OPTION	NO
HARDWARE COUPLING MECHANISM	LEVER
HARDWARE NR INSERT ARRANGEMENTS	34, 44, 50
IP RATING MATED	NO
MATERIAL SHELL	METAL
MATING CYCLES	500
MAX CURRENT RATING ACCORDING TO EN91684 (AT 20C)	23A
OPERATING TEMPERATURE	-55°C TO +125°C



Catalog



Presentation



ASPRC

Amphenol PCD Shenzhen (APCD)

APPROVAL EN45545-2	NA
COMPATIBLE/COMPETITOR SERIES	
CONTACT TYPE	SOLID
CONTACT WIRE GAUGE	0.3-0.75MM2
EMI OPTION	NO
HARDWARE COUPLING MECHANISM	PUSH-PULL
HARDWARE NR INSERT ARRANGEMENTS	52
IP RATING MATED	NO
MATERIAL SHELL	PLASTIC
MATING CYCLES	500
MAX CURRENT RATING ACCORDING TO EN91684 (AT 20C)	5A
OPERATING TEMPERATURE	-55°C TO +125°C



RFM – RACH FLOATING MODULAR

Amphenol PCD Shenzhen (APCD)

APPROVAL EN45545-2	NA
COMPATIBLE/COMPETITOR SERIES	
CONTACT TYPE	SOLID
CONTACT WIRE GAUGE	0.3-10MM2
EMI OPTION	NO
HARDWARE COUPLING MECHANISM	BOARD TO BOARD
HARDWARE NR INSERT ARRANGEMENTS	feb-70
IP RATING MATED	NO
MATERIAL SHELL	NA
MATING CYCLES	5.000
MAX CURRENT RATING ACCORDING TO EN91684 (AT 20C)	60A
OPERATING TEMPERATURE	-55°C TO +125°C



Catalog



Presentation



ASGP GROUND POWER

Amphenol PCD Shenzhen (APCD)



Catalog



Presentation

MRC

Amphenol PCD Shenzhen (APCD)

APPROVAL EN45545-2	NA
COMPATIBLE/COMPETITOR SERIES	
CONTACT TYPE	SOLID
CONTACT WIRE GAUGE	0.3-10MM2
EMI OPTION	NO
HARDWARE COUPLING MECHANISM	BOLT
HARDWARE NR INSERT ARRANGEMENTS	feb-70
IP RATING MATED	NO
MATERIAL SHELL	NA
MATING CYCLES	500
MAX CURRENT RATING ACCORDING TO EN91684 (AT 20C)	60A
OPERATING TEMPERATURE	-45°C TO +125°C



Catalog



Presentation



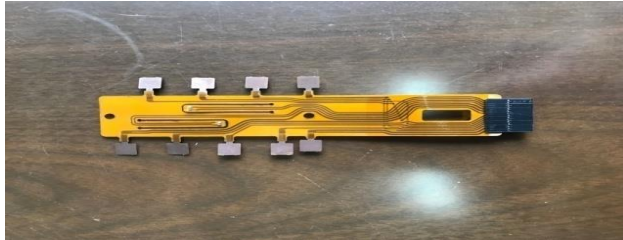
AMPHE | HST (HEATSHRINK TUBES)

Amphenol Industrial Operation (AIO-ATZ)



FLEXIBLE CIRCUITS & ASSEMBLIES

Guangzhou Amphenol Sincere Flex Co. Ltd. (GASF)



Product Application – HEV & Better



PCB+Cable design Solution



FPC Solution



Catalog



Presentation

BUSBAR: FLEXIBLE & RIGID

Amphenol Guangzhou Electronics Co. Ltd. (GEC)



Catalog



Presentation



A 3D rendered image of two white robotic hands, each holding a different type of industrial electrical connector. The hands are positioned on either side of the central text, with their fingers wrapped around the connectors. The background is a dark blue gradient with faint, out-of-focus images of various connectors.

YOUR PARTNER FOR INTERCONNECT SOLUTIONS