



# Amphenol

## Industrial

**RADLOK® SERIES**

# RADLOK® DESCRIPTION

## DESCRIPTION AND CHARACTERISTICS

- QUICK LOCKING FEATURE TO REPLACE A CABLE LUG
- USE WITH RADLOK™ MATING PIN FOR LOCKING
- OVERMOLDED PLASTIC PROTECTION CAP WITH INTEGRATED LOCKING MECHANISM
- COPPER FUSIONLUG WITH INTEGRATED RADSOK R4
- HIGH CURRENT RATINGS AND MEETS ROHS STANDARDS
- AVAILABLE PRE-ASSEMBLED WITH CABLE
- AVAILABLE ALSO WITH EXPOSED CRIMP BARREL FOR CUSTOMER TERMINATION
- CURRENT RATING 70AMP UP TO 500AMP AT 80C (800AMP AT 20C)
- VOLTAGE RATING 1000V
- AVAILABLE IN DIFFERENT COLORS (ORANGE, RED, AND BLACK)
- ROHS AND REACH COMPLIANT
- IP40 IN MATED CONDITION
- PANEL FEED-THRU IS IP67-IP6K9K TOWARDS INSIDE

## AVAIALBLE SIZES

- 3.6MM, FOR 10SQMM CABLE
- 5,7MM, FOR 16SQMM – UP TO 25SQMM CABLE
- 8.0MM, FOR 35SQMM – UP TO 50SQMM CABLE
- 10,0MM, FOR 50SQMM – UP TO 95SQMM CABLE
- 12,00MM, FOR 95SQMM - UP TO 120SQMM CABLE
- 14,00MM, FOR 120SQMM - UP TO 150SQMM CABLE

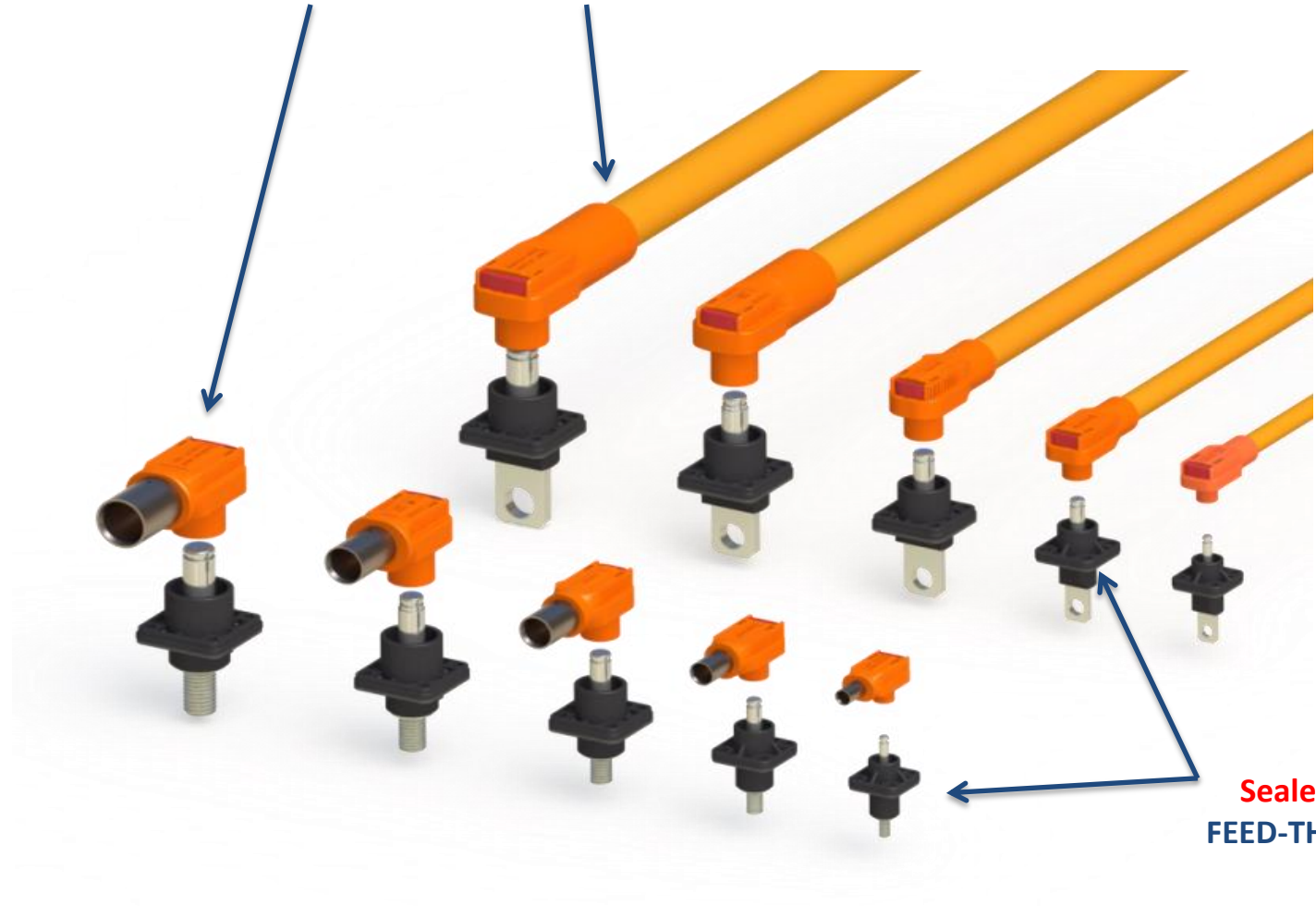


# RADLOK® OVERVIEW

**SECONDARY**  
locking



Field **CRIMPABLE** or **OVERMOLDED**



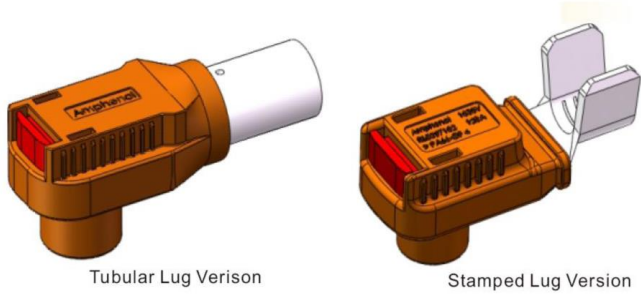
**QUICK**  
Power Connect

**70A to 500A**  
Operating Current

**RADSOK®**  
contact technology

**Sealed**  
**FEED-THRU**

# RADLOK® HARDWARE OPTIONS

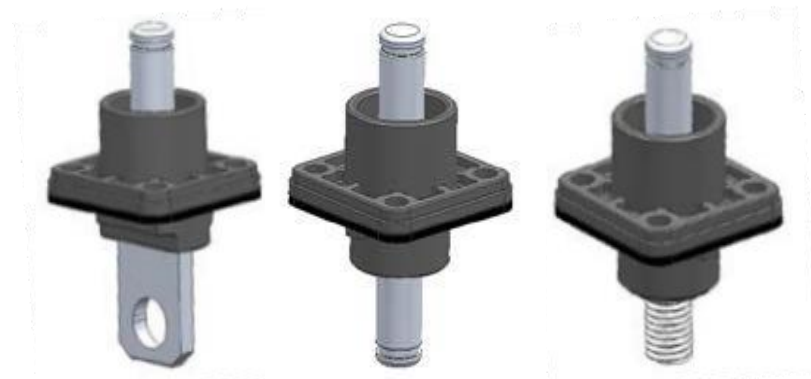


FIELD INSTALLABLE  
(IP40 IN MATED CONDITION)



PRE ASSEMBLED

SEALED FEED-THRU  
(IP67-IP6K9K TOWARDS INSIDE PANEL)



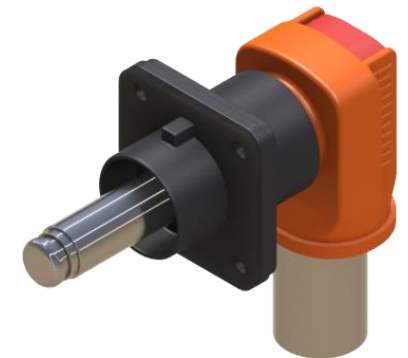
FLAT BUSBAR  
HOLE

RADLOK PIN  
DOUBLE CONNECT

THREADED BUSBAR  
METRIC



BUSBAR PIN METRIC



MATED PAIR EXAMPLE  
(IP 40 IN MATED CONDITION)

# RADLOK® COLOUR CODING



BLACK COLOUR

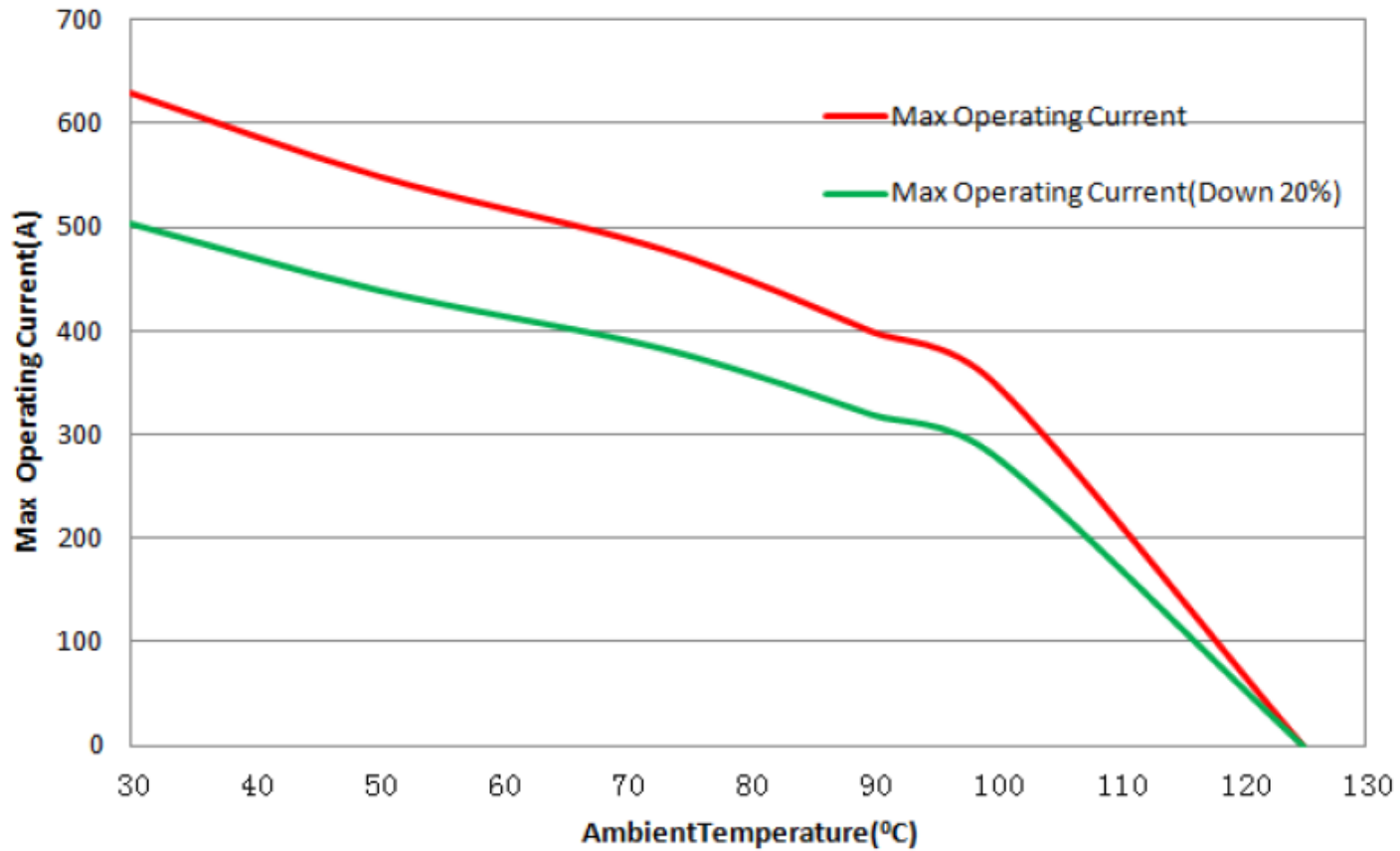


RED COLOUR



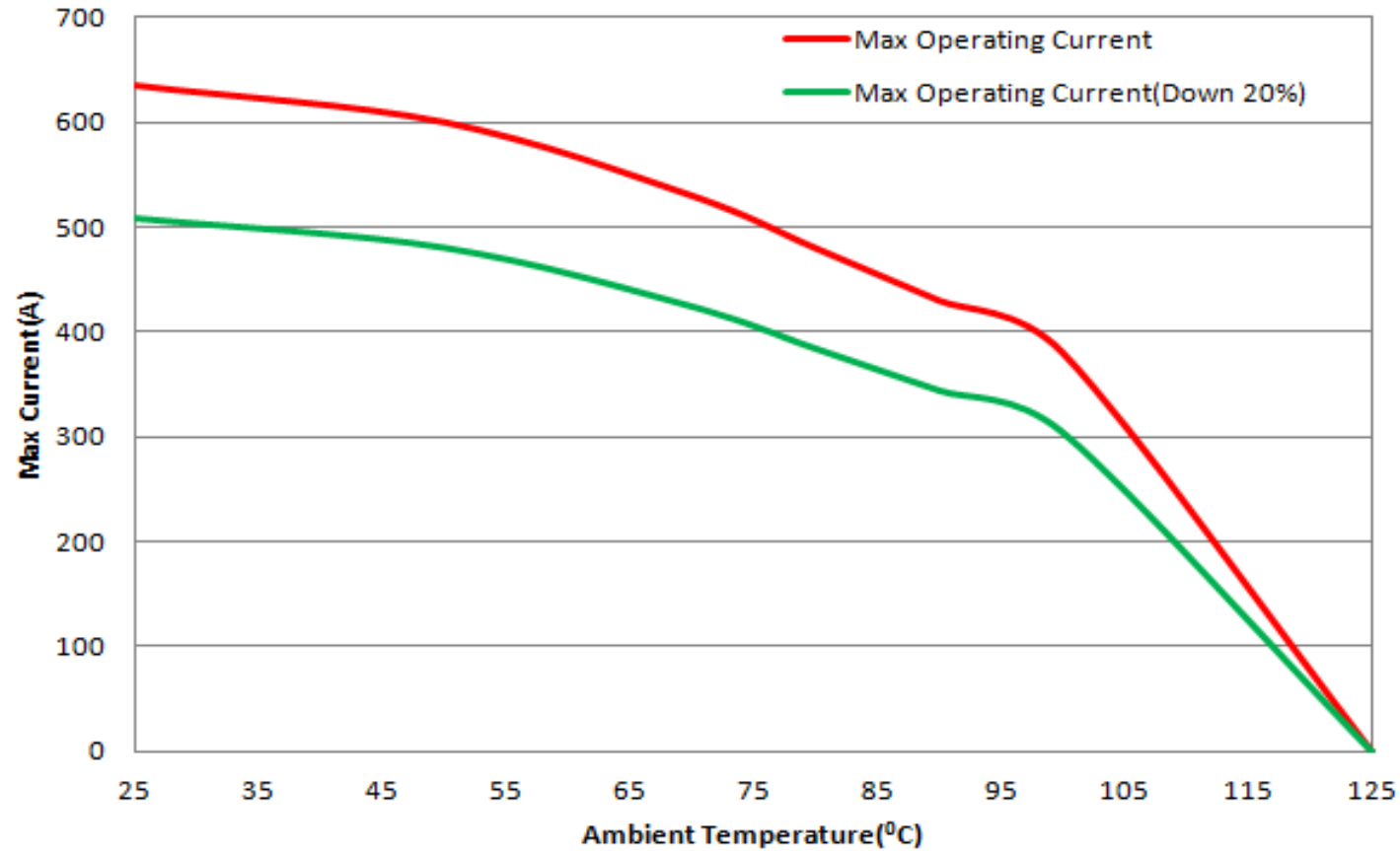
ORANGE COLOUR

# RADLOK® 14MM DE-RATING



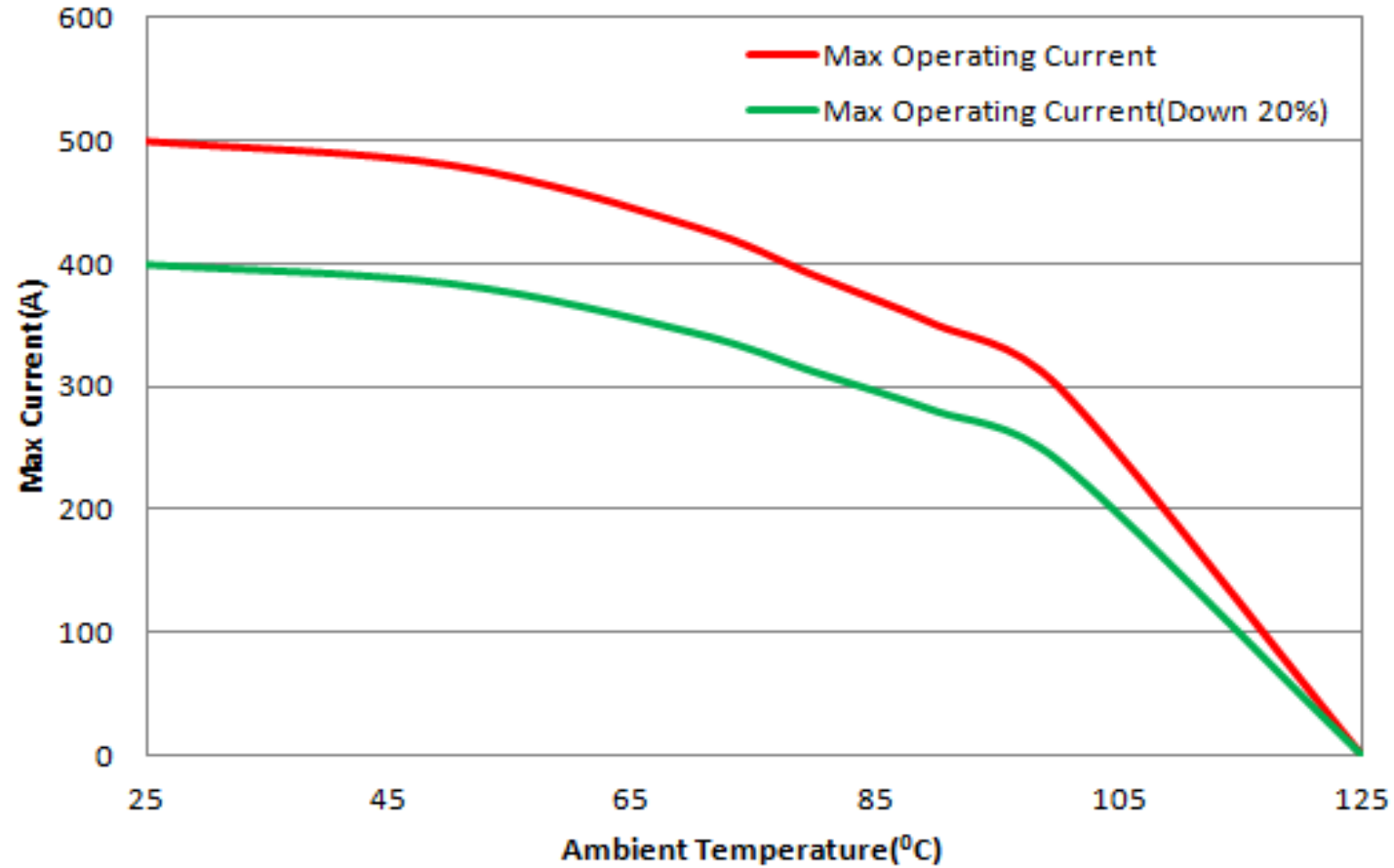
14,0MM RADLOK WITH 150MM<sup>2</sup> CABLE 1MT: RL01401-150-1000

# RADLOK® 12MM DE-RATING



12,0MM RADLOK WITH 120MM<sup>2</sup> CABLE 1MT: RL01201-120-1000

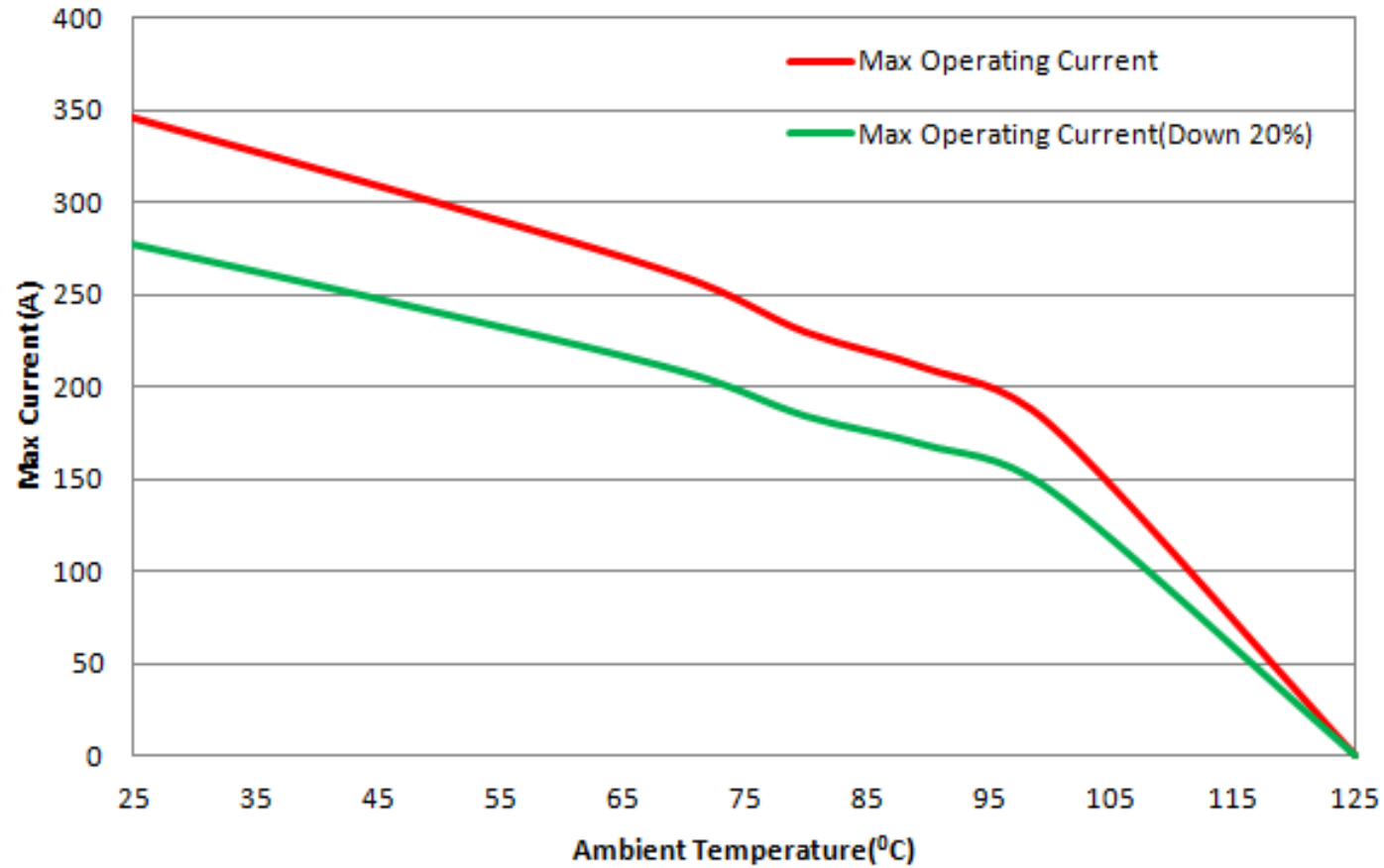
# RADLOK® 10MM DE-RATING



10,0MM RADLOK WITH 95MM<sup>2</sup> CABLE 1MT: RL01001-95-1000

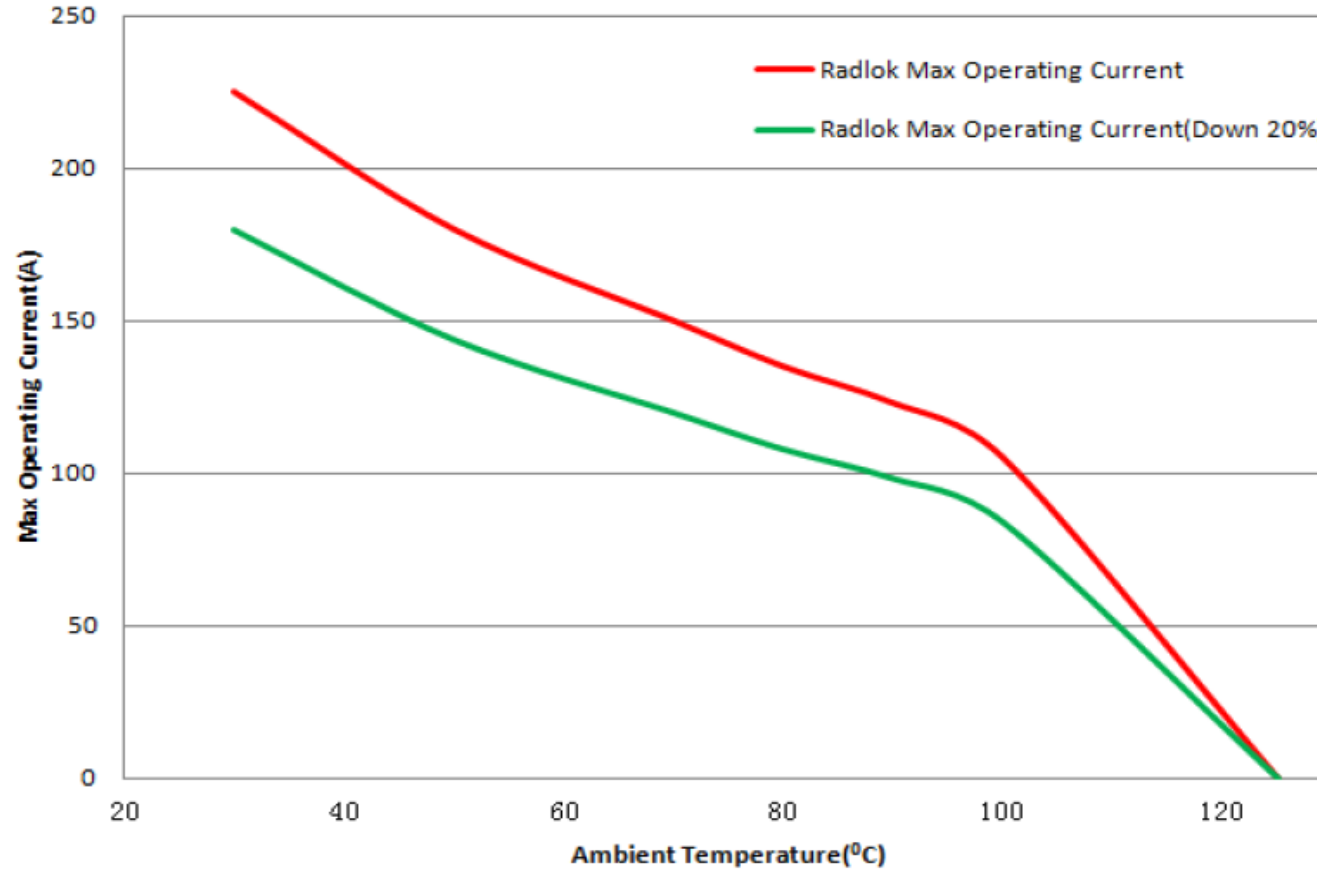


# RADLOK® 8,0MM DE-RATING



8,0MM RADLOK WITH 50MM<sup>2</sup> CABLE 1MT: RL0801-50-1000

# RADLOK® 5,7MM DE-RATING



5,7MM RADLOK WITH 25MM<sup>2</sup> CABLE 1MT: RL0571-25-1000

# RADLOK® ORDERING CODE - PLUG

<b>1-PRODUCT SERIES</b>	<b>2-SHELL TYPE</b>	<b>3-SIZE</b>	<b>4-LUG STYLE</b>	<b>5-CABLE SIZE</b>	<b>6-COLOUR</b>
RL	0	057	2	16	BK

**1-PRODUCT SERIES**

RL      RAD|LOK

**2-SHELL TYPE**

0      RIGHT ANGLE PLUG

**3-SIZE**

036      3,6MM RADSOK® 80A AT 85C WITH 30C T-RISE/120A AT 25C ACCORDING IEC61984  
 057      5,7MM RADSOK® 120A AT 85C WITH 30C T-RISE/200A AT 25C ACCORDING IEC61984  
 080      8MM RADSOK® 200A AT 85C WITH 30C T-RISE/300A AT 25C ACCORDING IEC61984  
 100      10MM RADSOK® 350A AT 85C WITH 30C T-RISE/450A AT 25C ACCORDING IEC61984  
 120      12MM RADSOK® 400A AT 85C WITH 30C T-RISE/600A AT 25C ACCORDING IEC61984  
 140      14MM RADSOK® 450A AT 85C WITH 30C T-RISE/650A AT 25C ACCORDING IEC61984

**4-LUG STYLE**

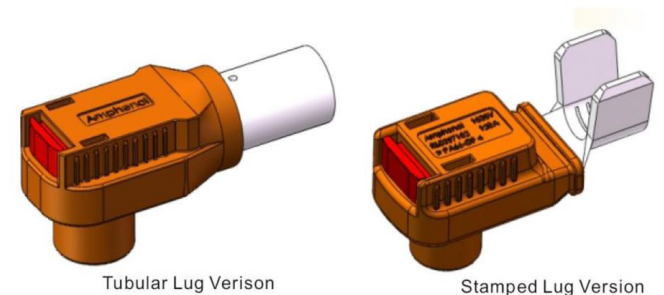
2      TUBULAR INDUSTRIAL LUG FOR HEX/4-IDENT CRIMP (STANDARD)  
 3      STAMPED LUG FOR B-CRIMP

**5-CABLE SIZE**

10      10MM<sup>2</sup> CABLE  
 16      16MM<sup>2</sup> CABLE  
 25      25MM<sup>2</sup> CABLE  
 35      35MM<sup>2</sup> CABLE  
 50      50MM<sup>2</sup> CABLE  
 70      70MM<sup>2</sup> CABLE  
 95      95MM<sup>2</sup> CABLE  
 120      120MM<sup>2</sup> CABLE  
 150      150MM<sup>2</sup> CABLE

**6-COLOUR**

BLANK      ORANGE  
 BK      BLACK  
 RE      RED



# RADLOK® ORDERING CODE – FEED-THRU RECEPTACLE AND BUSBAR PIN

<b>1-PRODUCT SERIES</b> RL	<b>2-SHELL TYPE</b> 9	<b>3-SIZE</b> 057	<b>4-TERMINATION</b> 201	<b>5-SHELL SELECTION</b> F1	<b>6-COLOUR</b> OR
-------------------------------	--------------------------	----------------------	-----------------------------	--------------------------------	-----------------------

**1-PRODUCT SERIES**  
RL            RAD|LOK

**2-SHELL TYPE**  
9            FEED-TRU PANEL RECEPTACLE OR BUSBAR PIN

**3-SIZE**

036	3,6MM RADSOK® 80A AT 85C WITH 30C T-RISE/120A AT 25C ACCORDING IEC61984
057	5,7MM RADSOK® 120A AT 85C WITH 30C T-RISE/200A AT 25C ACCORDING IEC61984
080	8MM RADSOK® 200A AT 85C WITH 30C T-RISE/300A AT 25C ACCORDING IEC61984
100	10MM RADSOK® 350A AT 85C WITH 30C T-RISE/450A AT 25C ACCORDING IEC61984
120	12MM RADSOK® 400A AT 85C WITH 30C T-RISE/600A AT 25C ACCORDING IEC61984
140	14MM RADSOK® 450A AT 85C WITH 30C T-RISE/650A AT 25C ACCORDING IEC61984

**4-TERMINATION**

101	THREADED BUSBAR (ONLY OPTION FOR BB PIN)
201	FLAT BUSBAR WITH HOLE
301	RADLOK PIN FOR DOUBLE QUICK CONNECTION

**5-SHELL SELECTION**

F1	FEED-THRU PANEL RECEPTACLE
OMIT	LOOSE BUSBAR PIN WITHOUT PLAST FLANGE HOUSING

**6-COLOUR**

BLANK	BLACK
OR	ORANGE
RE	RED

