

# AMPHENOL INDUSTRIAL PRODUCTS GROUP

## Heavy Equipment field applications

Diego Fossati

[diego.fossati@amphenol.de](mailto:diego.fossati@amphenol.de)



## AGRI - TRACTORS



# AGRI - TRACTOR – RADSOK, DURAMATE, ISOBUS, AT, TRU-LOK



**ISOBUS**



**ECOMATE**



**AT SERIES**

**J1939 ATC/AHD**



**TRULOC**



**ACTIVE PIN LOCK**



**RADLOK**



**DURAMATE**

## AGRI - CABIN – DISPLAYS, GPS, ISOBUS INTERFACE, JOYSTICKS



## AGRI - DISPLAYS, GPS, ISOBUS INTERFACES



# AGRI - DISPLAYS, GPS, ISOBUS INTERFACES



**MIL 5015/26482**



**ECOMATE**



**X-LOCK**

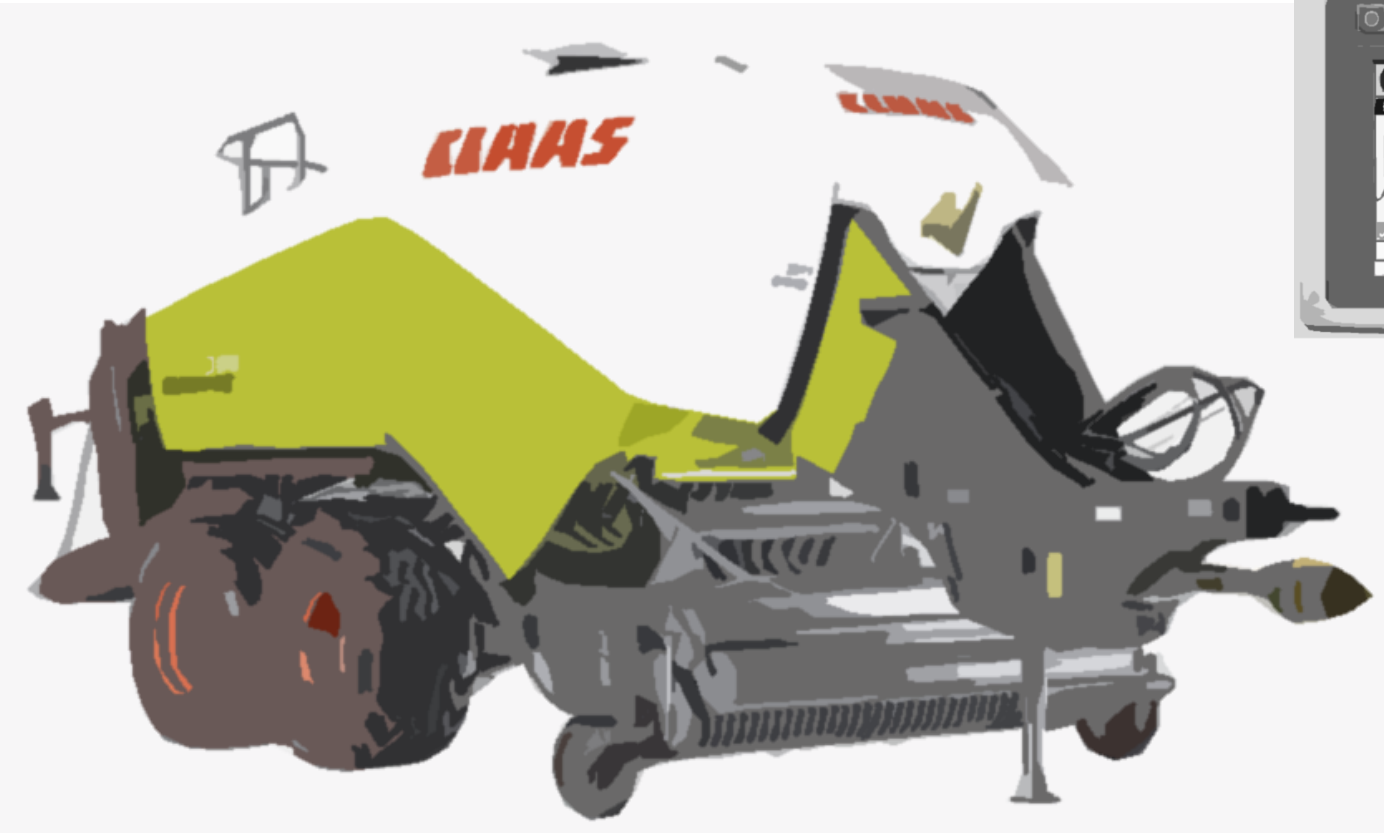


**USB**

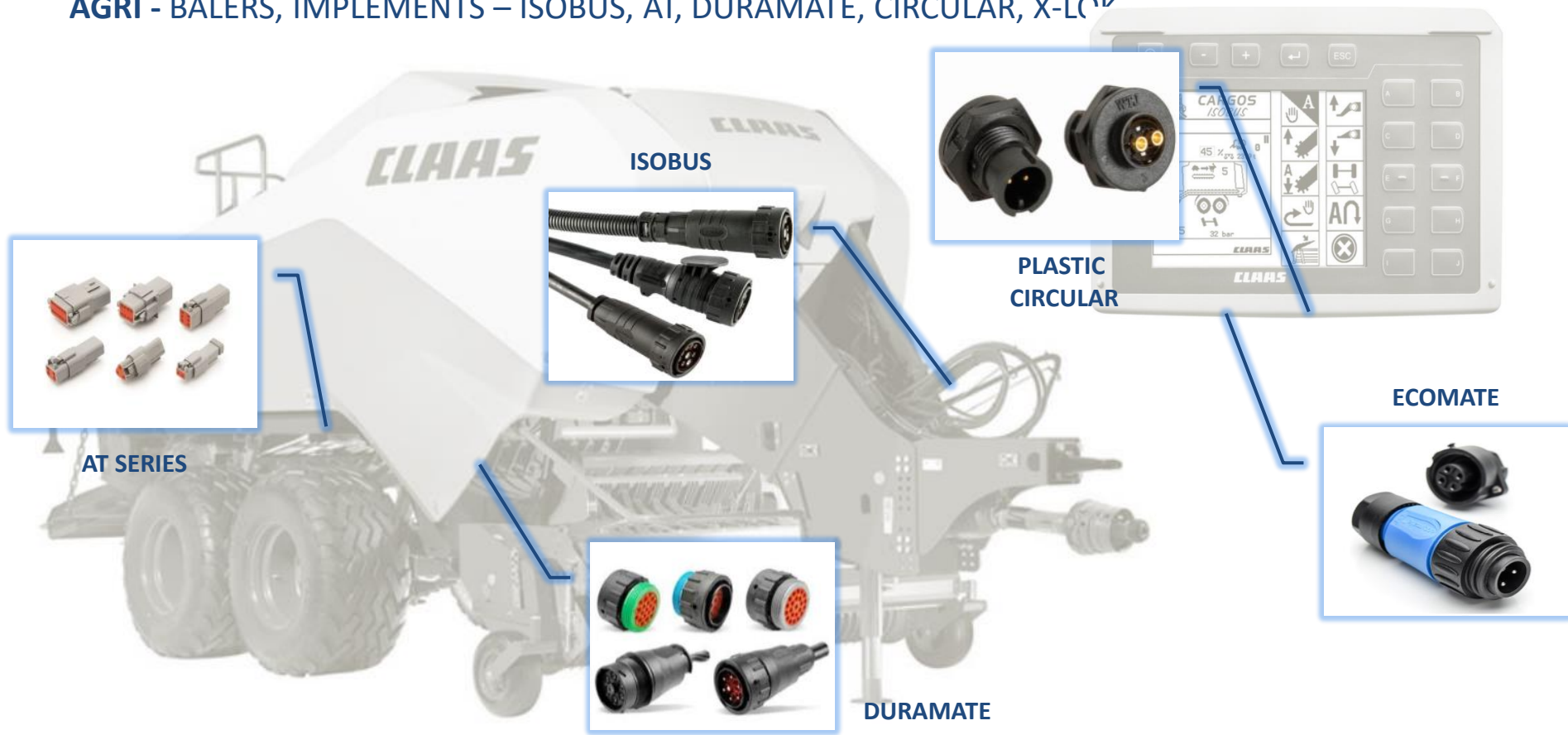


**RF-SMA**

## AGRI - BALERS, IMPLEMENTS



# AGRI - BALERS, IMPLEMENTS – ISOBUS, AT, DURAMATE, CIRCULAR, X-LOCK

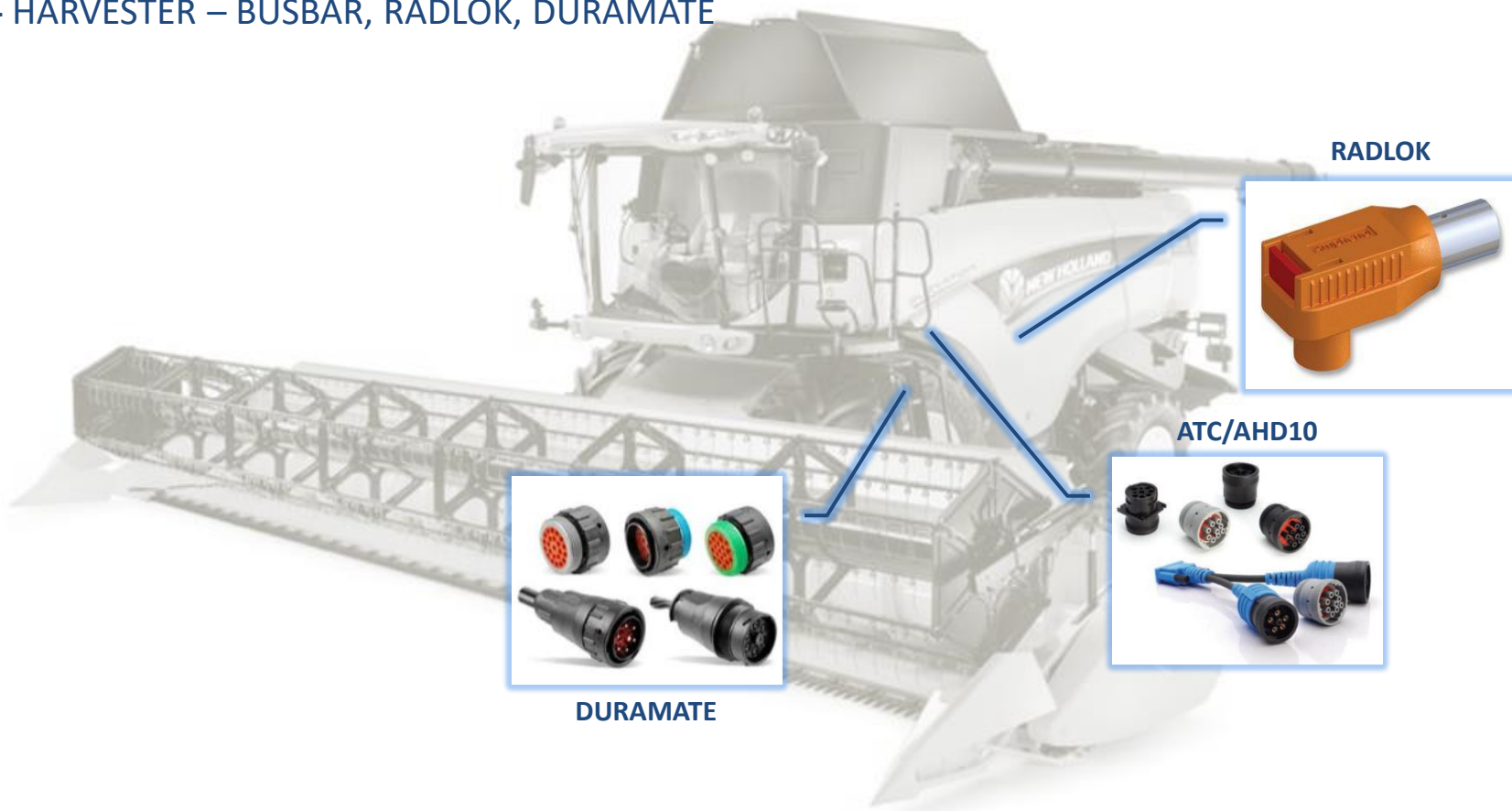




## AGRI - HARVESTER



# AGRI - HARVESTER – BUSBAR, RADLOK, DURAMATE



**RADLOK**



**ATC/AHD10**



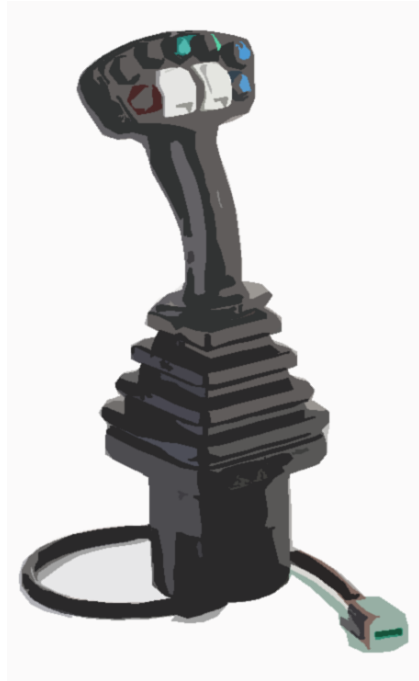
**DURAMATE**



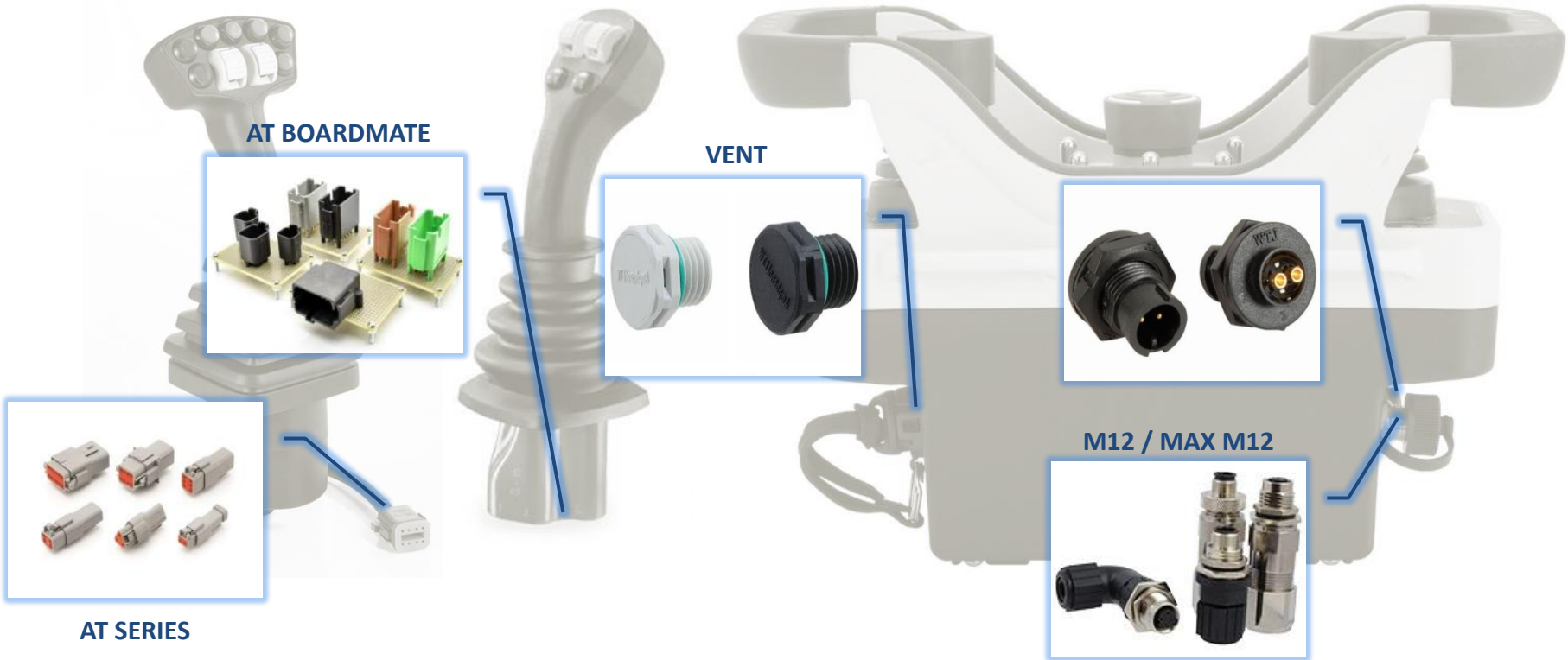
## CONSTRUCTION - CABIN



## CONSTRUCTION - JOYSTICKS AND REMOTES FOR HYDRAULIC DRIVES



# CONSTRUCTION - JOYSTICKS AND REMOTES FOR HYDRAULIC DRIVES



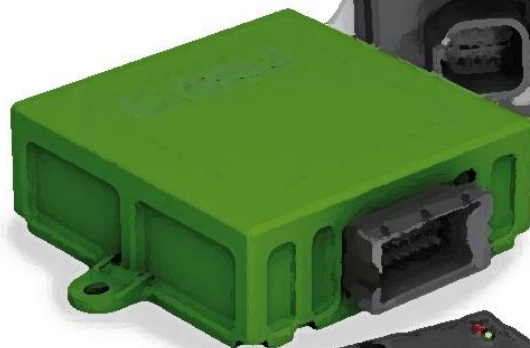
**AT BOARDMATE**

**VENT**

**M12 / MAX M12**

**AT SERIES**

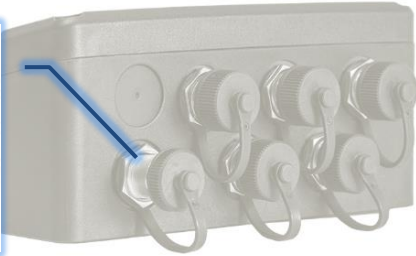
## CONSTRUCTION - ELECTRONICS, MCU



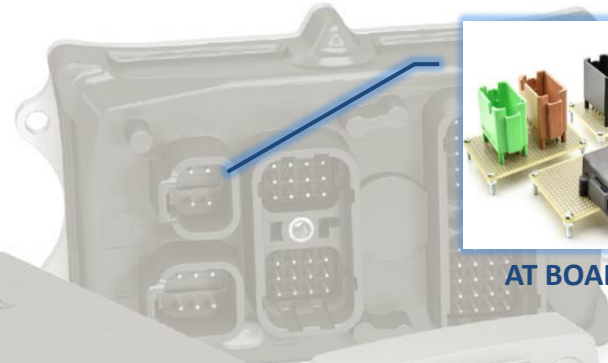
# CONSTRUCTION - ELECTRONICS, MCU - HC32, LRVC, AT PCB, M12, HM



**M12**



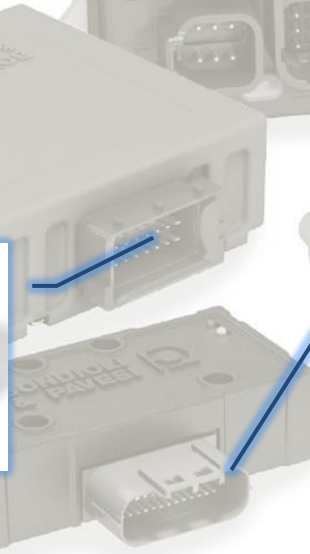
**AT BOARDMATE**



**HEAVY MATE**



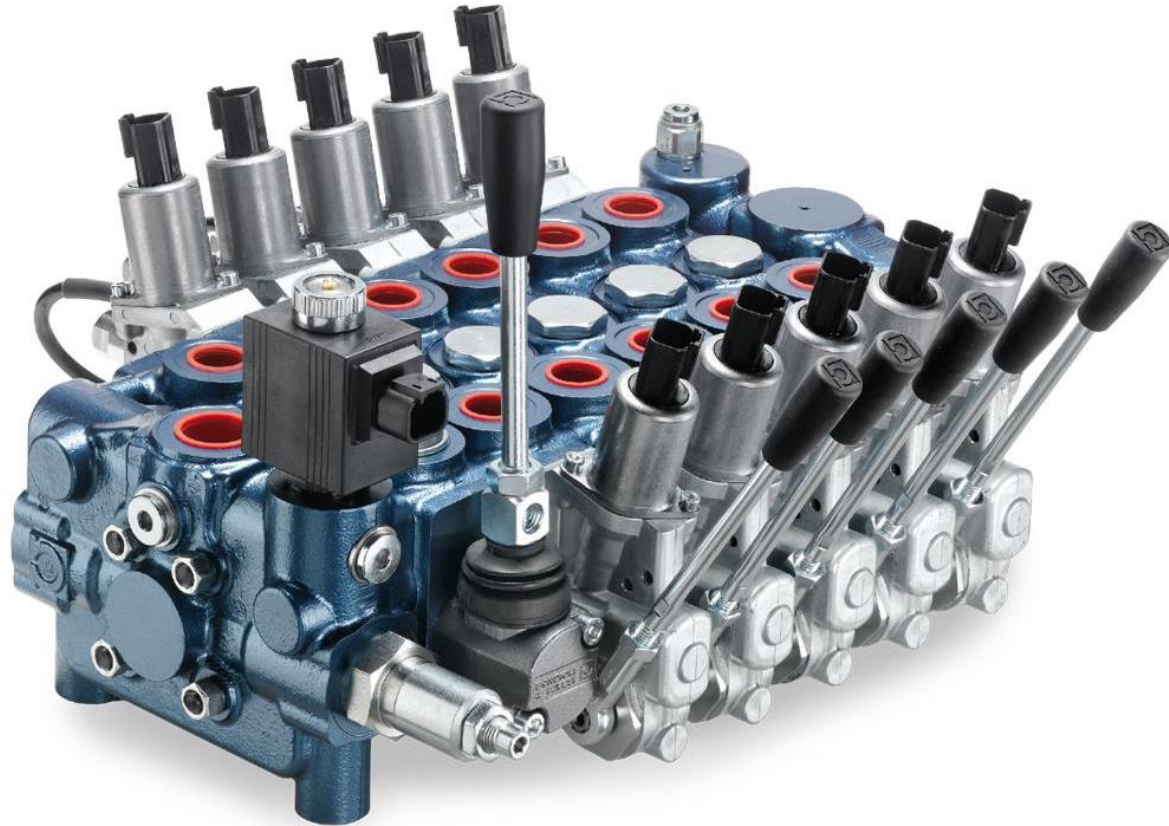
**HC 32**



**LRVC 35**

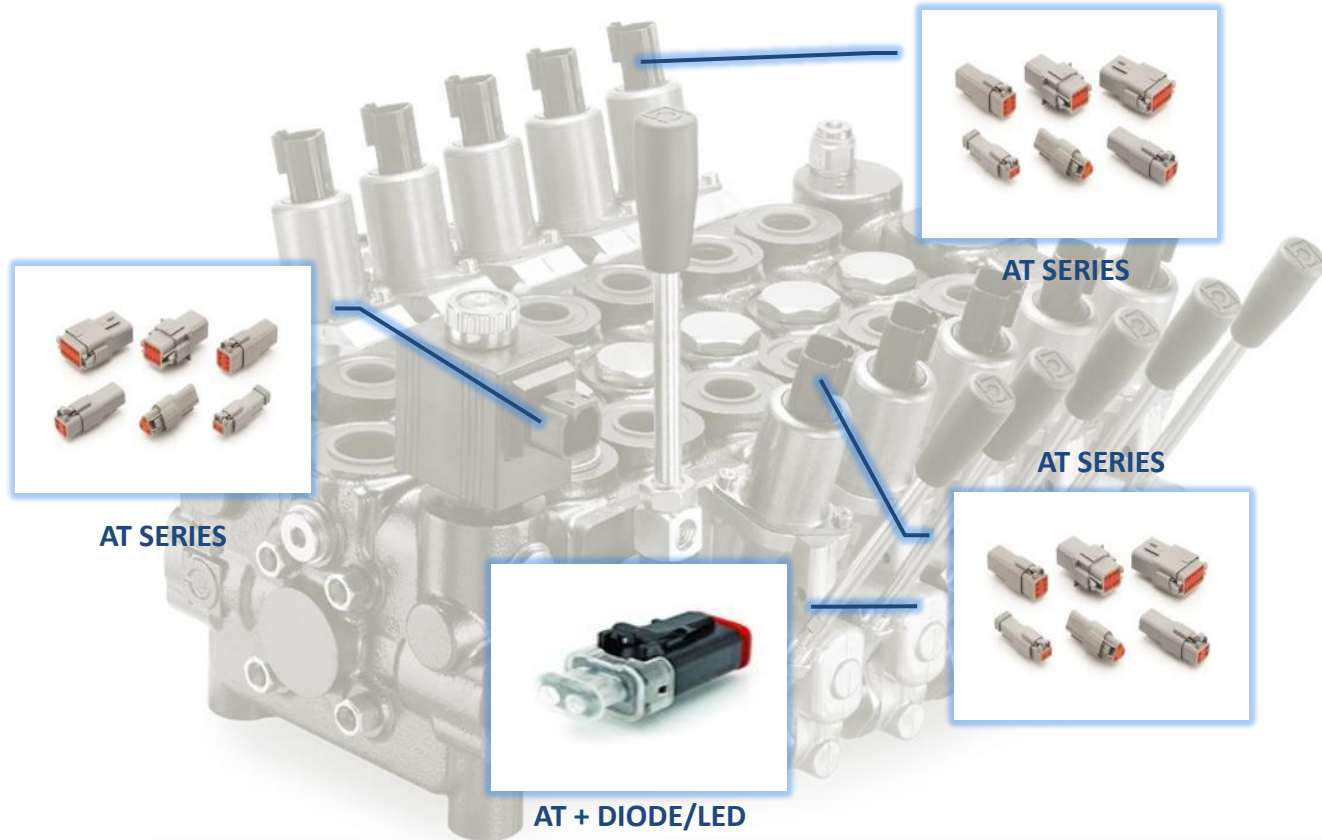


## CONSTRUCTION - VALVES, OLEODYNAMIC DRIVES





# CONSTRUCTION - VALVES, OLEODYNAMIC – AT, AT WITH DIODE



## CONSTRUCTION - VALVES, OLEODYNAMIC



## CONSTRUCTION - PAVERS, ROAD CONSTRUCTION



# CONSTRUCTION - PAVERS, ROAD CONSTRUCTION

UPT/RTG



AT SERIES

HEAVY MATE



ACTIVE PIN LOCK



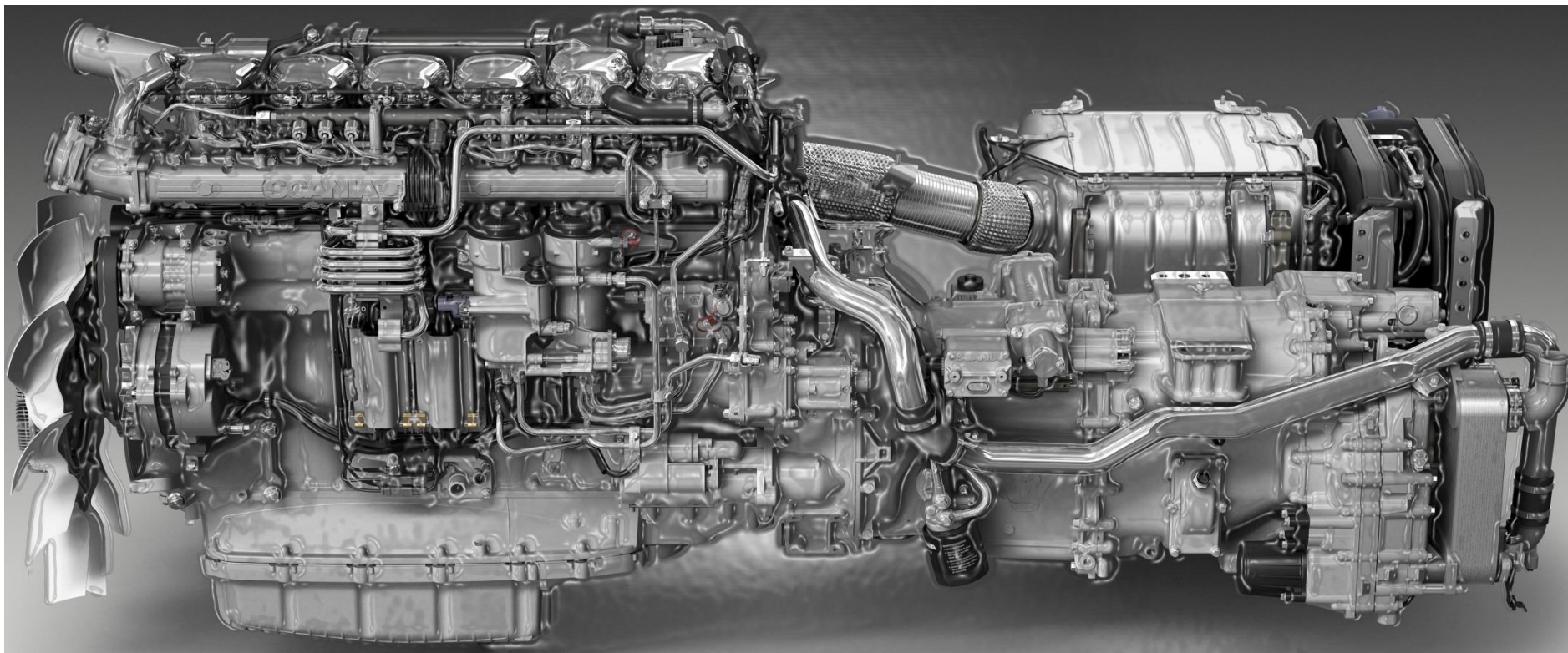
DURAMATE



## TRUCKS – TRACTOR



## TRUCKS – DIESEL ENGINE



# TRUCKS - TRU-LOK & A-SERIES



AT SERIES



TRU-LOC



AT SERIES



AT SERIES



TRU-LOC

## TRUCKS – DIESEL ENGINE





# TRUCKS - TRU-LOK, MIL-26482

MIL 26482

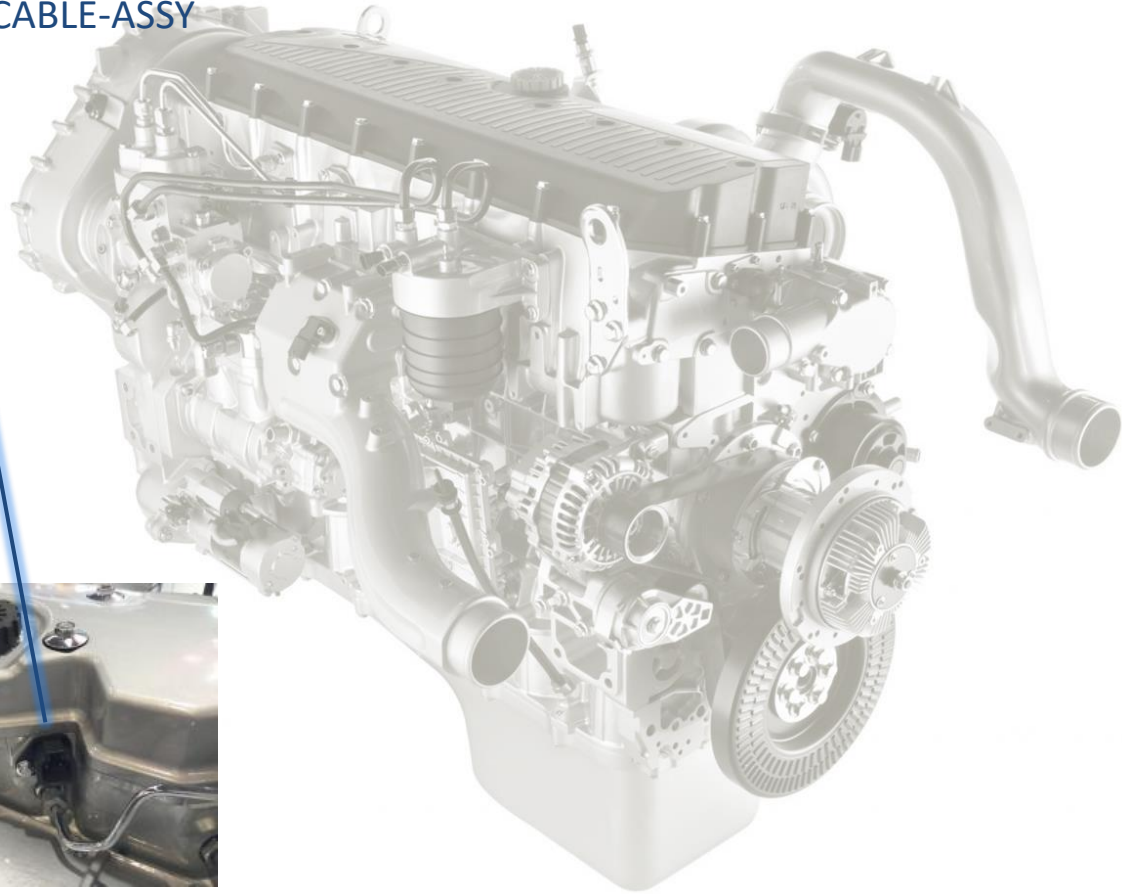


TRU-LOC

## TRUCKS – DIESEL ENGINE



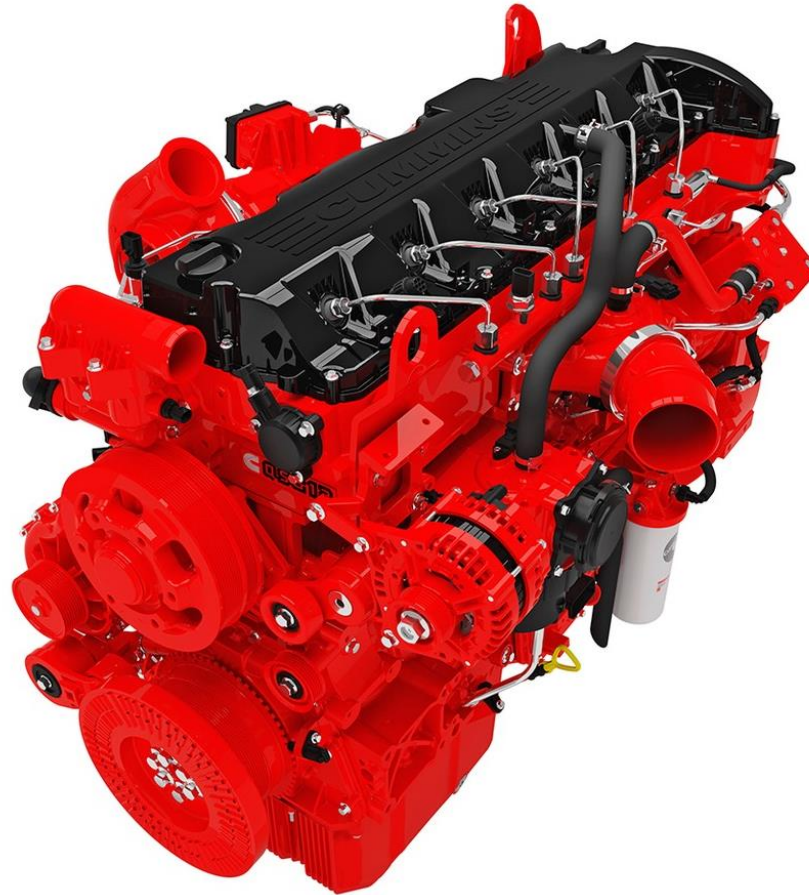
## TRUCKS – A-SERIES CABLE-ASSY



**AT ASSY**



## TRUCKS – DIESEL ENGINE



## TRUCKS - AMPHE-LITE



**AMPHE-LITE**

## MATERIAL HANDLING - FORKLIFT



# MATERIAL HANDLING - FORKLIFT – RADLOK, AT



**RADLOK**

**AT SERIES**

## MATERIAL HANDLING - TELESCOPIC





# MATERIAL HANDLING - TELESCOPIC – UPT, DURAMATE,

**HEAVY MATE**



**M12/MAX-M12**



**UPT/RTG**

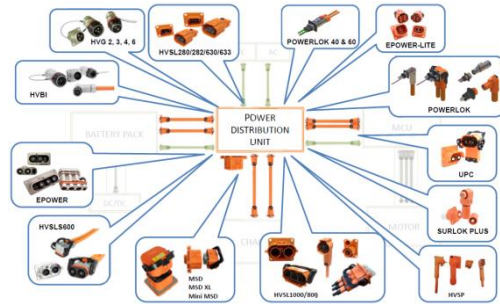


**AT + DIODE/LED**

**ATC/AHD10**



# CROSS SELLING – HIGH VOLTAGE + LOW VOLTAGE



+



HE



EV



## DISCLAIMER

**Some of the products shown within this presentation may not be currently in use at the companies and equipment illustrated.**

The pictures and information provided by this presentation are for general informational purposes only. All information is provided in good faith, however we make no representation or warranty of any kind, express or implied, regarding the accuracy, validity, or completeness.

A 3D rendered image of two white robotic hands, each holding a silver interconnect cable. The hands are positioned on the left and right sides of the frame, with their fingers gripping the cables. The background is a dark blue gradient with faint, out-of-focus images of interconnect components. The central text is in large, white, bold, sans-serif font.

# YOUR PARTNER FOR INTERCONNECT SOLUTIONS