

AMPHENOL INDUSTRIAL PRODUCTS GROUP PRODUCT PRESENTATION AND CAPABILITIES

AMPHENOL CORPORATION

TOTAL SALES

- OVER 80 YEAR HISTORY, LISTED ON NYSE SINCE 1991

- SECOND LARGEST INTERCONNECT MANUFACTURER IN THE WORLD



- HIGH TECHNOLOGY INTERCONNECT SOLUTIONS
- LEADING POSITIONS IN DIVERSE MARKETS



- BROAD GLOBAL PRESENCE AND CAPABILITY
- OVER 90,000 EMPLOYEES WORLDWIDE
- TOTAL NET SALES 2021: US \$ 10,9 BILLION

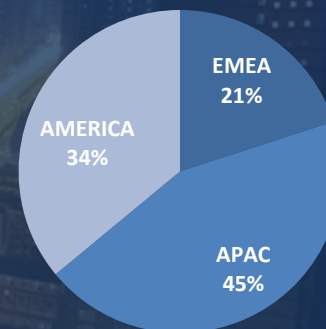


GLOBAL PRESENCE IN THE MARKET

SALES BY REGION



% SALES BY REGION



2021 SALES \$ 10,876 BIL



90,000 EMPLOYEES

Manufacturing Operations & Sales				Sales			
Australia	France	Italy	Morocco	Switzerland	Argentina	Russia	
Brazil	Germany	Japan	New Zealand	Taiwan	Austria	Spain	
Canada	Hungary	Korea	Poland	Tunisia	Finland	South Africa	
China	India	Macedonia	Puerto Rico	UAE	Ireland	Turkey	
Czech Republic	Indonesia	Malaysia	Singapore	United Kingdom	Saudi Arabia	Vietnam	
Estonia	Israel	Mexico	Slovakia	United States			

EXCELLENT RECORD OF ACHIEVEMENTS

AMPHENOL 10 Year CAGR

Sales 11%
> 2x Industry Growth

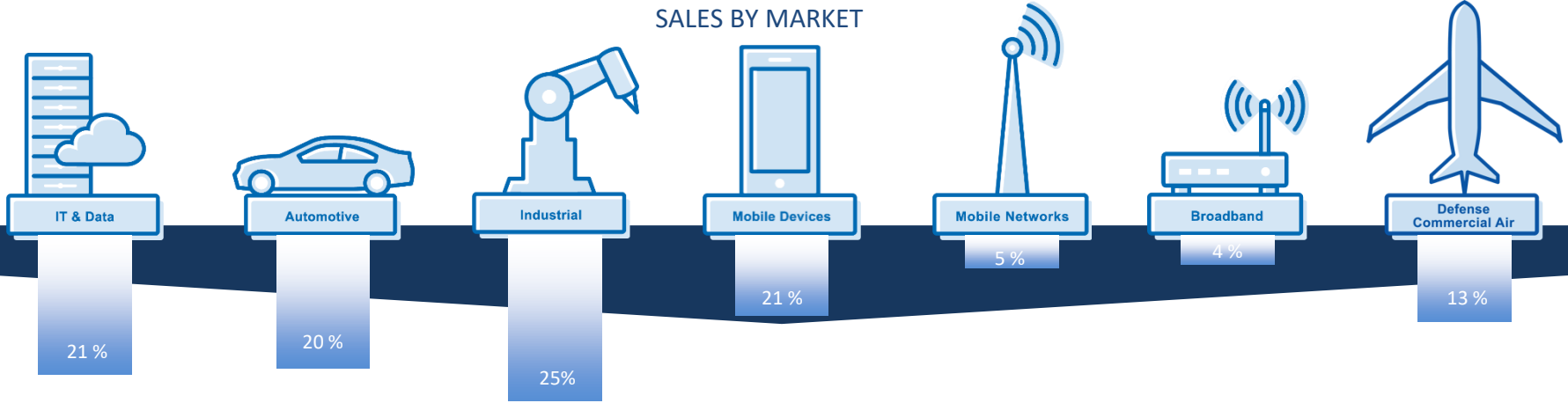


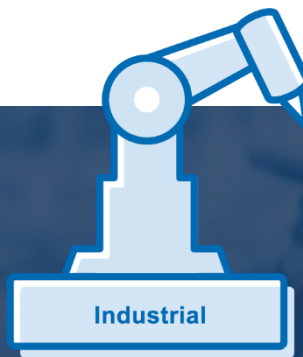
Net Sales (\$ in millions)

- INDUSTRY LEADING GROWTH FOR OVER A DECADE
- INDUSTRY LEADING OPERATING PROFIT MARGINS IN ALL BUSINESS CYCLES
- STRONG CASH FLOW GENERATION
- SUCCESSFUL ACQUISITION PROGRAM IN CONSOLIDATING INDUSTRY

GLOBAL LEADER IN THE MARKET

SALES BY MARKET





AMPHENOL INDUSTRIAL PRODUCTS GROUP

24 OPERATIONS GLOBALLY IN EMEA, AMERICA AND APAC

LEADING POSITIONS IN DIVERSE INDUSTRIAL SUB MARKETS

TOTAL NET SALES INDUSTRIAL MARKET FOR AMPHENOL 2021: US \$ 2.725 BILLION

AMPHENOL INDUSTRIAL MANUFACTURING OPERATIONS



Amphenol Bernd Richter
Wipperfurth, Germany



Amphenol TPI
Winnipeg, Canada



Amphenol Tuchel Industrial
Heilbronn, Germany/Ostrov, CZ



Amphenol NeLson Dunn
Houston TX, USA



Amphenol Industrial Operations
Nogales, Mexico/Endicott-NY



Amphenol Alden
Brockton-MA, USA



Amphenol Sine
Nogales, Mexico/Clinton Twp-MI



Amphenol Middle East
UnitedArab Emirates



Amphenol EEC
Chicago-IL, USA



Amphenol Sincere Industrial
Pecs, Hungary



Amphenol DC Electronics
San Jose-CA, USA



Amphenol Australia
Carrum Downs,Australia



Amphenol MPI
Morgan Hill CA, USA



Amphenol Conec
Lippstadt, Germany



Amphenol Sincere
Guangzhou, China



Amphenol PCD
Shenzhen, China



Amphenol Goldstar
Baicheng / Yulin, China



Amphenol Daeshin
Bucheon-City, South Korea



Amphenol Onaon
Milpitas, USA



Amphenol GEC
Changzhou, China



Amphenol Technology SZ
Shenzhen, China



Amphenol Anytek
Shenzhen, China



Amphenol Technology Zh
Zuhai, China



Amphenol LTW
Taipei, TW/ Kunshan, China



Cable Assemblies

Connectors

Testing

Flex Circuits

AMPHENOL INDUSTRIAL VERTICAL FOCUS MARKETS

HEAVY
EQUIPMENT



RENEWABLE
ENERGY



AUTOMATION &
ROBOTICS



HYBRID &
ELECTRIC VEHICLES



MARINE



TEST, MEASUREMENT &
INSTRUMENTATION



LIGHTING &
ENTERTAINMENT



OIL & GAS



MEDICAL



RAIL MASS
TRANSIT



VERTICAL MARKET

HEAVY EQUIPMENT

- Waterproof IP67 & IP69K
- Robust
- Vibration proof
- Power, signal & hybrid arrangements



VERTICAL MARKET

TEST & MEASUREMENT & INSTRUMENT

- Waterproof IP67 & IP69K
- Robust
- Vibration proof
- Power, signal & hybrid arrangements



VERTICAL MARKET
**RENEWABLE
ENERGY**

- Waterproof IP67, IP68 & IP69K
- TUV and UL approval
- UV resistant
- Power up to 2000A
- Cables size from 0,25mm² to 400mm²
- Signal & hybrid arrangements



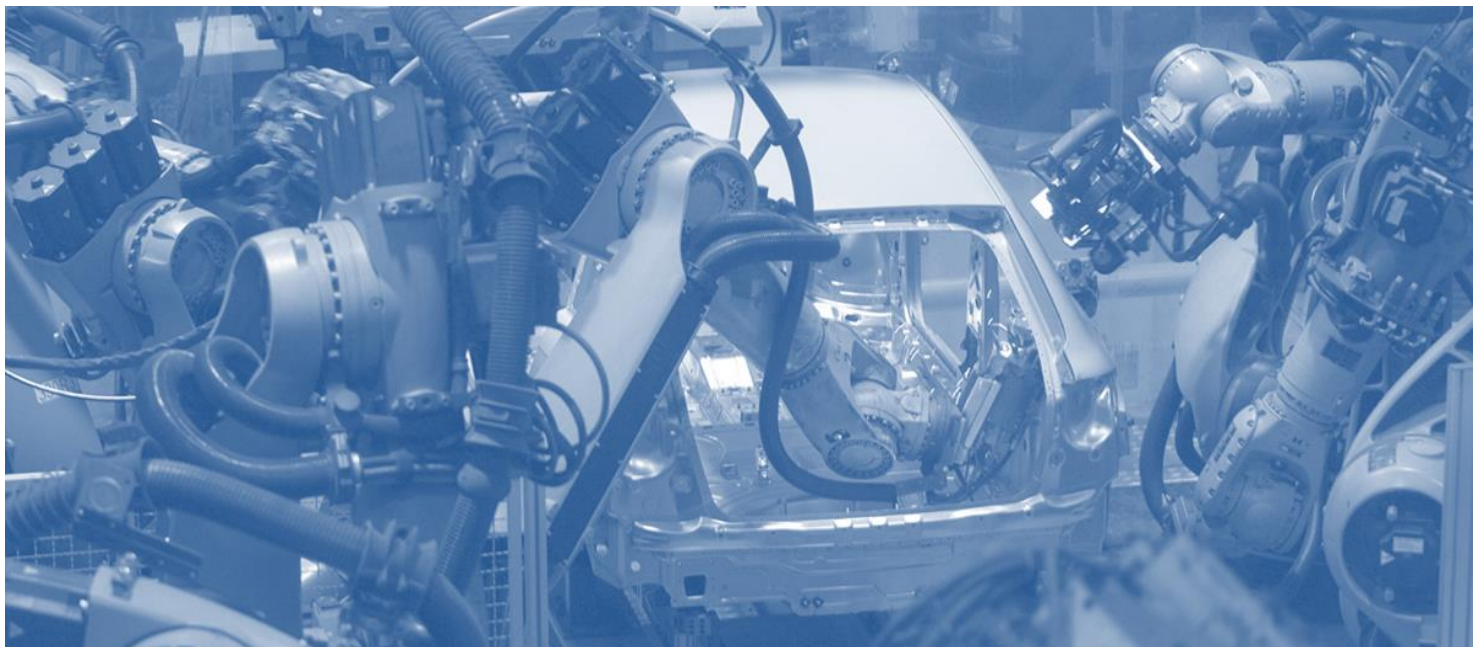
VERTICAL MARKET
**LIGHTING &
ENTERTAINMENT**

- High quality audio performance
- High-speed data transmission
- Different entertainment applications
- Allows almost limitless flexibility



VERTICAL MARKET **AUTOMATION & ROBOTICS**

- Standard market interfaces:
Metric: M8/M12/M16/M23/M40
Mil derivatives: 5015 and 26482
Rectangular interface
- Power, signal & hybrid arrangements
- High Speed data transmission
- EMI shielded solutions



VERTICAL MARKET OIL & GAS

- Waterproof IP67, IP68 & IP69K
- ATEX, IECEX, EAC, INMETRO, AEX, UL, CE
- Power up to 2000A
- Cables size from 0,25mm² to 400mm²
- Signal & hybrid arrangements
- High pressure insert
- Hermetic options
- IEC309 standard



VERTICAL MARKET

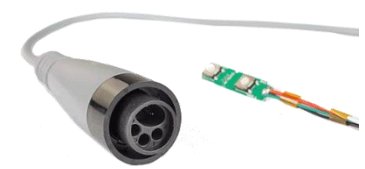
HYBRID & ELECTRIC VEHICLES

- High voltage
- High power
- Connection solution for electric vehicles
- Integrated high voltage safety locking
- 360° shielding
- Vibration resistant
- IP67 / IP69K



VERTICAL MARKET **MEDICAL**

- High voltage solutions up to 75KV
- FDA registered plant
- ISO 13485:2003, CLASS III
- TPU, TPE, PVC molding capabilities
- Low pressure injection molding
- Fine pitch up to AWG44 termination
- Assemblies



VERTICAL MARKET
MARINE

- Waterproof IP68 & IP66
- NMEA 2000 standard interfaces
- Cables size from 0,25mm² to 400mm²
- Signal & hybrid arrangements
- Radar/GPS/Display interconnect
- Lighting Plug&Play options



VERTICAL MARKET
**RAIL MASS
TRANSIT**

- High voltage & High current
- Interconnect for rolling stock and signalling
- IRIS certified plants
- EN45545-2 approval fire/smoke
- High vibration resistant
- IP67 & IP68
- High speed data transmission
- Intercar jumpers



AMPHENOL INDUSTRIAL SOLUTION FOR HEAVY EQUIPMENT



DURA|MATE AHDP



ATC & AHD



C16-3



M8 & M12



MAX M12



RAD|LOK



MIL|5015 GT



BUSBAR



MIL|5015 AC



SUR|LOK PLUS



ACTIVE PIN|LOK



MIL|26482 - LPT



AT BOARD|MATE



A SERIES



MIL|26482 - UPT



ISOBUS



LVRC



ECO|MATE AQUARIUS



MIL|26482 PT&CMB



USB IP68



HC32



TRU|LOC



ATHD



AMPHE|LITE



RJ45 IP68



ARMOR|IPX



ECU HEADER



DURA|MATE AHDM



AT PANEL



X|LOCK



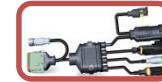
AT BOOT



ECO|MATE



MOLDED SOLUTIONS



JUNCTION SYSTEMS



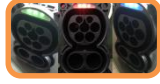
AMPHENOL INDUSTRIAL SOLUTION FOR BATTERIES & HEV



EPOWER



HVCO



HVCO INLET



HVPT



HVBI



HVG



RAD|LOK



HVSL



HVSL - AUX



HVSLW



HVSL BB & PCB



CABLE ASSEMBLY



BUSBAR



EPOWER|LITE



UPC



POWER TO BOARD



CCS



FPCA



HVPC



HVSLS



PDU



POWER|LOK G1



POWER|LOK G2



ACTIVE PIN|LOK



MSD



MSD-XL



MSD-MINI



LVRC



HVSP



SUR|LOK PLUS



BSM



HC32



BSM - HVE080



AMPHENOL INDUSTRIAL SOLUTION FOR RAIL MASS TRANSIT



EPOWER



ASGP



AMPHE|LITE



HEAVY|MATE



TERMINAL BLOCKS



MAX|M12



ADGC SERIES



EMP



A SERIES



MIL|5015 ASGTC



HVGTC SERIES



MIL|26482 ASCB



MIL|5015 ASVG



MIL|5015 AC



M8 & M12



MIL|5015 GT



MRC SERIES



FLEX



MIL|26482 PT&CMB



ASPRC SERIES



ASTP SERIES



HEATSHRINK



D-SUB EMI SHELL



RFM



BUSBAR



M12 PUSH-PULL



WIND|LOK



AMPHENOL INDUSTRIAL SOLUTION FOR AUTOMATION & ROBOTICS



C091



HEAVY|MATE



ECO|MATE RM



M8 & M12



M23 & M40



B12&B23 HYBRID



RBL



MICRO|BAYONET



FO IP68



MIL|5015 DL



M12 PRONTO QUICK



USB IP68



RJ45 IP68



MIL|5015 AC



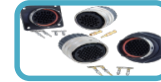
MIL|5015 97



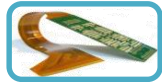
MIL|5015 GT



MIL|26482 LPT



UPT



FLEX



MIL|26482 PT&CMB



AMPHE|LITE



DSUB IP68



C16-3



ECO|MATE



HS|LOK



X|LOK



CERES



VENT



TERMINAL BLOCKS



ECO|MATE AQUARIUS



AMPHE|PD



XCEL POWER



AMPHE|GTR



AMPHE|PRB



7/8 INCH



MINI BOSS M22



POWER BOSS M29



POWER BOSS M35



POWER BAYONET



M12 BAYONET



AMPHENOL INDUSTRIAL SOLUTION FOR TEST & MEASUREMENT & INSTR.



C091



HEAVY|MATE



ECO|MATE RM



M8 & M12



SPECTRUM



FLO



RBL



MICRO|BAYONET



FO IP68



PULSE|LOK



HIGH VOLTAGE



USB IP68



RJ45 IP68



MIL|5015 AC



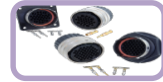
MIL|5015 97



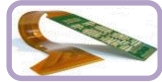
MIL|5015 GT



MIL|26482 LPT



UPT



FLEX



MIL|26482 PT&CMB



AMPHE|LITE



DSUB IP68



ECO|MATE AQUARIUS



ECO|MATE



HS|LOK



X|LOK



CERES



VENTS



TERMINAL BLOCKS



HPT HERMETIC



M12 PUSH-PULL



HAC HERMETIC



HAL HERMETIC



AMPHENOL INDUSTRIAL SOLUTION FOR LIGHTING & ENTERTAINMENT



FLEX



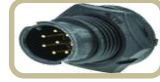
VENT



ECO|MATE



HEAVY|MATE



CERES



RBL



M8 & M12



FICX|JOINERS



SSL



X|LOK



USB IP68



RJ45 IP68



DSUB IP68



TERMINAL BLOCKS



IPCS



HS|LOK



AUDIO AC



AMPHE-PHASE



ECO|MATE AQUARIUS



AUDIO XLR|NET



AUDIO JACK



AUDIO RCA



AUDIO SP



AUDIO HPT



AMPHENOL INDUSTRIAL SOLUTION FOR RENEWABLE ENERGY



C16-3 L



WIND|LOK



HELIOS H4



H4 PLUS



RAD|LOK



H4 TOOLING



SUR|LOK PLUS



PV GROUNDING



SOLAR FUSE



SPLITTER



X|LOK



TERMINAL BLOCKS



FICX|JOINERS



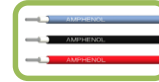
RBL



COMBINER BOX



BUSBAR



PV CABLE



AMPHE-PHASE



XCEL POWER



VENT



RJ45 IP68



AMPHE|GTR



AMPHE|PRB



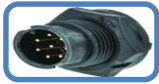
POWER BAYONET



AMPHENOL INDUSTRIAL SOLUTION FOR MARINE



NMEA 2000



CERES



X|LOK



HS|LOK



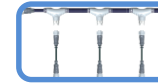
FICX|JOINERS



M8 & M12



RBL



IPCS



VENT



RJ45 IP68



D|SUB IP68



USB IP68



A SERIES



DURA|MATE AHDP



AT PANEL



AMPHE|LITE



ECO|MATE



SUR|LOK PLUS



FO IP68



AMPHENOL INDUSTRIAL SOLUTION FOR MEDICAL



PULSE|LOK



PULSE|ONE



HIGH VOLTAGE



SPECTRUM



X|LOK



HS|LOK



FLEX



FLO



MOLDED ASSEMBLIES



MIL|5015 97



VENTS



TERMINAL BLOCKS



HPT HERMETIC



M12 PUSH-PULL



RBL



MICRO|BAYONET



FO IP68



M8 & M12



C091



HEAVY|MATE



MIL|26482 PT&CMB



AMPHE|LITE



DSUB IP68



ECO|MATE AQUARIUS



ECO|MATE



USB IP68



RJ45 IP68



CERES



POWER BAYONET



M12 BAYONET



M12 PRONTO QUICK



AMPHE|PRB



HAC HERMETIC



HAL HERMETIC



B12&B23 HYBRID



SUR|LOK PLUS



ACTIVE PIN|LOK



RAD|LOK



AMPHENOL INDUSTRIAL SOLUTION FOR OIL & GAS



STARLINE|EX



AMPHE|EX



RIG|LOK



KTK



CABLE GLANDS



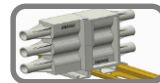
NEPTUNE



R24/R49



EX|309



ZEUS



AMPHE|EX RJ45



STARLINE|EX FO



HDE



SERVICE LOOPS



HERMETIC



STARLINE



AMPHE-PHASE



MIL-DTL-5015 REVERSE BAYONET: GT & ACA-B SERIES

Amphenol Industrial Operation (AIO-ATZ)

APPROVAL EN45545-2	YES
COMPATIBLE/COMPETITION PRODUCTS	CANNON CIR
CONTACT TYPE	SOLID
CONTACT WIRE GAUGE	AWG0-20/0,5-70MM ²
EMI OPTION	YES
HARDWARE COUPLING MECHANISM	REVERSE BAYONET
HARDWARE NR INSERT ARRANGEMENTS	292
IP RATING MATED	IP67-68
MATERIAL SHELL	AL OR AISI
MATING CYCLES	2000
MAX CURRENT RATING ACCORDING TO EN91684 (AT 20C)	245A
OPERATING TEMPERATURE	-55C TO +125C



MIL-DTL-5015 REVERSE BAYONET: ASGTC SERIES

Amphenol PCD Shenzhen (APCD)

APPROVAL EN45545-2	YES
COMPATTIBLE/COMPETITION PRODUCTS	JAE
CONTACT TYPE	SOLID
CONTACT WIRE GAUGE	AWG0-20/0,5-70MM ²
EMI OPTION	YES
HARDWARE COUPLING MECHANISM	REVERSE BAYONET
HARDWARE NR INSERT ARRANGEMENTS	20
IP RATING MATED	IP67
MATERIAL SHELL	AL
MATING CYCLES	1500
MAX CURRENT RATING ACCORDING TO EN91684 (AT 20C)	125A
OPERATING TEMPERATURE	-55C TO +125C



Catalog



Presentation



MIL-DTL-5015 REVERSE BAYONET: ASGTC QUADRAX & GIGABIT

Amphenol PCD Shenzhen (APCD)

APPROVAL EN45545-2	YES
COMPATIBLE/COMPETITION PRODUCTS	NA
CONTACT TYPE	SOLID
CONTACT WIRE GAUGE	4-8PR X 0,5MM ²
EMI OPTION	YES
HARDWARE COUPLING MECHANISM	REVERSE BAYONET
HARDWARE NR INSERT ARRANGEMENTS	17
IP RATING MATED	IP67
MATERIAL SHELL	AL
MATING CYCLES	500
MAX CURRENT RATING ACCORDING TO EN91684 (AT 20C)	20A
OPERATING TEMPERATURE	-55C TO +125C



ASGTC QUADRAX



ASGTC QUADRAX GIGABIT MODULE



Catalog



Presentation



MIL-DTL-5015 REVERSE BAYONET : ASVG SERIES

Amphenol PCD Shenzhen (APCD)

APPROVAL EN45545-2	YES
COMPATIBLE/COMPETITION PRODUCTS	CANNON VBN
CONTACT TYPE	SOLID
CONTACT WIRE GAUGE	AWG12-20/0,5-2,5MM ²
EMI OPTION	YES
HARDWARE COUPLING MECHANISM	REVERSE BAYONET
HARDWARE NR INSERT ARRANGEMENTS	27
IP RATING MATED	IP67
MATERIAL SHELL	AL
MATING CYCLES	1000
MAX CURRENT RATING ACCORDING TO EN91684 (AT 20C)	125A
OPERATING TEMPERATURE	-55C TO +125C



MIL-DTL-5015 REVERSE BAYONET: ADGC SIZE 48

Amphenol Daeshin (ADS)

APPROVAL EN45545-2	YES
COMPATIBLE/COMPETITION PRODUCTS	CANNON CIR290
CONTACT TYPE	SOLID
CONTACT WIRE GAUGE	AWG4/0-95MM ²
EMI OPTION	NO
HARDWARE COUPLING MECHANISM	REVERSE BAYONET
HARDWARE NR INSERT ARRANGEMENTS	5
IP RATING MATED	IP67
MATERIAL SHELL	AL
MATING CYCLES	2000
MAX CURRENT RATING ACCORDING TO EN91684 (AT 20C)	450A
OPERATING TEMPERATURE	-55C TO +125C



Catalog



Presentation



MIL-DTL-5015 THREADED: MS & 97 SERIES

Amphenol Industrial Operation (AIO-ATZ)

APPROVAL EN45545-2	NO
COMPATIBLE/COMPETITION PRODUCTS	DDK D/MS
CONTACT TYPE	SOLID AND S&F
CONTACT WIRE GAUGE	AWG0-20/0,5-50MM ²
EMI OPTION	NO
HARDWARE COUPLING MECHANISM	THREADED
HARDWARE NR INSERT ARRANGEMENTS	119
IP RATING MATED	IP54
MATERIAL SHELL	AL
MATING CYCLES	500
MAX CURRENT RATING ACCORDING TO EN91684 (AT 20C)	245A
OPERATING TEMPERATURE	-55C TO +125C



Catalog



Presentation



MIL-DTL-5015 THREADED: AC & DS & MS SERIES

Amphenol Industrial Operation (AIO-ATZ) & Amphenol Daeshin (ADS)

APPROVAL EN45545-2	YES
COMPATIBLE/COMPETITION PRODUCTS	CANNON MS/CA-COM
CONTACT TYPE	SOLID
CONTACT WIRE GAUGE	AWG0-20/0,5-50MM ²
EMI OPTION	YES
HARDWARE COUPLING MECHANISM	THREADED
HARDWARE NR INSERT ARRANGEMENTS	130
IP RATING MATED	IP67
MATERIAL SHELL	AL
MATING CYCLES	500
MAX CURRENT RATING ACCORDING TO EN91684 (AT 20C)	245A
OPERATING TEMPERATURE	-55C TO +125C



Plug: 06



Inline: 01



Wall Mount: 01



Box Mount: 02



A	
AD	
AF	
E	
F	
R	
08:F	

NO REAR ACCESSORIES THREADS ON 02 BOX MOUNT RECEPTACLE



MIL-DTL-5015 THREADED: HERMETIC HAC SERIES

Amphenol Industrial Operation (AIO-ATZ)

APPROVAL EN45545-2	NO
COMPATIBLE/COMPETITION PRODUCTS	HERMETIC MANUFAC.
CONTACT TYPE	SOLID
CONTACT WIRE GAUGE	AWG12-20/0,5-4MM ²
EMI OPTION	YES
HARDWARE COUPLING MECHANISM	THREADED
HARDWARE NR INSERT ARRANGEMENTS	ON REQUEST – GLASS INSERT
IP RATING MATED	IP67
MATERIAL SHELL	STAINLESS STEEL
MATING CYCLES	500
MAX CURRENT RATING ACCORDING TO EN91684 (AT 20C)	41A
OPERATING TEMPERATURE	-55C TO +125C



**HELIUM LEAKAGE RATE
UP TO 1x10-8 CC/SEC @1PSI/1BAR**



Catalog



Presentation



MIL-DTL-5015 THREADED: DL SERIES FMLB GND

Amphenol Daeshin (ADS)

APPROVAL EN45545-2	NO
COMPATIBLE/COMPETITION PRODUCTS	DDK CE-05
CONTACT TYPE	SOLID
CONTACT WIRE GAUGE	AWG4-16/1-25MM ²
EMI OPTION	NO - GROUNDED PE
HARDWARE COUPLING MECHANISM	THREADED
HARDWARE NR INSERT ARRANGEMENTS	7
IP RATING MATED	IP54
MATERIAL SHELL	AL
MATING CYCLES	500
MAX CURRENT RATING ACCORDING TO EN91684 (AT 20C)	73A
OPERATING TEMPERATURE	-55C TO +125C



Box mounting Receptacle

Straight Plug

Right Angle Plug



Catalog



Presentation

MIL-DTL-26482 MINIATURE BAYONET: LPT SERIES

Amphenol Industrial Operation (AIO-ATZ)

APPROVAL UL	NO
COMPATIBLE/COMPETITION PRODUCTS	SOURIAU UTO
CONTACT TYPE	S&F
CONTACT WIRE GAUGE	AWG12-22/,25-2,5MM ²
EMI OPTION	YES
HARDWARE COUPLING MECHANISM	BAYONET
HARDWARE NR INSERT ARRANGEMENTS	20
IP RATING MATED	IP67
MATERIAL SHELL	FULL METAL
MATING CYCLES	500
MAX CURRENT RATING ACCORDING TO EN91684 (AT 20C)	41A
OPERATING TEMPERATURE	-40C TO +105C



Catalog



Presentation



MIL-DTL-26482 MINIATURE BAYONET: ECO|MATE® RM SERIES

Amphenol Sine Systems Corporation (SINE)

APPROVAL UL	YES
COMPATIBLE/COMPETITION PRODUCTS	SOURIAU UTO
CONTACT TYPE	SOLID AND S&F
CONTACT WIRE GAUGE	AWG12-22/,25-2,5MM ²
EMI OPTION	YES
HARDWARE COUPLING MECHANISM	BAYONET
HARDWARE NR INSERT ARRANGEMENTS	20
IP RATING MATED	IP67
MATERIAL SHELL	FULL METAL
MATING CYCLES	500
MAX CURRENT RATING ACCORDING TO EN91684 (AT 20C)	300A
OPERATING TEMPERATURE	-55C TO +125C



MIL-DTL-26482 MINIATURE BAYONET: MS31XX & PT/CMB SERIES

Amphenol Industrial Operation (AIO-ATZ)

APPROVAL UL	YES
COMPATIBLE/COMPETITION PRODUCTS	CANNON KPT
CONTACT TYPE	SOLID
CONTACT WIRE GAUGE	AWG12-22/,25-2,5MM ²
EMI OPTION	YES
HARDWARE COUPLING MECHANISM	BAYONET
HARDWARE NR INSERT ARRANGEMENTS	71
IP RATING MATED	IP67
MATERIAL SHELL	FULL METAL
MATING CYCLES	500
MAX CURRENT RATING ACCORDING TO EN91684 (AT 20C)	41A
OPERATING TEMPERATURE	-55C TO +125C



Catalog



Presentation



MIL-DTL-26482 MINIATURE BAYONET: ECO | MATE® ACQUARIUS SERIES

Amphenol Sine Systems Corporation (SINE)

APPROVAL UL	YES
COMPATIBLE/COMPETITION PRODUCTS	SOURIAU UTS
CONTACT TYPE	SOLID AND S&F
CONTACT WIRE GAUGE	AWG12-22/,25-2,5MM ²
EMI OPTION	NO
HARDWARE COUPLING MECHANISM	BAYONET
HARDWARE NR INSERT ARRANGEMENTS	17
IP RATING MATED	IP68
MATERIAL SHELL	FULL PLASTIC
MATING CYCLES	500
MAX CURRENT RATING ACCORDING TO EN91684 (AT 20C)	41A
OPERATING TEMPERATURE	-40C TO +105C



Catalog



Presentation



MIL-DTL-26482 MINIATURE BAYONET: UPT SERIES

Amphenol Industrial Operation (AIO-ATZ)

APPROVAL UL	NO
COMPATIBLE/COMPETITION PRODUCTS	SOURIAU UTG
CONTACT TYPE	SOLID AND S&F
CONTACT WIRE GAUGE	AWG12-18
EMI OPTION	YES
HARDWARE COUPLING MECHANISM	BAYONET
HARDWARE NR INSERT ARRANGEMENTS	4
IP RATING MATED	IP67
MATERIAL SHELL	FULL PLASTIC
MATING CYCLES	500
MAX CURRENT RATING ACCORDING TO EN91684 (AT 20C)	41A
OPERATING TEMPERATURE	-40C TO +105C



Catalog



Presentation



MIL-DTL-26482 MINIATURE BAYONET: ASCB

Amphenol PCD Shenzhen (APCD)

APPROVAL UL	NO
COMPATIBLE/COMPETITION PRODUCTS	NA
CONTACT TYPE	SOLID
CONTACT WIRE GAUGE	AWG12-22/,25-2,5MM ²
EMI OPTION	YES
HARDWARE COUPLING MECHANISM	BAYONET
HARDWARE NR INSERT ARRANGEMENTS	3
IP RATING MATED	IP67
MATERIAL SHELL	FULL METAL
MATING CYCLES	500
MAX CURRENT RATING ACCORDING TO EN91684 (AT 20C)	41A
OPERATING TEMPERATURE	-55C TO +125C



MIL-DTL-26482 MINIATURE BAYONET: AMPHE | BTS

Amphenol Industrial Operation (AIO-ATZ)

APPROVAL UL	YES
COMPATIBLE/COMPETITION PRODUCTS	YONHON - MOLEX
CONTACT TYPE	SOLID
CONTACT WIRE GAUGE	AWG12-8/2,5-16MM ²
EMI OPTION	YES
HARDWARE COUPLING MECHANISM	BAYONET
HARDWARE NR INSERT ARRANGEMENTS	3
IP RATING MATED	IP67
MATERIAL SHELL	METAL
MATING CYCLES	500
MAX CURRENT RATING ACCORDING TO EN91684 (AT 20C)	63A
OPERATING TEMPERATURE	-55C TO +125C



Catalog



Presentation



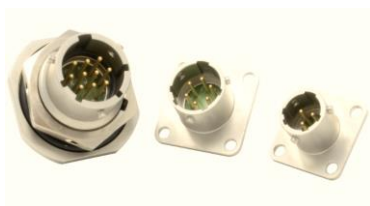
MIL-DTL-26482 MINIATURE BAYONET: HERMETIC HPT SERIES

Amphenol Industrial Operation (AIO-ATZ)

APPROVAL UL	NO
COMPATIBLE/COMPETITION PRODUCTS	HERMETIC MANUFAC.
CONTACT TYPE	SOLID
CONTACT WIRE GAUGE	AWG12-22/,25-2,5MM ²
EMI OPTION	YES
HARDWARE COUPLING MECHANISM	BAYONET
HARDWARE NR INSERT ARRANGEMENTS	ON REQUEST - GLASS
IP RATING MATED	IP67
MATERIAL SHELL	STAINLESS STEEL
MATING CYCLES	500
MAX CURRENT RATING ACCORDING TO EN91684 (AT 20C)	41A
OPERATING TEMPERATURE	-55C TO +125C



**HELIUM LEAKAGE RATE
UP TO 1x10⁻⁸ CC/SEC @1PSI/1BAR**



Catalog



Presentation



MIL-DTL-38999 ACME THREADED: AMPHE|LITE SERIES

Amphenol Industrial Operation (AIO-ATZ)

APPROVAL UL	YES
COMPATIBLE/COMPETITOR SERIES	38999
CONTACT TYPE	SOLID
CONTACT WIRE GAUGE	AWG12-22/,25-2,5MM ²
EMI OPTION	YES
HARDWARE COUPLING MECHANISM	ACME THREADED
HARDWARE NR INSERT ARRANGEMENTS	39
IP RATING MATED	IP67
MATERIAL SHELL	PLASTIC OR METAL
MATING CYCLES	500
MAX CURRENT RATING ACCORDING TO EN91684 (AT 20C)	41
OPERATING TEMPERATURE	-55C TO +125C



Catalog



Catalog



Presentation



MIL-DTL-38999 ACME THREADED: HERMETIC HAL SERIES

Amphenol Industrial Operation (AIO-ATZ)

APPROVAL UL	YES
COMPATIBLE/COMPETITOR SERIES	38999
CONTACT TYPE	SOLID
CONTACT WIRE GAUGE	AWG12-22/,25-2,5MM ²
EMI OPTION	YES
HARDWARE COUPLING MECHANISM	ACME THREADED
HARDWARE NR INSERT ARRANGEMENTS	ON REQUEST – GLASS INSERT
IP RATING MATED	IP67
MATERIAL SHELL	STAINLESS STEEL
MATING CYCLES	500
MAX CURRENT RATING ACCORDING TO EN91684 (AT 20C)	41
OPERATING TEMPERATURE	-55C TO +200C



**HELIUM LEAKAGE RATE
UP TO 1x10-8 CC/SEC @1PSI/1BAR**



Catalog



Presentation



MICRO-BAYONET

Amphenol Industrial Operation (AIO-ATZ)

APPROVAL UL	NO
COMPATIBLE/COMPETITOR SERIES	
CONTACT TYPE	SOLID & S&F
CONTACT WIRE GAUGE	AWG16-22/,25-1,5MM ²
EMI OPTION	YES
HARDWARE COUPLING MECHANISM	BAYONET
HARDWARE NR INSERT ARRANGEMENTS	6
IP RATING MATED	IP67
MATERIAL SHELL	METAL
MATING CYCLES	500
MAX CURRENT RATING ACCORDING TO EN91684 (AT 20C)	22A
OPERATING TEMPERATURE	-55C TO +125C



Catalog



Presentation



HERMETIC FEED-THROUGH

Amphenol Industrial Operation (AIO-ATZ)



**HELIUM LEAKAGE RATE
UP TO 1×10^{-8} CC/SEC @1PSI/1BAR**



WIND|LOK

Amphenol Industrial Operation (AIO-ATZ)

APPROVAL EN45545-2	NO
COMPATIBLE/COMPETITION PRODUCTS	NA
CONTACT TYPE	SOLID
CONTACT WIRE GAUGE	120-400MM ²
EMI OPTION	YES
HARDWARE COUPLING MECHANISM	REVERSE BAYONET
HARDWARE NR INSERT ARRANGEMENTS	2
IP RATING MATED	IP67
MATERIAL SHELL	AL OR AISI
MATING CYCLES	1000
MAX CURRENT RATING ACCORDING TO EN91684 (AT 20C)	1000A
OPERATING TEMPERATURE	-55C TO +125C



Catalog



Presentation



RIG|LOK

Amphenol Oil & Gas Technologies (AOGT)

APPROVAL EN45545-2	NO
COMPATTIBLE/COMPETITION PRODUCTS	NA
CONTACT TYPE	SOLID
CONTACT WIRE GAUGE	120-400MM ²
EMI OPTION	YES
HARDWARE COUPLING MECHANISM	REVERSE BAYONET
HARDWARE NR INSERT ARRANGEMENTS	2
IP RATING MATED	IP67
MATERIAL SHELL	AL OR AISI
MATING CYCLES	1000
MAX CURRENT RATING ACCORDING TO EN91684 (AT 20C)	1000A
OPERATING TEMPERATURE	-55C TO +125C



Catalog



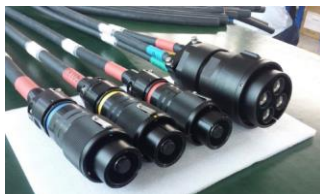
Presentation



REVERSE BAYONET: HVGTC

Amphenol PCD Shenzhen (APCD)

APPROVAL EN45545-2	YES
COMPATTIBLE/COMPETITION PRODUCTS	NA
CONTACT TYPE	SOLID
CONTACT WIRE GAUGE	95-240MM ²
EMI OPTION	YES
HARDWARE COUPLING MECHANISM	REVERSE BAYONET
HARDWARE NR INSERT ARRANGEMENTS	8
IP RATING MATED	IP67
MATERIAL SHELL	AL
MATING CYCLES	1000
MAX CURRENT RATING ACCORDING TO EN91684 (AT 20C)	1000A
OPERATING TEMPERATURE	-55C TO +125C



Catalog



Presentation



HEAVY|MATE® C146

Amphenol Tuchel Electronics Industrial (ATEI)

APPROVAL EN45545-2	YES
COMPATIBLE/COMPETITOR SERIES	HARTIN HAN
CONTACT TYPE	SOLID AND S&F
CONTACT WIRE GAUGE	26-1/0 / 0.14-705MM2
EMI OPTION	YES
HARDWARE COUPLING MECHANISM	BOLT/LEVER
HARDWARE NR INSERT ARRANGEMENTS	250
IP RATING MATED	IP67/68
MATERIAL SHELL	METAL&PLASTIC
MATING CYCLES	500
MAX CURRENT RATING ACCORDING TO EN91684 (AT 20C)	UP TO 300A
OPERATING TEMPERATURE	-40°C TO +125°C



Catalog



Presentation



HEAVY|MATE® C146 ETHERNET MODULE

Amphenol PCD Shenzhen (APCD)

APPROVAL EN45545-2	YES
COMPATIBLE/COMPETITOR SERIES	
CONTACT TYPE	SOLID
CONTACT WIRE GAUGE	26-14 / 0.14-2.5MM2
EMI OPTION	YES
HARDWARE COUPLING MECHANISM	BOLT/LEVER
HARDWARE NR INSERT ARRANGEMENTS	1,2,3,4
IP RATING MATED	IP68/69K
MATERIAL SHELL	METAL
MATING CYCLES	1.500
MAX CURRENT RATING ACCORDING TO EN91684 (AT 20C)	250A&400A&700A
OPERATING TEMPERATURE	-40°C TO +125°C



Catalog



Presentation



HEAVY|MATE® C146 HIGH POWER (ASRC)

Amphenol PCD Shenzhen (APCD)

APPROVAL EN45545-2	YES
COMPATIBLE/COMPETITOR SERIES	
CONTACT TYPE	SOLID
CONTACT WIRE GAUGE	16-240MM2
EMI OPTION	YES
HARDWARE COUPLING MECHANISM	BOLT
HARDWARE NR INSERT ARRANGEMENTS	1,2,3,4
IP RATING MATED	IP68/69K
MATERIAL SHELL	METAL
MATING CYCLES	1.500
MAX CURRENT RATING ACCORDING TO EN91684 (AT 20C)	250A&400A&700A
OPERATING TEMPERATURE	-40°C TO +125°C



Catalog



Presentation



EMP

Amphenol PCD Shenzhen (APCD)

APPROVAL EN45545-2	YES
COMPATIBLE/COMPETITOR SERIES	
CONTACT TYPE	SOLID
CONTACT WIRE GAUGE	25-240MM2
EMI OPTION	YES
HARDWARE COUPLING MECHANISM	BOLT
HARDWARE NR INSERT ARRANGEMENTS	3, 4, 6
IP RATING MATED	IP67
MATERIAL SHELL	METAL
MATING CYCLES	500
MAX CURRENT RATING ACCORDING TO EN91684 (AT 20C)	700A
OPERATING TEMPERATURE	-55°C TO +125°C



Catalog



Presentation



MOTION | GRADE® M23

Amphenol Sine Systems Corporation (SINE)

CONTACT SIZE	1,0 & 1,5 & 2,0MM
CONTACT TYPE	SOLID & S&F
CONTACT WIRE GAUGE	AWG12-22/,25-2,5MM ²
EMI OPTION	YES
HARDWARE COUPLING MECHANISM	THREADED/QUICK LOK
HARDWARE HOUSING TYPE	CIRCULAR
HARDWARE NR INSERT ARRANGEMENTS	16
IP RATING MATED	IP67
MATERIAL SHELL	METAL
MATING CYCLES	500
MAX CURRENT RATING ACCORDING TO EN91684 (AT 20C)	30A
OPERATING TEMPERATURE	-25C TO +125C



Catalog



Presentation



MOTION | GRADE® M40

Amphenol Sine Systems Corporation (SINE)

CONTACT SIZE	2,0 & 3,6MM
CONTACT TYPE	SOLID & S&F
CONTACT WIRE GAUGE	AWG8-18/0,5-10MM ²
EMI OPTION	YES
HARDWARE COUPLING MECHANISM	THREADED/QUICK LOK
HARDWARE HOUSING TYPE	CIRCULAR
HARDWARE NR INSERT ARRANGEMENTS	2
IP RATING MATED	IP67
MATERIAL SHELL	METAL
MATING CYCLES	500
MAX CURRENT RATING ACCORDING TO EN91684 (AT 20C)	80A
OPERATING TEMPERATURE	-25C TO +125C



Catalog



Presentation



B12, B17 & B23 Hybrid

Amphenol Conec (ACON)

BAYONET METRIC CONNECTORS	(B12) REVERSE BAYONET	(B17) REVERSE BAYONET	(B23) REVERSE BAYONET	(B40) REVERSE BAYONET
CONTACT TYPE	SOLID	SOLID	SOLID	SOLID
CONTACT WIRE GAUGE	AWG22 + AWG18	AWG22 + AWG16	AWG22 + AWG12	AWG22 + 16MM ²
EMI OPTION	YES ON FIELD INSTALL	YES ON FIELD INSTALL	YES ON FIELD INSTALL	YES ON FIELD INSTALL
HARDWARE COUPLING MECHANISM	REVERSE BAYONET	REVERSE BAYONET	REVERSE BAYONET	REVERSE BAYONET
HARDWARE HOUSING TYPE	CIRCULAR	CIRCULAR	CIRCULAR	CIRCULAR
IP RATING MATED	IP65, IP67	IP65, IP67	IP65, IP67	IP65, IP67
MATERIAL SHELL	METAL	METAL	METAL	METAL
MATING CYCLES	100	100	100	100
MAX CURRENT RATING ACCORDING TO EN61984 (AT 20C)	4A + 10A	4A + 14A	4A + 26A	4A + 64A
OPERATING TEMPERATURE	-25 °C to 80 °C	-25 °C to 80 °C	-25 °C to 80 °C	-25 °C to 80 °C



M22 (7/8') SERIES

Amphenol Conec (ACON)

CONTACT TYPE	SOLID
CONTACT WIRE GAUGE	AWG14-18
EMI OPTION	YES
HARDWARE COUPLING MECHANISM	THREADED
HARDWARE HOUSING TYPE	CIRCULAR
IP RATING MATED	IP65, IP67, IP6K9K
MATERIAL SHELL	PLASTIC
MATING CYCLES	100
MAX CURRENT RATING ACCORDING TO EN61984 (AT 20C)	UP TO 16A
OPERATING TEMPERATURE	-25 °C to 85 °C



7/8" OVERMOULDED



7/8" FIELD ATTACHABLE



7/8" PANEL MOUNT CONNECTORS



Catalog



Presentation



M22 (7/8') MINI | BOSS® SERIES

Amphenol Sine Systems Corporation (SINE)

CONTACT TYPE	SOLID
CONTACT WIRE GAUGE	AWG14-18
EMI OPTION	NO
HARDWARE COUPLING MECHANISM	THREADED
HARDWARE HOUSING TYPE	CIRCULAR
IP RATING MATED	IP67
MATERIAL SHELL	PLASTIC
MATING CYCLES	100
MAX CURRENT RATING ACCORDING TO EN61984 (AT 20C)	UP TO 16A
OPERATING TEMPERATURE	-25 °C to 85 °C



M29 POWER | BOSS® SERIES

Amphenol Sine Systems Corporation (SINE)



M35 POWER | BOSS® SERIES

Amphenol Sine Systems Corporation (SINE)



C091 (M16 SERIES)

Amphenol Tuchel Electronics Industrial (ATEI)

CONTACT SIZE	1,0 & 1,5MM
CONTACT TYPE	S&F
CONTACT WIRE GAUGE	AWG18-28/,1-1,0MM ²
EMI OPTION	YES
HARDWARE COUPLING MECHANISM	THREADED
HARDWARE HOUSING TYPE	CIRCULAR
HARDWARE NR INSERT ARRANGEMENTS	10
IP RATING MATED	IP67
MATERIAL SHELL	METAL/PLASTIC
MATING CYCLES	100
MAX CURRENT RATING ACCORDING TO EN91684 (AT 20C)	10A
OPERATING TEMPERATURE	-40C TO +100C



Catalog

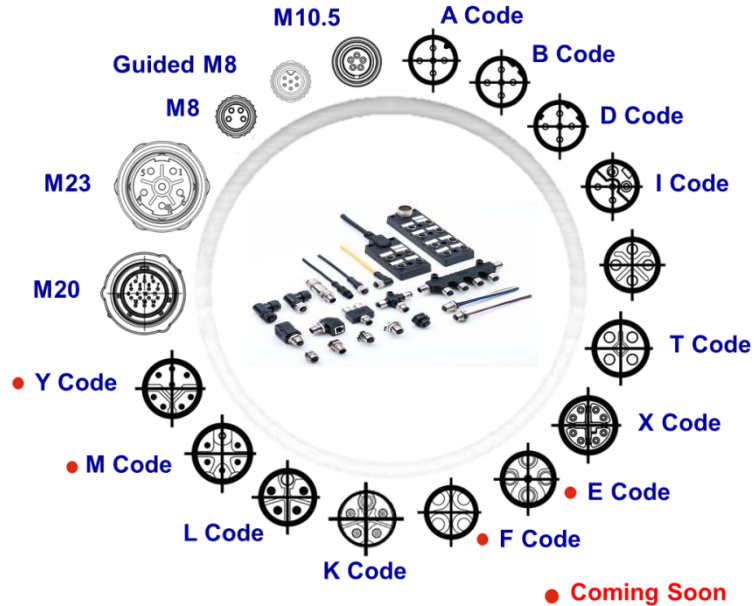


Presentation



M8 & M12

Amphenol LTW Technology Co. (LTW) & Amphenol Conec (ACON)



M12 PRONTO – QUICK LOCK

Amphenol LTW Technology Co. (LTW)



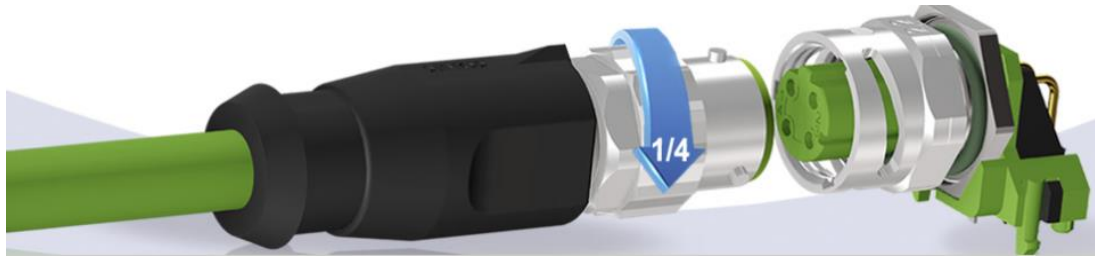
M12 PUSH-PULL

Amphenol PCD Shenzhen (APCD)



M12 BAYONET

Amphenol Conec (ACON)



M12-MAX

Amphenol Industrial Operation (AIO-ATZ)

APPROVAL UL	YES
COMPATIBLE/COMPETITOR SERIES	M12
CONTACT TYPE	SOLID & S&F
CONTACT WIRE GAUGE	AWG16-22/,25-1,5MM ²
EMI OPTION	YES
HARDWARE COUPLING MECHANISM	M12 THREAD
HARDWARE NR INSERT ARRANGEMENTS	88
IP RATING MATED	IP68
MATERIAL SHELL	PLASTIC, METAL
MATING CYCLES	500
MAX CURRENT RATING ACCORDING TO EN91684 (AT 20C)	4A
OPERATING TEMPERATURE	-55C TO +125C



Catalog



Presentation



M12/M8-HERMETIC

Amphenol Industrial Operation (AIO-ATZ)

APPROVAL UL	NO
COMPATIBLE/COMPETITOR SERIES	M12 & M8
CONTACT TYPE	SOLID
CONTACT WIRE GAUGE	AWG16-26/,14-1,5MM ²
EMI OPTION	YES
HARDWARE COUPLING MECHANISM	M12 THREAD
HARDWARE NR INSERT ARRANGEMENTS	ON REQUEST - GLASS INSERT
IP RATING MATED	IP67
MATERIAL SHELL	STAINLESS STEEL
MATING CYCLES	500
MAX CURRENT RATING ACCORDING TO EN91684 (AT 20C)	4A
OPERATING TEMPERATURE	-55C TO +200C



**HELIUM LEAKAGE RATE
UP TO 1x10⁻⁸ CC/SEC @1PSI/1BAR**



Catalog



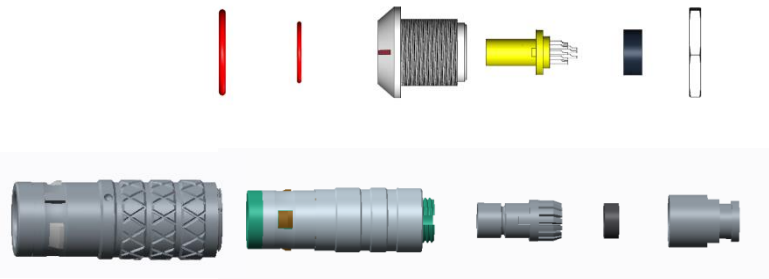
Presentation



FLO SERIES

Amphenol LTW Technology Co. (LTW)

APPROVAL UL	YES
COMPATIBLE/COMPETITOR SERIES	LEOMO/FISHER/ODU
CONTACT TYPE	SOLID
CONTACT WIRE GAUGE	AWG12-28/,14-4,0MM ²
EMI OPTION	YES
HARDWARE COUPLING MECHANISM	PUSH-PULL
HARDWARE NR INSERT ARRANGEMENTS	2-64
IP RATING MATED	UP TO IP68
MATERIAL SHELL	PLASTIC, METAL
MATING CYCLES	500
MAX CURRENT RATING ACCORDING TO EN91684 (AT 20C)	1,5-50A
OPERATING TEMPERATURE	-55C TO +125C



PLASTIC CIRCULAR: X|LOK

Amphenol LTW Technology Co. (LTW)

APPROVAL UL	YES
COMPATIBLE/COMPETITOR SERIES	
CONTACT TYPE	S&F
CONTACT WIRE GAUGE	AWG16-22/,25-1,5MM ²
EMI OPTION	NO
HARDWARE COUPLING MECHANISM	REVERSE BAYONET
HARDWARE NR INSERT ARRANGEMENTS	88
IP RATING MATED	IP68
MATERIAL SHELL	PLASTIC
MATING CYCLES	1.000
MAX CURRENT RATING ACCORDING TO EN91684 (AT 20C)	20A
OPERATING TEMPERATURE	-40C TO +105C



Catalog

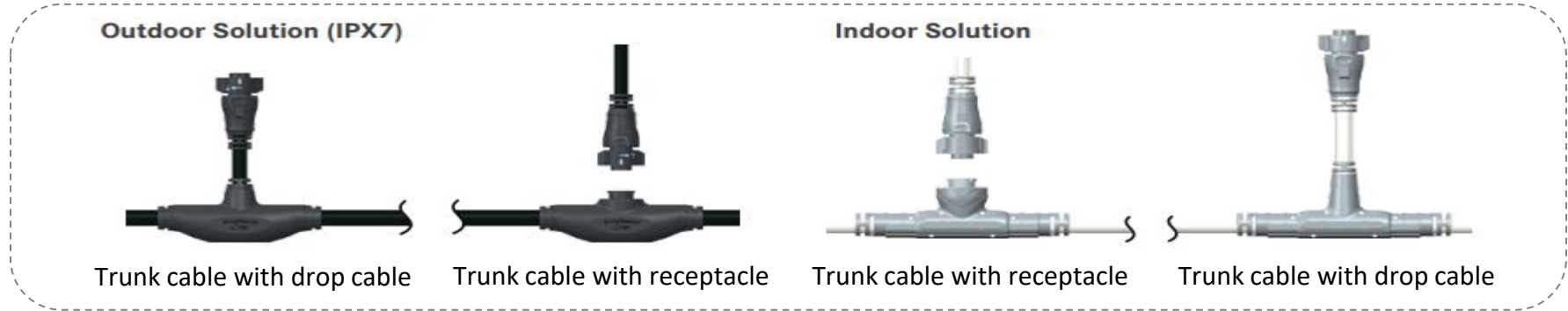


Presentation



IPCS

Amphenol LTW Technology Co. (LTW)



PLASTIC CIRCULAR: HS | LOK

Amphenol LTW Technology Co. (LTW)

CONTACT SIZE	5A, 10A
CONTACT TYPE	SOLID
CONTACT WIRE GAUGE	AWG20-24/,25-0,5MM ²
EMI OPTION	NO
HARDWARE COUPLING MECHANISM	PUSH LOCK
HARDWARE HOUSING TYPE	CIRCULAR
HARDWARE NR INSERT ARRANGEMENTS	6
IP RATING MATED	IP68
MATERIAL SHELL	PLASTIC
MATING CYCLES	2.000
MAX CURRENT RATING ACCORDING TO EN91684 (AT 20C)	5A
OPERATING TEMPERATURE	-40C TO +105C



Catalog



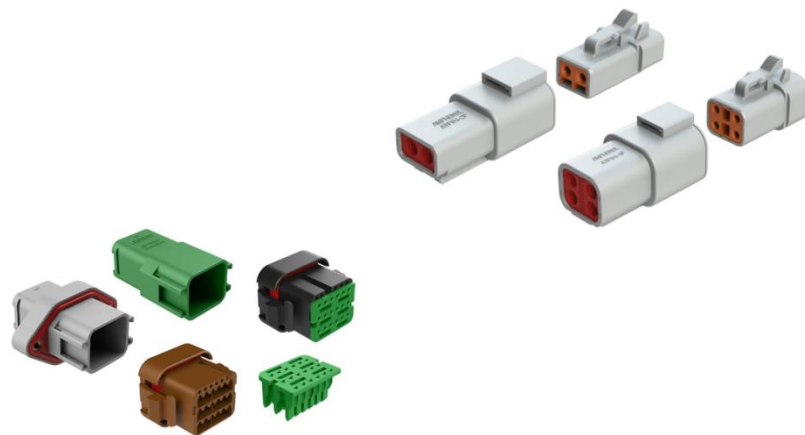
Presentation



AT & ATP & ATV SERIES

Amphenol Sine Systems Corporation (SINE)

APPROVAL UL	YES
COMPATIBLE/COMPETITOR SERIES	DT-DTM-DTP-DTV
CONTACT TYPE	SOLID & S&F
CONTACT WIRE GAUGE	AWG12-20/0,5-2,5MM ²
EMI OPTION	NO
HARDWARE COUPLING MECHANISM	PUSH-PULL
HARDWARE NR INSERT ARRANGEMENTS	2,3,4,6,8,12,13,18
IP RATING MATED	IP67
MATERIAL SHELL	PLASTIC
MATING CYCLES	100
MAX CURRENT RATING ACCORDING TO EN91684 (AT 20C)	25A
OPERATING TEMPERATURE	-40°C TO +125°C



AT SERIES SR

Amphenol Sine Systems Corporation (SINE)

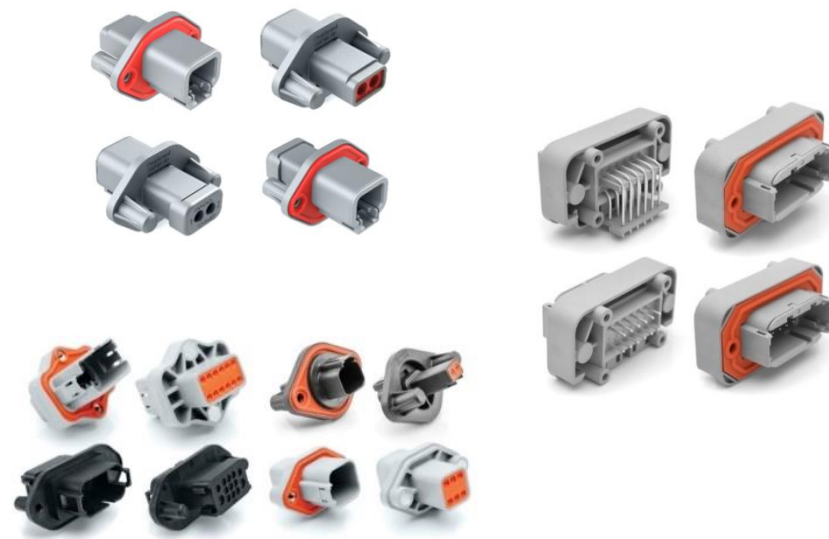
IP RATING MATED	IP67
MATERIAL	PLASTISOL
COLOUR OPTIONS	GREY, BLACK, YELLOW
OPERATING TEMPERATURE	-29°C TO +100°C
COMPATIBLE SERIES	AT 2-12 WAYS



AT SERIES PANEL | MATE

Amphenol Sine Systems Corporation (SINE)

APPROVAL UL	NA
COMPATIBLE/COMPETITOR SERIES	DT/DTM/DTP
CONTACT TYPE	CRIMP, PCB
CONTACT WIRE GAUGE	AWG12-18/,75-4MM ²
EMI OPTION	NO
HARDWARE COUPLING MECHANISM	PUSH-PULL
HARDWARE NR INSERT ARRANGEMENTS	2,3,4,6,8,12,13,18
IP RATING MATED	IP67
MATERIAL SHELL	PLASTIC
MATING CYCLES	100
MAX CURRENT RATING ACCORDING TO EN91684 (AT 20C)	7.5A, 13A, 25A
OPERATING TEMPERATURE	-40°C TO +125°C



Catalog



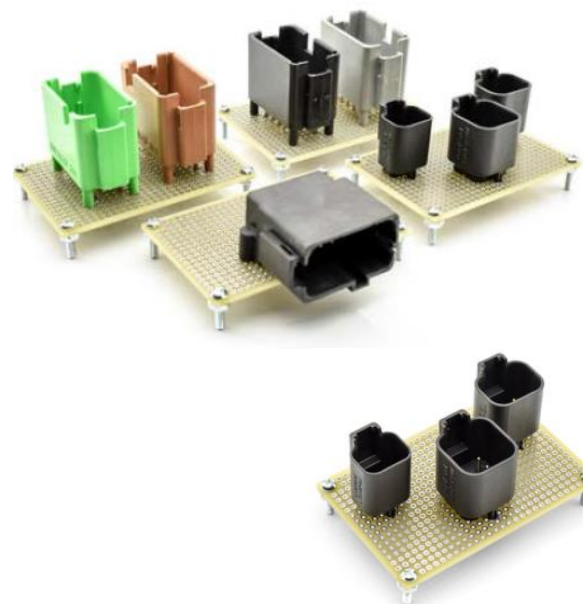
Presentation



AT SERIES BOARD | LOK

Amphenol Sine Systems Corporation (SINE)

APPROVAL UL	NA
COMPATIBLE/COMPETITOR SERIES	DT
CONTACT TYPE	CRIMP, PCB
CONTACT WIRE GAUGE	AWG12-18/,75-2.5MM ²
EMI OPTION	NO
HARDWARE COUPLING MECHANISM	PUSH-PULL
HARDWARE NR INSERT ARRANGEMENTS	2,3,4,6,8,12,13,18
IP RATING MATED	IP67
MATERIAL SHELL	PLASTIC
MATING CYCLES	100
MAX CURRENT RATING ACCORDING TO EN91684 (AT 20C)	13A
OPERATING TEMPERATURE	-40°C TO +125°C



Catalog



Presentation



ATHD®

Amphenol Industrial Operation (AIO-ATZ)

APPROVAL UL	NO
COMPATIBLE/COMPETITOR SERIES	DTHD
CONTACT TYPE	SOLID
CONTACT WIRE GAUGE	AWG8-12/2,5-10MM ²
EMI OPTION	NO
HARDWARE COUPLING MECHANISM	LOCKING LATCH
HARDWARE NR INSERT ARRANGEMENTS	2
IP RATING MATED	IP67 / IP69K
MATERIAL SHELL	PLASTIC
MATING CYCLES	100
MAX CURRENT RATING ACCORDING TO EN91684 (AT 20C)	120A
OPERATING TEMPERATURE	-55C TO +125C



Catalog



Presentation



ATC & AHD (J1939 STANDARD)

Amphenol Industrial Operation (AIO-ATZ) & Amphenol Sine Systems Corporation (SINE)

APPROVAL UL	NO
COMPATIBLE/COMPETITOR SERIES	HD10
CONTACT TYPE	SOLID & S&F
CONTACT WIRE GAUGE	AWG16-18/,75-1,5MM ²
EMI OPTION	NO
HARDWARE COUPLING MECHANISM	REVERSE BAYONET
HARDWARE NR INSERT ARRANGEMENTS	5
IP RATING MATED	IP68
MATERIAL SHELL	PLASTIC
MATING CYCLES	100
MAX CURRENT RATING ACCORDING TO EN91684 (AT 20C)	22A
OPERATING TEMPERATURE	-55C TO +125C



DURA|MATE® AHDP

Amphenol Sine Systems Corporation (SINE)

APPROVAL UL	NO
COMPATIBLE/COMPETITOR SERIES	HDP20
CONTACT TYPE	SOLID & S&F
CONTACT WIRE GAUGE	AWG4-22/,5-16MM ²
EMI OPTION	NO
HARDWARE COUPLING MECHANISM	BAYONET
HARDWARE NR INSERT ARRANGEMENTS	16
IP RATING MATED	IP67 / IP69K
MATERIAL SHELL	PLASTIC
MATING CYCLES	100
MAX CURRENT RATING ACCORDING TO EN91684 (AT 20C)	135A
OPERATING TEMPERATURE	-55C TO +125C



Catalog



Presentation



DURA|MATE® AHDM

Amphenol Sine Systems Corporation (SINE)

APPROVAL UL	NO
COMPATIBLE/COMPETITOR SERIES	HD30
CONTACT TYPE	SOLID & S&F
CONTACT WIRE GAUGE	AWG4-22/,5-16MM ²
EMI OPTION	NO
HARDWARE COUPLING MECHANISM	BAYONET
HARDWARE NR INSERT ARRANGEMENTS	16
IP RATING MATED	IP67 / IP69K
MATERIAL SHELL	METAL
MATING CYCLES	100
MAX CURRENT RATING ACCORDING TO EN91684 (AT 20C)	135A
OPERATING TEMPERATURE	-55C TO +125C



DURA|MATE® ISOBUS

Amphenol Sine Systems Corporation (SINE)

APPROVAL UL	NO
COMPATIBLE/COMPETITOR SERIES	ISO 11783-2
CONTACT TYPE	SOLID & S&F
CONTACT WIRE GAUGE	AWG8-12/2,5-10MM ²
EMI OPTION	NO
HARDWARE COUPLING MECHANISM	BAYONET
HARDWARE NR INSERT ARRANGEMENTS	ISOBUS
IP RATING MATED	IP67 / IP69K
MATERIAL SHELL	PLASTIC
MATING CYCLES	100
MAX CURRENT RATING ACCORDING TO EN91684 (AT 20C)	60A
OPERATING TEMPERATURE	-55C TO +125C



Catalog



Presentation

DT & VSS & ISOBUS & CPC SERIES

Amphenol Conec (ACON)

	DT04/DT06	VSS 1.5	ISOBUS	CPC
APPROVAL UL	NO	NO	NO	NO
CONTACT TYPE	SOLID	S&F	SOLID	S&F
CONTACT WIRE GAUGE	0,75 mm ² /AWG18	0,75 mm ² /AWG18	ISOBUS STD	0.75 mm ² AND 1.5 mm ²
EMI OPTION	NO	NO	NO	NO
HARDWARE COUPLING MECHANISM	SNAP	SNAP	BAJONET	BAJONET
HARDWARE NR INSERT ARRANGEMENTS	2-, 3-, 4-, 6-, 8-, 12 POS	2-, 3-, 4-, 5-, 6 POS.	9 POS ISOBUS	3-, 7-, 9 POS
HARDWARE TYPE PANEL RECEPTACLE	NO	NO	YES	NO
HARDWARE TYPE SQUARE FLANGE RECEPTACLE	NO	NO	NO	NO
NUMBER CABLE ENTRY	NA	NA	NA	NA
NUMBER CABLE EXIT	1,2	1,2	1,2	1,2
MAX CABLE DIAMETER ENTRY	NA	NA	NA	NA
MAX CABLE DIAMETER EXIT	9MM	8MM	17MM	11MM
IP RATING MATED	IP67/IP69K	IP67/IP69K	IP67/IP69K	IP67
MATERIAL SHELL	PLASTIC	PLASTIC	PLASTIC	PLASTIC
MATING CYCLES	100	10	100	10
MAX CURRENT RATING ACCORDING TO EN91684 (AT 20C)	8A	8A	60A	15A
OPERATING TEMPERATURE	-40 °C to 80 °C	-40 °C to 80 °C	-40 °C to 85 °C	-40 °C to 80 °C



JUNCTION SYSTEM TYPE S, M, L

Amphenol Conec (ACON)

	JUNCTION SYSTEM TYPE S	JUNCTION SYSTEM TYPE M	JUNCTION SYSTEM TYPE L
APPROVAL UL	NO	NO	NO
CONTACT TYPE	NA	NA	NA
CONTACT WIRE GAUGE	0.25 mm ² TO 2.5 mm ²	0.25 mm ² TO 2.5 mm ²	0.25 mm ² TO 2.5 mm ²
EMI OPTION	NO	NO	NO
DIMENSIONS (L x W x H mm)	66 x 30 x 15	66 x 40 x 15	76 x 55 x 22
NUMBER CABLE ENTRY	1,2	1,2,3	1,4
NUMBER CABLE EXIT	1,2	1,2,3	3,4
MAX CABLE DIAMETER ENTRY	8 MM	11 MM	8 AND 17MM
MAX CABLE DIAMETER EXIT	8 MM	8 MM	8 AND 13MM
IP RATING MATED	IP67	IP67	IP67
MATERIAL SHELL	PLASTIC OVERMOLDED	PLASTIC	PLASTIC
MATING CYCLES	NA	NA	NA
MAX CURRENT RATING ACCORDING TO EN91684 (AT 20C)	NA	NA	NA
OPERATING TEMPERATURE	-40 °C to 80 °C	-40 °C to 80 °C	-40 °C to 80 °C

SAMPLE JUNCTION SYSTEM TYPE L



JUNCTION SYSTEM TYPE S



JUNCTION SYSTEM TYPE M



JUNCTION SYSTEM TYPE L



Catalog



Presentation



TRU|LOC®

Amphenol Industrial Operation (AIO-ATZ)

APPROVAL UL	YES
COMPATIBLE/COMPETITOR SERIES	
CONTACT TYPE	S&F
CONTACT WIRE GAUGE	AWG12-20/0,5-2,5MM ²
EMI OPTION	NO
HARDWARE COUPLING MECHANISM	LOCKING LATCH
HARDWARE NR INSERT ARRANGEMENTS	2,4,6
IP RATING MATED	IP67
MATERIAL SHELL	PLASTIC
MATING CYCLES	100
MAX CURRENT RATING ACCORDING TO EN91684 (AT 20C)	22A
OPERATING TEMPERATURE	-40°C TO +125°C



ECO|MATE®

Amphenol Tuchel Electronics Industrial (ATEI)

APPROVAL UL	YES
COMPATIBLE/COMPETITOR SERIES	
CONTACT TYPE	SOLID & S&F
CONTACT WIRE GAUGE	AWG12-18/,75-2,5MM ²
EMI OPTION	NO
HARDWARE COUPLING MECHANISM	THREADED
HARDWARE NR INSERT ARRANGEMENTS	2
IP RATING MATED	IP67
MATERIAL SHELL	PLASTIC
MATING CYCLES	500
MAX CURRENT RATING ACCORDING TO EN91684 (AT 20C)	40A
OPERATING TEMPERATURE	-40°C TO +125°C



Catalog



Presentation



PLASTIC CIRCULAR - RBL

Amphenol LTW Technology Co. (LTW)

APPROVAL UL	YES
CONTACT TYPE	S&F
CONTACT WIRE GAUGE	AWG12-24/0,25-4MM ²
EMI OPTION	NO
HARDWARE COUPLING MECHANISM	PUSH-LOCK
HARDWARE HOUSING TYPE	CIRCULAR
HARDWARE NR INSERT ARRANGEMENTS	35
IP RATING MATED	IP67
MATERIAL SHELL	PLASTIC
MATING CYCLES	250
MAX CURRENT RATING ACCORDING TO EN91684 (AT 20C)	20A
OPERATING TEMPERATURE	-40C TO +105C



Catalog



Presentation



CERES – CIRCULAR WATERPROOF

Amphenol LTW Technology Co. (LTW)

APPROVAL UL	YES
CONTACT TYPE	SOLID & S&F
CONTACT WIRE GAUGE	AWG14-26/0,14-2,5MM ²
EMI OPTION	YES
HARDWARE COUPLING MECHANISM	BAYONET & THREADED
HARDWARE HOUSING TYPE	CIRCULAR
HARDWARE NR INSERT ARRANGEMENTS	78
IP RATING MATED	P67
MATERIAL SHELL	PLASTIC
MATING CYCLES	2.000
MAX CURRENT RATING ACCORDING TO EN91684 (AT 20C)	20A
OPERATING TEMPERATURE	-40C TO +105C



Catalog



Presentation



ECO|MATE® C16-L/C16-3

Amphenol Tuchel Electronics Industrial (ATEI)

APPROVAL UL	YES
COMPATIBLE/COMPETITOR SERIES	
CONTACT TYPE	SOLID & S&F
CONTACT WIRE GAUGE	AWG10-18/,75-6,0MM ²
EMI OPTION	NO
HARDWARE COUPLING MECHANISM	BAYONET
HARDWARE NR INSERT ARRANGEMENTS	13
IP RATING MATED	IP65
MATERIAL SHELL	PLASTIC
MATING CYCLES	500
MAX CURRENT RATING ACCORDING TO EN91684 (AT 20C)	40A
OPERATING TEMPERATURE	-40°C TO +125°C



IP67 POWER BAYONET

Amphenol Conec (ACON)

APPROVAL UL	NO
CONTACT TYPE	SOLID
HARDWARE COUPLING MECHANISM	BAYONET
HARDWARE NR INSERT ARRANGEMENTS	2 AND 2+PE
HARDWARE SHELL SIZES - TYPES	1
HARDWARE TYPE PANEL RECEPTACLE	YES
IP RATING MATED	IP67
MATERIAL SHELL	PLASTIC
MAX CURRENT RATING ACCORDING TO EN91684 (AT 20C)	30 A
OPERATING TEMPERATURE	-40 °C TO 100 °C

IP67 POWER BAYONET
PANEL MOUNTED RECEPTACLE



IP67 POWER BAYONET
CABLE CONNECTOR SHORT



IP67 POWER BAYONET
CABLE CONNECTOR



PROTECTION CAPS



POWER|MATE

Amphenol PCD Shenzhen (APCD)

APPROVAL UL	NA
CONTACT TYPE	SOLID
CONTACT WIRE GAUGE	AWG4-16/1,5-16MM ²
EMI OPTION	NO
HARDWARE COUPLING MECHANISM	PUSH LOCK
HARDWARE HOUSING TYPE	CIRCULAR
HARDWARE NR INSERT ARRANGEMENTS	6
IP RATING MATED	IP67
MATERIAL SHELL	PLASTIC
MATING CYCLES	500
MAX CURRENT RATING ACCORDING TO EN91684 (AT 20C)	80A
OPERATING TEMPERATURE	-40°C TO +120°C



Catalog



Presentation



AMPHE | PRB

Amphenol Industrial Operation (AIO-ATZ)

APPROVAL UL	YES
CONTACT TYPE	SOLID
CONTACT WIRE GAUGE	AWG4-12/2,5-16MM ²
EMI OPTION	NO
HARDWARE COUPLING MECHANISM	REVERSE BAYONET
HARDWARE HOUSING TYPE	CIRCULAR
HARDWARE NR INSERT ARRANGEMENTS	3
IP RATING MATED	IP67
MATERIAL SHELL	PLASTIC
MATING CYCLES	100
MAX CURRENT RATING ACCORDING TO EN91684 (AT 20C)	120A
OPERATING TEMPERATURE	-40°C TO +125°C



AMPHE | GTR

Amphenol Industrial Operation (AIO-ATZ)

APPROVAL UL	YES
CONTACT TYPE	SOLID
CONTACT WIRE GAUGE	AWG4-8/6-25MM ²
EMI OPTION	NO
HARDWARE COUPLING MECHANISM	REVERSE BAYONET
HARDWARE HOUSING TYPE	CIRCULAR
HARDWARE NR INSERT ARRANGEMENTS	2
IP RATING MATED	IP67
MATERIAL SHELL	PLASTIC
MATING CYCLES	100
MAX CURRENT RATING ACCORDING TO EN91684 (AT 20C)	160
OPERATING TEMPERATURE	-40°C TO +125°C



Catalog



Presentation



FICX - CABLE JOINERS

Amphenol LTW Technology Co. (LTW)



SUR|LOK PLUS®

Amphenol Industrial Operation (AIO-ATZ)

1 CONTACT HOUSING	YES
CONTACT (RADSOK®) SIZE	3,6-10,3MM
CONTACT WIRE SIZE	6-95MM ²
HARDWARE IP2X ON RECEPTACLE SIDE	YES
HARDWARE IP67 IN MATED CONDITION	YES
HARDWARE WITH CPA	NO
HARDWARE WITH EMI OPTION	NO
HARDWARE WITH RIGHT ANGLE CABLE EXIT	YES
HARDWARE WITH STRAIGHT CABLE EXIT	NO
OPERATING CURRENT AT 80C	70-300A
OPERATING VOLTAGE	1000V (1500V OPTIONAL)
TERMINATION PLUG	CRIMP



Catalog



Presentation



SUR|LOK PLUS® EMI

Amphenol Industrial Operation (AIO-ATZ)

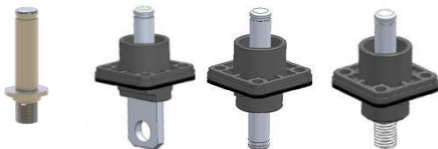
NUMBER OF POLES MAX	1
CONTACT (RADSOK®) SIZE	8,0MM
CONTACT WIRE SIZE	35-70MM ²
HARDWARE IP2X ON RECEPTACLE SIDE	YES
HARDWARE IP69K IN MATED CONDITION	YES
HARDWARE WITH CPA	YES
HARDWARE WITH EMI OPTION	YES
HARDWARE WITH HVIL CONTACTS	YES
HARDWARE WITH SECONDARY LOCK	YES
OPERATING CURRENT AT 80C	200A
OPERATING TEMPERATURE RATING	-40/+125C
OPERATING VOLTAGE	1000V



RAD|LOK™

Amphenol Guangzhou Electronics Co. Ltd. (GEC)

1 CONTACT HOUSING	YES
CONTACT (RADSOK®) SIZE	3,6-14MM
CONTACT WIRE SIZE	10-150MM ²
HARDWARE IP2X ON RECEPTACLE SIDE	NO
HARDWARE IP67 IN MATED CONDITION	NO
HARDWARE WITH CPA	NO
HARDWARE WITH EMI OPTION	NO
HARDWARE WITH RIGHT ANGLE CABLE EXIT	YES
HARDWARE WITH STRAIGHT CABLE EXIT	NO
OPERATING CURRENT AT 80C	80-500A
OPERATING VOLTAGE	1000V
TERMINATION PLUG	CRIMP



Catalog



Presentation



HVSP

Amphenol PCD Shenzhen (APCD)

1 CONTACT HOUSING	YES
CONTACT (RADSOK®) SIZE	6,0-10,0MM
CONTACT WIRE SIZE	25-70MM ²
HARDWARE IP2X ON RECEPTACLE SIDE	YES
HARDWARE IP67 IN MATED CONDITION	YES
HARDWARE WITH CPA	YES
HARDWARE WITH EMI OPTION	NO
HARDWARE WITH RIGHT ANGLE CABLE EXIT	YES
HARDWARE WITH STRAIGHT CABLE EXIT	NO
OPERATING CURRENT AT 80C	110A - 200A
OPERATING VOLTAGE	1000V
TERMINATION PLUG	CRIMP



Catalog



Presentation

ACTIVE PIN | LOK®

Amphenol Tuchel Electronics Industrial (ATEI)

1 CONTACT HOUSING	YES
CONTACT (RADSOK®) SIZE	8,0MM
CONTACT WIRE SIZE	35-50MM ²
HARDWARE IP2X ON RECEPTACLE SIDE	NO
HARDWARE IP67 IN MATED CONDITION	NO
HARDWARE WITH CPA	YES
HARDWARE WITH EMI OPTION	NO
HARDWARE WITH RIGHT ANGLE CABLE EXIT	YES
HARDWARE WITH STRAIGHT CABLE EXIT	NO
OPERATING CURRENT AT 80C	200A
OPERATING VOLTAGE	100V
TERMINATION PLUG	CRIMP



Catalog



Presentation



E-POWER

Amphenol Industrial Operations (AIO-ATZ)

NUMBER OF POLES MAX	2-3
CONTACT (RADSOK®) SIZE	8,0-11,1MM
CONTACT WIRE SIZE	35-95MM ²
HARDWARE IP2X ON RECEPTACLE SIDE	YES
HARDWARE IP69K IN MATED CONDITION	YES
HARDWARE WITH CPA	YES
HARDWARE WITH EMI OPTION	YES
HARDWARE WITH HVIL CONTACTS	YES
HARDWARE WITH SECONDARY LOCK	SCREW
OPERATING CURRENT AT 80C	400A
OPERATING TEMPERATURE RATING	-40/+125C
OPERATING VOLTAGE	1000V



Catalog



Presentation



POWER | LOK™

Amphenol Guangzhou Electronics Co. Ltd. (GEC)

NUMBER OF POLES MAX	1-4
CONTACT (RADSOK®) SIZE	4-14MM
CONTACT WIRE SIZE	2,5-150MM ²
HARDWARE IP2X ON RECEPTACLE SIDE	YES
HARDWARE IP69K IN MATED CONDITION	YES
HARDWARE WITH CPA	NO
HARDWARE WITH EMI OPTION	YES
HARDWARE WITH HVIL CONTACTS	YES
HARDWARE WITH SECONDARY LOCK	YES
OPERATING CURRENT AT 80C	40A-500A
OPERATING TEMPERATURE RATING	-40/+125C
OPERATING VOLTAGE	1000V



POWER|LOK™ G2

Amphenol Guangzhou Electronics Co. Ltd. (GEC)

NUMBER OF POLES MAX	1-4
CONTACT (RADSOK®) SIZE	4-14MM
CONTACT WIRE SIZE	2,5-120MM ²
HARDWARE IP2X ON RECEPTACLE SIDE	YES
HARDWARE IP69K IN MATED CONDITION	YES
HARDWARE WITH CPA	YES
HARDWARE WITH EMI OPTION	YES
HARDWARE WITH HVIL CONTACTS	YES
HARDWARE WITH SECONDARY LOCK	YES
OPERATING CURRENT AT 80C	40A-500A
OPERATING TEMPERATURE RATING	-40/+125C
OPERATING VOLTAGE	1000V



Catalog



Presentation

UPC

Amphenol Industrial Operation (AIO-ATZ)

NUMBER OF POLES MAX	2-3
CONTACT (RADSOK®) SIZE	9,1-14MM
CONTACT WIRE SIZE	35-150MM ²
HARDWARE IP2X ON RECEPTACLE SIDE	YES
HARDWARE IP69K IN MATED CONDITION	YES
HARDWARE WITH CPA	YES
HARDWARE WITH EMI OPTION	YES
HARDWARE WITH HVIL CONTACTS	YES
HARDWARE WITH SECONDARY LOCK	YES
OPERATING CURRENT AT 80C	450A
OPERATING TEMPERATURE RATING	-40/+125C
OPERATING VOLTAGE	1000V



Catalog



Presentation



HVSL

Amphenol PCD Shenzhen (APCD)

NUMBER OF POLES MAX	2-6
CONTACT (RADSOK®) SIZE	3,6MM-12,0MM
CONTACT WIRE SIZE	2,5-95MM ²
HARDWARE IP2X ON RECEPTACLE SIDE	YES
HARDWARE IP69K IN MATED CONDITION	YES
HARDWARE WITH CPA	YES
HARDWARE WITH EMI OPTION	YES
HARDWARE WITH HVIL CONTACTS	YES
HARDWARE WITH SECONDARY LOCK	YES
OPERATING CURRENT AT 80C	20A-350A
OPERATING TEMPERATURE RATING	-40/+125C
OPERATING VOLTAGE	1000V



Catalog



Presentation



HVSLs

Amphenol PCD Shenzhen (APCD)

NUMBER OF POLES MAX	2-3
CONTACT (RADSOK®) SIZE	6,0-8,0MM
CONTACT WIRE SIZE	16-50MM ²
HARDWARE IP2X ON RECEPTACLE SIDE	YES
HARDWARE IP69K IN MATED CONDITION	YES
HARDWARE WITH CPA	YES
HARDWARE WITH EMI OPTION	YES
HARDWARE WITH HVIL CONTACTS	YES
HARDWARE WITH SECONDARY LOCK	NO
OPERATING CURRENT AT 80C	120A-200A
OPERATING TEMPERATURE RATING	-40/+125C
OPERATING VOLTAGE	1000V



E-POWER | LITE

Amphenol Industrial Operation (AIO-ATZ)

NUMBER OF POLES MAX	6
CONTACT (RADSOK®) SIZE	3,6-5,7MM
CONTACT WIRE SIZE	2,5-25MM ²
HARDWARE IP2X ON RECEPTACLE SIDE	YES
HARDWARE IP69K IN MATED CONDITION	YES
HARDWARE WITH CPA	YES
HARDWARE WITH EMI OPTION	YES
HARDWARE WITH HVIL CONTACTS	YES
HARDWARE WITH SECONDARY LOCK	YES
OPERATING CURRENT AT 80C	70A-120A
OPERATING TEMPERATURE RATING	-40/+125C
OPERATING VOLTAGE	800V



Catalog



Presentation



HVPT & HVPT-B

Amphenol PCD Shenzhen (APCD)

NUMBER OF POLES MAX	1-3
CONTACT (RADSOK®) SIZE	NA
CONTACT WIRE SIZE	25-70MM ²
HARDWARE IP2X ON RECEPTACLE SIDE	NA
HARDWARE IP69K IN MATED CONDITION	YES
HARDWARE WITH CPA	NA
HARDWARE WITH EMI OPTION	YES
HARDWARE WITH HVIL CONTACTS	NA
HARDWARE WITH SECONDARY LOCK	NA
OPERATING CURRENT AT 80C	NA
OPERATING TEMPERATURE RATING	-40/+125C
OPERATING VOLTAGE	1000V



Catalog



Presentation



HVPC

Amphenol PCD Shenzhen (APCD)

NUMBER OF POLES MAX	1-2
CONTACT (RADSOK®) SIZE	6-8MM
CONTACT WIRE SIZE	25-50MM ²
HARDWARE IP2X ON RECEPTACLE SIDE	YES
HARDWARE IP69K IN MATED CONDITION	YES
HARDWARE WITH CPA	NA
HARDWARE WITH EMI OPTION	YES
HARDWARE WITH HVIL CONTACTS	NA
HARDWARE WITH SECONDARY LOCK	NA
OPERATING CURRENT AT 80C	200A
OPERATING TEMPERATURE RATING	-40/+125C
OPERATING VOLTAGE	1000V



Catalog



Presentation



HVBI & HVG

Amphenol PCD Shenzhen (APCD)

NUMBER OF POLES MAX	1
CONTACT (RADSOK®) SIZE	6,0MM
CONTACT WIRE SIZE	16-25MM ²
HARDWARE IP2X ON RECEPTACLE SIDE	YES
HARDWARE IP69K IN MATED CONDITION	YES
HARDWARE WITH CPA	YES
HARDWARE WITH EMI OPTION	YES
HARDWARE WITH HVIL CONTACTS	YES
HARDWARE WITH SECONDARY LOCK	NO
OPERATING CURRENT AT 80C	110A
OPERATING TEMPERATURE RATING	-40/+125C
OPERATING VOLTAGE	1000V



Catalog



Presentation



HVG – EX|40X

Amphenol PCD Shenzhen (APCD)

NUMBER OF POLES MAX	3+2
CONTACT (RADSOK®) SIZE	6,0MM
CONTACT WIRE SIZE	2,5-10MM ²
HARDWARE IP2X ON RECEPTACLE SIDE	OPTIONAL
HARDWARE IP69K IN MATED CONDITION	YES
HARDWARE WITH CPA	YES
HARDWARE WITH EMI OPTION	YES
HARDWARE WITH HVIL CONTACTS	OPTIONAL
HARDWARE WITH SECONDARY LOCK	NO
OPERATING CURRENT AT 80C	UP TO 50A
OPERATING TEMPERATURE RATING	-40/+125C
OPERATING VOLTAGE	1000V



Catalog



Presentation



Amphe | Push-Pull

Amphenol Industrial Operation (AIO-ATZ)

NUMBER OF POLES MAX	1
CONTACT (RADSOK®) SIZE	5,7-14MM
CONTACT WIRE SIZE	16-120MM ²
HARDWARE IP2X ON RECEPTACLE SIDE	YES OPTIONAL
HARDWARE IP69K IN MATED CONDITION	YES
HARDWARE WITH CPA	NO
HARDWARE WITH EMI OPTION	YES
HARDWARE WITH HVIL CONTACTS	NO
HARDWARE WITH SECONDARY LOCK	NO
OPERATING CURRENT AT 80C	120-500A
OPERATING TEMPERATURE RATING	-40/+125C
OPERATING VOLTAGE	600V



Catalog



Presentation



HVCO CHARGER CONNECTORS – COMBO CCS1

Amphenol PCD Shenzhen (APCD)



Catalog



Presentation



HVCO CHARGER CONNECTORS – COMBO CCS2

Amphenol PCD Shenzhen (APCD)



HVCO CHARGER CONNECTORS – IEC

Amphenol PCD Shenzhen (APCD)



Catalog



Presentation



HVCO CHARGER CONNECTORS – GBT

Amphenol PCD Shenzhen (APCD)



Catalog

Presentation



MSD | MINI – MANUAL SERVICE DISCONNECT

Amphenol PCD Shenzhen (APCD)



MSD – MANUAL SERVICE DISCONNECT

Amphenol PCD Shenzhen (APCD)



MSD|XL – MANUAL SERVICE DISCONNECT

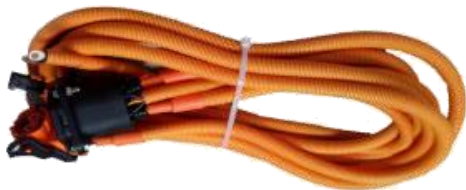
Amphenol PCD Shenzhen (APCD)



EV ASSEMBLIES

Amphenol PCD Shenzhen (APCD) & Amphenol Technology Shenzhen (AIO-ATS)

Amphenol Industrial Operation (AIO-ATZ) & Amphenol Tuchel Electronics Industrial (ATEI)



Catalog



Presentation



PDU – POWER DISTRIBUTION UNIT

Amphenol PCD Shenzhen (APCD) & Amphenol Technology Shenzhen (AIO-ATS)



Catalog



Presentation



ARMOR IPX

Amphenol Sine Systems Corporation (SINE)

CONTACT TYPE	PCB-CRIMP
CONTACT WIRE GAUGE	AWG12-20/0,5-2,5MM ²
EMI OPTION	NO
HARDWARE COUPLING MECHANISM	PUSH-PULL
IP RATING MATED	IP67
MATERIAL SHELL	THERMOPLASTIC UL94-V0
MATING CYCLES	100
MAX CURRENT RATING ACCORDING TO EN91684 (AT 20C)	13A
OPERATING TEMPERATURE	-40°C TO +125°C
COMPATIBLE SERIES	TE EEC BOXES
HARDWARE COUPLING MECHANISM	PUSH-PULL
PIN COUNT	FROM 12 TO 48



Catalog



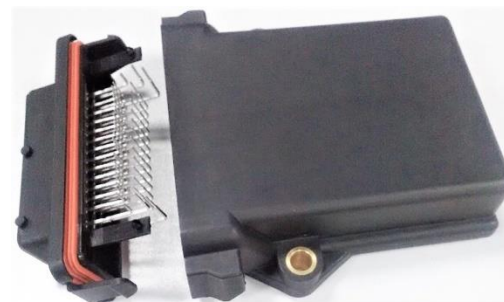
Presentation



ECU HEADER

Amphenol Industrial Operation (AIO-ATZ)

CONTACT TYPE	PCB-CRIMP
CONTACT WIRE GAUGE	AWG12-20/0,5-2,5MM ²
EMI OPTION	NO
HARDWARE COUPLING MECHANISM	PUSH-PULL
IP RATING MATED	IP67
MATERIAL SHELL	THERMOPLASTIC UL94-V0
MATING CYCLES	100
MAX CURRENT RATING ACCORDING TO EN91684 (AT 20C)	13A
OPERATING TEMPERATURE	-40°C TO +125°C
COMPATIBLE SERIES	TE EEC BOXES
HARDWARE COUPLING MECHANISM	PUSH-PULL
PIN COUNT	FROM 12 TO 48



Catalog



Presentation



BSM – BATTERY SWAP MODULES

Amphenol PCD Shenzhen (APCD)



HEV 070&080

Amphenol PCD Shenzhen (APCD)



Catalog



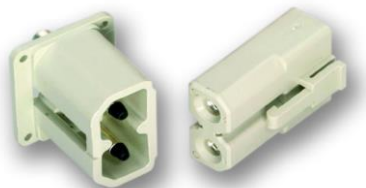
Presentation



AMPHE|PD®

Amphenol Industrial Operation (AIO-ATZ)

APPROVAL UL	YES
COMPATIBLE/COMPETITOR SERIES	NA
CONTACT TYPE	SOLID
CONTACT WIRE GAUGE	AWG4-10/6-16MM
EMI OPTION	NO
HARDWARE COUPLING MECHANISM	PUSH-PULL
HARDWARE NR INSERT ARRANGEMENTS	2
IP RATING MATED	IP40
MATERIAL SHELL	PLASTIC
MATING CYCLES	100
MAX CURRENT RATING ACCORDING TO EN91684 (AT 20C)	160A
OPERATING TEMPERATURE	-40°C TO +100°C



Catalog



Presentation



HC32

Amphenol Guangzhou Electronics Co. Ltd. (GEC)

APPROVAL UL	NA
COMPATIBLE/COMPETITOR SERIES	
CONTACT TYPE	SOLID & S&F
CONTACT WIRE GAUGE	AWG16-22/,25-1,5MM ²
EMI OPTION	NO
HARDWARE COUPLING MECHANISM	LEVER +CPA
HARDWARE NR INSERT ARRANGEMENTS	32
IP RATING MATED	IP67
MATERIAL SHELL	PLASTIC
MATING CYCLES	100
MAX CURRENT RATING ACCORDING TO EN91684 (AT 20C)	13A
OPERATING TEMPERATURE	-40°C TO +125°C



Catalog



Presentation



LVRC

Amphenol PCD Shenzhen (APCD)

APPROVAL UL	NA
COMPATIBLE/COMPETITOR SERIES	
CONTACT TYPE	SOLID & S&F
CONTACT WIRE GAUGE	AWG16-22/,25-1,5MM ²
EMI OPTION	NO
HARDWARE COUPLING MECHANISM	PUSH-PULL
HARDWARE NR INSERT ARRANGEMENTS	26, 35
IP RATING MATED	IP67
MATERIAL SHELL	PLASTIC
MATING CYCLES	100
MAX CURRENT RATING ACCORDING TO EN91684 (AT 20C)	13A
OPERATING TEMPERATURE	-40°C TO +125°C



Catalog



Presentation



GROUND|MATE® & BOARD|MATE®

Amphenol Tuchel Electronics Industrial (ATEI)



Catalog

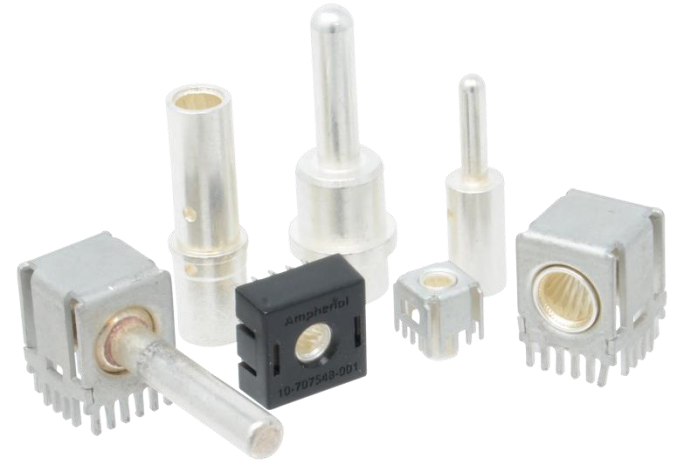


Presentation



BOARD | POWER

Amphenol Industrial Operation (AIO-ATZ)



Catalog



Presentation



VENT

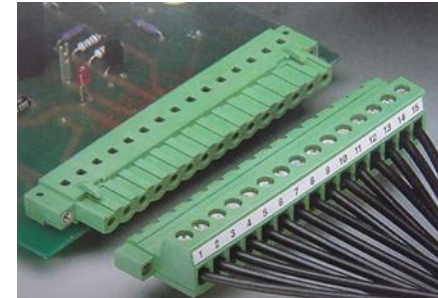
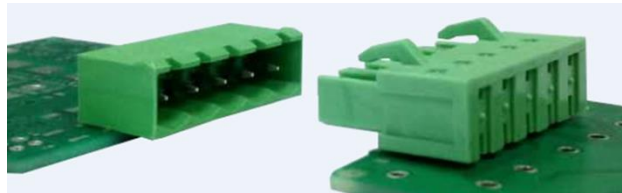
Amphenol LTW Technology Co. (LTW)

IP RATING MATED	IP68-IP6K9K
MATERIAL	NYLON, S-STEEL, ZINC
COLOUR OPTIONS	GREY, BLACK, SILVER
OPERATING TEMPERATURE	-40°C TO +125°C
MEMBRANE	HYDRO & OLEOPHOBIC



TERMINAL BLOCKS

Amphenol Anytek (AATK) and Amphenol PCD Shenzhen (APCD)



Catalog



Presentation



SSL

Amphenol LTW Technology Co. (LTW)



Catalog



Presentation



SMART CARD READERS – C700

Amphenol Tuchel Electronics Industrial (ATEI)



D-SUB AND HOOD AND HOUSING

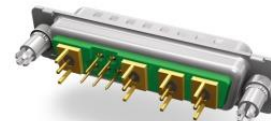
Amphenol Conec (ACON)

	D-SUB STANDARD/HD	D-SUB COMBO	D-SUB FILTER	D-SUB FILTER COMBO	D-SUB HOODS
APPROVAL UL	YES	YES	YES	YES	YES
CONTACT TYPE	SOLID & S&F	SOLID	SOLID	SOLID	NA
CONTACT WIRE GAUGE	AWG20-28	AWG8-28	AWG20-28	AWG8-18	NA
CAPACITY			370pF UP TO 1300 pF	1,3nF UP TO 100 nF	
HARDWARE COUPLING MECHANISM	SNAPLOCK & THREADED	SNAPLOCK & THREADED	SNAPLOCK & THREADED	SNAPLOCK & THREADED	SNAPLOCK & THREADED
HARDWARE NR INSERT ARRANGEMENTS	9-50 STANDARD AND 15-78 FOR HD	24 INSERTS	9-50 STANDARD AND 15-78 FOR HD	2W2C, 3W3S, 3W3C, 5W5S, 8W8S	ALL SIZES
IP RATING MATED	NA	NA	NA	NA	NA
MATERIAL SHELL	METAL	METAL	METAL	METAL	METAL / PLASTIC
MATING CYCLES	500	500	500	500	NA
MAX CURRENT RATING ACCORDING TO EN91684 (AT 20C)	UP TO 7,5A	UP TO 40A	UP TO 7,5A	UP TO 65A	NA
OPERATING TEMPERATURE	-55 °C to 125 °C	-55 °C to 125 °C	-25 °C to 105 °C	-25 °C to 105 °C	-55 °C to 125 °C

D-SUB STANDARD/HD



COMBINATION D-SUB



FILTER D-SUB



FILTER COMBINATION D-SUB



D-SUB HOODS



D-SUB CONTACTS



Catalog



Presentation



D-SUB WATERPROOF

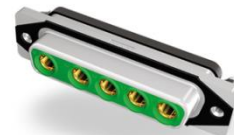
Amphenol LTW Technology Co. (LTW) & Amphenol Conec (ACON)

APPROVAL UL	YES
COMPATIBLE/COMPETITOR SERIES	
CONTACT TYPE	S&F PT SOLID
CONTACT WIRE GAUGE	AWG16-22/,25-1,5MM ²
EMI OPTION	YES
HARDWARE COUPLING MECHANISM	SCREWS
HARDWARE NR INSERT ARRANGEMENTS	8
IP RATING MATED	IP68
MATERIAL SHELL	PLASTIC
MATING CYCLES	1.000
MAX CURRENT RATING ACCORDING TO EN91684 (AT 20C)	30A
OPERATING TEMPERATURE	-40C TO +105C

IP67 D-SUB STANDARD/HD



IP67 COMBINATION D-SUB



IP67 FILTER D-SUB



IP67 D-SUB Hoods



Catalog



Catalog



Presentation



USB WATERPROOF

Amphenol LTW Technology Co. (LTW) & Amphenol Conec (ACON)

APPROVAL UL	YES
COMPATIBLE/COMPETITOR SERIES	
CONTACT TYPE	USB
CONTACT WIRE GAUGE	USB
EMI OPTION	YES
HARDWARE COUPLING MECHANISM	REVERSE BAYONET
HARDWARE NR INSERT ARRANGEMENTS	6
IP RATING MATED	IP68
MATERIAL SHELL	PLASTIC
MATING CYCLES	1.000
MAX CURRENT RATING ACCORDING TO EN91684 (AT 20C)	20A
OPERATING TEMPERATURE	-40C TO +105C

IP67 MINI USB



IP67 USB CABLE CONNECTOR



IP67 USB DUALPORT



IP67 USB PANEL MOUNTED RECEPTACLE



IP67 USB PANEL MOUNTED RECEPTACLE



IP67 USB SOLDER TERMINATION



USB | TYPE C WATERPROOF

Amphenol LTW Technology Co. (LTW)



Catalog



Presentation



FIBER OPTICS WATERPROOF

Amphenol LTW Technology Co. (LTW) & Amphenol Conec (ACON)

APPROVAL UL	YES
COMPATIBLE/COMPETITOR SERIES	NA
CONTACT TYPE	FIBER LC
CONTACT WIRE GAUGE	FIBER LC
EMI OPTION	NO
HARDWARE COUPLING MECHANISM	REVERSE BAYONET
HARDWARE NR INSERT ARRANGEMENTS	1
IP RATING MATED	IP68
MATERIAL SHELL	PLASTIC
MATING CYCLES	1.000
MAX CURRENT RATING ACCORDING TO EN91684 (AT 20C)	NA
OPERATING TEMPERATURE	-40C TO +105C



IP67 FIBER OPTIC
CABLE CONNECTOR



IP67 FIBER OPTIC
PANEL MOUNTED CONNECTOR



IP67 FIBER OPTIC
PANEL MOUNTED CONNECTOR



IP67 FIBER OPTIC
PANEL MOUNTED RECEPTACLE



IP67 FIBER OPTIC
ADAPTERS



IP67 FIBER OPTIC
PROTECTION CAPS



RJ-45 WATERPROOF

Amphenol LTW Technology Co. (LTW) & Amphenol Conec (ACON)

APPROVAL UL	YES
COMPATIBLE/COMPETITOR SERIES	
CONTACT TYPE	RJ45
CONTACT WIRE GAUGE	RJ45
EMI OPTION	YES
HARDWARE COUPLING MECHANISM	REVERSE BAYONET
HARDWARE NR INSERT ARRANGEMENTS	1
IP RATING MATED	IP68
MATERIAL SHELL	PLASTIC
MATING CYCLES	1.000
MAX CURRENT RATING ACCORDING TO EN91684 (AT 20C)	7A
OPERATING TEMPERATURE	-40C TO +105C

IP67 RJ45 CABLE CONNECTOR



IP67 RJ45 PANEL MOUNTED RECEPTACLE



IP67 RJ45 PANEL MOUNTED RECEPTACLE



IP67 RJ45 PANEL MOUNTED RECEPTACLE



IP67 RJ45 PANEL MOUNTED RECEPTACLE



IP67 RJ45 PANEL MOUNTED RECEPTACLE



STARLINE

Amphenol Oil & Gas Technologies (AOGT)

APPROVAL ATEX & IECEx	NO
COMPETITION	EATON
CONTACT TYPE	SOLID
CONTACT WIRE GAUGE	1,0-500MM ²
COUPLING MECHANISM	THREAD
EMI OPTION	YES
EAC	YES
HARDWARE NR INSERT ARRANGEMENTS	80
IP RATING MATED	IP67, IP68
MATING CYCLES	1.000
MAX CURRENT RATING ACCORDING TO EN91684 (AT 20C)	1500A
OPERATING TEMPERATURE	-60°C TO + 125°C



Catalog



Presentation

STARLINE | EX

Amphenol Oil & Gas Technologies (AOGT)

APPROVAL ATEX & IECEx	YES
COMPETITION	EATON
CONTACT TYPE	SOLID + FO
CONTACT WIRE GAUGE	1,0-500MM ²
COUPLING MECHANISM	THREAD
EMI OPTION	YES
EAC	YES
HARDWARE NR INSERT ARRANGEMENTS	80
IP RATING MATED	IP67, IP68
MATING CYCLES	1.000
MAX CURRENT RATING ACCORDING TO EN91684 (AT 20C)	1500A
OPERATING TEMPERATURE	-60°C TO + 125°C



Catalog



Presentation



STARLINE | EX FIBER

Amphenol Oil & Gas Technologies (AOGT)

APPROVAL ATEX & IECEX	YES
COMPETITION	EATON
CONTACT TYPE	SOLID + FO
CONTACT WIRE GAUGE	0,75-2,5MM ²
COUPLING MECHANISM	THREAD
EMI OPTION	YES
EAC	YES
HARDWARE NR INSERT ARRANGEMENTS	80
IP RATING MATED	IP67, IP68
MATING CYCLES	1.000
MAX CURRENT RATING ACCORDING TO EN91684 (AT 20C)	1500A
OPERATING TEMPERATURE	-60°C TO + 125°C



Catalog



Presentation



STARLINE | EX HERMETIC

Amphenol Oil & Gas Technologies (AOGT)

APPROVAL ATEX & IECEX	YES
COMPETITION	NA
CONTACT TYPE	SOLID
CONTACT WIRE GAUGE	1,0-500MM ²
COUPLING MECHANISM	THREAD
EMI OPTION	YES
EAC	YES
HARDWARE NR INSERT ARRANGEMENTS	10
IP RATING MATED	IP67, IP68
MATING CYCLES	1.000
MAX CURRENT RATING ACCORDING TO EN91684 (AT 20C)	1500A
OPERATING TEMPERATURE	-60°C TO + 125°C



Catalog



Presentation



HDE ZONE 1

Amphenol Oil & Gas Technologies (AOGT)

APPROVAL ATEX & IECEX	YES
COMPETITION	VANTAGE (HUBBELL)
CONTACT TYPE	SOLID
CONTACT WIRE GAUGE	1,0-500MM ²
COUPLING MECHANISM	THREAD
EMI OPTION	OPTIONAL
EAC	YES
HARDWARE NR INSERT ARRANGEMENTS	16
IP RATING MATED	IP67, IP68
MATING CYCLES	1.000
MAX CURRENT RATING ACCORDING TO EN91684 (AT 20C)	450
OPERATING TEMPERATURE	-60°C TO + 125°C



Catalog



Presentation



AMPHE|EX

Amphenol Oil & Gas Technologies (AOGT)

APPROVAL ATEX & IECEX	YES
COMPETITION	NA
CONTACT TYPE	SOLID + RJ45 + FO
CONTACT WIRE GAUGE	0,25-4MM ²
COUPLING MECHANISM	THREAD
EMI OPTION	OPTIONAL
IEC	YES
HARDWARE NR INSERT ARRANGEMENTS	39
IP RATING MATED	IP67, IP68
MATING CYCLES	500
MAX CURRENT RATING ACCORDING TO EN91684 (AT 20C)	41A
OPERATING TEMPERATURE	-60°C TO + 125°C



Catalog



Presentation



NEPTUNE

Amphenol Oil & Gas Technologies (AOGT)

APPROVAL ATEX & IECEX	NO
COMPETITION	APPELTON
CONTACT TYPE	SOLID
CONTACT WIRE GAUGE	1,5-95MM ²
COUPLING MECHANISM	THREAD
EMI OPTION	NO
IEC	NO
HARDWARE NR INSERT ARRANGEMENTS	16
IP RATING MATED	IP67, IP68
MATING CYCLES	1.000
MAX CURRENT RATING ACCORDING TO EN91684 (AT 20C)	250A
OPERATING TEMPERATURE	-55°C TO + 110°C



Catalog



Presentation



AMPHE-PHASE

Amphenol Oil & Gas Technologies (AOGT)

APPROVAL ATEX & IECEX	NO
COMPETITION	CANNON
CONTACT TYPE	SOLID
CONTACT WIRE GAUGE	25-300MM ²
COUPLING MECHANISM	REVERSE BAYONET
EMI OPTION	NO
IEC	NO
HARDWARE NR INSERT ARRANGEMENTS	1
IP RATING MATED	IP67, IP68
MATING CYCLES	500
MAX CURRENT RATING ACCORDING TO EN91684 (AT 20C)	800A
OPERATING TEMPERATURE	-55°C TO + 110°C



Catalog



Presentation



KTK

Amphenol Oil & Gas Technologies (AOGT)



EX CABLE GLANDS

Amphenol Oil & Gas Technologies (AOGT)



EX-309

Amphenol Oil & Gas Technologies (AOGT)

APPROVAL ATEX & IECEX	YES
COMPETITION	STAHL
CONTACT TYPE	SOLID
CONTACT WIRE GAUGE	1,5-50MM ²
COUPLING MECHANISM	THREAD
EMI OPTION	NO
EAC	YES
HARDWARE NR INSERT ARRANGEMENTS	12
IP RATING MATED	IP67
MATING CYCLES	1.000
MAX CURRENT RATING ACCORDING TO EN91684 (AT 20C)	125
OPERATING TEMPERATURE	-50°C TO + 60°C



Catalog



Presentation



Amphenol
Industrial



R29 & R49

Amphenol Oil & Gas Technologies (AOGT)

APPROVAL ATEX & IECEX	NO
COMPETITION	NA
CONTACT TYPE	SOLID
CONTACT WIRE GAUGE	95-500MM ²
COUPLING MECHANISM	LOCKING CLIP
EMI OPTION	NO
EAC	NO
HARDWARE NR INSERT ARRANGEMENTS	10
IP RATING MATED	IP65
MATING CYCLES	2.000
MAX CURRENT RATING ACCORDING TO EN91684 (AT 20C)	1500A
OPERATING TEMPERATURE	-40°C TO + 105°C



Catalog



Presentation



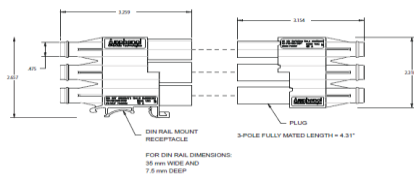
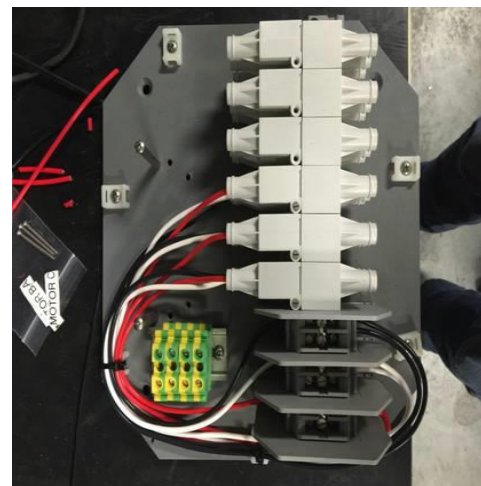
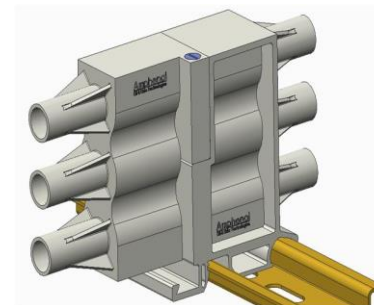
Amphenol
Industrial



ZEUS

Amphenol Oil & Gas Technologies (AOGT)

APPROVAL ATEX & IECEX	NO
COMPETITION	NA
CONTACT TYPE	SOLID
CONTACT WIRE GAUGE	2,5 - 10MM ²
COUPLING MECHANISM	SECURE PIN
EMI OPTION	NO
EAC	NO
HARDWARE NR INSERT ARRANGEMENTS	1
IP RATING MATED	
MATING CYCLES	500
MAX CURRENT RATING ACCORDING TO EN91684 (AT 20C)	80
OPERATING TEMPERATURE	-50°C TO + 60°C



Catalog

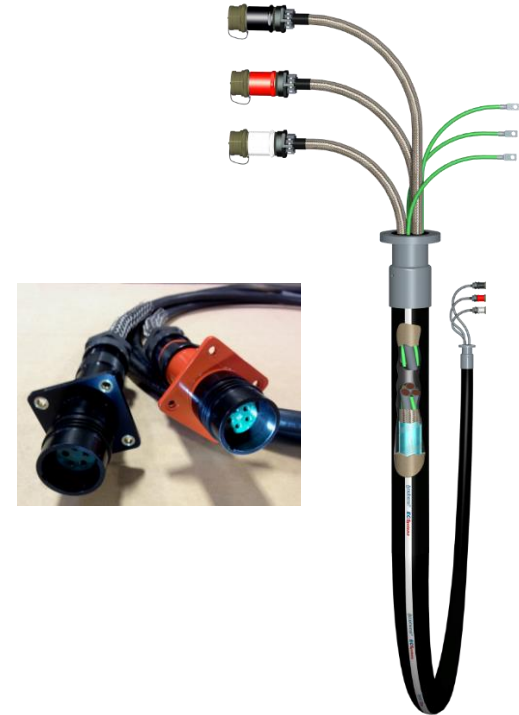


Presentation



SERVICE LOOP & ASSEMBLIES

Amphenol Oil & Gas Technologies (AOGT)



ASTP

Amphenol PCD Shenzhen (APCD)

APPROVAL EN45545-2	YES
COMPATIBLE/COMPETITOR SERIES	
CONTACT TYPE	SOLID
CONTACT WIRE GAUGE	0.3-4MM2
EMI OPTION	NO
HARDWARE COUPLING MECHANISM	LEVER
HARDWARE NR INSERT ARRANGEMENTS	34, 44, 50
IP RATING MATED	NO
MATERIAL SHELL	METAL
MATING CYCLES	500
MAX CURRENT RATING ACCORDING TO EN91684 (AT 20C)	23A
OPERATING TEMPERATURE	-55°C TO +125°C



Catalog



Presentation



ASPRC

Amphenol PCD Shenzhen (APCD)

APPROVAL EN45545-2	NA
COMPATIBLE/COMPETITOR SERIES	
CONTACT TYPE	SOLID
CONTACT WIRE GAUGE	0.3-0.75MM2
EMI OPTION	NO
HARDWARE COUPLING MECHANISM	PUSH-PULL
HARDWARE NR INSERT ARRANGEMENTS	52
IP RATING MATED	NO
MATERIAL SHELL	PLASTIC
MATING CYCLES	500
MAX CURRENT RATING ACCORDING TO EN91684 (AT 20C)	5A
OPERATING TEMPERATURE	-55°C TO +125°C



RFM – RACH FLOATING MODULAR

Amphenol PCD Shenzhen (APCD)

APPROVAL EN45545-2	NA
COMPATIBLE/COMPETITOR SERIES	
CONTACT TYPE	SOLID
CONTACT WIRE GAUGE	0.3-10MM2
EMI OPTION	NO
HARDWARE COUPLING MECHANISM	BOARD TO BOARD
HARDWARE NR INSERT ARRANGEMENTS	feb-70
IP RATING MATED	NO
MATERIAL SHELL	NA
MATING CYCLES	5.000
MAX CURRENT RATING ACCORDING TO EN91684 (AT 20C)	60A
OPERATING TEMPERATURE	-55°C TO +125°C



ASGP GROUND POWER

Amphenol PCD Shenzhen (APCD)



MRC

Amphenol PCD Shenzhen (APCD)

APPROVAL EN45545-2	NA
COMPATIBLE/COMPETITOR SERIES	
CONTACT TYPE	SOLID
CONTACT WIRE GAUGE	0.3-10MM2
EMI OPTION	NO
HARDWARE COUPLING MECHANISM	BOLT
HARDWARE NR INSERT ARRANGEMENTS	feb-70
IP RATING MATED	NO
MATERIAL SHELL	NA
MATING CYCLES	500
MAX CURRENT RATING ACCORDING TO EN91684 (AT 20C)	60A
OPERATING TEMPERATURE	-45°C TO +125°C



Catalog



Presentation



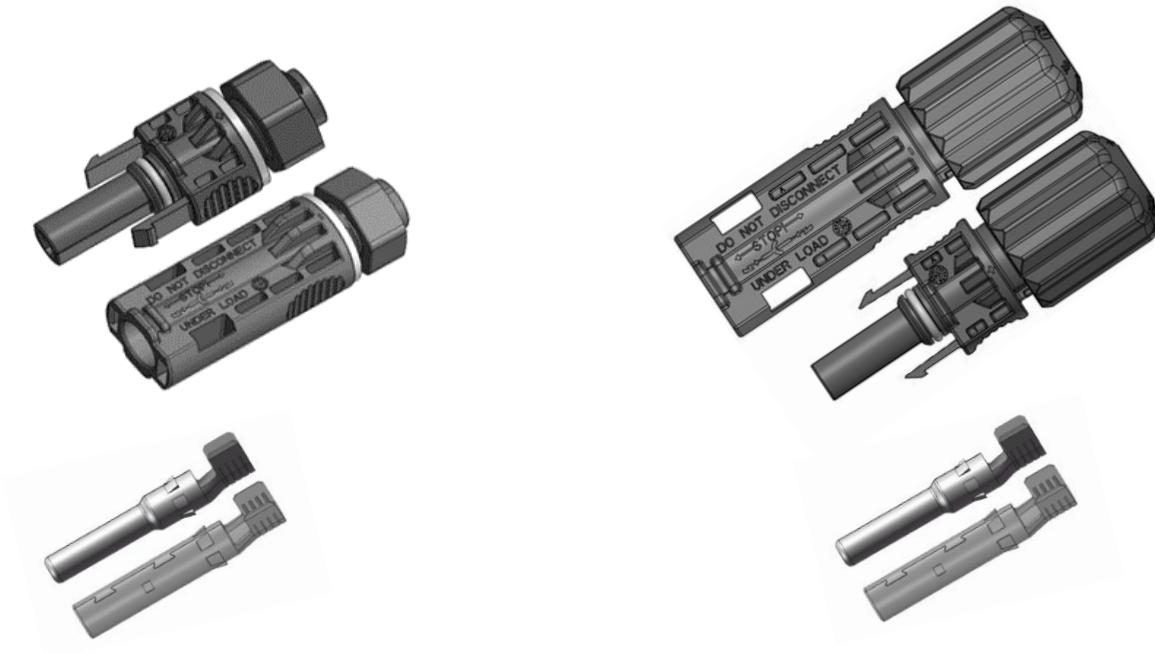
HELIOS H4®

Amphenol Technology Shenzhen (AIO-ATS)



H4 PLUS[®]

Amphenol Technology Shenzhen (AIO-ATS)



HELIOS® TOOLING

Amphenol Technology Shenzhen (AIO-ATS)



Crimp tool



Strip tool



Catalog



Presentation



HELIOS® MOLDED FUSE & ACCESSORIES

Amphenol Technology Shenzhen (AIO-ATS)



MOLDED & CONNETORIZED
FUSES AND DIODE



GROUNDING FEATURES



MOLDED SPLITTERS



HELIOS® POWERLINK PV CABLE

Amphenol Technology Shenzhen (AIO-ATS)



KEY FEATURES

- UL APPROVED 1000V – 2000V
- TUV APPROVED 1000V – 1500V
- USE-2 APPROVAL
- AWG8-AWG14 (2,5MM²-10MM²)



Catalog



Presentation



HELIOS® COMBINER BOX

Amphenol Technology Shenzhen (AIO-ATS)



PULSE | LOK®

Amphenol Alden Products (AAP)

APPROVAL UL	NO
CONTACT TYPE	SOLID – FO – RJ45
CONTACT WIRE GAUGE	AWG16-48
EMI OPTION	YES
HARDWARE COUPLING MECHANISM	REVERSE BAYONET
HARDWARE HOUSING TYPE	CIRCULAR
HARDWARE NR INSERT ARRANGEMENTS	14, 27, 52, 78, 1
IP RATING MATED	IP-67
MATERIAL SHELL	PLASTIC
MATING CYCLES	5.000
MAX CURRENT RATING ACCORDING TO EN91684 (AT 20C)	NA
OPERATING TEMPERATURE	-20C to 80C



Amphenol
Alden



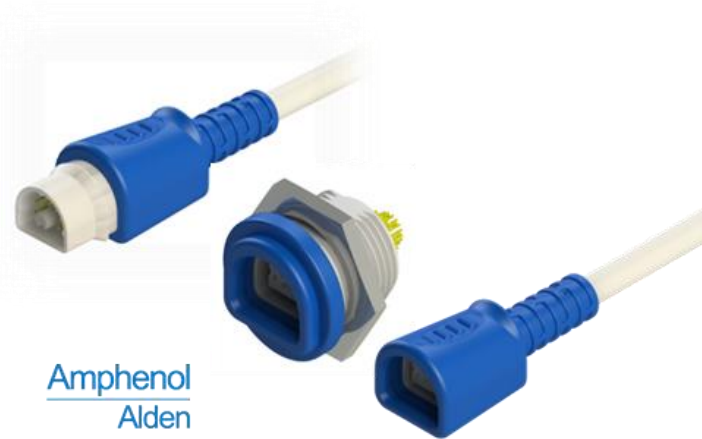
Amphenol
Alden



PULSE|ONE®

Amphenol Alden Products (AAP)

APPROVAL UL	NO
CONTACT TYPE	SOLID
CONTACT WIRE GAUGE	AWG16-26
EMI OPTION	NO
HARDWARE COUPLING MECHANISM	PUSH-PULL
HARDWARE HOUSING TYPE	CIRCULAR
HARDWARE NR INSERT ARRANGEMENTS	4
IP RATING MATED	IP67
MATERIAL SHELL	PLASTIC
MATING CYCLES	5.000
MAX CURRENT RATING ACCORDING TO EN91684 (AT 20C)	NA
OPERATING TEMPERATURE	-20C to 80C



Amphenol
Alden



HIGH-VOLTAGE

Amphenol Alden Products (AAP)



HIGH-DENSITY ASSEMBLIES & FINE PITCH CONNECTORS

Amphenol Alden Products (AAP)



Amphenol
Alden



Catalog



Presentation



DIAGNOSTIC & SURGICAL CABLE ASSEMBLIES

Amphenol Alden Products (AAP) & Amphenol DC Electronics (ADCE) & Amphenol Bernd Richter (ABRI)



AUDIO XLR AC

Amphenol Australia Pty Ltd (AAL)



AUDIO XLR AX PROFESSIONAL

Amphenol Australia Pty Ltd (AAL)



AUDIO MINI XLR

Amphenol Australia Pty Ltd (AAL)



ETHERNET XLR | NET

Amphenol Australia Pty Ltd (AAL)



AUDIO LOUNDSPEAKER SP & EP & AP SERIES

Amphenol Australia Pty Ltd (AAL)



AUDIO LOUNDSPEAKER HP & HPT SERIES

Amphenol Australia Pty Ltd (AAL)



AUDIO ¼" PLUG - JACK

Amphenol Australia Pty Ltd (AAL)



Catalog



Presentation

AUDIO 3,5MM PLUG – JACK & RCA

Amphenol Australia Pty Ltd (AAL)



Catalog



Presentation



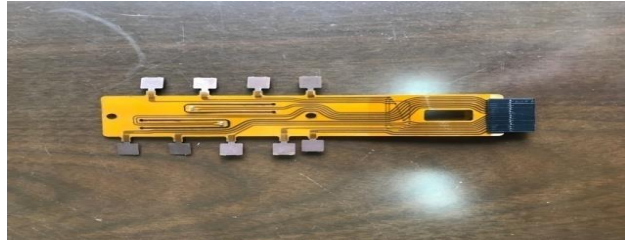
AMPHE | HST (HEATSHRINK TUBES)

Amphenol Industrial Operation (AIO-ATZ)



FLEXIBLE CIRCUITS & ASSEMBLIES

Guangzhou Amphenol Sincere Flex Co. Ltd. (GASF)



Product Application – HEV & Better



PCB+Cable design Solution



FPC Solution



Catalog



Presentation

BUSBAR: FLEXIBLE & RIGID

Amphenol Guangzhou Electronics Co. Ltd. (GEC)



The image features two white, futuristic robotic hands, one on the left and one on the right, each holding a thick, metallic cable. The hands are positioned as if they are shaking hands, symbolizing partnership. The background is a dark blue gradient with faint, out-of-focus images of industrial connectors. The central text is in large, white, bold, sans-serif font.

YOUR PARTNER FOR INTERCONNECT SOLUTIONS