



Amphenol

Industrial

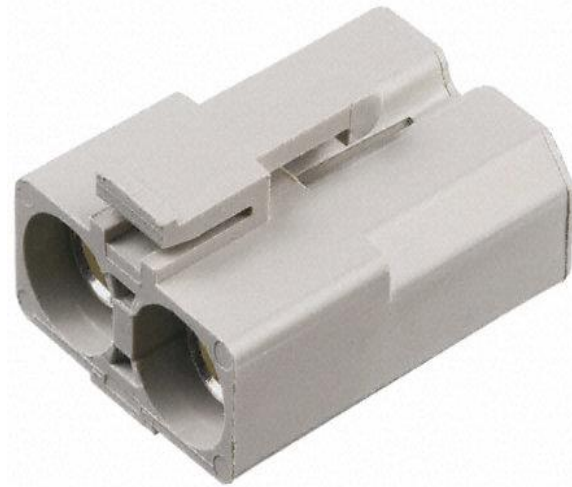
AMPHE|PD® SERIES

AMPHE-PD - 3,6MM RADSOK

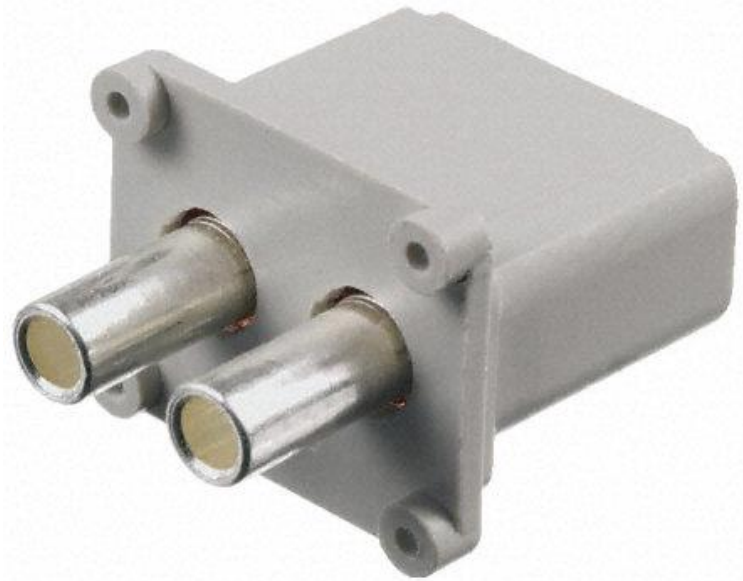
Contacts	2
Mounting cable side	Crimp
Mounting receptacle side	Crimp, PCB, RA PCB and busbar
UL voltage rating	250VDC
UL current rating	69A
CSA current rating	55A
Current rating	80A at 85C and 125A at 20C
Surge current	200A for 40s, 500A for 2s, 1000A for 0,2s
Operating voltage	600VDC (SPECIAL 1500V VERSION)
Dielectric withstand voltage	1500VDC
IP rating in mated condition	IP40
IP rating in unmated condition	IP2X (according to IEC60259)
Contact resistance	< 0,25 mΩ
Operating temperature IEC60512	-40 to +125C
Plastic material	UL-V0
Mating cycles	100
UL1977 and CSA	E115497



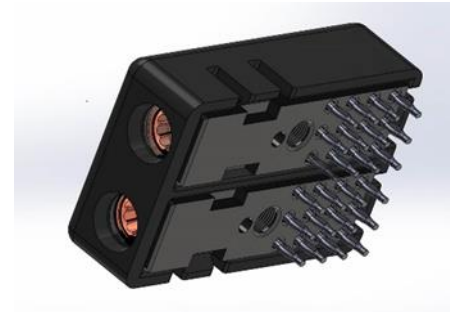
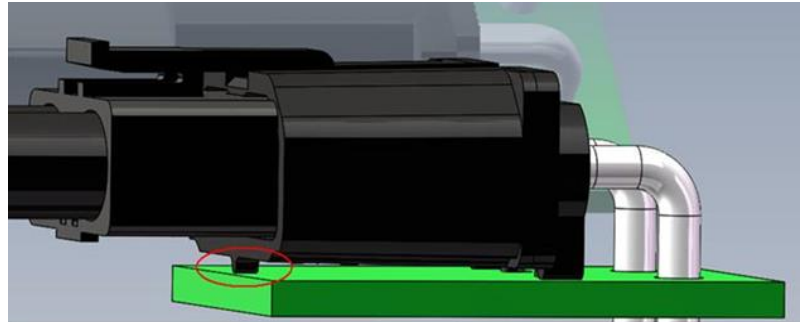
AMPHE-PD CRIMP PLUG 3,6MM



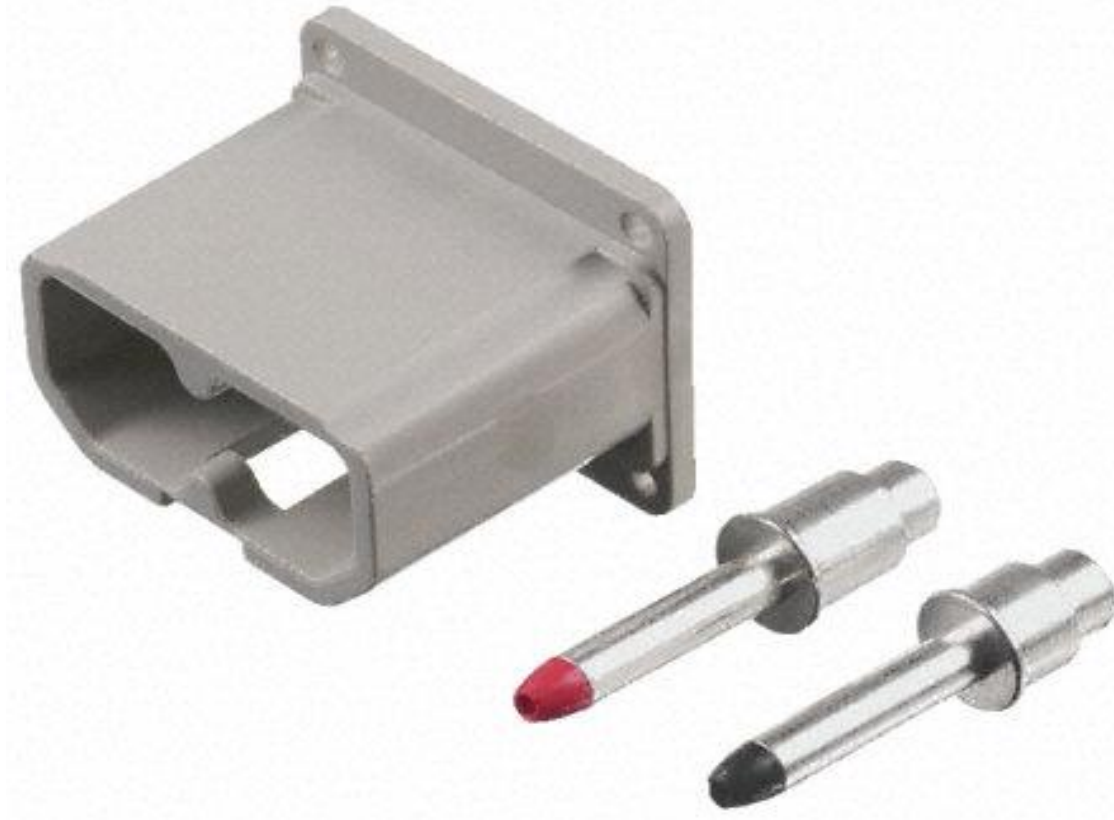
AMPHE-PD CRIMP RECEPTACLE 3,6MM



AMPHE-PD PCB RECEPTACLE 3,6MM



AMPHE-PD BUSBAR RECEPTACLE






AMPHE-PD 1500V CABLE TO CABLE



AMPHE-PD – 5,7MM RADSOK

Contacts	2
Mounting cable side	Crimp
Mounting receptacle side	Crimp
Current rating	120A at 85C and 150A at 20C
Surge current	200A for 500s, 500A for 25s, 1000A for 3s
Operating voltage	600VDC
Dielectric withstand voltage	1500VDC
IP rating in mated condition	IP40
IP rating in unmated condition	IP2X (according to IEC60259)
Contact resistance	< 0,25 mΩ
Operating temperature IEC60512	-40 to +125C
Plastic material	UL-V0
Mating cycles	100

AMPHE-PD PARTNUMBERS

AMPHENOL PN	DESCRIPTION	DESCRIPTION 2	PICTURE
C10-638974-000	AMPHE-PD CRIMP PLUG WHITE 3,6MM - AWG6	PLASTIC 2 WAY DC POWER PLUG 120A IEC61984/80A UL - IP40 MATED IP20 UNMATED	
C10-638975-000	AMPHE-PD BUSBAR RECEPTACLE WHITE 3,6MM	PLASTIC 2 WAY DC POWER RECEPTACLE 120A IEC61984/80A UL - IP40 MATED IP20 UNMATED	
C10-638976-000	AMPHE-PD CRIMP RECEPTACLE WHITE 3,6MM - AWG8	PLASTIC 2 WAY DC POWER RECEPTACLE 120A IEC61984/80A UL - IP40 MATED IP20 UNMATED	
C10-638977-000	AMPHE-PD PCB SOLDER RECEPTACLE WHITE 3,6MM	PLASTIC 2 WAY DC POWER RECEPTACLE 120A IEC61984/80A UL - IP40 MATED IP20 UNMATED	
C10-638978-000	AMPHE-PD PLUG HOUSING ONLY WHITE 3,6MM	PLASTIC 2 WAY DC POWER PLUG 120A IEC61984/80A UL - IP40 MATED IP20 UNMATED	
C10-638979-000	RECEPTACLE HOUSING ONLY WHITE 3,6MM	PLASTIC 2 WAY DC POWER RECEPTACLE 120A IEC61984/80A UL - IP40 MATED IP20 UNMATED	
C10-638982-001	RED TIP PIN BUSBAR CONTACT 3,6MM	NA	
C10-638983-001	BLACK TIP PIN BUSBAR CONTACT 3,6MM	NA	
C10-685188-000	AMPHE-PD CRIMP PLUG BLACK 5,7MM - AWG4	PLASTIC 2 WAY DC POWER PLUG 160A IEC61984/1200A UL - IP40 MATED IP20 UNMATED	
C10-747795-000	AMPHE-PD PCB RIGHT ANGLE SOLDER RECEPTACLE BLACK 3,6MM	PLASTIC 2 WAY DC POWER RECEPTACLE 120A IEC61984/80A UL - IP40 MATED IP20 UNMATED	
C10-752153-001	AMPHE-PD BUSBAR RECEPTACLE BLACK 3,6MM	PLASTIC 2 WAY DC POWER RECEPTACLE 120A IEC61984/80A UL - IP40 MATED IP20 UNMATED	
C10-752154-001	AMPHE-PD PCB SOLDER SMT LCP RECEPTACLE BLACK 3,6MM - HIGH TEMP	PLASTIC 2 WAY DC POWER RECEPTACLE 120A IEC61984/80A UL - IP40 MATED IP20 UNMATED	
C10-752155-000	AMPHE-PD PCB SOLDER RECEPTACLE BLACK 3,6MM	PLASTIC 2 WAY DC POWER RECEPTACLE 120A IEC61984/80A UL - IP40 MATED IP20 UNMATED	
C10-752156-000	AMPHE-PD CRIMP PLUG BLACK 3,6MM - AWG12	PLASTIC 2 WAY DC POWER PLUG 120A IEC61984/80A UL - IP40 MATED IP20 UNMATED	
C10-752157-000	AMPHE-PD CRIMP PLUG BLACK 3,6MM - AWG8	PLASTIC 2 WAY DC POWER PLUG 120A IEC61984/80A UL - IP40 MATED IP20 UNMATED	
C10-752158-000	AMPHE-PD CRIMP PLUG BLACK 3,6MM - AWG6	PLASTIC 2 WAY DC POWER PLUG 120A IEC61984/80A UL - IP40 MATED IP20 UNMATED	
C10-752159-000	AMPHE-PD CRIMP PLUG BLACK 3,6MM - AWG4	PLASTIC 2 WAY DC POWER PLUG 120A IEC61984/80A UL - IP40 MATED IP20 UNMATED	
C10-752162-000	AMPHE-PD CRIMP PLUG BLACK 5,7MM - AWG4	PLASTIC 2 WAY DC POWER PLUG 120A IEC61984/80A UL - IP40 MATED IP20 UNMATED	
C10-752163-000	AMPHE-PD PCB SOLDER RECEPTACLE BLACK 5,7MM	PLASTIC 2 WAY DC POWER RECEPTACLE 160A IEC61984/120A UL - IP40 MATED IP20 UNMATED	
C10-752160-000	AMPHE-PD CRIMP PLUG BLACK 3,6MM - AWG8 - 1500V SPECIAL	PLASTIC 2 WAY DC POWER PLUG 120A IEC61984/80A UL - IP40 MATED IP20 UNMATED	
C10-752161-000	AMPHE-PD CRIMP RECEPTACLE BLACK 3,6MM - AWG8 - 1500V SPECIAL	PLASTIC 2 WAY DC POWER RECEPTACLE 120A IEC61984/80A UL - IP40 MATED IP20 UNMATED	