

Amphenol Enabling the Electronics Revolution

Amphenol Sine Motion & Factory Automation series product introduction

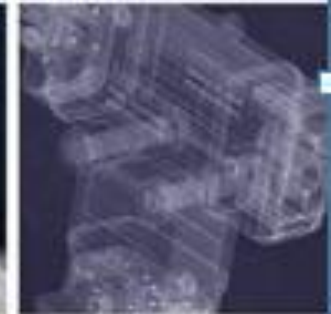
CONTENTS

1.AIIO China Overview

2.Product Introduction

3.Product Application
Introduction

MORE PRODUCT BETTER SERVICE GLOBAL CONNECTOR



AIIO CHINA - 2023

www.amphenol-sine.com.cn
www.amphenol-cz.cn

Amphenol

- **Founded** in 1932
- **World Headquarters:** Wallingford, Connecticut, USA
- 2022 Sales grew 16% \$12.60 Billion
- **91,000+** Employees, 140+ operating units
- **140 Operating units Worldwide, 53 WOFE (Wholly Owned Foreign Enterprise) in China**
- **Industries:** Industrial/Automotive . Mobile Devices / Networks . Information Technology . Broadband Communications . Data Communications Equipment Military/Commercial Aerospace



Amphenol Corporation is one of the world's leading producers of electronic and fiber optic connectors, cable and interconnect systems. Amphenol products are engineered and manufactured in the Americas, Europe, Asia and Africa and sold by a worldwide sales and marketing organization. Amphenol has a diversified presence as a leader in high growth areas of the interconnect market including: Military, Commercial Aerospace, Automotive, Broadband Communication, Industrial, Information Technology and Data Communications Equipment, Mobile Devices and Wireless Infrastructure.

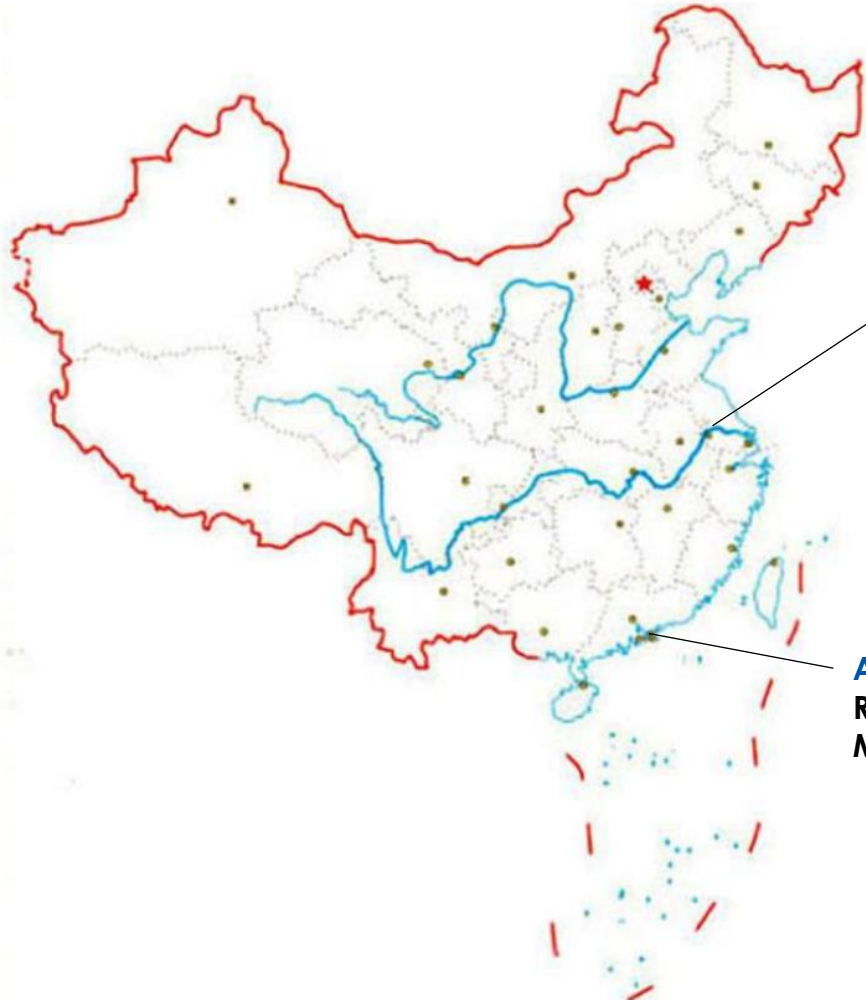
AIIO China

Amphenol International Industrial Operation China (AIIO China) including three business units -- SINE, CATI and AAL, the products are famous in domestic and abroad, are widely applied in Industrial automation, Electric vehicles, New energy storage, Solar & Wind power, Heavy equipment, Agricultural machinery, Railway transportation, Communication, Audio, Medical etc. AIIO China keeps 10%+ sales growth annually

- Gross area 10000 m²
- Area
 - Production 5000 m²
 - Warehouse 2000 m²
 - Others (office etc) 2000 m²
- Over 600+ employees
- 2022 sales amount \$98 million(Sine \$71M)



Location of Amphenol-TFC (Changzhou) Communication Equipment Co., Ltd



**Amphenol-TFC (Changzhou)
Communication Equipment Co., Ltd
Manufacturing center**

**Amphenol Sine Systems Shenzhen Office
Research & development (R&D) and
Marketing center**



Factory Automation

Our Factory Automation - Distributed Power and Control product lines were developed in response to the need for robust, streamlined and scalable products for use in robotic and material handling systems, such as: conveyors, sorting, automated storage and retrieval, packaging, overhead transport, palletizing and any other options imaginable.



Servo control - Motion series

The M Series™ MotionGrade™ DIN Style Connectors are ideally suited for advanced servo drive encoder feedback applications, packaging, robotic, printing, machine tool, medical and automation environments where control signal transmission or power are required in a robust and compact delivery system.



Threaded connectors

- 6, 7, 8, 9, 12, 15, 16, 17, 18 and 19 positions available
- MA Series: 7A~28A; 63V ~630V; 18-26AWG
- MB Series: 0.5A~30A; 30V ~630V; 14-26AWG
- MC Series: 30A~75A; 250V ~630V; 8-18AWG
- M17 Series: 3.6A; 63V; 22-30AWG
- Fixed rear insertion design
- Mixed power and signal arrangements
- Extraction tools required
- UL1977. ROHS Compliant



Custom cable assembly-M23 & M40

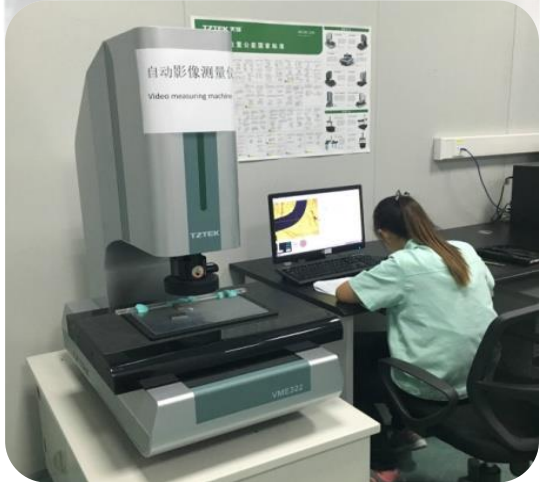


Custom Ethernet Cable Assembly Solutions

M12 & M22



Workplace in Changzhou & Shenzhen



Laboratory Test Equipment 3-1



Voltage drop tester



Temperature rise test equipment

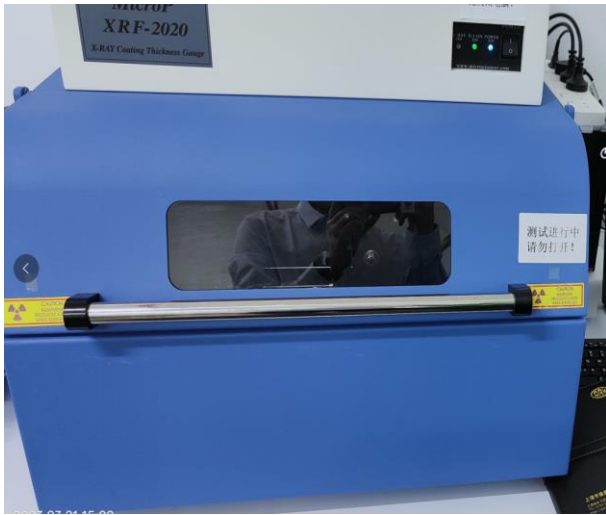


Dielectric strength tester



Low level resistance tester

Laboratory Test Equipment 3-2



Film thickness measurement



Thermal shock test equipment



Constant temperature and Humidity equipment

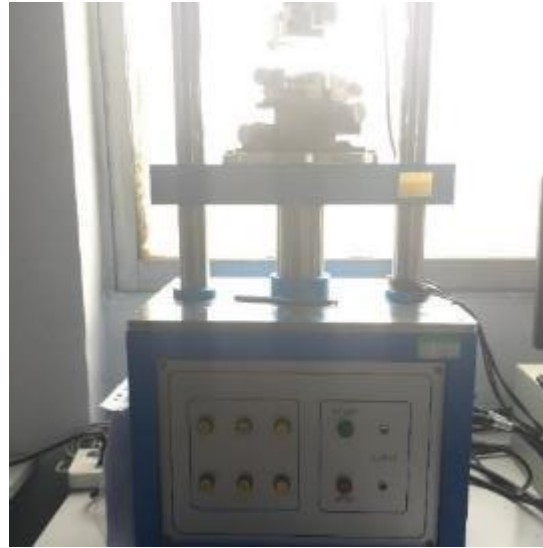


high-temperature oven

Laboratory Test Equipment 3-3



Tensile tester



Lifetime tester



Impact testing equipment



Vibration testing equipment

Applications of Motion series



INDUSTRIAL



ON-MACHINE



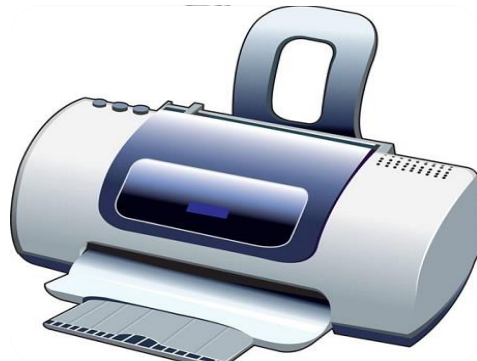
PACKAGING MACHINERY



DISTRIBUTED POWER



MOTION CONTROL



Printer



MEDICAL



COMMUNICATIONS

Factory Automation success story

- **Country:** China/USA/Germany
- **Application:** Power/control power/servo system
- **Product:** PowerBoss Lite/Mini/ Motion Cable Assy

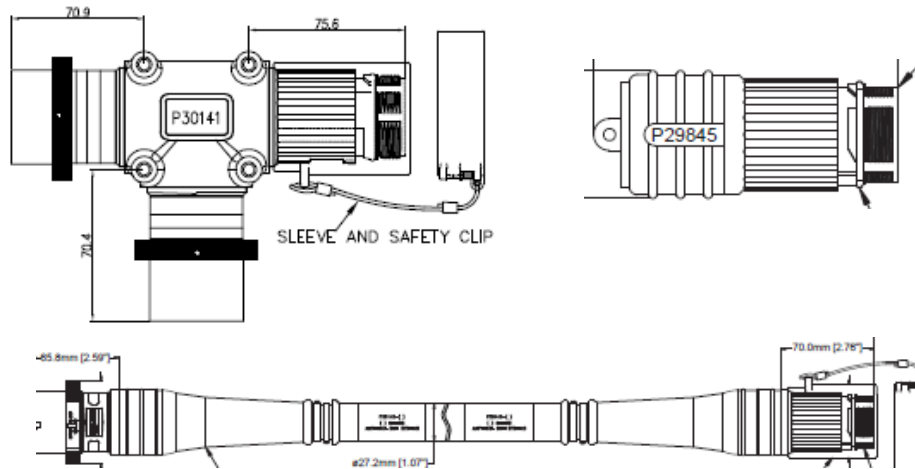


Factory Automation success story

- **Country:** China
- **Application:** GA/Painting Factory
- **Product:** PowerBoss Lite/ControlBoss/Motion Cable Assy



Factory Automation success story

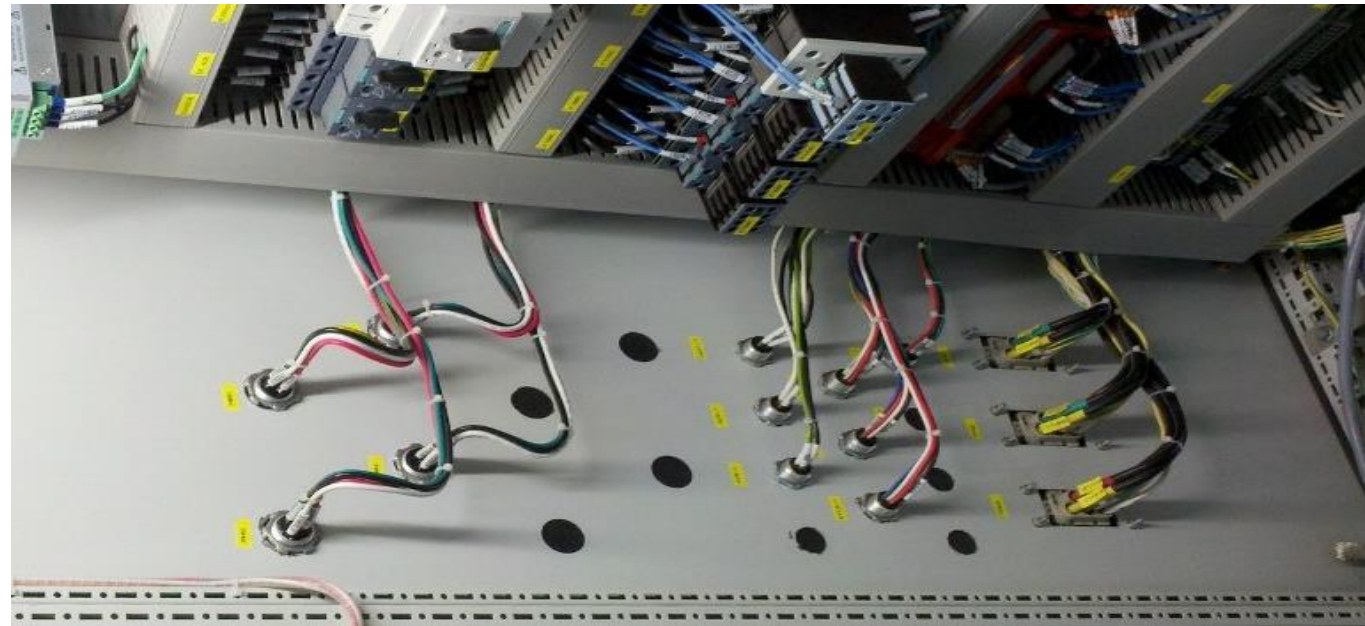


- **Country:** Thailand
- **Project:** Power supply transmission
- **Product:** M40 Assy~P29845/P30141/P30142-M*/P80614-M*



Factory Automation success story

- **Country:** China
- **Project:** Power Distribution Cabinet
- **Product:** Panel cable Harness



Servo control success story

- **Country:** China
- **Application:** Servo Motor/Encoder
- **Product:** Motion Cable Assy



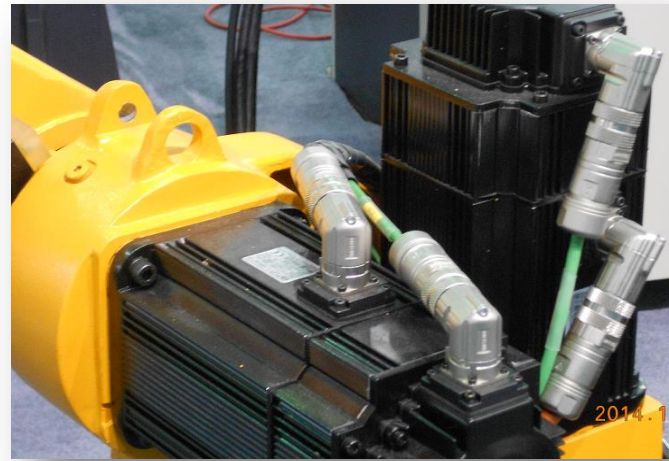
Servo control success story

- **Country:** China
- **Application:** VFD
- **Product:** M23 standard series



Servo control success story

- **Country:** China/North America
- **Application:** Robot/AGV
- **Product:** M23 standard series

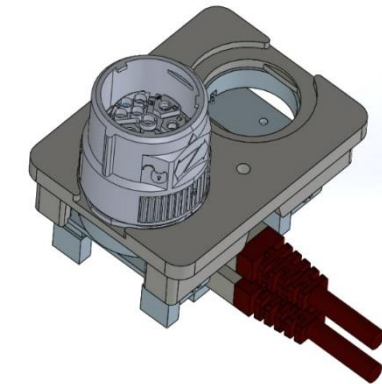


Servo control success story

- **Country:** China
- **Application:** Servo Motors
- **Product:** M23 Hybrid DMC



- **Country:** North America
- **Application:** Power/Control for Welding Systems
- **Product:** M23 connector and cable assembly



Quality System Certification



IATF 16949



**ISO 9001 &
ISO 14001**



AIIO China Main customers



RENAULT



北汽集团
BAIC GROUP



上汽集团



CATL

E-POW 亿能电子

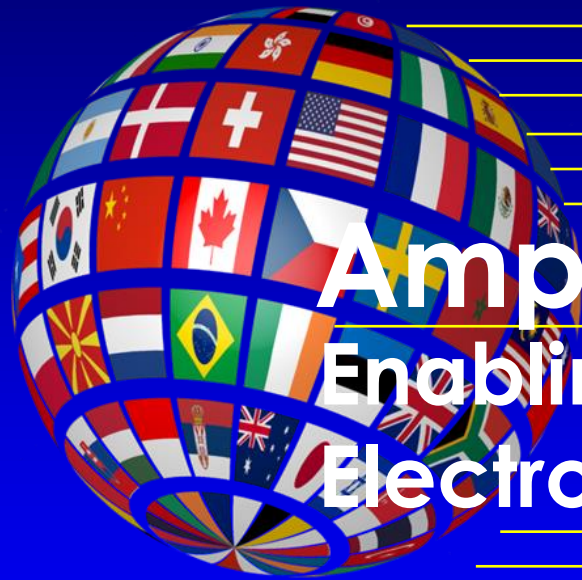


KOMATSU



AIO China Main customers





Amphenol
Enabling the
Electronics Revolution