

Amphenol

Enabling the Electronics Revolution

Amphenol Corporation

THE 2ND LARGEST INTERCONNECT COMPANY IN THE WORLD

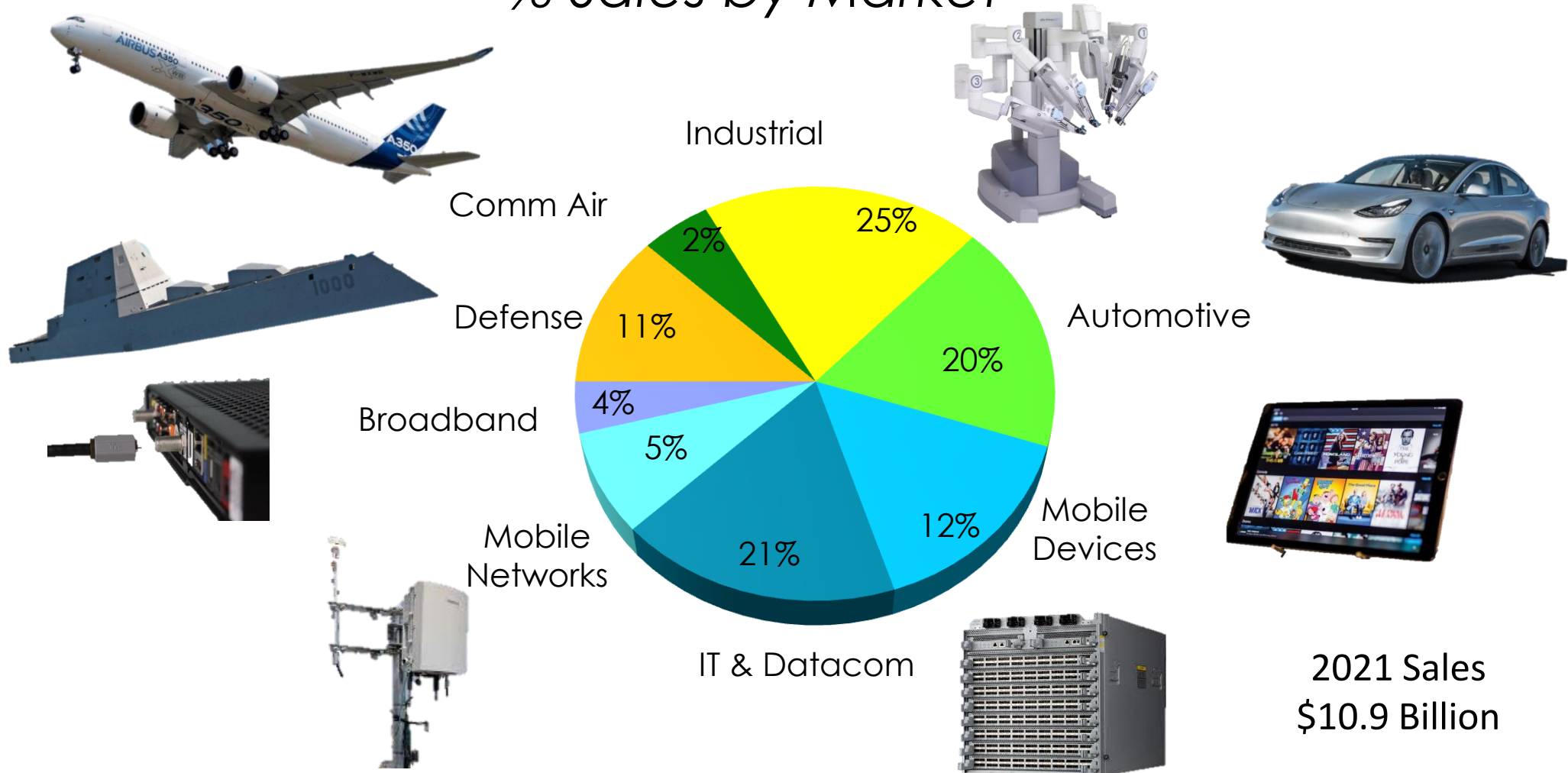
- Amphenol Corporation was founded in 1932, Chicago. The 2nd largest interconnect company in the world, Head office is in Connecticut.
- 1991 listed on NYSE. Because of its perfect performance, Feb 10th 2006 was named as “Amphenol Day”.
- More than 88,000 employees worldwide.
- Total sales 2021: US**\$10.9** billion



R. Adam Norwitt
President and Chief Executive Officer

Market Leader in Interconnect

% Sales by Market



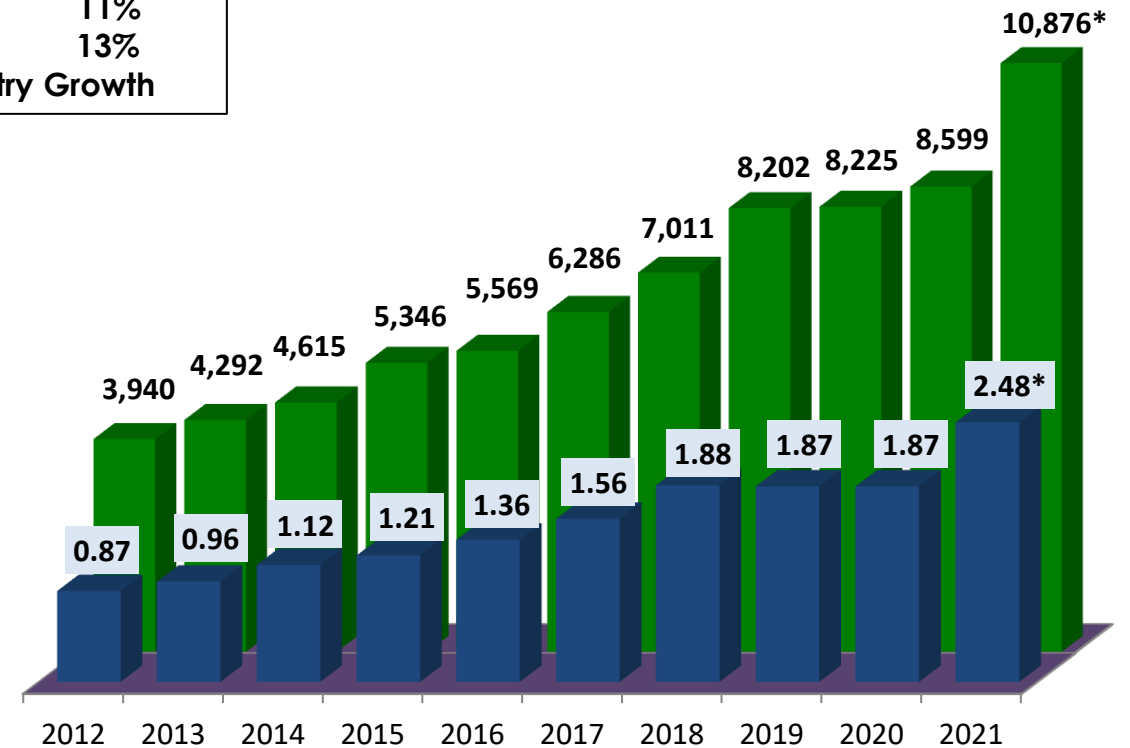
2021 Sales
\$10.9 Billion

Excellent Record of Achievements

- Industry leading growth for over a decade
- Industry leading operating profit margins in all business cycles
- Strong cash flow generation
- Successful acquisition program in consolidating industry

10 Year CAGR	
Sales	11%
EPS	13%
>2X Industry Growth	

Net Sales (\$ in millions)
Adjusted Diluted EPS (\$) ⁽¹⁾ ⁽²⁾

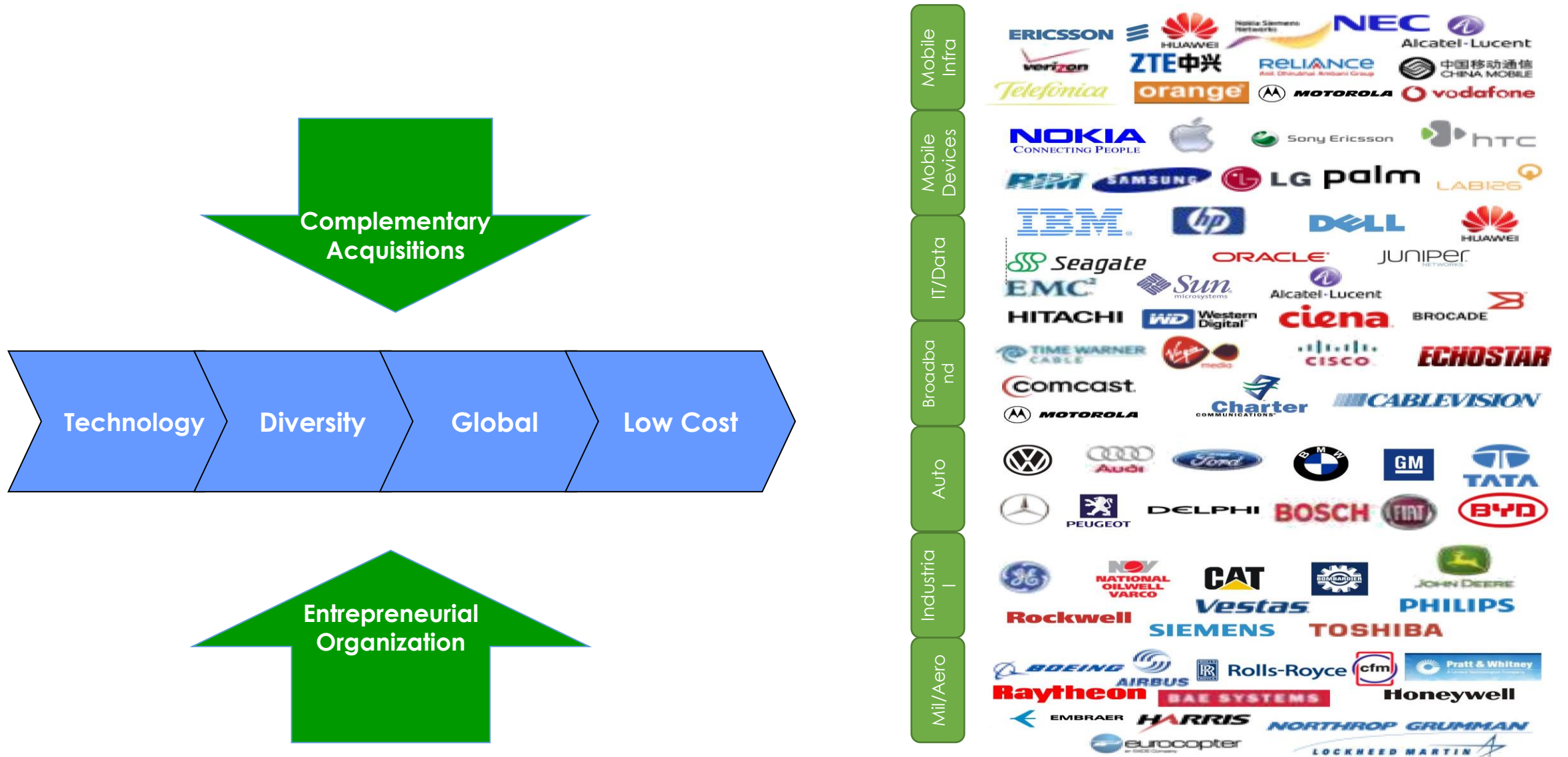


(1) Adjusted for stock split effective October 2021

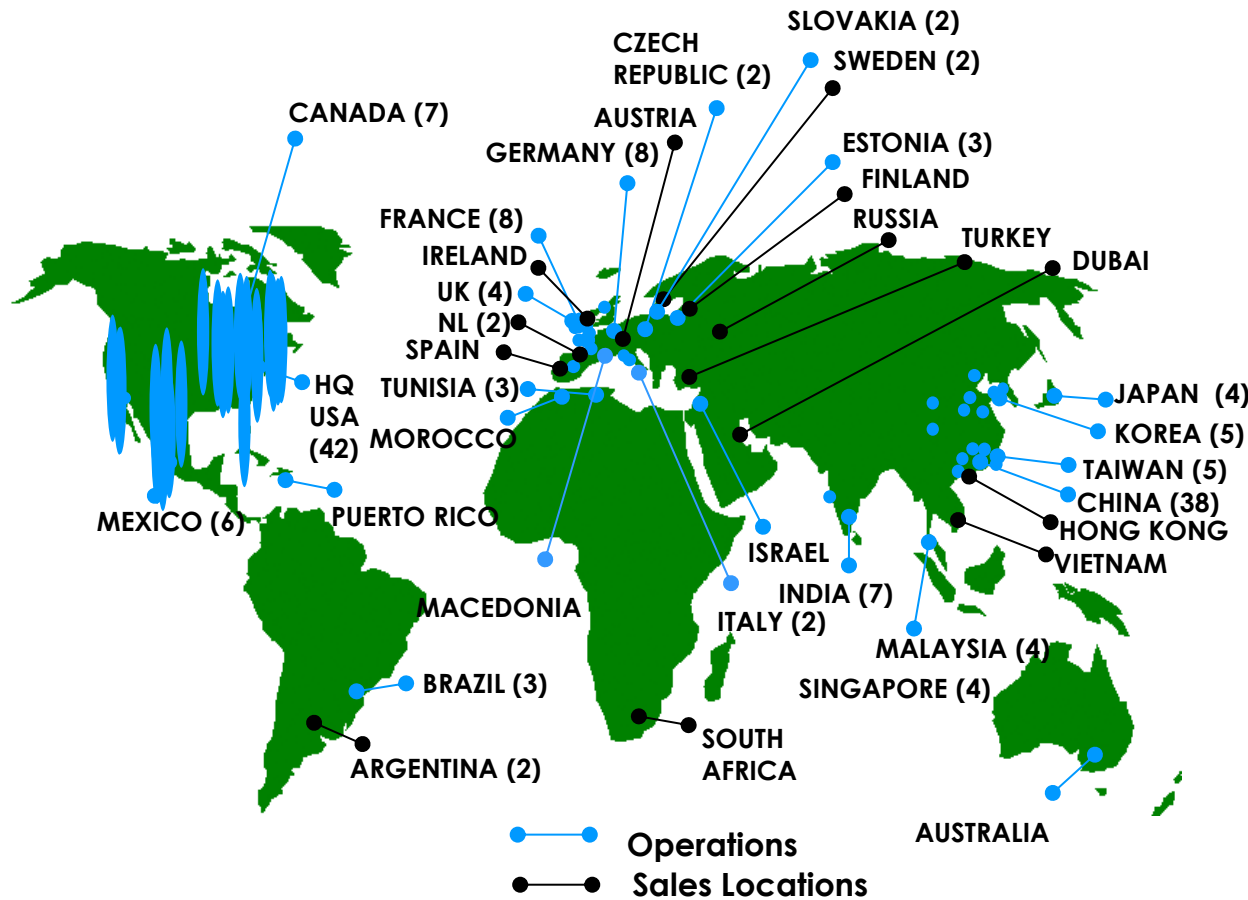
(2) Excluding one-time items

* New record

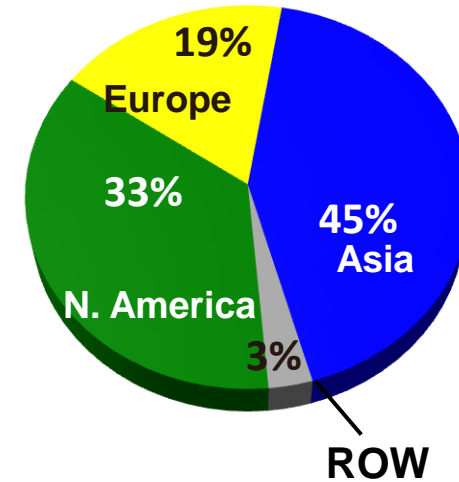
High Performance Strategy



Expanding Global Presence

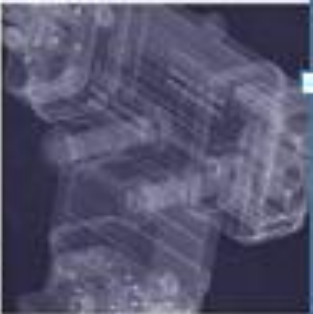


% Sales By Region



88,000+ Employees

MORE PRODUCT BETTER SERVICE GLOBAL CONNECTOR



AIIO CHINA - 2022

www.amphenol-sine.com.cn
www.amphenol-cz.cn

AIIO China

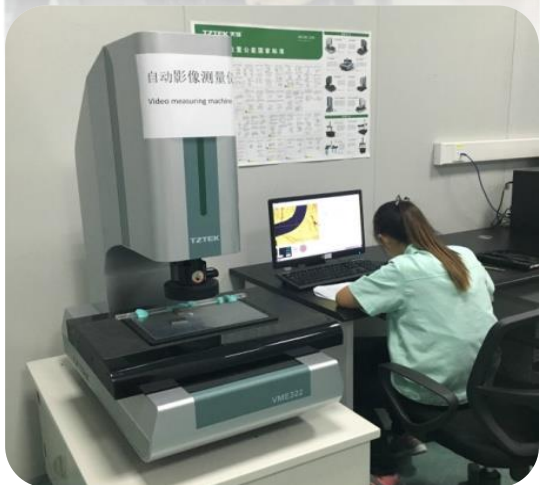
Amphenol International Industrial Operation includes three business units that are called as Sine, CATI and AAL.

Our products sold at home and abroad. They are widely used in industrial diagnostic, automotive, electric vehicle, overloaded connections, telecommunications, audio, military fields and so on.

- Gross area 10000 m²
- Area
 - Production 5000 m²
 - Warehouse 2000 m²
 - Others (office etc) 2000 m²
- Over 500+ employees



Workplace in Changzhou



Ecomate - RT360 Series

RT360 industrial circular connectors are designed to meet the requirements of MIL-C-26482 series military specification. Based on our superior build quality, high-performance capabilities, it has been developed to be completely compatible with all other existing standard products industry-wide. This series is a wide used connectors for the automotive, electric vehicles, robotics, military, welding industries and other demanding interconnect applications.

Technical Data

- Operating Temperature: : -40°C to $+105^{\circ}\text{C}$ or -40°C to $+125^{\circ}\text{C}$
- Suitable For Indoor and Outdoor Applications
- 500 Mating Cycles
- IP67&IP69K rated in mated condition
- Circular metal bayonet lock. Able to withstand extreme vibration and mechanical shock.
- Alternate keying positions available. Five positions (N, W, X, Y, Z)
- EMI/RMI shielding capability with appropriate backshell / Unshielded capability with plastic end cap
- *UL1977. ROHS compliant*



RT Series

Technical Data

- 8 shell sizes & 23 insert configurations
- With standard insert arrangements & mixed power and signal arrangements.
- 8 contact size, Rated Voltage 500V AC/DC, 45A, 10~12AWG
- 2.5mm contact size, Rated Voltage 500V AC/DC, 23A, 12~14AWG
- 16 contact size, Rated Voltage 500V AC/DC, 13A, 14~26AWG
- 20 contact size, Rated Voltage 250V AC/DC, 7.5A(machined), 5A(stamped & formed), 20~30AWG



RT0W Series



Technical Data

- Mated with MIL-C-26482 series connector
- 5 shell sizes & 5 insert configurations
- High density arrangements from 6~32 contacts.
- 20 contact size, Rated voltage 250V AC/DC, Rated current 7.5A(machined), 5A(stamped & formed), 20~30AWG

RTS Series



Technical Data

- 6 shell sizes
- With standard insert arrangements & mixed power and signal arrangements.
- 8 contact size, Rated voltage 500V AC/DC, Rated current 45A, 10~12AWG
- 2.5mm contact size, Rated voltage 500V AC/DC, Rated current 23A, 12~14AWG
- 16 contact size, Rated voltage 500V AC/DC, Rated current 13A, 14~26AWG
- 20 contact size, Rated voltage 250V AC/DC, Rated current 7.5A(machined), 5A(stamped & formed), 20~30AWG

FLS Series

Technical Data

- 3 shell sizes
- With standard insert arrangements & mixed power and signal arrangements.
- 8 contact size, Rated voltage 500V AC/DC, Rated current 45A, 10~12AWG
- 2.5mm contact size, Rated voltage 500V AC/DC, Rated current 23A, 12~14AWG
- 16 contact size, Rated voltage 500V AC/DC, Rated current 13A, 14~26AWG
- 20 contact size, Rated voltage 250V AC/DC, Rated current 7.5A(machined), 5A(stamped & formed), 20~30AWG



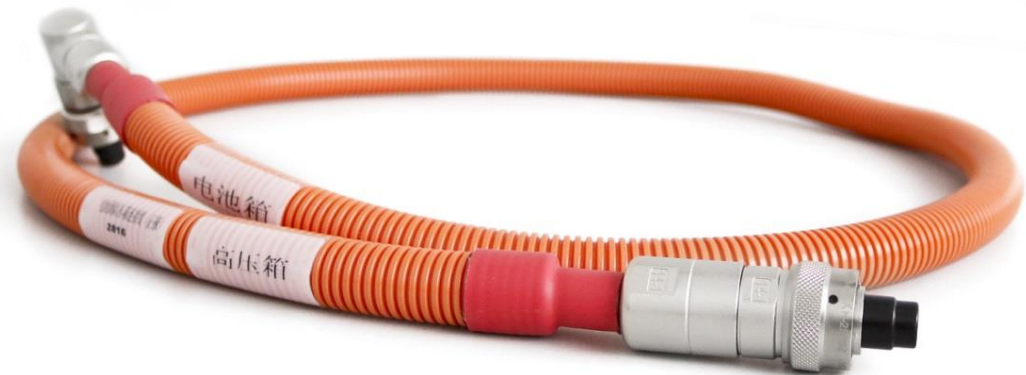
RTHP Series

Technical Data

- 4 Shell Sizes • High Reliability
- Features Amphenol's **RADSOK®** contact technology
- Single Pole High Power Arrangements; 3.6mm-10mm Contact Sizes
- 3.6mm contact size, Rated voltage 630V AC/DC , Rated current 86A
- 6.0mm contact size, Rated voltage 630V AC/DC , Rated current 120A
- 8.0mm contact size, Rated voltage 630V AC/DC , Rated current 180A
- 10.0mm contact size, Rated voltage 630V AC/DC , Rated current 300A



Cable assembly with RTHP connectors



Applications of RT360 series



RT360 series



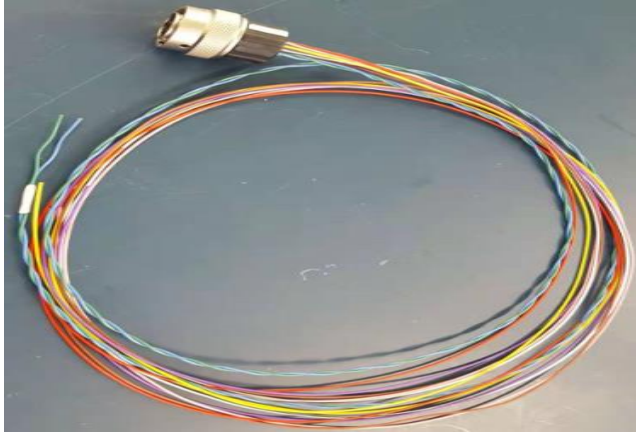
Applications of RT360 series



RT360 series



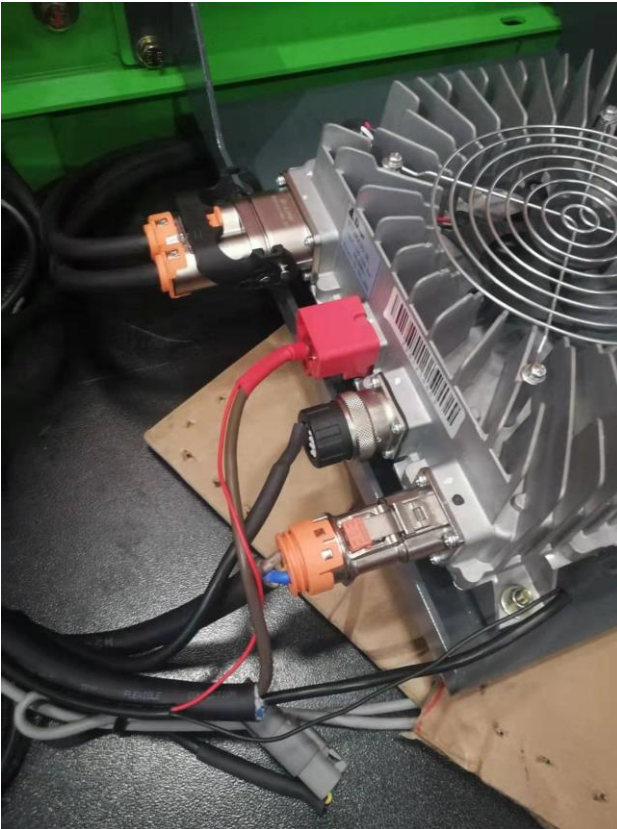
RT360 series success story



- **Country:** Japan
- **Application:** Electric car batteries
- **Product:** P80939, P80940



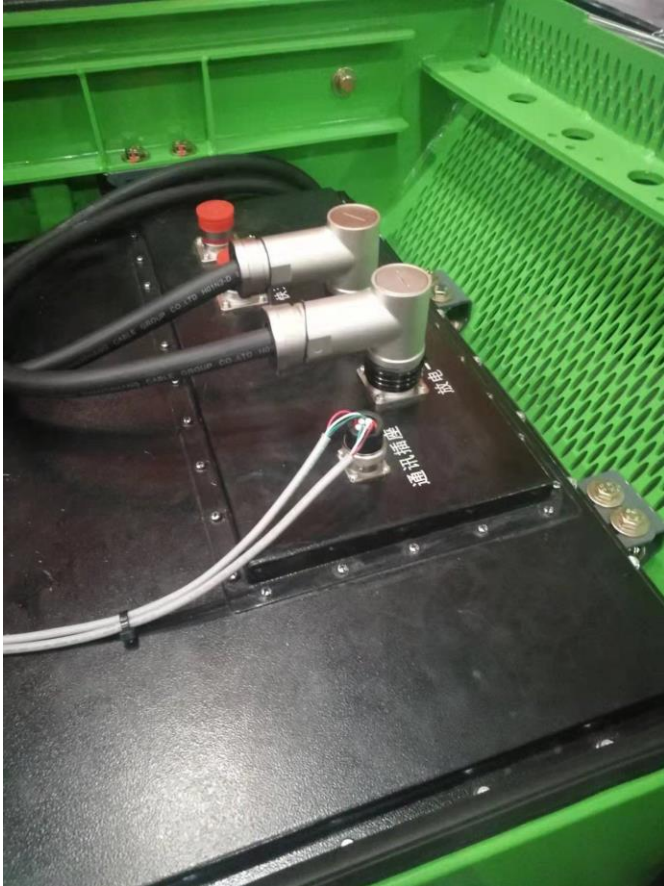
RT360 series success story



- **Country:** China
- **Application:** Electric climbing vehicle
- **Product:** RT14-12



RT360 series success story



- **Country:** China
- **Application:** Battery pack
- **Product:** RT12-8



RT360 series success story



- **Country:** China
- **Application:** PDU distribution box, excellence golf cart
- **Product:** RT22-28

RT360 series success story



- **Country:** China
- **Application:** Power battery system
- **Product:** RTS/AT2P/ATP2P



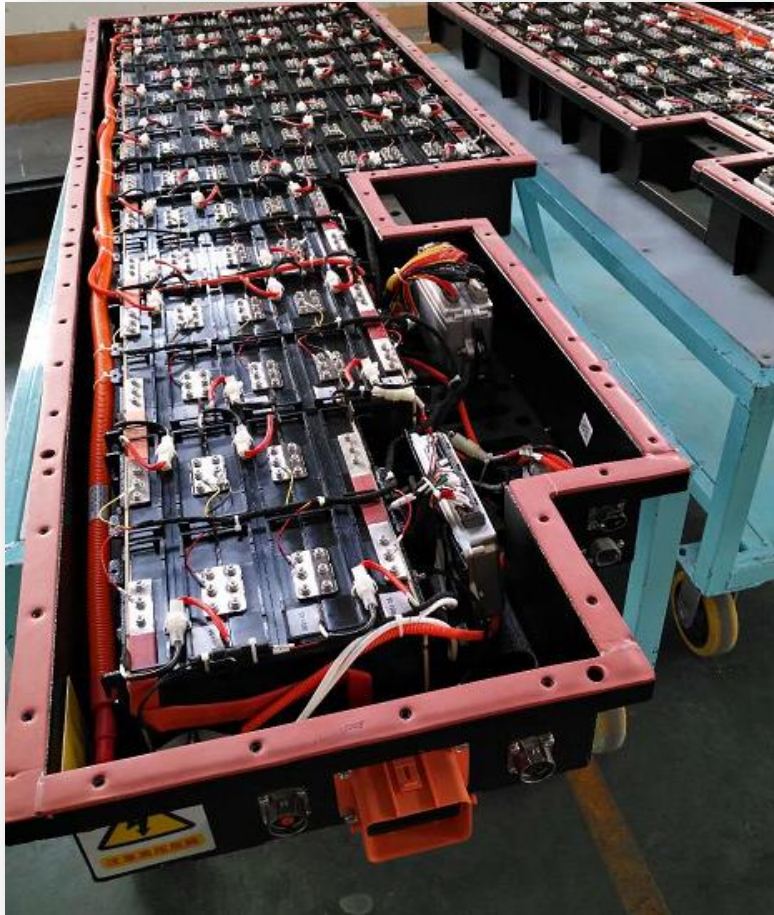
RT360 series success story



- **Country:** India
- **Application:** Electric vehicle wiring harness
- **Product:** RTS/AT2P/ATP2P



RT360 series success story



- **Country:** China
- **Application :** Battery Pack
- **Product:** RT 16-19, AT 6PIN



RT360 series success story



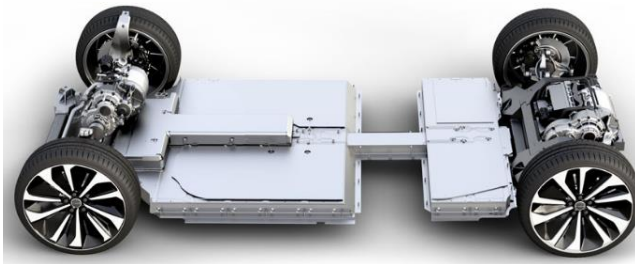
- **Country:** China
- **Application :** Electric off-road motor
- **Product:** RT 4P, 9P & RTOW 10 P



RT360 series success story

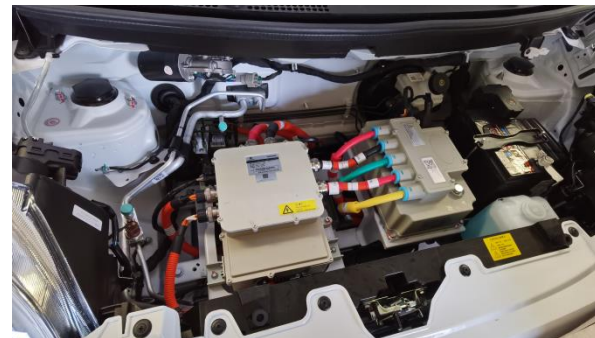


- **Country:** China
- **Application :** EV Car
- **Product:** RTS 10-6 & RT 12-8



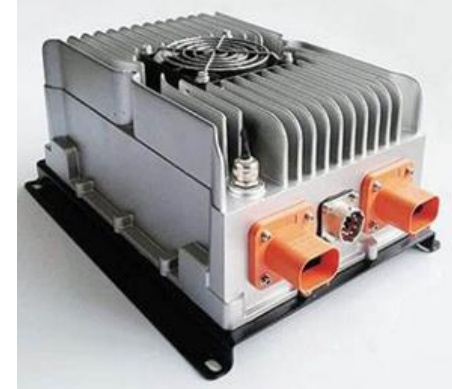
RT360 series success story

- **Country:** China
- **Application :** EV Car(lin-box)
- **Product:** RT 12-2, 12-4, 12-8, 14-3,14-4



RT360 series success story

- **Country:** China
- **Application :** OBC
- **Product:** RT 2P,4P,6P & 8P



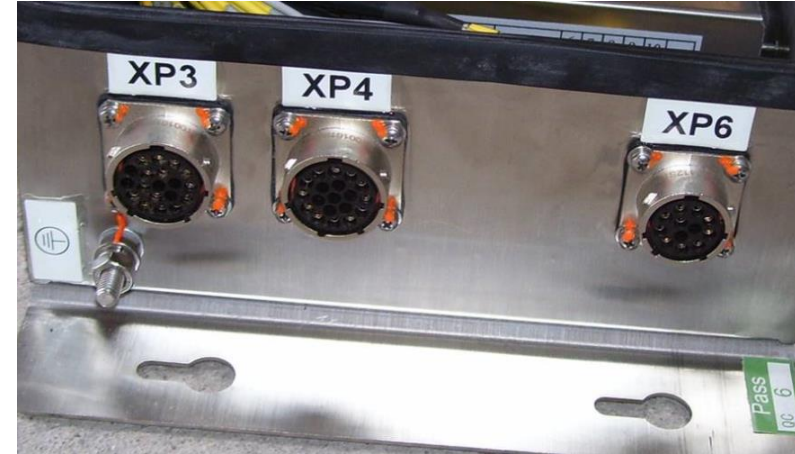
RT360 series success story

- **Country:** China
- **Application :** Motor low voltage signal line
- **Product:** RT 16-19



RT360 series success story

- **Country:** China
- **Application :** Rail transit gate control system
- **Product:** RT series



RT360 series success story

- **Country:** China
- **Application :** The control system of maglev train
- **Product:** RT series



RT360 series success story

- **Country:** China
- **Application :** EMU controller and smoke control system
- **Product:** AEM & RT series



RT360 series success story

- **Country:** China
- **Application :** Cable assembly on EV BUS
- **Product:** RT series



RT360 series success story



- **Country:** China
- **Application :** Electric motor control system
- **Product:** RTHP0161P*, RTHP6161S*



RT360 series success story



- **Country:** China
- **Application :** Battery park
- **Product:** RTHP6161



RT360 series success story



- **Country:** China
- **Application :** High-voltage board
- **Product:** RTHP16-1/RT-1619/RT-164/RT-144



RT360 series success story

- **Country:** China
- **Application :** Machine controller
- **Product:** RTHP16-1



- **Country:** China
- **Application :** Battery
- **Product:** RTHP16-1



RT360 series success story

- **Country:** China
- **Application :** Robot wire harness
- **Product:** RT series



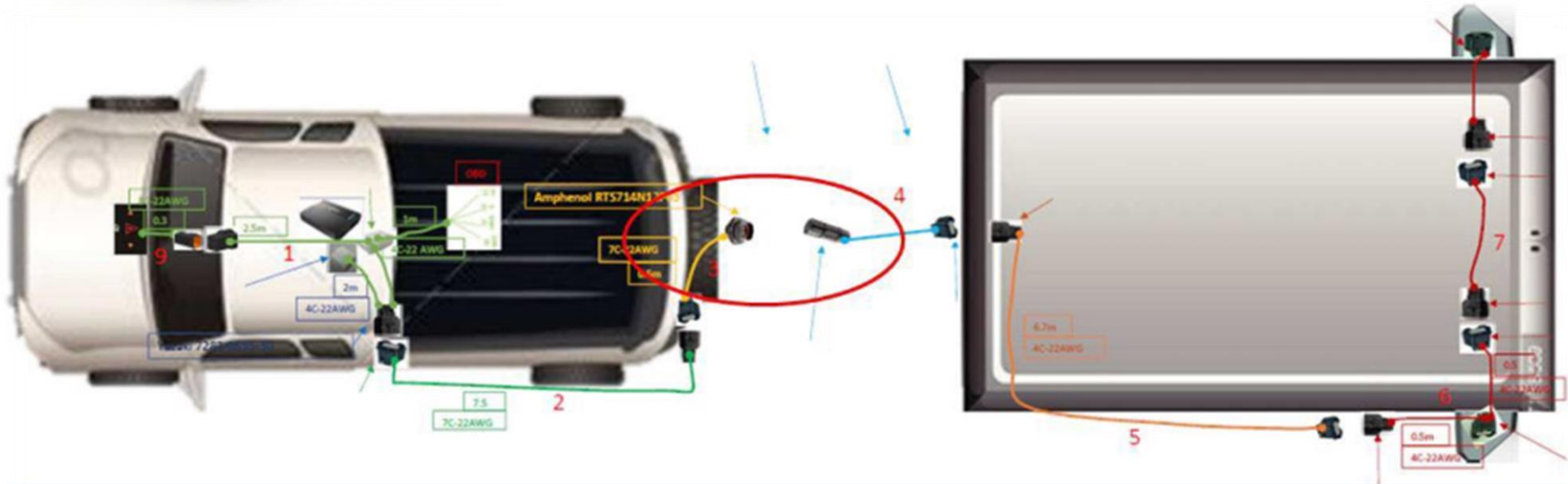
- **Country:** China
- **Application :** Robot
- **Product:** RT series



RTS series success story



- **Country:** China
- **Application:** Automotive Monitoring Systems
- **Product:** RTS 14-12



A series connectors

Designed with SAE-J2030, Amphenol Sine connectors A series are a high-performance, cost-effective solution able to be used in a variety of interconnect applications: Heavy Duty, Transportation, Marine, Diagnostic, Military, Alternative Energy and Agricultural.

Technical Data

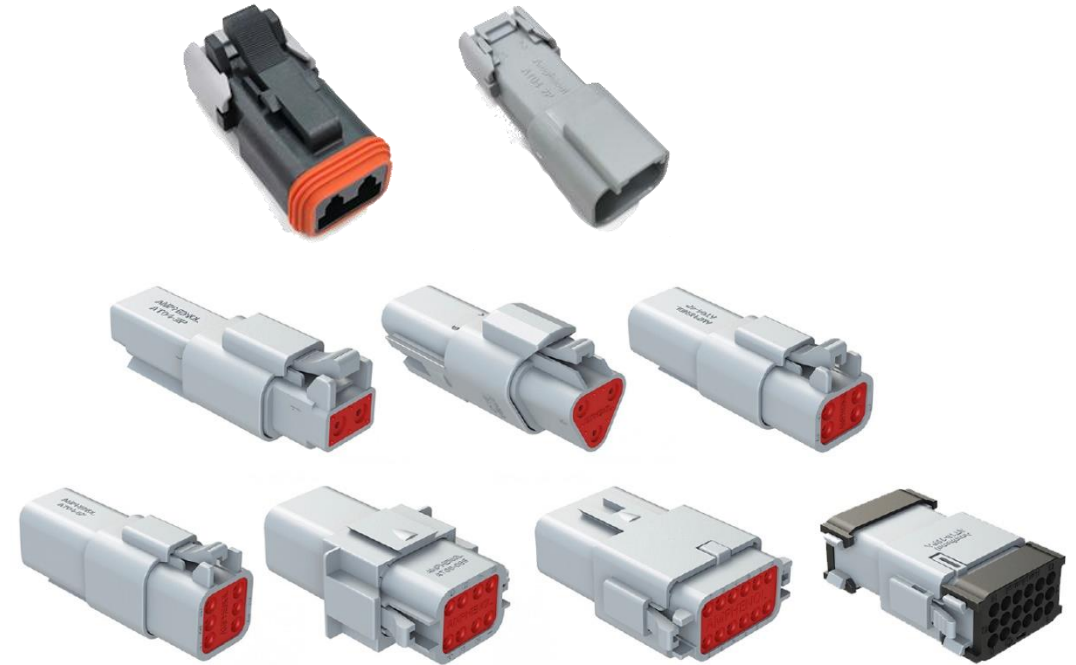
- Operating Temperature: : -55°C to $+125^{\circ}\text{C}$
- Suitable For Indoor and Outdoor Applications
- 100 Mating Cycles
- IP67&IP69K rated in mated condition
- *UL1977. ROHS compliant*



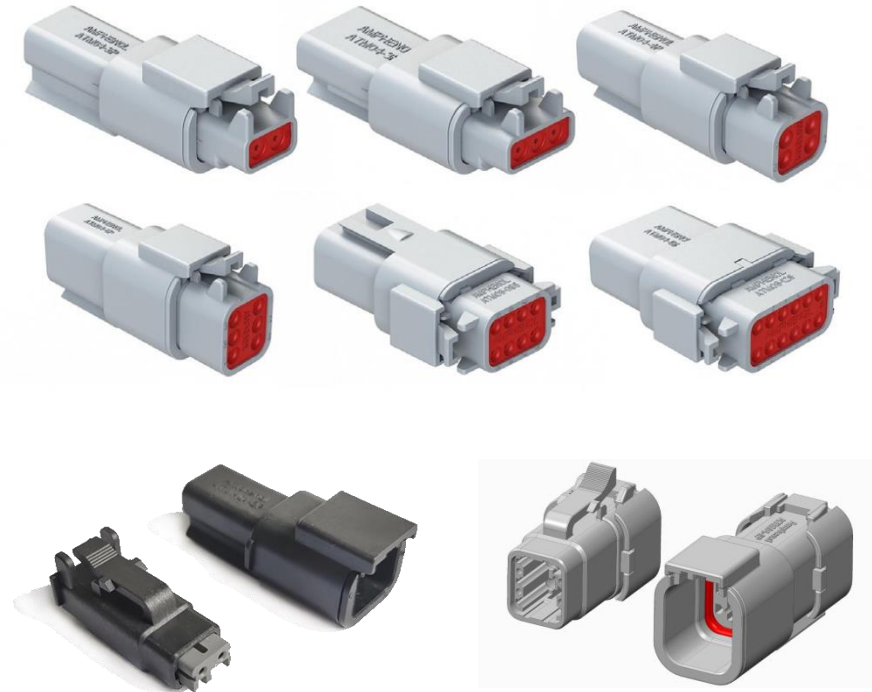
AT Series

Technical Data

- 2, 3, 4, 6, 8, 12, 15, 18 positions available
- Rating voltage: 250V AC/DC according to IEC
500V AC/DC according to UL 1977
- 16 contact size, 13A, 14~20AWG
- Wire to panel, wire to wire available
- Thermoplastic, Flammability Rating: UL94, V-0



ATM Series



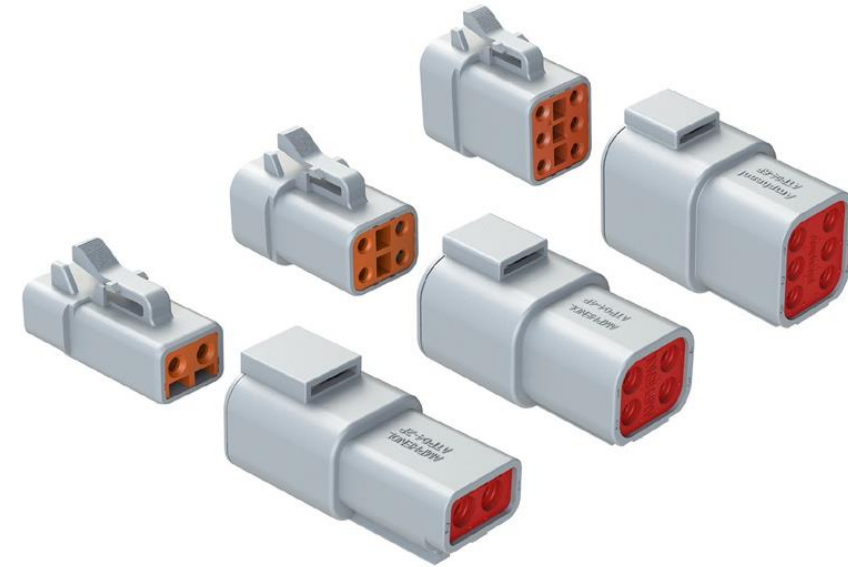
Technical Data

- 2, 3, 4, 6, 8, 12 positions available
- Rating voltage: 250V AC/DC according to IEC
500V AC/DC according to UL 1977
- 20 contact size, 7.5A, 16~22AWG
- Wire to panel, wire to wire available
- Thermoplastic, Flammability Rating: UL94, V-0

ATP Series

Technical Data

- 2, 4, 6 positions available
- Rating voltage: 250V AC/DC according to IEC
500V AC/DC according to UL 1977
- 12 contact size, 25A, 10~14 AWG
- Wire to panel, wire to wire available
- Thermoplastic, Flammability Rating: UL94, V-0



ATV Series

Technical Data

- 18 positions available
- Rating voltage: 250V AC/DC according to IEC
500V AC/DC according to UL 1977
- 16 contact size, 13A, 14~20AWG
- Wire to panel, wire to wire available
- Thermoplastic, Flammability Rating: UL94, V-0



ATV Series

Technical Data

Application : BMS and Controller Box

- 38 positions available
- Rating voltage: 250V AC/DC according to IEC
500V AC/DC according to UL 1977
- 16 contact size, 6 power contacts, 13A, 14~26AWG
32 power contacts, 2A, 20~22AWG
- Wire to panel available
- Thermoplastic, Flammability Rating: UL94, V-0



AHD Series

Technical Data

- 6,9 positions available
- Rating voltage: 250V AC/DC according to IEC
500V AC/DC according to UL 1977
- 6 position: match with 12 contact size , 25A, 10~14AWG
- 9 position: match with 16 contact size, 13A, 14~20AWG
- High-performance, cost-effective
- **SAE J1939** protocol standard
- Ideal for controlled/uncontrolled environmental conditions



AHDP Series

Technical Data

- 24 Shell: 7, 9, 18, 19, 21, 23, 27, 29, 31, 35, 47, 91 positions available
- 18 Shell: 6, 8, 14, 20, 21 position available
- Rating voltage: 250V AC/DC according to UL 1977
- 4 contact size, 100A, 6AWG
- 8 contact size, 60A, 10~12AWG
- 12 contact size, 25A, 10~14AWG
- 16 contact size, 13A, 14~20AWG
- 20 contact size, 7.5A, 16~22AWG
- High density signal and mixed power insert configurations
- Bulkhead mounting or In-line
- Reverse and standard arrangements



AHDM Series

Technical Data

- 24 Shell: 7, 9, 18, 19, 21, 23, 27, 29, 31, 35, 47, 91 positions available
- 18 Shell: 6, 8, 14, 20, 21 position available
- Rating voltage: 250V AC/DC according to UL 1977
- 4 contact size, 100A, 6AWG
- 8 contact size, 60A, 10~12AWG
- 12 contact size, 25A, 10~14AWG
- 16 contact size, 13A, 14~20AWG
- 20 contact size, 7.5A, 16~22AWG
- High density signal and mixed power insert configurations
- Bulkhead mounting or In-line
- Reverse and standard arrangements



Plastic PanelMate connectors



Technical Data

- AT series 2, 3, 4, 6, 8, 12 , 18 positions: 16 contact size, 13A
- AT series 13 position: 12 contact size, 25A; 16 contact size, 13A
- ATP series 2 and 4 positions: 12 contact size, 25A
- ATV series 18 positions: 16 contact size, 13A
- ATM series 12 positions : 20 contact size, 7.5A
- ATHD series 8# 12# panel waterproof connector
- Harsh environment applications

Flange Mount series



Technical Data

- AT series 2, 3, 4, 6, 8, 12 positions: 16 contact size, 13A
- ATM series 12 position: 20 contact size, 7.5A
- Harsh environment applications

ATHD Series

Technical Data

- Single position
- Rating voltage: 250V AC/DC according to IEC
600V AC/DC according to UL 1977
- 4 contact size, 100A , 6AWG
- 8 contact size, 60A , 8~10AWG
- 12 contact size, 25A , 10~14AWG
- Wire to panel, wire to wire available

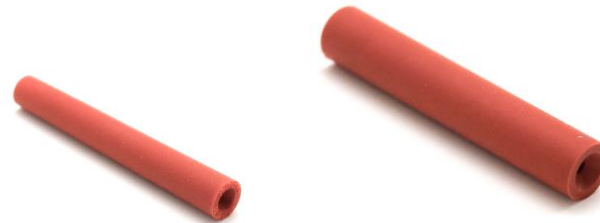


AT Speed Splices series

- Our AT Speed Splices offer a unique single terminal solution, which is designed to protect connections from dirt, dust, and water immersion up to 1 meter. Used in harsh environments, such as the construction, mining, marine, and agricultural industries, Jiffy Splices are easy to install and help quickly repair damaged electrical connections on equipment at the jobsite. options.

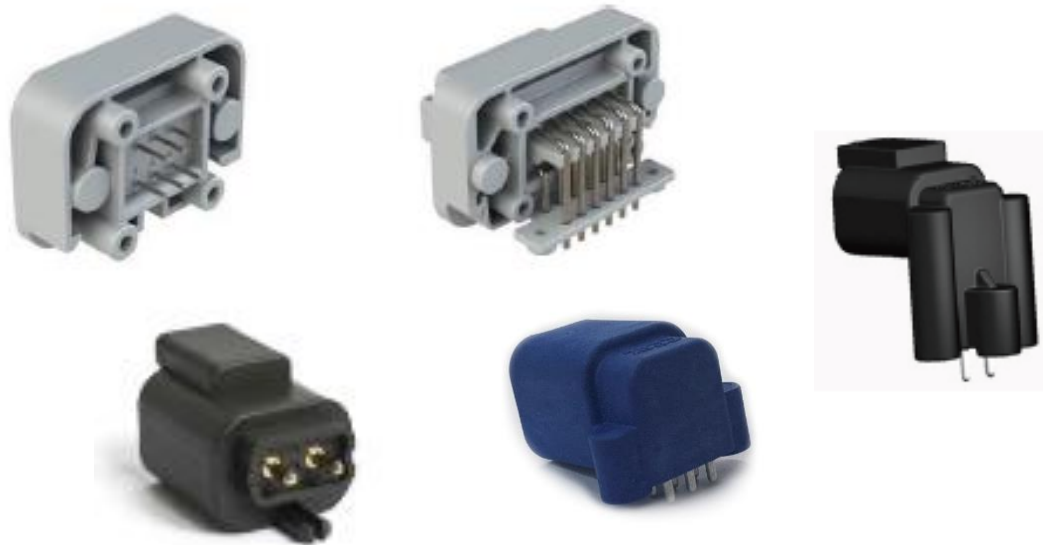
Technical Data

- Single position
- 12 contact size, 25A , 12~14AWG
- 16 contact size, 25A , 12~14AWG



PCB series

- The AT Family offers printed circuit board (PCB) connectors that are heavy duty environmentally sealed connectors designed for wire-to-circuit board connections. Available in a variety of styles for the AT and ATM connector series, Amphenol PCB connectors cover a range of pin counts from 2 to 12 and wire gauges from 14 to 22. Many of the connectors are available in straight or 90° pin options.



Technical Data

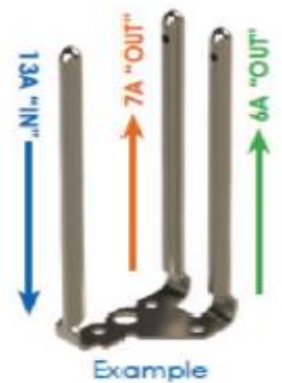
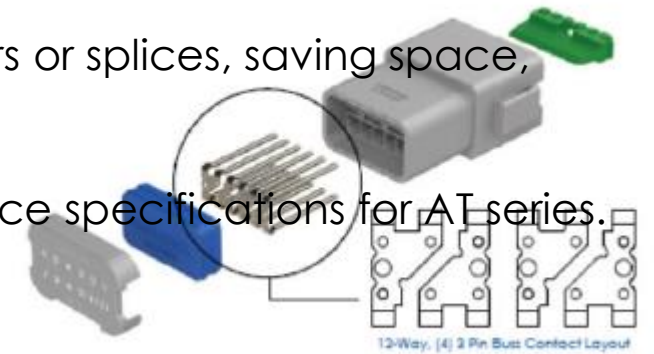
- AT series 2, 4, 6, 8, 12, 13, 18 positions
- ATM series 2, 3, 4, 6, 8, 12 positions
- ATP series 2, 4 positions
- Straight or 90° pin options

Hyperbuss series

- HYPERBUSS is bussing product which based on our AT series, all power or data to be fed into a connector through one or more terminals. Provide multiple independent electrical circuits. The connectors are available in multiple buss configurations using standard size 16 contacts, with plating options in nickel or gold.

A single HYPERBUSS connector can replace several standard connectors or splices, saving space, wiring, and weight.

HYPERBUSS product be able to mating with AT plug, meet all performance specifications for AT series.



Technical Data

- AT series 2, 4, 6, 8, 12 positions
- Distribute the current

Extended Body AT Plugs Designed for Overmolding

- Custom Cable Assemblies are available for any application, and carry with them the capabilities of being overmolded in any size or length necessary. 2 pin, 4 pin, 6 pin, 8 pin and 12pin overmold connectors are available now, which are developed for overmolding cable assembly easily.



With diode and resistor series

- Amphenol AT connectors with diodes and resistors are useful anywhere you need to regulate power or protect a device against a potential power surge.
- A diode allows current to flow in one direction only. By preventing current from traveling a circuit in the wrong direction, a diode can protect an electronic device from damage.
- Resistors protect sensitive electronics by limiting the amount of electricity that can flow to the device through the resistor, and therefore preventing power spikes.

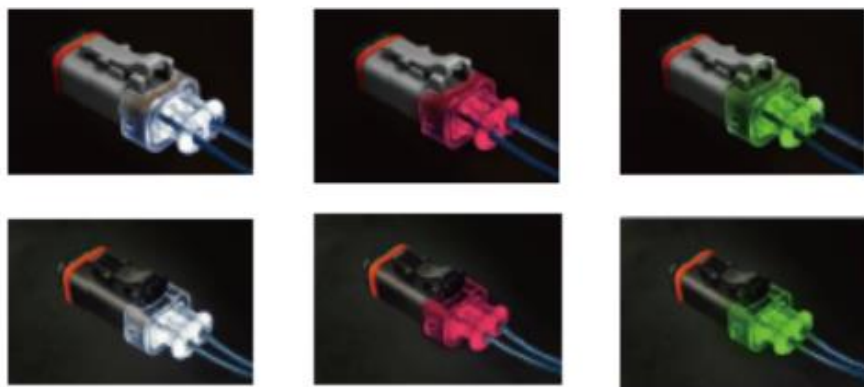
Technical Data

- AT series 2, 4 positions available.



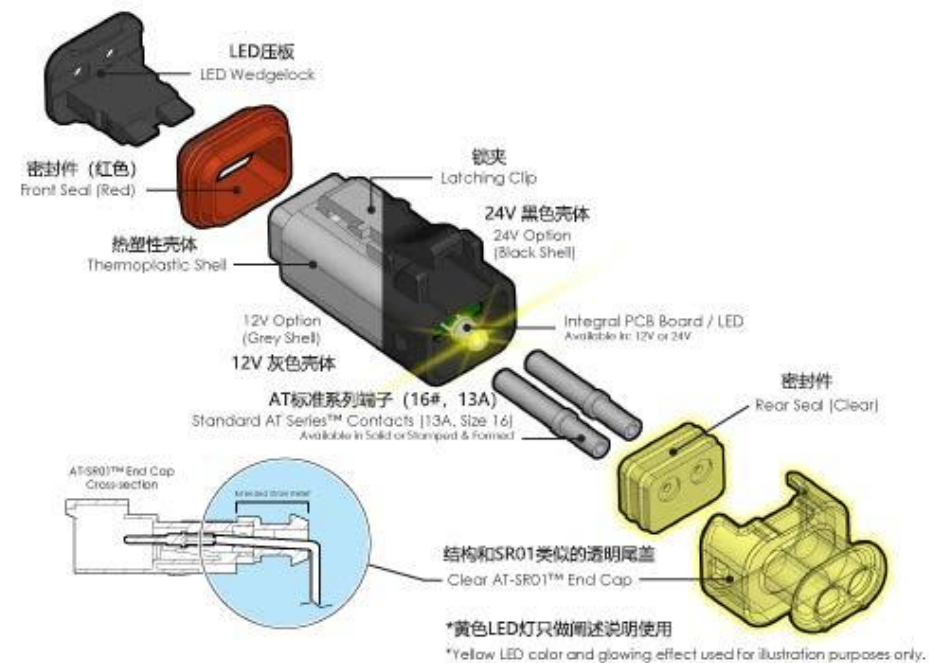
2 position LED optional

- Designed for electromechanical applications where a visible LED light is integrated into a 2 position plug allowing the user to determine the device is receiving power. Environmentally sealed, field serviceable and cost effective while reducing costly trouble shooting time. 12V and 24V versions available. Diode protected.



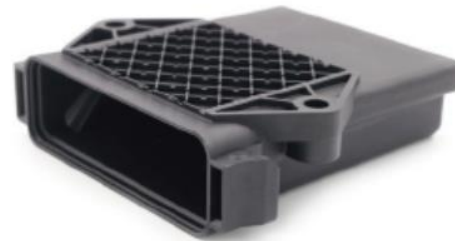
12V

24V



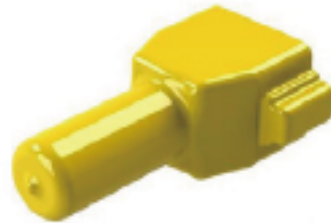
ARMOR IPX series

- ARMOR IPX product that accept snap-in headers are available. The enclosure features a through hole mounting flange.
- Existing PCB connectors: ATM 2x12/12 pin, AT 12,24,36,48 pin



Boots

- Boots provide a professional looking finishing touch for A series connectors. Made of durable plastic, these slip-on boots are not only aesthetically appealing, but also provide increased protection from dirt, paint overspray, and pressure washing. The plastic boots are rated from -29° C to $+100^{\circ}$ C and offer a slip-on design making installation quick and easy.

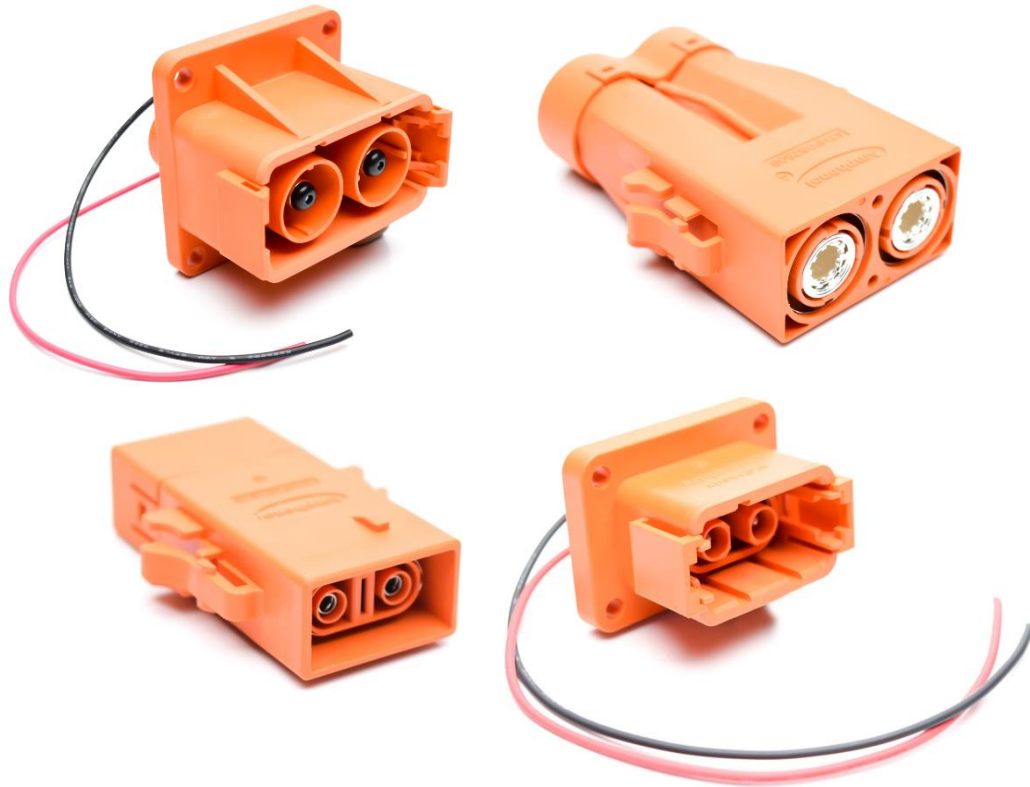


ARC Series

- The ARC series is a series of rectangular connectors currently available in 24/40/70 holes with 16# terminals. The connector does not require a wedge lock. Terminals are inserted and removed in the same way as the AHDP series. Terminals are removed using AT11-310-1605.



ATHP Series



Technical Data

- Features Amphenol's **RADSOK®** contact technology
- HVIL with shielding and unshielded solutions
- Rating voltage: 1000V AC/DC
- Test voltage: 5000V AC/DC
- Current rating of 20A for the 2.5mm² wire, 25A for the 4mm² wire, 35A for the 6mm² wire, 180A for the 50mm² wire.
- Mating cycles: 250+
- IP67 & IP 69K rated in mated condition

ATHP Series



Technical Data

- Quick lock and press-to-release design
- 360° rotating plug
- Various termination option(Threaded, Crimp, Busbar)
- Compact robust design
- Rating voltage: 1000V AC/DC
- 8.0mm contact, 50mm² @ 180A
35mm² @ 130A
25mm² @ 120A
- Mating cycles: 200+
- IP67 rated in mated condition

Optional accessories



Custom Cable Assembly - signal transmission



Applications of A series

Automotive



**HEAVY
EQUIPMENT**



AGRICULTURE



**POWER
GENERATION**



**HARSH
ENVIRONMENT**



MARINE



Diagnostics



Mining



**WATER
RESISTANT**



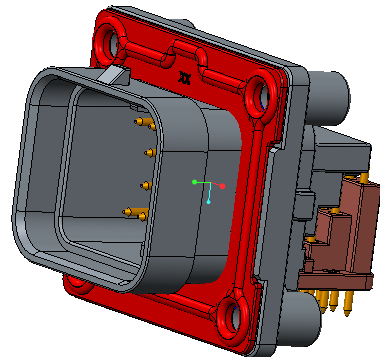
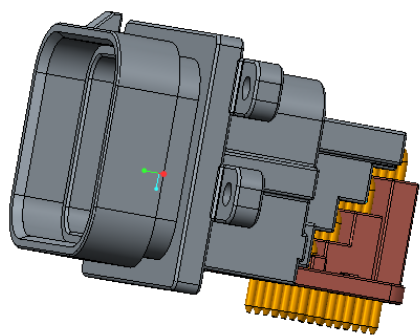
Railway



A series success story



- **Country:** China
- **Application:** Intelligent control box
- **Product:** AT 26pin



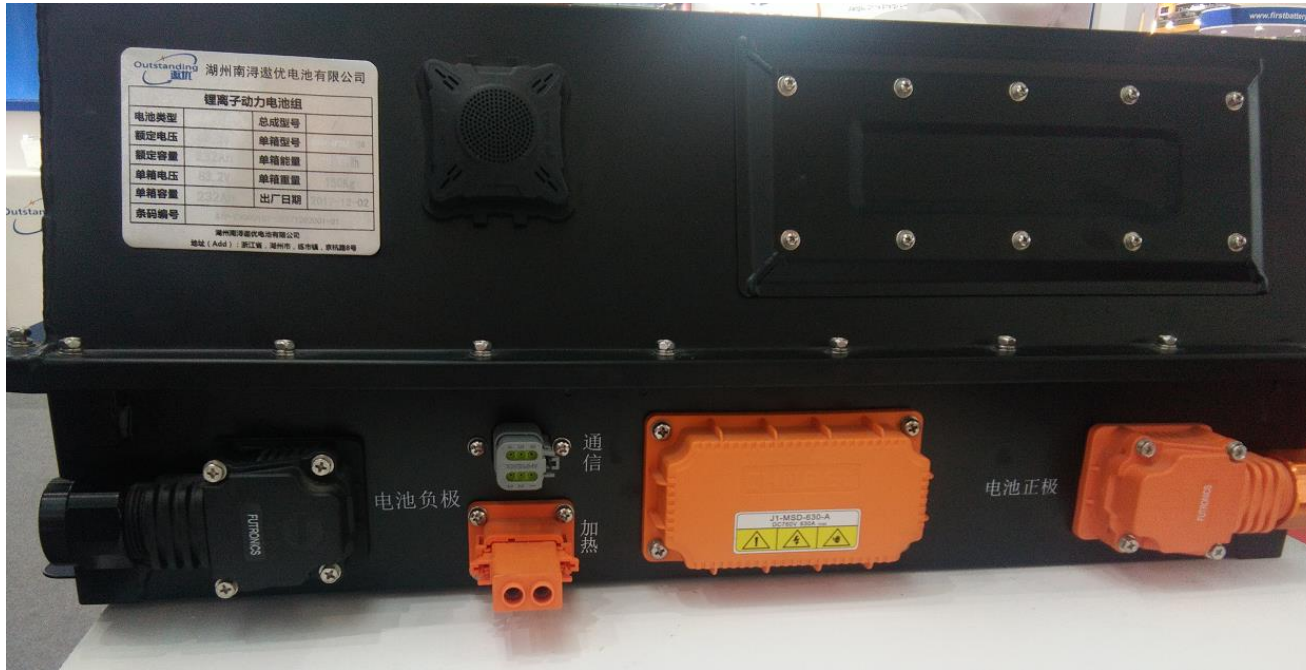
A series success story



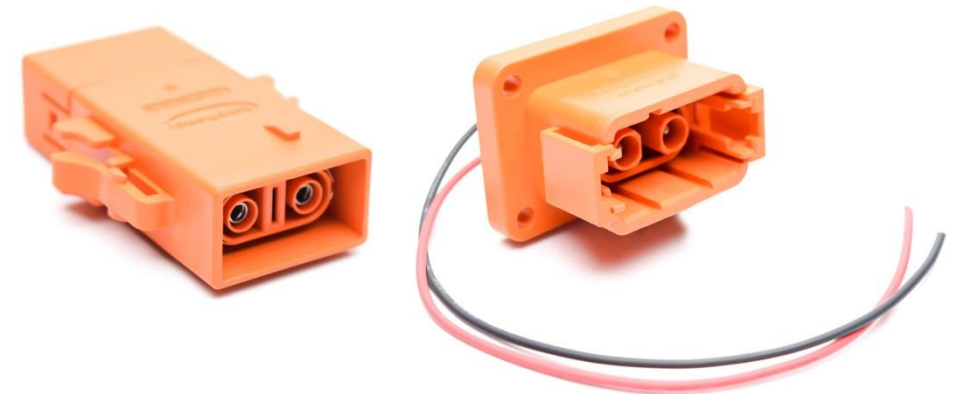
- **Country:** China
- **Application:** Solar Panel for Vehicle
- **Product:** ATP 2P



ATHP series success story



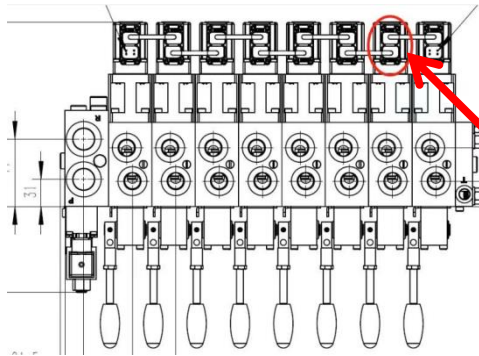
- **Country:** China
- **Application:** Battery pack
- **Product:** ATHP 2.5



A series success story



- **Country:** China
- **Application:** Hydraulic equipment
- **Product:** AT series



A series success story



- **Country:** China
- **Application:** LED Light for Vehicle
- **Product:** AT 2-6P & ATP 2/4P



A series success story



- **Country:** South Africa
- **Application:** Automobile
- **Product:** AHDP & AHDM



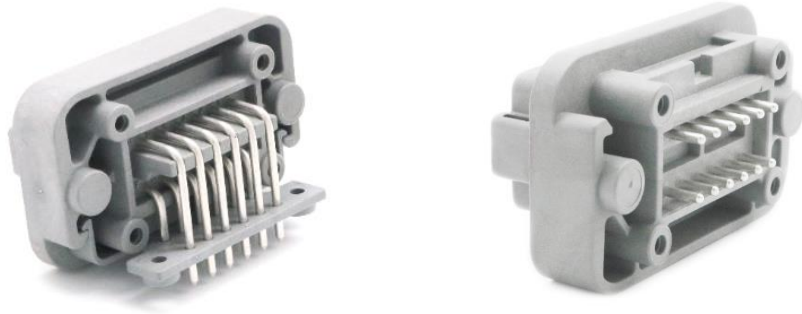
A series success story



- **Country:** Japan
- **Application:** Excavator
- **Product:** A series



A series success story



- **Country:** China
- **Application:** Agricultural machinery
- **Product:** AT13/AT15



A series success story

- **Country:** China
- **Application:** Engine cable harness
- **Product:** Cylinder piercing parts (A series customized)



A series success story



- **Country:** China
- **Application:** Heavy truck engine wiring harness
- **Product:** AT series



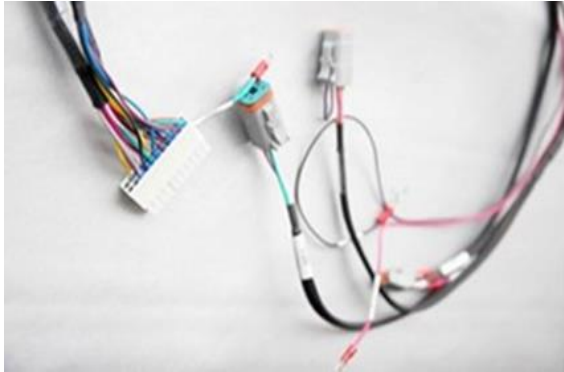
A series success story



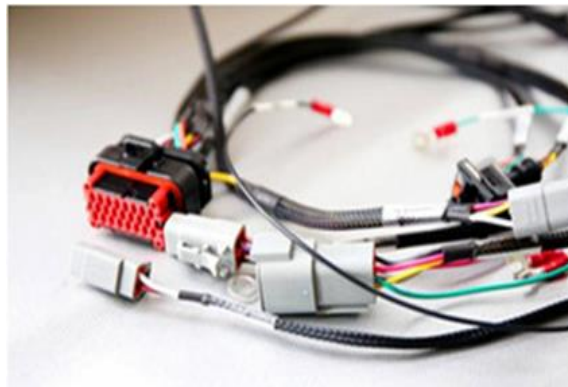
- **Country:** China
- **Application:** High pressure box ,Electric sanitation vehicle
- **Product:** AT04-2P-PM11



A series success story



- **Country:** China
- **Application:** On-board gating system wiring harness
- **Product:** AT series



A series success story



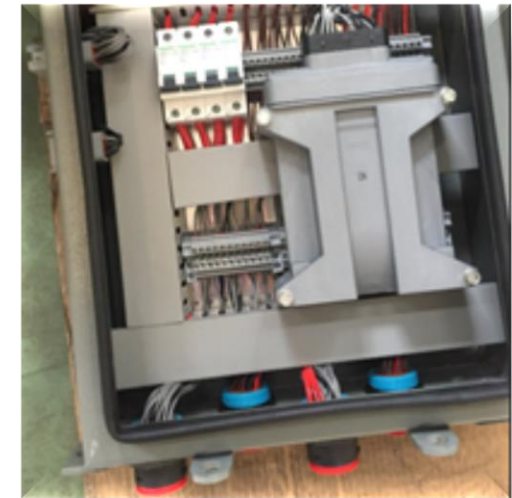
- **Country:** China
- **Application:** Transformer
- **Product:** ATM 6P, 12P



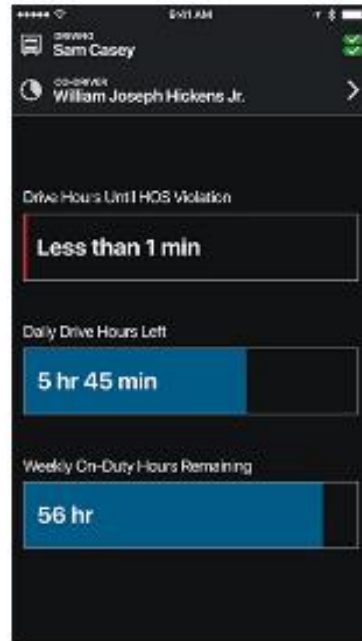
A series success story



- **Country:** China
- **Application:** Mining equipment
- **Product:** AT 4pin, 12pin & AHDP series



AHD series success story



- **Application Area: Europe**
- **Application:** Record the speed, distance and location for Bus
- **Product :** AHD series



A series success story



- **Country** : China
- **Application**: New energy vehicle high voltage control box
- **Product**: AT panel & RT series



A series success story

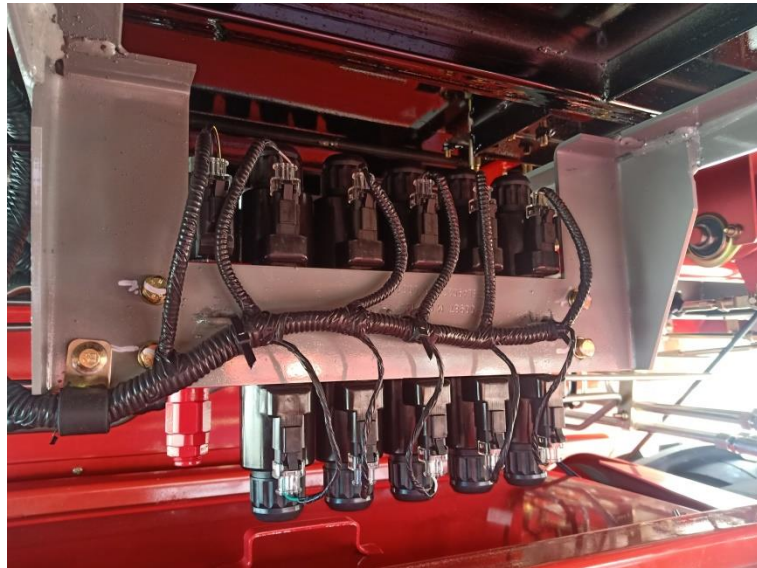
- **Country :** USA
- **Application:** BMS for Marine equipment
- **Product:** ATV 18PIN



A series success story



- **Country :** China
- **Application:** Cotton Picker transmission wire harness
- **Product:** AT LED 2PIN



Servo control connectors - Motion series

The M Series™ MotionGrade™ DIN Style Connectors are ideally suited for advanced servo drive encoder feedback applications, packaging, robotic, printing, machine tool, medical and automation environments where control signal transmission or power are required in a robust and compact delivery system.

The first generation M23 threaded connectors

- 6, 8, 9, 12, 16, 17 and 19 positions available
- 10A Max Current; 160V (12 pos), 125V (16-17 pos); 18-26AWG (12-17 pos)
- 30A Max Current; 630V Max Voltage; 14-16AWG (6-9 pos)
- **Standard Design: Fixed rear insertion design**
- **Standard Design: Back cap removal**
- **Standard Design: Installation occurs from the bottom of base through the back of the shell.**
- **Standard Design: Traditional connector assembly**
- **Standard Design: Extraction tools required**
- UL1977. ROHS Compliant



The second generation Checkmate series

CheckMate™ Quick-Locking System



- 6, 8, 9, 12, 16, 17 and 19 positions available.
- Enhanced next generation anti-vibration dual-ratcheting coupling system.
- Checkmate™ is intermateable and compatible with rival M23 quick coupling products.
- Distinctive alignment arrows with lock/unlock identifiers (ensures a solid connection every time)

MetriFit™ Strain Relief System



The Metrifit™ Strain Relief System provides maximum 360° EMI/RFI shielding, with advanced sealing capability (IP67) suitable for harsh environments. Tamper proof design ensures a safe and secure system.

The third generation Elite series

M23 Elite Connectors



- 6, 8, 9, 12, 16, 17 and 19 positions available
- 10A Max Current; 160V (12 pos), 125V (16-17 pos); 18-26AWG (12-17 pos)
- 30A Max Current; 630V Max Voltage; 14-16AWG (6-9 pos)
- UL1977, file no. is E336830 & E491265.
- **Elite Design: Top loading insert design; Front cap removal**
- **Elite Design: Loose piece insert for hand held installation ease**
- **Elite Design: Alignment tabs on the insert to help guide the insert into place**
- **Elite Design: Two flange size options to choose from**
- **Elite Design: No extraction tools required**

M40 Series



M40 Standard Connectors

- 6 and 8 positions available
- 75A Max Current; 630V Max Voltage; 8-12AWG

Hybrid Series

Hybrid DMC™ Connectors



- 2 Power + PE + 1 Signal + 4 Quad Element Ethernet
- 18A (2.0mm), 1A (1.0mm), 0.5A (Quad Element) Max Current
- 850V (2.0/1.0mm Contacts), 30VDC (Quad Element) Max. Voltage
- UL1977, file no. is E336830.

Custom cable assembly-M23 & M40



Applications of Motion series



INDUSTRIAL



ON-MACHINE



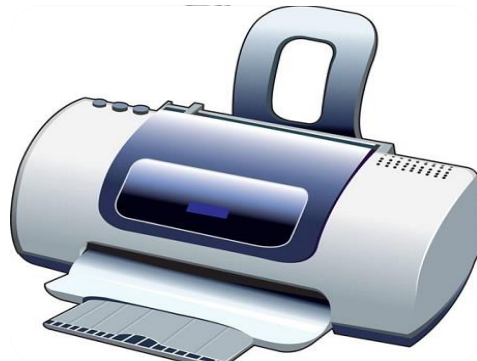
PACKAGING MACHINERY



DISTRIBUTED POWER



MOTION CONTROL



Printer



MEDICAL



COMMUNICATIONS

Servo control connectors success story



- **Country:** Worldwide
- **Application:** Power/Signal Distribution, VFD, Servo Motor
- **Product:** PowerBoss Lite/Mini/Motion Cable Assy



Servo control connectors success story

- **Country:** China
- **Application:** Industry robot
- **Product:** M23 standard series

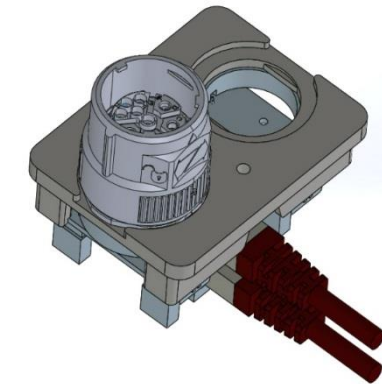


Servo control connectors success story

- **Country:** Japan
- **Application:** Servo Motors
- **Product:** M23 Hybrid DMC



- **Country:** North America
- **Application:** Power/Control for Welding Systems
- **Product:** M23 connector and cable assembly



Factory Automation

Our Factory Automation - Distributed Power and Control product lines were developed in response to the need for robust, streamlined and scalable products for use in robotic and material handling systems, such as: conveyors, sorting, automated storage and retrieval, packaging, overhead transport, palletizing and any other options imaginable.



Custom Molded Cable Assembly Solutions

Amphenol Sine Systems offers custom molded cable assembly solutions across all our standard product lines. If one of our standard products doesn't fit your specific needs, our Engineers will work with you to custom design a solution specific to your application. Whether you are looking for a customized connector solution, a complete turn-key cable assembly solution, custom wiring to simplify machine assembly or a specific mold color, Amphenol Sine Systems is your one source for proven, reliable and innovative results.



Custom Cable Assembly Solutions

Diagnostic



Custom Ethernet Cable Assembly Solutions

M12 & M22



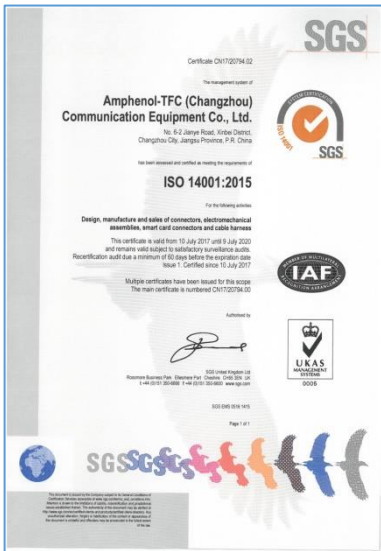
Cable Assembly success story

- **Country:** China
- **Project:** plate Cabinet cable assembly
- **Product:** cable assembly



Quality System Certification

IATF 16949



Continuous Improvement & Perfect Pursue



Quality Control

Supplier Control

- Estimate supplier
- Regular Audit
- Continuous track on quality
- Quality improvement plan

Qualified Supplier
First Safeguard

Stock Control

- Kindee system
- Incoming Inspection
- Appearance Inspection
- Key parameter check
- Certification, validity, packaging, normative testing, etc

Incoming Materials Control
Secondly Safeguard

Process Control

- Small batch inspection
- Sampling during production
- Process & quality control
- FG OQC inspection
- Label tracking
- PM & Calibration

Process Control
Thirdly Safeguard

Customer Support

- Customer complaints response and report
- Customer site inspection support
- Customer Satisfaction Research & follow

Customer Follow up
Last Safeguard

AIIO China Main customers



RENAULT



北汽集团
BAIC GROUP



上汽集团



CATL

E-POW 亿能电子



JOHN DEERE



SANY
三一重工



国机智骏
ZE DRIV

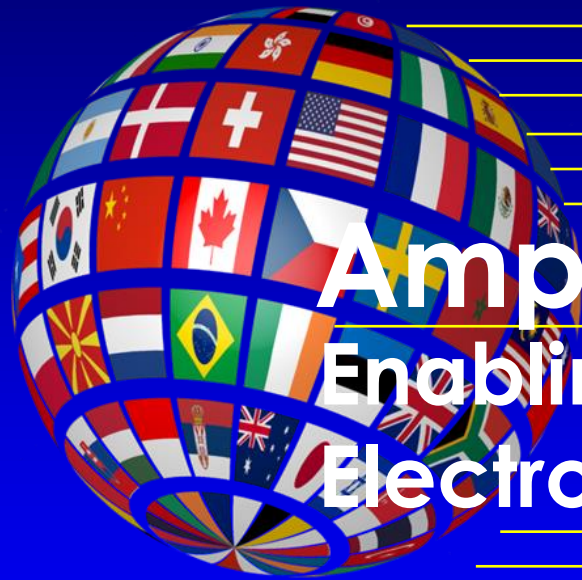


KOMATSU



AIO China Main customers





Amphenol
Enabling the
Electronics Revolution