



Amphenol

Industrial

**MIL-DTL-26482 DERIVATIVES
BAYONET PT & CMB & MS**

MIL-DTL-26482 CONNECTOR SERIES

The MIL-DTL-26482 type connector, with a bayonet coupling mechanism. Designed originally for use by the military, however has become ideal for environmental sealing or pressurized applications across a wide range of industries. This connector is also widely used in commercial, factory automation, geophysical, and shipboard industry applications. This family is a high performance, high density, high voltage and ruggedized sealed.



MIL-DTL-26482 KEY FEATURES

KEY FEATURES

¼ turn mating

Waterproof IP67/IP68/IP6K9K

Insert available in Viton and Neoprene

Available in solder and PCB

Contacts can be silver or gold plated

Suitable for wide temperature range

Different plating options

Easy adaptable

UL recognized solder type

Triple fully mated indicators

Variety of back-fittings

Variety of shell styles

Quick positive coupling

Audible, tactile and visual indication of full coupling

Conductive plating option for EMI shielding

Good shock and vibration resistance

Rohs and Reach compliant plating options

Special TUV approved grounded version



MIL-DTL-26482 FEATURES

ELECTRICAL

Voltage rating	up to 1000V at sea level according to MIL-C-26482
Current rating	7,5A -23A depending on contact size and type
Insulation resistance	> 100MΩ at 50C
Contact resistance	Depends on size/current load (min acc. to MIL-39029)

ENVIRONMENTAL:

Operating temp range	-55C to 125C (200C with Viton insulator)
IP67 when appropriate backshell is used	-40C to 105C (for LTP series)
IP69K with appropriate backshell	
IP68 with appropriate backshell	

MECHANICAL

Vibration	70-500 Hz long endurance: 10 hour test at 15g
Acceleration	50G
Mating cycles	Min 500
Number of contacts	1 to 61 per insert
Contact size	Size 20 to size 8
Contact options	Copper, Coax (RF) and thermocouple

MIL-DTL-26482 MATERIAL AND PLATING

MATERIALS

Connector and accessory hardware
Insulator and grommet
Contacts

Aluminum alloy
Neoprene or Viton on request - Hard plastic for LPT
Copper alloy min flash gold, nickel or silver plated LPT series
Copper alloy min 5-10µm gold or silver plated CMB series
Copper alloy min 30µm gold plated PT series
Copper alloy min 50µm gold plated MS series (QPL)

PLATING OPTIONS

Olive drab cadmium plating (no suffix)
Olive drab over nickel cadmium plating (014)
Black Zinc plating (025)
Black Zinc conductive plating (027)
Electroless Nickel plating (023)
Zinc Nickel plating (072)

48 h salt spray resistance, conductive non Rohs/Reach
500 h salt spray resistance, conductive non Rohs/Reach
48 h salt spray resistance, poor conductive Rohs/Reach
48 h salt spray resistance, conductive Rohs/Reach
48 h salt spray resistance, conductive Rohs/Reach
500 h salt spray resistance, conductive Rohs/Reach

CHEMICAL RESISTANCE

Diesel fuel
JP-4
Hydraulic fluid
Gasoline

Bio Diesel fuel
Unleaded fuel
M15 gas with 15%methanol
Battery fluid

Brake fluid
Antifreeze fluid
Transmission fluid
Hydraulic fluid

MIL-DTL-26482 FAMILY AND OPTIONS

MS311X SERIES = SOLDER

QPL (qualified product listing at DLA)
Military specified and approved
Solder termination style
Olive drab cadmium plating
NON Rohs and NON REACH
NO special suffix options
Contacts are 50UN GOLD PLATED only

MS312X SERIES = CRIMP

QPL (qualified product listing at DLA)
Military specified and approved
Crimp termination style
Olive drab cadmium plating
NON Rohs and NON REACH
NO special suffix options
Contacts are 50UN GOLD PLATED only



MIL-DTL-26482 FAMILY AND OPTIONS

PT SERIES

Commercial proprietary partnumber Amphenol

According to the MIL specification and fully intermateable

Solder and crimp style available

Different plating options (Oliver drab cadmium, electroless nickel, black zinc, grey zinc and others)

Rohs and REACH compliant with proper plating

Special suffixes for customizations and specials

Contacts are 30UN GOLD PLATED only



MIL-DTL-26482 FAMILY AND OPTIONS

CMB SERIES

Commercial proprietary partnumber Amphenol

According to the MIL specification and fully intermateable

Solder style available

Different plating options (Oliver drab cadmium, electroless nickel, black zinc, grey zinc and others)

Rohs and REACH compliant with proper plating

Special suffixes for customizations and specials

Contacts are 10UN GOLD PLATED and SILVER PLATED



MIL-DTL-26482 FAMILY AND OPTIONS

LPT SERIES**

Commercial proprietary partnumber Amphenol

According to the MIL specification and fully intermateable

Crimp style with stamped & formed contacts

UL-V0 rated

Operating Temp: -40C to +105C

Different plating options (Olive drab cadmium, electroless nickel, black zinc, grey zinc and others)

Rohs and REACH compliant with proper plating

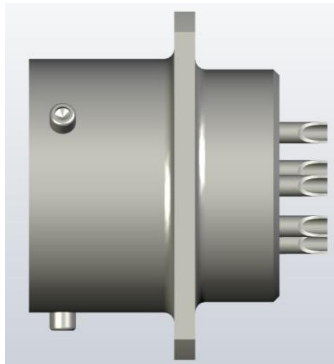
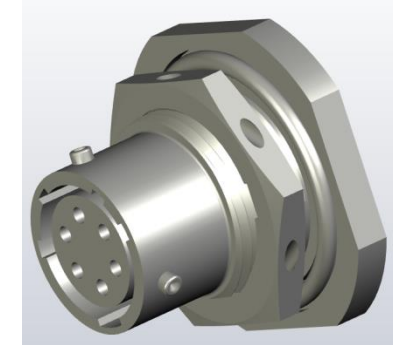
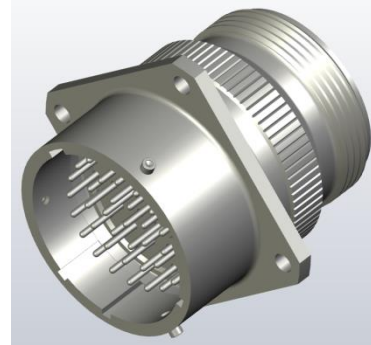
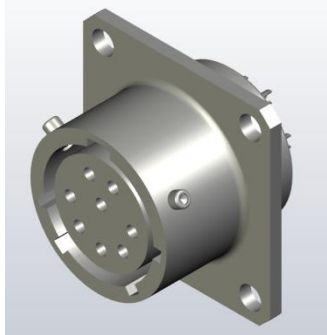
Special suffixes for customizations and specials

Contacts are stamped and formed with 10UN GOLD PLATED and SILVER PLATED

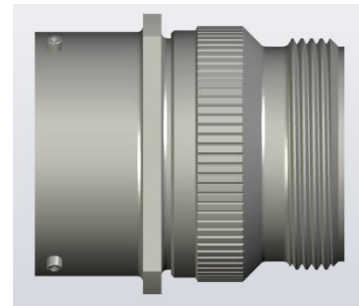
*** some features are slightly lower than regular PT and CMB series.*



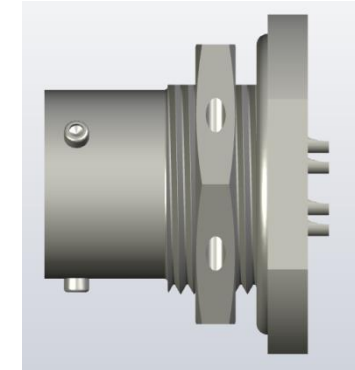
MIL-DTL-26482 PT/CMB/MS RECEPTACLE SHELL OPTIONS



PANEL MOUNT RECEPTACLE

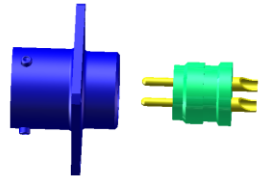
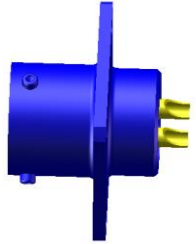


WALL MOUNT RECEPTACLE



JAMNUT RECEPTACLE

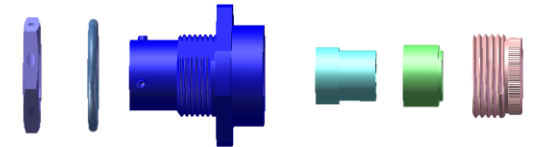
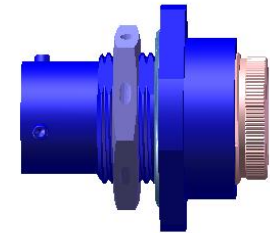
MIL-DTL-26482 PT/CMB/MS RECEPTACLE SHELL EXPLOSION AND PN



PT02/CMB02/MS3112/MS3122
PANEL MOUNT RECEPTACLE

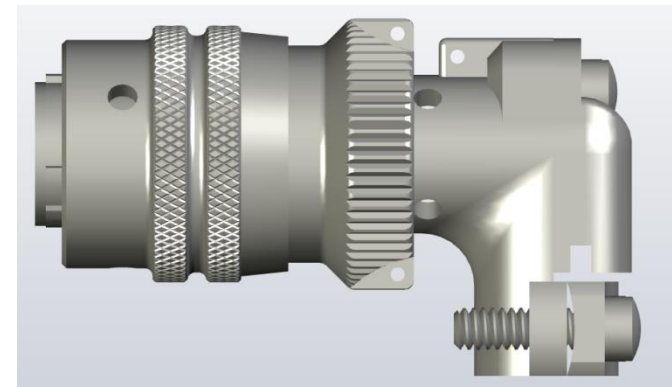
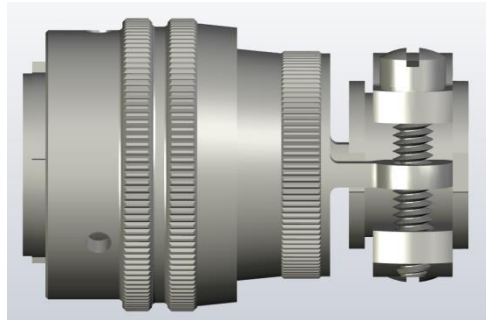
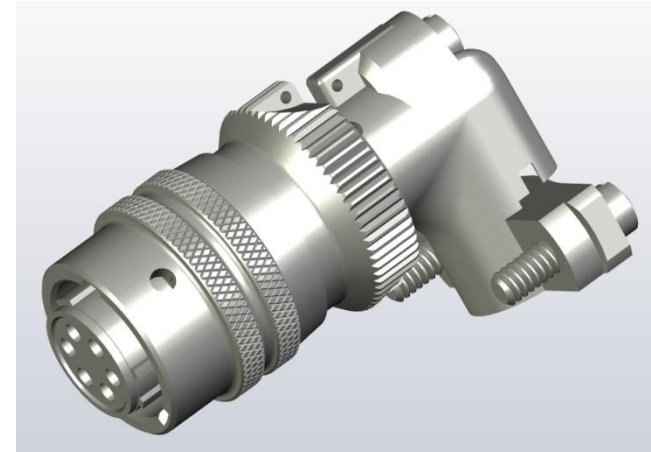


PT00/CMB00/MS3111/MS3121
WALL MOUNT RECEPTACLE



PT07/CMB07/MS3114/MS3124
JAMNUT RECEPTACLE

MIL-DTL-26482 PT/CMB/MS PLUG SHELL OPTIONS



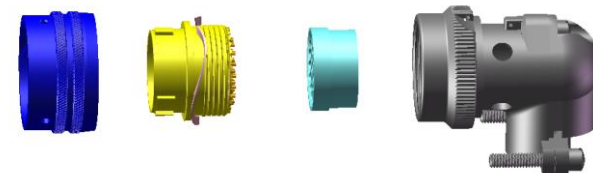
STRAIGHT PLUG

RIGHT ANGLE PLUG

MIL-DTL-26482 PT/CMB/MS PLUG SHELL EXPLOSION AND PN



PT06/CMB06/MS3116/MS3126
STRAIGHT PLUG



PT08/CMB08
RIGHT ANGLE PLUG

MIL-DTL-26482 PT/CMB/MS ADAPTER OPTIONS

**“A”
ACCESSORIES ADAPTER**



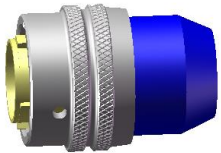
**“E” OR “SE”
OPEN WIRE SEAL ADAPTER**



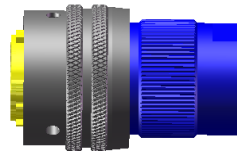
**“E” (SR) OR “SE” (SR) OR “F”
MECHANICAL STRAIN RELIEF**



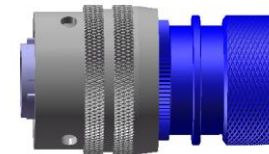
**“P” OR “SP”
POTTING BOOT**



**“PG”
PG ADAPTER**



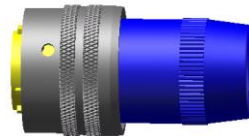
**“G”
HEATSHRINK ADAPTER**



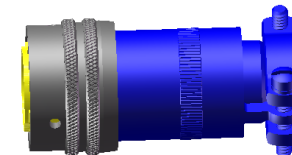
**“SQ”
EMI ADAPTER**



**“W”
CABLE SEAL**



**“J”
CABLE SEAL WITH STRAIN RELIEF**



NOTE

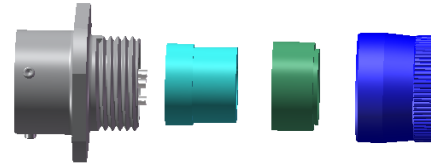
: “E” (=SOLDER) AND “SE” (=CRIMP)
: “P” (=SEOLDER) AND “SP” (=CRIMP)

MIL-DTL-26482 PT/CMB/MS ADAPTER EXPLOSION

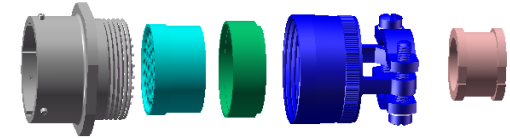
**“A”
ACCESSORIES ADAPTER**



**“E” OR “SE”
OPEN WIRE SEAL ADAPTER**



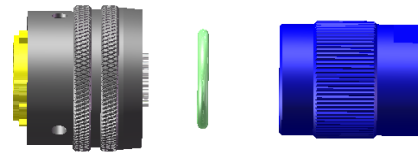
**“E” (SR) OR “SE” (SR) OR “F”
MECHANICAL STRAIN RELIEF**



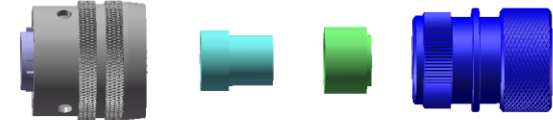
**“P” OR “SP”
POTTING BOOT**



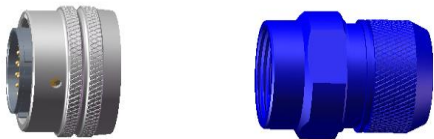
**“PG”
PG ADAPTER**



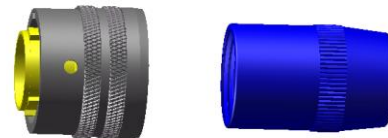
**“G”
HEATSHRINK ADAPTER**



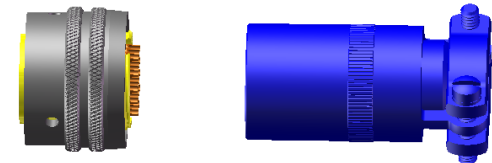
**“SQ”
EMI ADAPTER**



**“W”
CABLE SEAL**



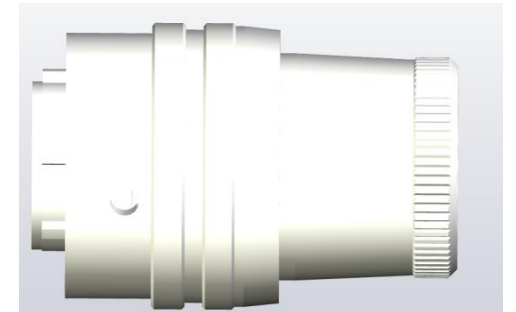
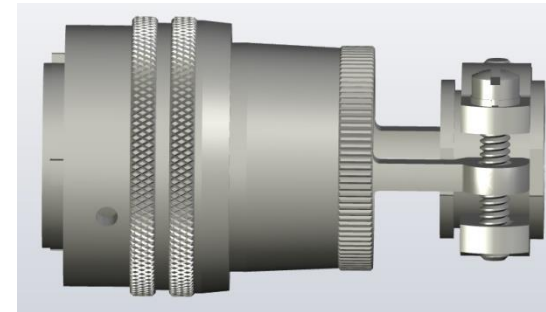
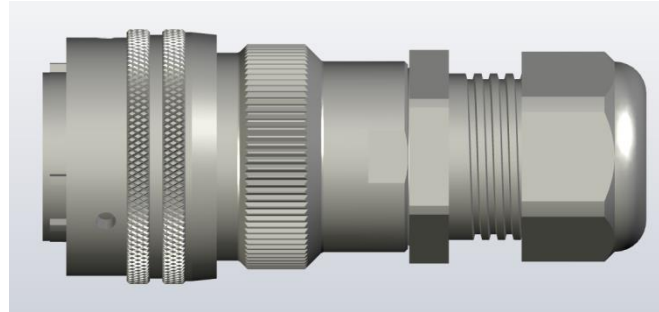
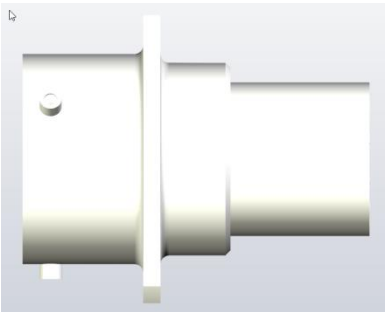
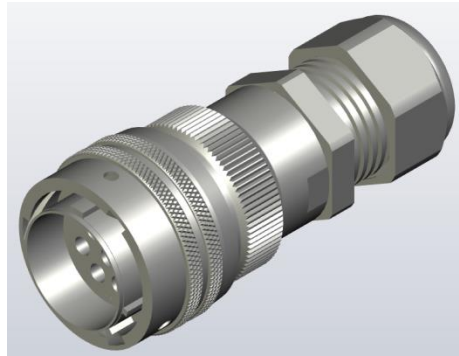
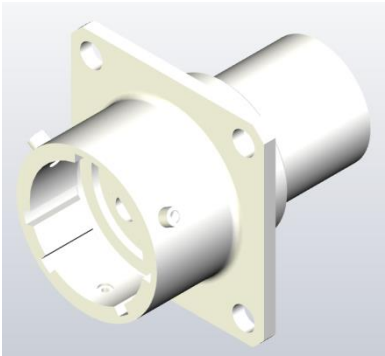
**“J”
CABLE SEAL WITH STRAIN RELIEF**



NOTE

: “E” (=SOLDER) AND “SE” (=CRIMP)
: “P” (=SEOLDER) AND “SP” (=CRIMP)

MIL-DTL-26482 LPT HARDWARE OPTIONS



**“SE”
RECEPTACLE**

**“PG”
PG ADAPTER**

**“SE” (SR)
STRAIN RELIEF**

**“SE”
OPEN WIRE SEAL**

MIL-DTL-26482 PT/CMB SOLDER PARTNUMBERING – PART 1

CMB/PT	<u>06</u>	<u>E</u>	<u>14-19</u>	<u>P</u>	<u>W</u>	<u>(025)</u>
1	2	3	4	5	6	7

- 1. Family type**
 - CMB Commercial Metal Bayonet
 - PT Commercial Amphenol Proprietary
 - PTG Commercial Amphenol Proprietary with grounding fingers

- 2. Shell type**
 - 00 Wall mount receptacle
 - 01 Inline receptacle
 - 02 Panel receptacle front mount
 - 05 Straight plug less back-hardware
 - 06 Straight plug
 - 07 jamnut receptacle
 - 08 Right angle plug

- 3. Connector class**
 - A Adapter for accessory attachment, non-environmental
 - E Adapter, clamp for individual wires, individual wire sealing grommet - pls add type in point 7
 - G Adapter for heat shrink tubing, individual wire sealing grommet
 - J Compression cable seal adapter with extended clamp
 - P Plastic potting adapter
 - W Compression cable seal
 - C PCB contacts when used with suffix (PC1) only for panel or jamnut receptacles

- 4. Shell size and insert arrangement**
 - Please refer to PT series catalog insert options

MIL-DTL-26482 PT/CMB SOLDER PARTNUMBERING – PART 2

CMB/PT	<u>06</u>	<u>E</u>	<u>14-19</u>	<u>P</u>	<u>W</u>	<u>(025)</u>
1	2	3	4	5	6	7

- 5. Contact gender style**
P Designates male pin contacts
S Designates female socket contacts

- 6. Alternate position**
W, X, Y and Z - See PT series catalog
No suffix required for normal (N) position.

- 7. Connector modifications and plating options**
Omit for standard olive drab plating with gold plated contacts
- (024) Green zinc cobalt plating (no common, so we offer pure green zinc plating instead)
 - (025) Black Zinc plating
 - (027) Black Zinc plating - conductive
 - (023) Electroless Nickel plating
 - (072) Grey Zinc Plating
 - (470) Black Zinc plating with strain relief
 - (476) Black Zinc plating – conductive with strain relief
 - (424) Electroless Nickel plating with strain relief
 - (SR) Mechanical strain relief to be used with E connector class
 - (SQ) EMI adapter for heatshrink termination
 - (MXX) Metric internal thread adapter to be used with E connector class
 - (PGXX) PG internal thread adapter to be used with E connector class
 - (PC1) PCB contacts to be used with C class receptacles only

**Consult factory for other variations*

MIL-DTL-26482 PT/CMB PCB MOUNT PARTNUMBERING – PART 1

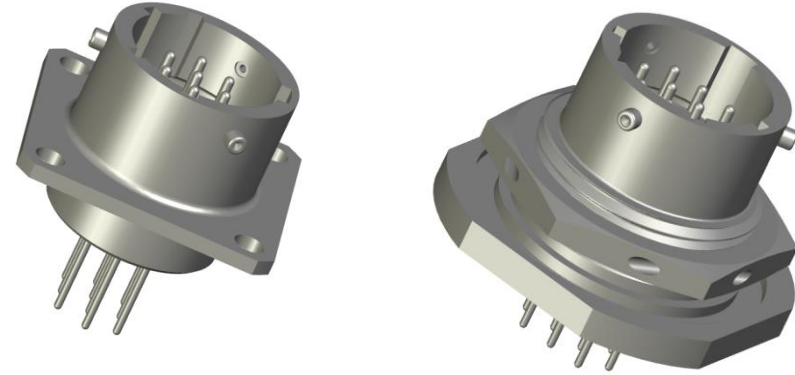
<u>71-</u>	<u>5701</u>	<u>20</u>	<u>-41</u>	<u>P</u>
1	2	3	4	5

- 1. Family type**
 - 58 Black zinc conductive plated square flange receptacle
 - 71 Olive drab cadmium conductive plated square flange receptacle
 - 93 Black zinc cobalt plated square flange receptacle
 - 91 Electroless nickel plated square flange receptacle
 - FL Grey zinc conductive plated square flange receptacle

- 2. Shell type**
 - 5701 PCB termination square flange front mount receptacle
 - 5337 PCB termination jamnut nut rear mount receptacle

- 3. Connector class**
 - 20 Shell size 6
 - 21 Shell size 8
 - 22 Shell size 10
 - 23 Shell size 12
 - 24 Shell size 14
 - 25 Shell size 16
 - 26 Shell size 18
 - 27 Shell size 20
 - 28 Shell size 22
 - 29 Shell size 24

- 4. Insert arrangement**
 - Please refer to PT series catalog insert options



WE CAN ALSO USE CATALOG PN FOR PCB MOUNT:
 FRONT PANEL MOUNT : PT/CMB02C XX-YYP/S (PC1)
 REAR MOUNT JAMNUT : PT/CMB07C XX-YYP/S (PC1)

MIL-DTL-26482 PT/CMB PCB MOUNT PARTNUMBERING – PART 2

<u>71-</u>	<u>5701</u>	<u>20</u>	<u>-41</u>	<u>P</u>
1	2	3	4	5

- 5. Contact gender style**
- P Designates male pin contacts N keyway
 - S Designates female socket contacts N keyway
 - G Designates male pin contacts W keyway
 - H Designates female socket contacts W keyway
 - I Designates male pin contacts X keyway
 - J Designates female socket contacts X keyway
 - K Designates male pin contacts Y keyway
 - L Designates female socket contacts Y keyway
 - M Designates male pin contacts Z keyway
 - N Designates female socket contacts Z keyway

MIL-DTL-26482 PT CRIMP PARTNUMBERING – PART 1

PT	<u>06</u>	<u>SE</u>	<u>14-19</u>	<u>P</u>	<u>W</u>	<u>(025)</u>
1	2	3	4	5	6	7

- 1. Family type**
 - PT Commercial Amphenol Proprietary
 - PTG Commercial Amphenol Proprietary with grounding fingers

- 2. Shell type**
 - 00 Wall mount receptacle
 - 01 Inline receptacle
 - 02 Panel receptacle front mount
 - 05 Straight plug less back-hardware
 - 06 Straight plug
 - 07 Jamnut receptacle
 - 08 Right angle plug

- 3. Connector class**
 - SE Crimp style. Other further options are defined with suffixes
 - SP Crimp style with potting adapter

- 4. Shell size and insert arrangement**

Please refer to PT series catalog insert options.

MIL-DTL-26482 PT CRIMP PARTNUMBERING – PART 2

PT	<u>06</u>	<u>SE</u>	<u>14-19</u>	<u>P</u>	<u>W</u>	<u>(025)</u>
1	2	3	4	5	6	7

5. Contact gender style

P Designates male pin contacts
S Designates female socket contacts

6. Alternate position

W, X, Y and Z - See PT series catalog
No suffix required for normal (N) position.

7. Connector modifications and plating options

Omit for standard olive drab plating with gold plated contacts

(024) Green zinc cobalt plating (no common, so we offer pure green zinc plating instead)

(025) Black Zinc plating

(027) Black Zinc plating - conductive

(023) Electroless Nickel plating

(072) Grey Zinc Plating

(470) Black Zinc plating with strain relief

(476) Black Zinc plating – conductive with strain relief

(424) Electroless Nickel plating with strain relief

(SR) Mechanical strain relief to be used with E connector class

(SQ) EMI adapter for heatshrink termination

(G) Heatshrink adapter

(MXX) Metric internal thread adapter to be used with E connector class

(PGXX) PG internal thread adapter to be used with E connector class

**Consult factory for other variations*

MIL-DTL-26482 MS/QPL PARTNUMBERING – PART 1

MS311	6	<u>E</u>	<u>14-19</u>	<u>P</u>	<u>W</u>
1	2	3	4	5	6

- 1. Family type**
 MS311 Military QPL partnumber solder type (Qualified Product List – DLA)
 MS312 Military QPL partnumber crimp type (Qualified Product List – DLA)

- 2. Shell type**
 0 Wall mount receptacle
 1 Inline receptacle
 2 Panel receptacle front mount
 4 Jamnut receptacle
 6 Straight plug

- 3. Connector class**
 E Environmental sealed with individual sealing grommet
 F Environmental sealed with individual sealing grommet and strain relief
 J Environmental sealed with jacketed sealing grommet and strain relief (solder only)
 P Potting adapter

- 4. Shell size and insert arrangement**
 Please refer to PT series catalog insert options

MIL-DTL-26482 MS/QPL PARTNUMBERING – PART 2

PT	<u>06</u>	<u>SE</u>	<u>14-19</u>	<u>P</u>	<u>W</u>
1	2	3	4	5	6

5. Contact gender style

P Designates male pin contacts

S Designates female socket contacts

6. Alternate position

W, X, Y and Z - See PT series catalog

No suffix required for normal (N) position.

MIL-DTL-26482 LPT PARTNUMBERING – PART 1

LPT	<u>06</u>	<u>SE</u>	<u>14-19</u>	<u>P</u>	<u>W</u>	<u>(025)</u>
1	2	3	4	5	6	7

1. Family type
LPT Commercial Metal Bayonet Crimp (PT-Light)

2. Shell type
 00 Wall mount receptacle
 01 Inline receptacle
 02 Panel receptacle front mount
 05 Straight plug less back-hardware
 06 Straight plug
 07 jamnut receptacle

3. Connector class
 A Adapter to back accessories
 G Heatshrink adapter
 SE (SR) Adapter, clamp for individual wires, individual wire sealing grommet
 PG PG adapter to be completed with cable gland

4. Shell size and insert arrangement
Please refer to LPT insert options

5. Contact gender style
 P Designates male pin contacts
 S Designates female socket contacts

MIL-DTL-26482 LPT PARTNUMBERING – PART 2

<u>LPT</u>	<u>06</u>	<u>SE</u>	<u>14-19</u>	<u>P</u>	<u>W</u>	<u>(025)</u>
1	2	3	4	5	6	7

6. Alternate position

W, X, Y and Z - See PT series catalog
No suffix required for normal (N) position.

7. Connector modifications and plating options

Omit for standard olive drab plating with gold plated contacts

- (025) Black Zinc plating
- (023) Electroless Nickel plating
- (072) Grey Zinc Plating
- (SR) Mechanical strain relief to be used with SE connector class
- (PGXX) PG internal thread adapter to be used with PG connector class
- (EMI) EMI shielded cable gland will be supplied with the assembly
- (LC) Less contacts (contact to be ordered separately on reels)

**Consult factory for other variations*

NOTE: CONTACTS CAN BE ORDERED SEPARATELY AND SUPPLIED ON REELS WHEN STAMPED&FORMED CONTACTS WITH DIFFERENT CRIMP BARRELS CAN BE SUPPLIED

NEW 500H SALT SPRAY GREY ZINC PLATING

FEATURES:

CADMUM FREE

ROHS COMPLIANT

-65°C – +200°C TEMP RANGE

<2.5mΩ CONDUCTIVITY

RATED AT +500H SALT SPRAY

COMPATIBLE WITH MARKET STANDARD PLATING OPTIONS

NON MAGNETIC



GREY ZINC NICKEL PLATING MEETS THE ACCEPTANCE CRITERIA OF THE FOLLOWING STANDARDS:

- **ISO 21207:2004 METHOD B**
- **ASTM B117 (500 H)**
- **ANSI/EIA-364-26B**



NEW HERMETIC RECEPTACLES

FEATURES:

STAINLESS STEEL SHELL

GLASS INSERT – GLASS PEARL DROPS

ROHS COMPLIANT

-65°C – +200°C TEMP RANGE

RATED AT +500H SALT SPRAY

HELIUM LEAKAGE RATE: UP TO 1×10^{-8} CC/SEC @15 PSI (1BAR)

